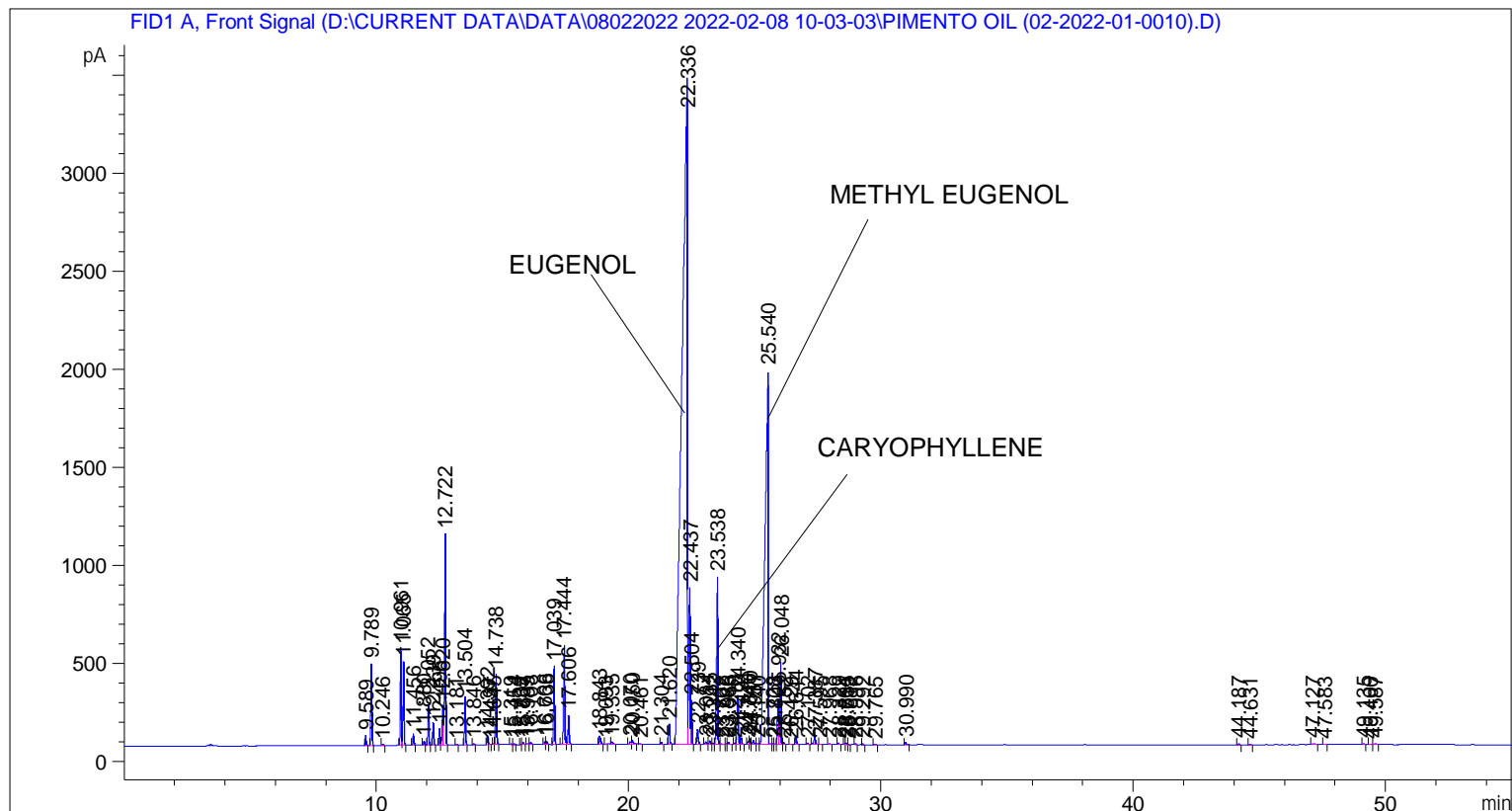


```

=====
Acq. Operator   : SYSTEM                               Seq. Line :    5
Acq. Instrument : BMV_NEW_GC_7820                     Location  : Vial 105
Injection Date  : 08-Feb-22 2:35:35 PM                Inj       :    1
                                                    Inj Volume: 0.5 µl

Acq. Method     : D:\CURRENT DATA\DATA\08022022 2022-02-08 10-03-03\UNIVERSAL BMV.M
Last changed    : 08-Feb-22 10:03:13 AM by SYSTEM
Analysis Method : C:\CHEM32\2\METHODS\COOLING.M
Last changed    : 03-Mar-22 1:20:06 PM by SYSTEM
                  (modified after loading)

Additional Info : Peak(s) manually integrated
  
```



=====
 Area Percent Report
 =====

```

Sorted By      :      Signal
Multiplier     :      1.0000
Dilution       :      1.0000
Do not use Multiplier & Dilution Factor with ISTDs
  
```

Signal 1: FID1 A, Front Signal

Peak #	RetTime [min]	Type	Width [min]	Area [pA*s]	Height [pA]	Area %
1	9.589	BB	0.0430	139.11115	50.70639	0.14824
2	9.789	BB	0.0440	1173.78760	415.45630	1.25085
3	10.246	BB	0.0519	21.22005	6.36233	0.02261
4	10.961	BV	0.0460	1458.84460	501.23349	1.55462
5	11.065	VB	0.0427	1157.83484	426.01761	1.23385
6	11.456	BB	0.0432	159.30627	57.78173	0.16976
7	11.880	BB	0.0420	57.88766	21.11623	0.06169

Peak #	RetTime [min]	Type	Width [min]	Area [pA*s]	Height [pA]	Area %
8	12.052	BB	0.0434	566.10919	203.82208	0.60327
9	12.239	BB	0.0447	328.67380	117.34767	0.35025
10	12.496	BV	0.0461	244.60905	83.56609	0.26067
11	12.620	VV	0.0528	669.24658	201.02997	0.71318
12	12.722	VB	0.0475	3360.26611	1075.16272	3.58087
13	13.181	BB	0.0415	6.81589	2.44737	0.00726
14	13.504	BB	0.0426	673.21252	248.18402	0.71741
15	13.846	BB	0.0474	18.36217	5.72829	0.01957
16	14.392	BV	0.0439	144.53308	51.32790	0.15402
17	14.497	VB	0.0409	5.68647	2.08250	0.00606
18	14.645	BV	0.0382	11.87052	4.91143	0.01265
19	14.738	VB	0.0468	1067.40430	357.40817	1.13748
20	15.319	BB	0.0433	11.59039	4.06151	0.01235
21	15.454	BB	0.0504	13.76300	4.18116	0.01467
22	15.735	BV	0.0410	6.81765	2.64859	0.00727
23	15.807	VB	0.0477	34.46579	10.66890	0.03673
24	15.985	BV	0.0475	14.01306	4.73534	0.01493
25	16.108	VB	0.0510	39.94299	11.64371	0.04257
26	16.666	BV	0.0424	41.59487	14.99429	0.04433
27	16.738	VB	0.0481	53.33810	16.75519	0.05684
28	17.039	BB	0.0468	1191.40527	399.29938	1.26962
29	17.444	BV	0.0488	1681.20947	505.72598	1.79158
30	17.606	VB	0.0464	447.26053	147.28546	0.47662
31	18.843	BB	0.0591	173.90804	43.05465	0.18533
32	19.093	BB	0.0404	4.96713	1.84336	0.00529
33	19.335	BB	0.0686	68.10822	14.03182	0.07258
34	20.070	BV	0.0500	43.88913	13.46834	0.04677
35	20.150	VB	0.0745	92.54443	17.27363	0.09862
36	20.461	BB	0.0487	9.78216	3.02344	0.01042
37	21.304	BB	0.0450	36.76457	12.61193	0.03918
38	21.620	BB	0.0478	311.22681	101.42577	0.33166
39	22.336	BV	0.1767	4.99952e4	3397.20898	53.27739
40	22.437	VV	0.0592	3095.56934	798.90228	3.29879
41	22.504	VB	0.0386	551.68933	224.99200	0.58791
42	22.739	BB	0.0537	273.07474	76.34534	0.29100
43	23.084	BV	0.0602	60.26679	13.73041	0.06422
44	23.235	VV	0.0515	64.60947	18.18277	0.06885
45	23.342	VV	0.0579	24.86854	6.76435	0.02650
46	23.538	VB	0.0534	3105.92725	854.46722	3.30983
47	23.702	BB	0.0616	17.91805	4.21703	0.01909
48	23.886	BV	0.0458	7.43819	2.64291	0.00793
49	23.963	VB	0.0564	40.16317	10.79704	0.04280
50	24.210	BV	0.0501	26.41487	8.08082	0.02815
51	24.340	VV	0.0666	1026.98413	251.67693	1.09441
52	24.491	VB	0.0477	105.10156	33.43200	0.11200
53	24.746	BV	0.0422	42.34927	15.34920	0.04513
54	24.810	VV	0.0490	93.60884	29.49392	0.09975
55	24.957	VV	0.0583	82.35801	20.31524	0.08776
56	25.140	VV	0.0745	31.27311	5.65674	0.03333
57	25.540	VV	0.1058	1.66466e4	1907.29443	17.73949
58	25.728	VV	0.0490	12.10237	3.71327	0.01290
59	25.803	VV	0.0526	9.09776	2.61590	0.00970
60	25.932	VV	0.0509	757.97443	227.05937	0.80774
61	26.048	VV	0.0542	1544.15967	417.28485	1.64553

Peak #	RetTime [min]	Type	Width [min]	Area [pA*s]	Height [pA]	Area %
62	26.152	VB	0.0465	33.26679	10.92391	0.03545
63	26.429	BB	0.0488	7.98063	2.52824	0.00850
64	26.644	BB	0.0520	122.84714	34.95239	0.13091
65	27.102	BB	0.0464	17.79971	6.04540	0.01897
66	27.387	BB	0.0611	183.04390	44.43863	0.19506
67	27.595	BB	0.0558	10.01630	2.66966	0.01067
68	27.968	BB	0.0496	16.42169	5.23964	0.01750
69	28.329	BB	0.0443	20.47051	7.62362	0.02181
70	28.561	BV	0.0453	13.83067	4.84852	0.01474
71	28.635	VV	0.0487	29.66079	8.94511	0.03161
72	28.719	VB	0.0452	7.46560	2.54998	0.00796
73	28.996	BB	0.0467	19.69075	6.43363	0.02098
74	29.292	BB	0.0492	15.54207	4.87134	0.01656
75	29.765	BB	0.0617	16.88606	3.96547	0.01799
76	30.990	BB	0.0669	57.62285	12.71694	0.06141
77	44.187	BB	0.0545	18.64000	5.11336	0.01986
78	44.631	BB	0.0560	12.56588	3.40739	0.01339
79	47.127	BB	0.0847	23.37282	3.65165	0.02491
80	47.583	BB	0.0588	9.31570	2.47879	0.00993
81	49.135	BB	0.0605	13.60035	3.20689	0.01449
82	49.400	BB	0.0607	9.14589	2.33335	0.00975
83	49.587	BB	0.0811	24.08068	4.06341	0.02566

Totals : 9.38394e4 1.36737e4

=====
*** End of Report ***