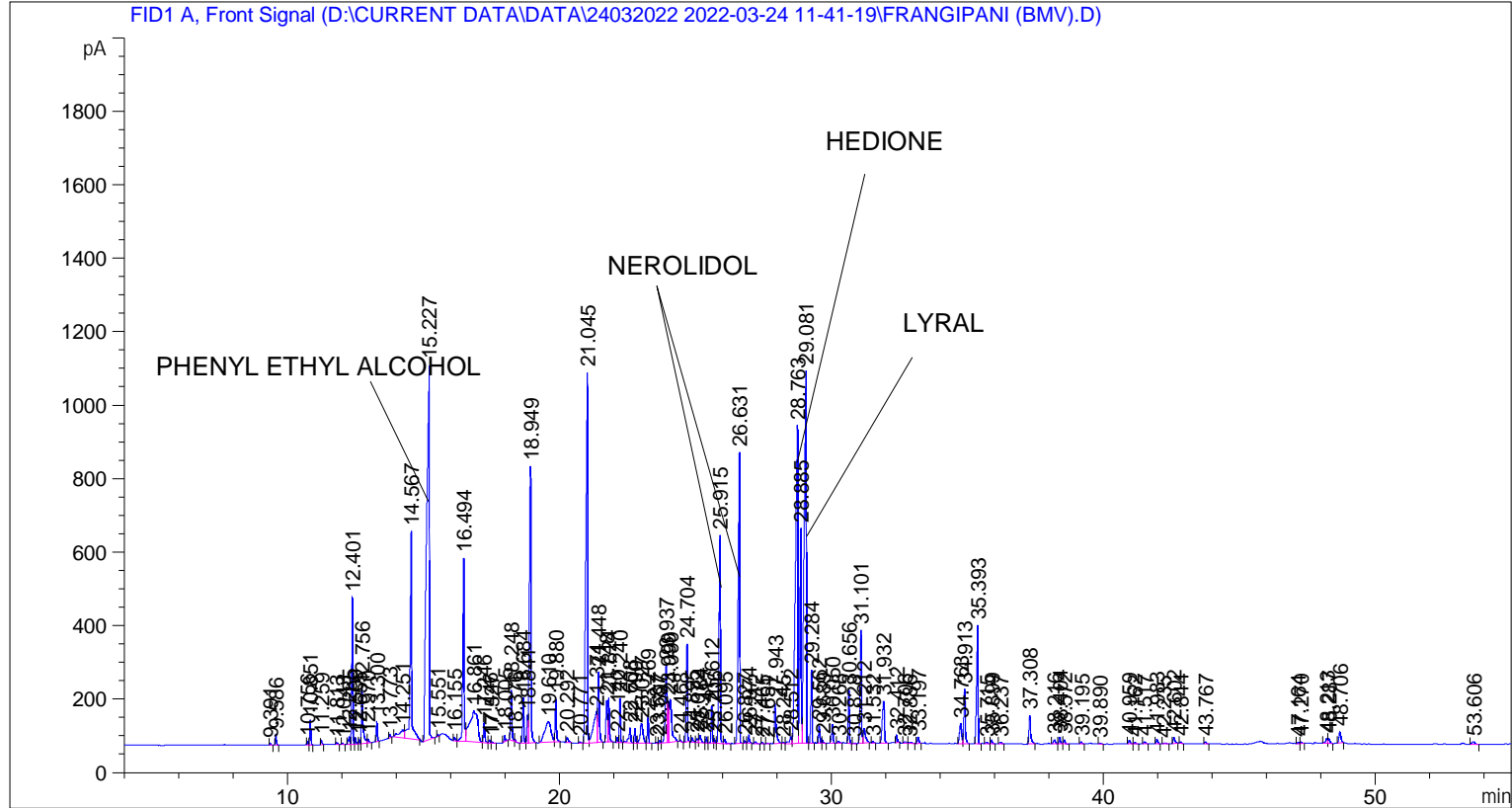


```

=====
Acq. Operator   : SYSTEM                               Seq. Line :    1
Acq. Instrument : BMV_NEW_GC_7820                     Location  : Vial 101
Injection Date  : 24-Mar-22 11:51:04 AM                Inj       :    1
                                                    Inj Volume: 0.5 µl

Acq. Method     : D:\CURRENT DATA\DATA\24032022 2022-03-24 11-41-19\UNIVERSAL BMV.M
Last changed    : 24-Mar-22 11:41:30 AM by SYSTEM
Analysis Method : C:\CHEM32\2\METHODS\UNIVERSAL BMV.M
Last changed    : 24-Mar-22 3:36:42 PM by SYSTEM
                (modified after loading)

Additional Info : Peak(s) manually integrated
  
```



=====
 Area Percent Report
 =====

```

Sorted By      :      Signal
Multiplier     :      1.0000
Dilution       :      1.0000
Do not use Multiplier & Dilution Factor with ISTDs
  
```

Signal 1: FID1 A, Front Signal

Peak #	RetTime [min]	Type	Width [min]	Area [pA*s]	Height [pA]	Area %
1	9.391	BB	0.0421	14.86067	5.57802	0.02483
2	9.586	BB	0.0453	84.19923	29.52463	0.14066
3	10.756	BV	0.0423	27.58132	9.95586	0.04608
4	10.851	VB	0.0444	193.00003	67.50288	0.32241
5	11.259	BB	0.0450	35.24099	12.09351	0.05887
6	11.813	BB	0.0615	25.57772	5.68383	0.04273
7	12.043	BB	0.0411	11.31731	4.25058	0.01891

Sample Name: FRANGIPANI (BMV)

Peak #	RetTime [min]	Type	Width [min]	Area [pA*s]	Height [pA]	Area %
8	12.285	BV	0.0565	83.54484	20.95134	0.13956
9	12.401	VV	0.0432	1101.66492	399.17392	1.84035
10	12.509	VB	0.0472	56.89455	18.85450	0.09504
11	12.655	BV	0.0404	30.12159	11.54587	0.05032
12	12.756	VV	0.0571	584.32385	147.91624	0.97612
13	12.970	VB	0.0615	42.80282	10.30422	0.07150
14	13.300	BB	0.0434	155.84221	56.10764	0.26034
15	13.773	BB	0.0462	26.93672	8.92930	0.04500
16	14.251	BV	0.1564	274.74164	22.19319	0.45896
17	14.567	VB	0.0631	2474.96802	565.22192	4.13448
18	15.227	BB	0.0874	7124.31348	1021.03778	11.90129
19	15.551	BV	0.0484	18.75412	5.69513	0.03133
20	16.155	BV	0.0524	35.92668	10.11331	0.06002
21	16.494	VV	0.0534	1729.05713	498.88855	2.88842
22	16.861	VV	0.2581	1780.09949	84.74593	2.97369
23	17.246	VV	0.0493	183.36217	55.84975	0.30631
24	17.446	VV	0.0474	23.53117	7.33681	0.03931
25	17.527	VB	0.0589	16.00088	3.89325	0.02673
26	18.005	BB	0.0453	48.00499	16.31797	0.08019
27	18.248	BV	0.0597	525.87854	137.31775	0.87849
28	18.376	VB	0.0447	17.59831	6.08947	0.02940
29	18.684	BV	0.0462	361.30930	123.20213	0.60357
30	18.841	VV	0.0393	187.19022	74.47744	0.31270
31	18.949	VB	0.0688	3273.91846	752.56616	5.46914
32	19.610	BV	0.1901	881.41083	55.56085	1.47241
33	19.880	VB	0.0506	397.02344	119.99379	0.66323
34	20.292	BB	0.0688	70.47503	14.74188	0.11773
35	20.771	BB	0.0677	15.27390	3.38389	0.02552
36	21.045	BV	0.0629	4831.73193	1008.22272	8.07149
37	21.374	VV	0.1153	762.91406	83.74476	1.27446
38	21.448	VB	0.0562	756.05560	191.12981	1.26300
39	21.748	BV	0.0509	374.62979	112.37132	0.62583
40	21.824	VB	0.0529	422.66849	120.51677	0.70608
41	22.140	BV	0.0446	39.74205	14.22225	0.06639
42	22.240	VB	0.0436	338.98843	121.29448	0.56629
43	22.608	BV	0.0717	202.06430	40.15019	0.33755
44	22.790	VV	0.0494	124.92123	38.93631	0.20868
45	23.027	VV	0.0974	388.56473	53.06979	0.64910
46	23.269	VB	0.0450	211.95151	72.75932	0.35407
47	23.587	BV	0.0440	8.69310	2.98346	0.01452
48	23.697	VV	0.0479	25.05173	8.14016	0.04185
49	23.937	VV	0.0595	857.31873	210.40550	1.43217
50	23.999	VV	0.0462	361.89203	113.40391	0.60455
51	24.090	VB	0.0942	804.10291	115.60200	1.34327
52	24.468	BB	0.0433	10.92334	4.07015	0.01825
53	24.704	BB	0.0472	806.00861	266.88174	1.34645
54	24.895	BV	0.0572	48.62294	12.55452	0.08123
55	25.072	VV	0.0657	52.58693	11.21299	0.08785
56	25.184	VV	0.0674	97.23362	20.47083	0.16243
57	25.417	VV	0.0474	51.46131	16.51104	0.08597
58	25.612	VV	0.0466	309.60928	101.59985	0.51721
59	25.706	VV	0.0452	37.76382	13.28065	0.06309
60	25.915	VV	0.0558	2082.62085	567.44629	3.47905
61	26.095	VB	0.0695	58.38125	12.05862	0.09753

Sample Name: FRANGIPANI (BMV)

Peak #	RetTime [min]	Type	Width [min]	Area [pA*s]	Height [pA]	Area %
62	26.631	BB	0.0591	3195.77759	792.21710	5.33860
63	26.827	BV	0.0446	22.94613	7.97186	0.03833
64	26.974	VB	0.0550	87.31569	23.69338	0.14586
65	27.212	BB	0.0707	25.81001	5.50864	0.04312
66	27.465	BB	0.0487	8.71972	2.77472	0.01457
67	27.651	BB	0.0419	4.26855	1.72046	0.00713
68	27.943	BB	0.0627	491.16830	108.70164	0.82051
69	28.245	BV	0.0485	8.71664	2.94393	0.01456
70	28.512	VV	0.0748	94.65911	17.29919	0.15813
71	28.763	VV	0.0815	5297.58301	864.64093	8.84971
72	28.885	VV	0.0506	2089.63159	585.37994	3.49077
73	29.081	VV	0.0721	5581.89600	1016.43719	9.32466
74	29.284	VB	0.0447	591.40778	198.88304	0.98796
75	29.562	BV	0.0583	168.75229	46.49152	0.28190
76	29.689	VB	0.0460	23.20037	7.95889	0.03876
77	30.050	BB	0.0525	182.47794	51.33915	0.30483
78	30.268	BB	0.0694	26.60576	5.49894	0.04445
79	30.656	BB	0.0477	444.35483	145.08145	0.74230
80	30.828	BB	0.0514	6.90670	2.21620	0.01154
81	31.101	BV	0.0498	1050.88086	307.86758	1.75551
82	31.212	VB	0.0805	238.88759	38.95753	0.39907
83	31.532	BB	0.0504	16.03358	4.62818	0.02678
84	31.932	BB	0.0777	620.35907	113.59962	1.03632
85	32.412	BB	0.0503	63.55991	19.90024	0.10618
86	32.706	BB	0.0874	30.84912	4.97034	0.05153
87	32.886	BB	0.1019	24.44882	3.13853	0.04084
88	33.197	BB	0.0593	69.59194	18.32738	0.11625
89	34.763	BV	0.0837	293.50687	55.46892	0.49031
90	34.913	VB	0.0579	560.01837	148.92935	0.93552
91	35.393	BB	0.0532	1270.71570	321.11768	2.12275
92	35.715	BV	0.0763	19.56434	3.72130	0.03268
93	35.899	VB	0.0581	38.44200	10.16524	0.06422
94	36.237	BB	0.0717	23.09011	4.29430	0.03857
95	37.308	BB	0.0620	331.87015	77.44448	0.55439
96	38.216	BV	0.0794	62.10989	11.61894	0.10376
97	38.404	VV	0.0613	75.82929	18.70595	0.12667
98	38.572	VB	0.0668	45.31124	10.39933	0.07569
99	39.195	BB	0.0595	23.84085	5.86127	0.03983
100	39.890	BB	0.0598	12.65749	2.84970	0.02114
101	40.959	BB	0.0686	46.60386	9.95578	0.07785
102	41.162	BB	0.0682	20.42917	4.65701	0.03413
103	41.517	BB	0.0711	27.72340	5.76409	0.04631
104	41.983	BB	0.0630	56.42181	13.43832	0.09425
105	42.235	BB	0.0852	17.13628	2.49192	0.02863
106	42.602	BB	0.0644	82.95277	16.29067	0.13857
107	42.844	BB	0.0586	16.27419	3.99208	0.02719
108	43.767	BB	0.0634	23.91425	5.12710	0.03995
109	47.164	BV	0.0552	13.22377	3.57016	0.02209
110	47.270	VB	0.0555	15.38574	3.78015	0.02570
111	48.213	BV	0.0658	62.02761	12.97628	0.10362
112	48.287	VB	0.0681	63.35102	12.30414	0.10583
113	48.706	BB	0.0747	154.73785	30.76051	0.25849
114	53.606	BB	0.0932	58.48994	8.01014	0.09771

Sample Name: FRANGIPANI (BMV)

Totals : 5.98617e4 1.29219e4

=====

*** End of Report ***