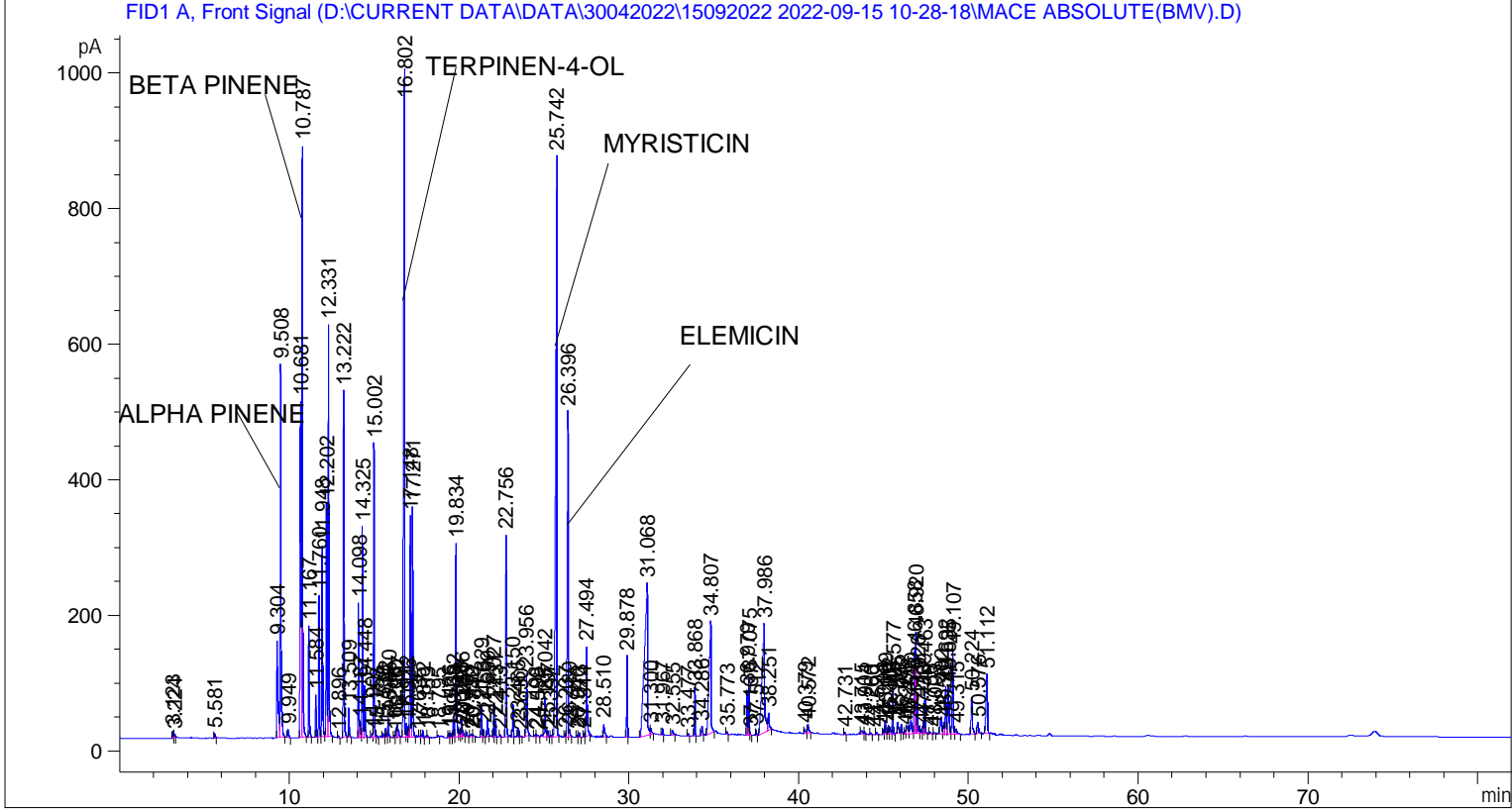


```
=====
Acq. Operator   : SYSTEM                               Seq. Line :    2
Acq. Instrument : BMV_NEW_GC_7820                     Location  : Vial 102
Injection Date  : 15-Sep-22 12:10:31 PM              Inj       :    1
                                                    Inj Volume: 0.5 µl

Acq. Method    : D:\CURRENT DATA\DATA\30042022\15092022 2022-09-15 10-28-18\UNIVERSAL BMV.M
Last changed   : 15-Sep-22 10:28:19 AM by SYSTEM
Analysis Method: C:\CHEM32\2\METHODS\UNIVERSAL BMV.M
Last changed   : 15-Sep-22 10:25:41 AM by SYSTEM
=====
```



=====  
 Area Percent Report  
 =====

```
Sorted By      : Signal
Multiplier     : 1.0000
Dilution       : 1.0000
Do not use Multiplier & Dilution Factor with ISTDs
```

Signal 1: FID1 A, Front Signal

Peak #	RetTime [min]	Type	Width [min]	Area [pA*s]	Height [pA]	Area %
1	3.123	BV	0.0381	28.05530	10.18598	0.05782
2	3.224	VB	0.0531	20.58972	5.45227	0.04243
3	5.581	BB	0.0536	24.86782	6.64987	0.05125
4	9.304	BV	0.0673	688.12762	142.59763	1.41818
5	9.508	VB	0.0552	1990.57629	550.19843	4.10243
6	9.949	BB	0.0602	49.46395	11.97233	0.10194
7	10.681	BV	0.0597	1860.01306	496.12613	3.83334
8	10.787	VB	0.0510	2992.83911	872.03442	6.16801
9	11.167	BB	0.0489	531.80310	163.88994	1.09601

Sample Name: MACE ABSOLUTE(BMV)

Peak #	RetTime [min]	Type	Width [min]	Area [pA*s]	Height [pA]	Area %
10	11.584	BV	0.0500	203.29317	62.35134	0.41897
11	11.760	VV	0.0505	671.24615	208.82538	1.38339
12	11.948	VB	0.0512	946.05115	281.88272	1.94974
13	12.202	BV	0.0507	1111.42712	343.75433	2.29057
14	12.331	VB	0.0539	2131.23804	607.21417	4.39232
15	12.896	BB	0.0457	8.69329	2.91944	0.01792
16	13.222	BB	0.0491	1625.49817	511.07596	3.35003
17	13.509	BB	0.0493	145.08310	43.03002	0.29901
18	14.098	BV	0.0467	607.49353	198.57004	1.25200
19	14.187	VV	0.0516	79.69236	22.32348	0.16424
20	14.325	VV	0.0476	948.57794	311.17459	1.95495
21	14.448	VB	0.0613	307.84045	75.95528	0.63444
22	14.907	BV	0.0537	25.07159	6.68932	0.05167
23	15.002	VV	0.0479	1336.76855	434.54230	2.75498
24	15.158	VB	0.0618	15.40168	3.68358	0.03174
25	15.538	BV	0.0571	23.82421	6.59927	0.04910
26	15.682	VB	0.0527	45.36589	12.99505	0.09350
27	15.850	BB	0.0533	99.17007	28.73586	0.20438
28	16.206	BV	0.0484	9.42269	3.10637	0.01942
29	16.330	VV	0.0526	54.47139	15.26015	0.11226
30	16.397	VB	0.0632	93.65646	20.14321	0.19302
31	16.802	BV	0.0618	4280.98389	983.36469	8.82278
32	16.912	VV	0.0472	62.48648	20.11254	0.12878
33	17.026	VV	0.0565	59.17673	15.88328	0.12196
34	17.148	VV	0.0497	1054.63623	326.15143	2.17352
35	17.271	VB	0.0477	1068.57678	339.46747	2.20225
36	17.636	BB	0.0501	8.91762	2.88476	0.01838
37	17.872	BB	0.0538	42.51754	11.85360	0.08763
38	18.159	BB	0.0565	16.16002	4.24120	0.03330
39	18.795	BV	0.0653	13.15200	3.24403	0.02711
40	19.406	BV	0.0600	27.32792	7.08466	0.05632
41	19.535	VV	0.0676	25.49746	6.12421	0.05255
42	19.682	VV	0.0495	75.13024	23.38893	0.15484
43	19.834	VB	0.0518	997.76135	285.43356	2.05631
44	20.043	BV	0.0608	44.69815	10.67565	0.09212
45	20.166	VV	0.0516	85.55797	25.22559	0.17633
46	20.251	VB	0.0520	30.79741	8.97635	0.06347
47	20.463	BB	0.0505	21.34689	6.46698	0.04399
48	20.732	BV	0.0734	22.79070	4.19179	0.04697
49	20.840	VB	0.0537	10.08732	2.75656	0.02079
50	21.329	BV	0.0572	168.54791	46.57923	0.34736
51	21.456	VB	0.0476	38.40226	12.23037	0.07914
52	21.659	BB	0.0572	108.09349	27.89117	0.22277
53	22.027	BV	0.0466	148.23038	50.01104	0.30549
54	22.131	VB	0.0457	70.35625	23.63369	0.14500
55	22.413	BB	0.0494	10.59372	3.22131	0.02183
56	22.756	BB	0.0500	969.28973	297.40744	1.99763
57	23.150	BB	0.0462	144.13979	47.81024	0.29706
58	23.465	BB	0.0477	40.03564	13.85836	0.08251
59	23.630	BB	0.0449	4.62424	1.59362	0.00953
60	23.956	BB	0.0613	391.97794	92.84185	0.80784
61	24.498	BV	0.0658	19.97665	4.41062	0.04117
62	24.599	VB	0.0643	11.64549	2.45729	0.02400
63	25.042	BV	0.0573	234.13512	59.02429	0.48253

Sample Name: MACE ABSOLUTE(BMV)

Peak #	RetTime [min]	Type	Width [min]	Area [pA*s]	Height [pA]	Area %
64	25.197	VB	0.0553	38.29698	10.30695	0.07893
65	25.397	BB	0.0430	7.39831	2.61502	0.01525
66	25.742	BB	0.0700	4696.97607	856.48059	9.68011
67	26.237	BV	0.0457	16.23200	5.61221	0.03345
68	26.396	VV	0.0527	1838.31982	480.13712	3.78864
69	26.489	VB	0.0715	55.60385	10.89877	0.11460
70	26.946	BV	0.0519	12.97569	3.89118	0.02674
71	27.073	VB	0.0539	24.24084	6.91007	0.04996
72	27.344	BV	0.0461	16.72005	5.55547	0.03446
73	27.494	VB	0.0596	529.16687	132.39400	1.09057
74	28.510	BB	0.0688	95.43707	18.93852	0.19669
75	29.878	BB	0.0475	376.19766	120.26117	0.77531
76	31.068	BV	0.1498	2745.90918	224.40883	5.65911
77	31.300	VB	0.0617	38.61984	8.71345	0.07959
78	31.967	BB	0.0488	30.26197	9.34677	0.06237
79	32.555	BB	0.0770	38.66605	7.28088	0.07969
80	33.477	BB	0.0511	12.76829	3.90791	0.02631
81	33.868	BB	0.0474	223.73923	71.77026	0.46111
82	34.286	BB	0.0652	52.92962	12.55619	0.10908
83	34.807	BB	0.1000	1321.43274	165.73555	2.72337
84	35.773	BB	0.0531	14.73992	4.17959	0.03038
85	36.979	BV	0.0455	200.90256	65.95620	0.41404
86	37.075	VV	0.0509	282.43326	86.91631	0.58207
87	37.167	VB	0.0443	11.95312	3.95317	0.02463
88	37.512	BB	0.0481	24.56684	7.94439	0.05063
89	37.986	BV	0.1388	1758.90881	160.57220	3.62498
90	38.251	VB	0.0726	130.02234	25.05071	0.26797
91	40.379	BV	0.0811	38.37313	6.38481	0.07908
92	40.572	VB	0.0730	66.26624	12.47380	0.13657
93	42.731	BB	0.0480	11.89918	3.65589	0.02452
94	43.715	BV	0.0869	27.33121	4.25836	0.05633
95	43.904	VB	0.0505	12.94605	3.82135	0.02668
96	44.260	BB	0.0567	10.67748	2.60892	0.02201
97	44.599	BB	0.0528	12.51762	3.86215	0.02580
98	45.008	BV	0.0540	24.32204	7.08694	0.05013
99	45.109	VB	0.0493	65.99322	20.09661	0.13601
100	45.302	BV	0.0509	44.15279	13.24588	0.09100
101	45.401	VV	0.0675	48.51741	10.39030	0.09999
102	45.577	VB	0.0498	215.17989	66.40857	0.44347
103	45.845	BB	0.0779	99.36270	17.08152	0.20478
104	46.072	BB	0.0589	55.06453	13.99335	0.11348
105	46.286	BV	0.0523	19.54766	4.92632	0.04029
106	46.438	VV	0.0945	83.52798	12.10917	0.17214
107	46.640	VV	0.0862	126.14571	19.58114	0.25998
108	46.858	VV	0.0492	485.43265	125.28639	1.00044
109	46.920	VV	0.0477	480.96762	148.84785	0.99124
110	47.026	VV	0.0655	203.37469	45.20138	0.41914
111	47.213	VV	0.0644	27.81510	6.56336	0.05732
112	47.359	VV	0.0550	66.46524	18.47295	0.13698
113	47.463	VB	0.0546	252.22179	69.11364	0.51981
114	47.758	BB	0.0625	15.89854	3.74814	0.03277
115	48.003	BB	0.0294	2.92458	1.59477	0.00603
116	48.402	BV	0.0771	157.16483	25.08063	0.32390
117	48.561	VV	0.0653	70.43286	16.33792	0.14516

Peak #	RetTime [min]	Type	Width [min]	Area [pA*s]	Height [pA]	Area %
118	48.692	VV	0.0627	314.99591	69.73711	0.64918
119	48.835	VV	0.0736	381.05612	69.88505	0.78533
120	49.107	VV	0.0697	583.78271	124.62475	1.20313
121	49.315	VB	0.1000	56.69096	7.43098	0.11684
122	50.224	BB	0.0740	288.97162	54.34834	0.59555
123	50.576	BB	0.0723	84.35278	15.54651	0.17384
124	51.112	BB	0.0786	508.87125	87.84171	1.04874

Totals :                                   4.85219e4  1.18544e4

=====  
\*\*\* End of Report \*\*\*