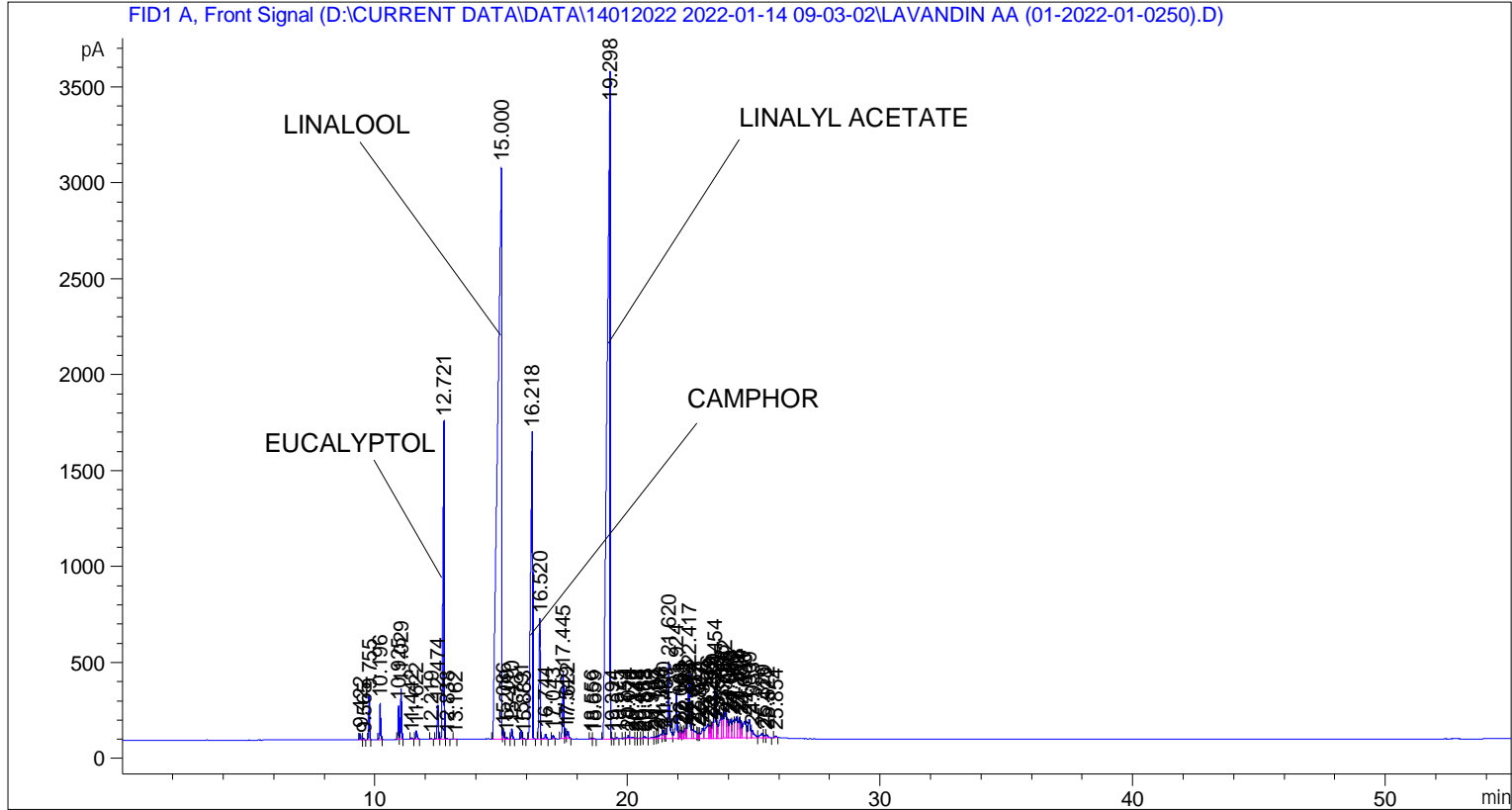


```

=====
Acq. Operator   : SYSTEM                               Seq. Line :    1
Acq. Instrument : BMV_NEW_GC_7820                     Location  : Vial 101
Injection Date  : 14-Jan-22 9:13:15 AM                Inj       :    1
                                                    Inj Volume: 0.5 µl

Acq. Method     : D:\CURRENT DATA\DATA\14012022 2022-01-14 09-03-02\UNIVERSAL BMV.M
Last changed    : 14-Jan-22 9:03:02 AM by SYSTEM
Analysis Method : C:\CHEM32\2\METHODS\COOLING.M
Last changed    : 02-Mar-22 3:24:07 PM by SYSTEM
                (modified after loading)
  
```



=====
 Area Percent Report
 =====

```

Sorted By      :      Signal
Multiplier     :      1.0000
Dilution      :      1.0000
Do not use Multiplier & Dilution Factor with ISTDs
  
```

Signal 1: FID1 A, Front Signal

Peak #	RetTime [min]	Type	Width [min]	Area [pA*s]	Height [pA]	Area %
1	9.422	BB	0.0422	87.27899	32.63301	0.08762
2	9.565	BB	0.0411	15.37253	5.95070	0.01543
3	9.755	BB	0.0418	603.18811	228.83978	0.60557
4	10.196	BB	0.0426	534.27313	191.24655	0.53638
5	10.925	BV	0.0420	466.09528	175.48141	0.46794
6	11.029	VB	0.0428	720.79767	264.48141	0.72365
7	11.442	BB	0.0449	27.11924	9.33999	0.02723
8	11.622	BB	0.0533	165.86493	44.64707	0.16652

Peak #	RetTime [min]	Type	Width [min]	Area [pA*s]	Height [pA]	Area %
9	12.219	BB	0.0466	16.41410	5.52829	0.01648
10	12.474	BV	0.0542	611.27905	177.27060	0.61370
11	12.721	VV	0.0513	6136.19922	1653.21716	6.16045
12	12.838	VB	0.0547	18.02024	4.92845	0.01809
13	13.162	BB	0.0489	7.59470	2.33841	0.00762
14	15.000	BV	0.1302	3.17115e4	2979.86890	31.83685
15	15.086	VV	0.0440	139.40894	46.40894	0.13996
16	15.209	VB	0.0498	36.93721	10.55451	0.03708
17	15.410	BB	0.0551	190.11720	53.94519	0.19087
18	15.791	BV	0.0438	128.76218	45.84361	0.12927
19	15.883	VB	0.0462	9.97736	3.40076	0.01002
20	16.218	BB	0.0688	8046.71143	1597.28857	8.07852
21	16.520	BV	0.0513	2061.76904	627.42590	2.06992
22	16.744	VB	0.0606	115.33995	27.14359	0.11580
23	17.043	BB	0.0457	54.89865	18.99739	0.05512
24	17.445	BV	0.0630	1325.71973	343.89703	1.33096
25	17.549	VV	0.0420	64.70396	22.85775	0.06496
26	17.622	VB	0.0703	187.69310	41.05237	0.18843
27	18.556	BV	0.0553	21.56978	6.25145	0.02166
28	18.659	VB	0.0561	10.00158	2.76972	0.01004
29	19.298	BV	0.1023	2.88407e4	3456.52832	28.95474
30	19.394	VB	0.0480	18.72269	5.46222	0.01880
31	19.575	BB	0.0439	26.50900	9.40660	0.02661
32	19.854	BV	0.0439	18.34407	6.70878	0.01842
33	20.014	VV	0.0591	71.85520	17.07458	0.07214
34	20.176	VV	0.0952	59.06254	7.99636	0.05930
35	20.348	VV	0.0616	15.29662	3.91438	0.01536
36	20.444	VV	0.0647	15.78366	2.98444	0.01585
37	20.585	VV	0.0538	22.23210	6.20513	0.02232
38	20.668	VV	0.0895	63.33016	9.65923	0.06358
39	20.945	VV	0.1022	67.83143	8.68055	0.06810
40	21.107	VV	0.0584	50.36648	12.66996	0.05057
41	21.182	VV	0.0500	52.47808	14.91861	0.05269
42	21.326	VV	0.0845	157.52431	24.65786	0.15815
43	21.410	VV	0.0605	187.66151	45.12772	0.18840
44	21.487	VV	0.0411	65.12964	21.63613	0.06539
45	21.620	VV	0.0619	1739.45190	398.68546	1.74633
46	21.924	VV	0.0596	997.58868	239.27544	1.00153
47	22.063	VV	0.0550	168.30228	41.80601	0.16897
48	22.104	VV	0.0494	134.91524	41.01829	0.13545
49	22.192	VV	0.0537	146.37181	39.11943	0.14695
50	22.282	VV	0.0525	194.99725	54.83320	0.19577
51	22.313	VV	0.0400	147.50082	55.42828	0.14808
52	22.417	VV	0.0642	1562.59912	349.36765	1.56878
53	22.574	VV	0.0633	210.69922	46.99141	0.21153
54	22.652	VV	0.0782	236.44218	39.30404	0.23738
55	22.761	VV	0.0471	91.29668	27.96833	0.09166
56	22.827	VV	0.0492	93.89890	27.25117	0.09427
57	22.958	VV	0.0948	372.55777	52.47079	0.37403
58	23.176	VV	0.1049	658.31403	76.15028	0.66092
59	23.249	VV	0.0493	233.14461	69.22054	0.23407
60	23.292	VV	0.0414	185.82968	64.82333	0.18656
61	23.380	VV	0.0529	299.68558	85.52750	0.30087
62	23.454	VV	0.0621	1137.54956	264.65771	1.14205

Peak #	RetTime [min]	Type	Width [min]	Area [pA*s]	Height [pA]	Area %
63	23.540	VV	0.0403	229.60480	73.79235	0.23051
64	23.695	VV	0.0867	890.27911	132.04584	0.89380
65	23.762	VV	0.0419	347.93329	107.11848	0.34931
66	23.862	VV	0.0891	980.29718	158.52927	0.98417
67	23.943	VV	0.0509	412.00845	104.79877	0.41364
68	24.060	VV	0.0770	619.09595	98.91084	0.62154
69	24.176	VV	0.0742	522.33777	94.97497	0.52440
70	24.298	VV	0.0913	792.15204	109.64044	0.79528
71	24.414	VV	0.0634	506.01929	108.55209	0.50802
72	24.484	VV	0.0563	344.88098	90.83551	0.34624
73	24.638	VV	0.1202	849.57617	88.32584	0.85293
74	24.809	VV	0.0954	611.04480	95.77088	0.61346
75	24.933	VV	0.0891	261.93112	38.62434	0.26297
76	25.320	VV	0.0991	193.65280	26.54663	0.19442
77	25.418	VV	0.0696	69.16121	14.00816	0.06943
78	25.522	VB	0.0738	82.59021	15.59543	0.08292
79	25.854	BB	0.0572	35.09766	8.00076	0.03524

Totals : 9.96063e4 1.56172e4

=====
*** End of Report ***