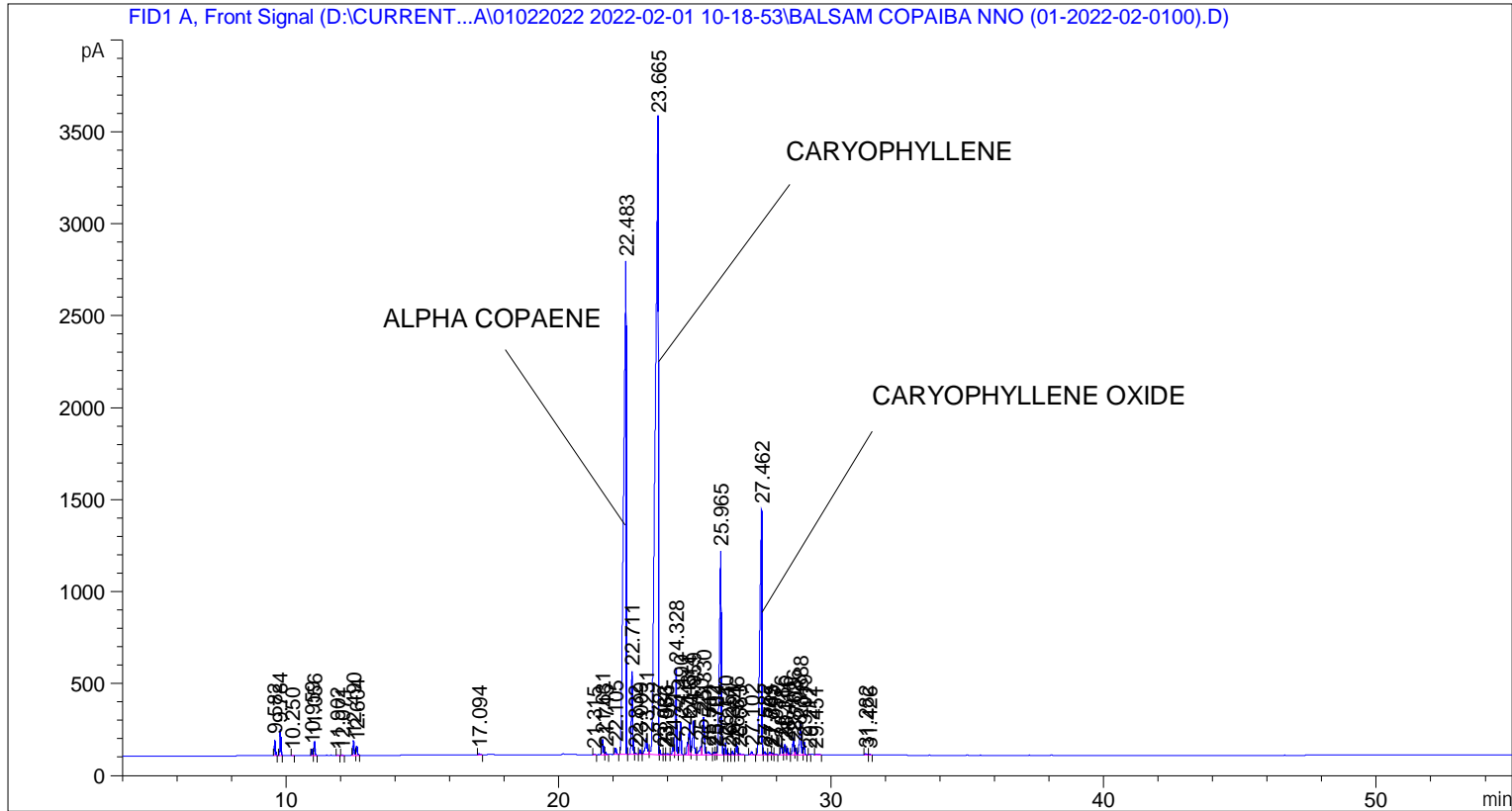


```

=====
Acq. Operator   : SYSTEM                               Seq. Line :    5
Acq. Instrument : BMV_NEW_GC_7820                     Location  : Vial 105
Injection Date  : 01-Feb-22 2:51:42 PM                Inj       :    1
                                                    Inj Volume: 0.5 µl

Acq. Method     : D:\CURRENT DATA\DATA\01022022 2022-02-01 10-18-53\UNIVERSAL BMV.M
Last changed    : 01-Feb-22 10:19:03 AM by SYSTEM
Analysis Method : C:\CHEM32\2\METHODS\COOLING.M
Last changed    : 02-Mar-22 3:39:23 PM by SYSTEM
                  (modified after loading)

Additional Info  : Peak(s) manually integrated
  
```



=====
 Area Percent Report
 =====

```

Sorted By      :      Signal
Multiplier     :      1.0000
Dilution      :      1.0000
Do not use Multiplier & Dilution Factor with ISTDs
  
```

Signal 1: FID1 A, Front Signal

Peak #	RetTime [min]	Type	Width [min]	Area [pA*s]	Height [pA]	Area %
1	9.582	BB	0.0393	224.82988	86.53491	0.33999
2	9.784	BB	0.0412	389.66849	145.88397	0.58926
3	10.250	BB	0.0413	4.92284	1.77764	0.00744
4	10.959	BV	0.0404	90.21086	34.66814	0.13642
5	11.056	VB	0.0438	209.15982	74.28664	0.31629
6	11.902	BB	0.0434	5.58523	2.01229	0.00845
7	12.071	BB	0.0433	7.95130	2.87361	0.01202

Peak #	RetTime [min]	Type	Width [min]	Area [pA*s]	Height [pA]	Area %
8	12.490	BV	0.0457	237.98682	80.10074	0.35989
9	12.604	VB	0.0475	155.71164	49.80836	0.23547
10	17.094	BB	0.0659	28.37892	6.25335	0.04291
11	21.315	BB	0.0484	12.22152	3.81294	0.01848
12	21.631	BV	0.0528	280.51608	82.22053	0.42420
13	21.745	VB	0.0572	41.24153	11.12821	0.06237
14	22.105	BB	0.0591	129.22325	34.16426	0.19541
15	22.483	BV	0.0794	1.65957e4	2675.87476	25.09628
16	22.711	VV	0.0505	1576.53198	453.65649	2.38405
17	22.832	VV	0.0571	38.19694	9.46277	0.05776
18	23.009	VV	0.0471	78.60819	25.40234	0.11887
19	23.231	VV	0.0842	505.62872	89.10981	0.76462
20	23.665	VV	0.0953	2.58770e4	3457.55054	39.13162
21	23.727	VB	0.0403	65.45728	25.20823	0.09899
22	23.883	BV	0.0463	21.09652	6.77776	0.03190
23	23.966	VV	0.0803	34.97268	5.72089	0.05289
24	24.215	VV	0.0544	141.80984	39.93987	0.21445
25	24.328	VV	0.0490	1487.88843	469.68759	2.25001
26	24.490	VB	0.0487	544.88428	173.01341	0.82398
27	24.743	BV	0.0452	204.59419	67.79295	0.30939
28	24.814	VV	0.0507	568.77679	171.67973	0.86011
29	24.959	VV	0.0573	729.68750	183.69196	1.10344
30	25.230	VV	0.0722	235.48395	44.85471	0.35610
31	25.330	VV	0.0711	1044.56873	202.89798	1.57961
32	25.511	VV	0.0915	107.01236	15.69592	0.16183
33	25.702	VV	0.0485	41.70064	13.31136	0.06306
34	25.784	VV	0.0504	43.83608	12.36084	0.06629
35	25.965	VV	0.0619	4912.64746	1105.18750	7.42897
36	26.140	VV	0.0431	176.56654	64.12321	0.26701
37	26.251	VV	0.0494	25.85829	8.06310	0.03910
38	26.391	VV	0.0501	68.50433	20.96340	0.10359
39	26.546	VV	0.0512	183.42139	56.04509	0.27737
40	26.663	VB	0.0700	29.07521	5.74978	0.04397
41	27.102	BB	0.0624	71.36714	17.18800	0.10792
42	27.462	BV	0.0659	6739.69385	1334.41138	10.19186
43	27.582	VV	0.0546	56.36836	15.80818	0.08524
44	27.765	VV	0.0522	49.13371	14.26115	0.07430
45	27.843	VV	0.0574	39.44741	10.35751	0.05965
46	27.957	VB	0.0697	13.82464	2.79359	0.02091
47	28.186	BV	0.0554	215.67552	59.30843	0.32615
48	28.316	VV	0.0499	189.95369	58.43431	0.28725
49	28.411	VV	0.0524	126.03139	36.35872	0.19059
50	28.626	VV	0.0535	326.81717	91.89079	0.49422
51	28.708	VV	0.0485	113.97848	36.44669	0.17236
52	28.888	VV	0.0664	743.29279	171.92258	1.12402
53	29.019	VB	0.0469	207.54921	69.37247	0.31386
54	29.212	BV	0.0470	7.90510	2.42993	0.01195
55	29.451	BB	0.1153	26.03099	2.83047	0.03936
56	31.282	BV	0.0705	31.07625	6.64918	0.04699
57	31.426	VB	0.0530	12.88884	3.76046	0.01949

Totals : 6.61282e4 1.19536e4

=====
*** End of Report ***