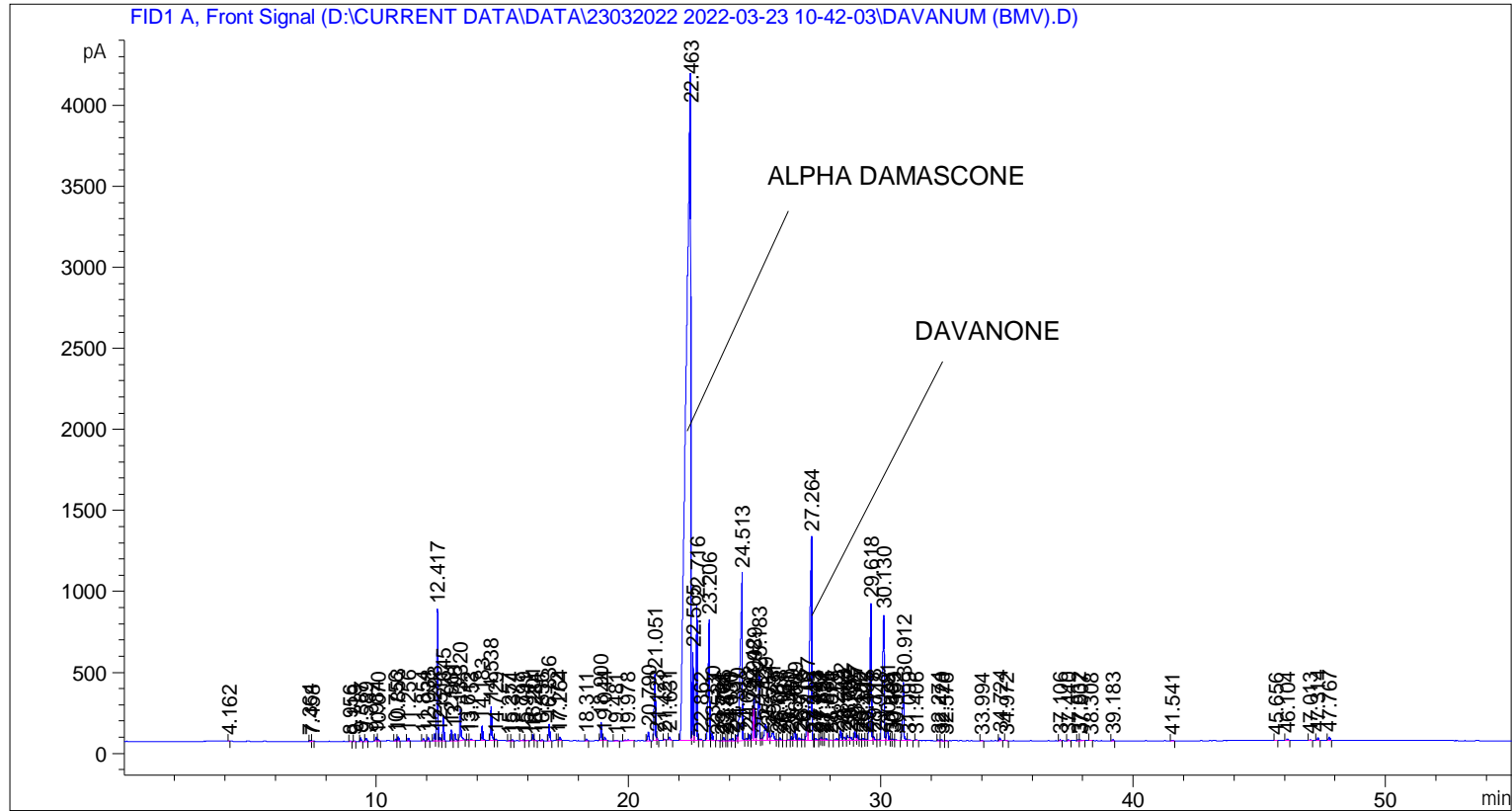


```
=====
Acq. Operator   : SYSTEM                               Seq. Line :    5
Acq. Instrument : BMV_NEW_GC_7820                     Location  : Vial 105
Injection Date  : 23-Mar-22 2:22:23 PM                 Inj       :    1
                                                    Inj Volume: 0.5 µl

Acq. Method    : D:\CURRENT DATA\DATA\23032022 2022-03-23 10-42-03\UNIVERSAL BMV.M
Last changed   : 23-Mar-22 10:42:15 AM by SYSTEM
Analysis Method: C:\CHEM32\2\METHODS\UNIVERSAL BMV.M
Last changed   : 18-Jan-22 11:01:44 AM by SYSTEM
=====
```



=====
 Area Percent Report
 =====

```
Sorted By      : Signal
Multiplier     : 1.0000
Dilution       : 1.0000
Do not use Multiplier & Dilution Factor with ISTDs
```

Signal 1: FID1 A, Front Signal

Peak #	RetTime [min]	Type	Width [min]	Area [pA*s]	Height [pA]	Area %
1	4.162	BB	0.0287	2.78398	1.49778	0.00291
2	7.364	BV	0.0403	21.72910	7.85014	0.02275
3	7.458	VB	0.0479	10.53063	3.24065	0.01102
4	8.956	BB	0.0416	9.58111	3.42905	0.01003
5	9.119	BB	0.0435	7.05194	2.45277	0.00738
6	9.387	BB	0.0420	60.60716	22.83246	0.06344
7	9.589	BB	0.0421	51.99808	18.91429	0.05443
8	9.984	BV	0.0513	91.81776	24.71146	0.09611
9	10.070	VB	0.0479	28.99082	8.92561	0.03035

Sample Name: DAVANUM (BMV)

Peak #	RetTime [min]	Type	Width [min]	Area [pA*s]	Height [pA]	Area %
10	10.756	BV	0.0433	36.66786	12.83187	0.03838
11	10.853	VB	0.0423	78.76757	28.47169	0.08245
12	11.256	BB	0.0413	54.53735	20.30826	0.05709
13	11.854	BB	0.0422	43.77359	15.36027	0.04582
14	12.038	BB	0.0437	63.80196	22.75954	0.06679
15	12.293	BV	0.0475	121.45705	41.05001	0.12714
16	12.417	VV	0.0445	2407.26270	813.39996	2.51992
17	12.511	VV	0.0455	66.47500	21.86152	0.06959
18	12.645	VB	0.0427	421.85535	155.49362	0.44160
19	12.961	BB	0.0415	184.75137	68.36416	0.19340
20	13.108	BB	0.0458	143.45695	46.79013	0.15017
21	13.320	BB	0.0595	725.59692	190.30148	0.75956
22	13.612	BV	0.0411	15.80702	5.92733	0.01655
23	13.753	VB	0.0603	36.82124	8.71549	0.03854
24	14.183	BB	0.0455	270.77817	91.47832	0.28345
25	14.538	BV	0.0477	671.04358	213.10320	0.70245
26	14.729	VB	0.0533	33.27866	9.18910	0.03484
27	15.257	BV	0.0509	6.94000	2.08202	0.00726
28	15.374	VB	0.0460	21.02803	7.01345	0.02201
29	15.799	BV	0.0577	16.50782	4.21352	0.01728
30	15.941	VB	0.0466	11.25293	3.79074	0.01178
31	16.201	BV	0.0462	105.84003	35.10899	0.11079
32	16.284	VB	0.0439	6.75910	2.55386	0.00708
33	16.556	BB	0.0508	21.24096	6.39117	0.02224
34	16.836	BB	0.0477	323.47507	102.91997	0.33861
35	17.172	BV	0.0525	12.61809	3.46361	0.01321
36	17.264	VB	0.0541	67.13377	19.07589	0.07028
37	18.311	BB	0.0570	34.71005	8.99822	0.03633
38	18.900	BV	0.0457	332.48709	115.26024	0.34805
39	19.044	VB	0.0579	80.63614	20.47912	0.08441
40	19.481	BB	0.0761	17.67332	3.16714	0.01850
41	19.978	BB	0.1432	65.38185	5.64370	0.06844
42	20.790	BB	0.0541	184.49411	52.37321	0.19313
43	21.051	BV	0.0507	1362.44727	411.09933	1.42621
44	21.123	VB	0.0362	45.90713	19.00232	0.04806
45	21.421	BB	0.0518	23.70308	6.95219	0.02481
46	21.631	BB	0.0551	76.63020	20.72594	0.08022
47	22.463	BV	0.1458	5.01044e4	4122.10840	52.44926
48	22.565	VV	0.0410	1439.81921	542.22089	1.50720
49	22.716	VV	0.0486	2775.36743	838.61163	2.90526
50	22.862	VB	0.0579	30.97660	8.04561	0.03243
51	23.206	BV	0.0508	2727.66235	744.17395	2.85532
52	23.330	VB	0.0470	135.31973	45.10903	0.14165
53	23.524	BB	0.0587	10.58180	2.75908	0.01108
54	23.704	BV	0.0423	9.17042	3.31618	0.00960
55	23.786	VV	0.0523	72.80852	21.09104	0.07622
56	23.874	VV	0.0508	11.48798	3.45468	0.01203
57	24.030	VV	0.0638	46.26150	10.42409	0.04843
58	24.131	VV	0.0515	45.30462	13.37470	0.04742
59	24.310	VV	0.0473	108.97337	35.01363	0.11407
60	24.513	VV	0.0714	5602.48193	1030.91052	5.86468
61	24.688	VV	0.0587	68.60351	16.43005	0.07181
62	24.792	VV	0.0536	143.22203	42.15049	0.14992
63	24.942	VV	0.0437	608.06622	210.65048	0.63652

Sample Name: DAVANUM (BMV)

Peak #	RetTime [min]	Type	Width [min]	Area [pA*s]	Height [pA]	Area %
64	24.989	VV	0.0446	852.13904	279.52502	0.89202
65	25.183	VV	0.0541	1514.70081	409.57272	1.58559
66	25.272	VV	0.0464	47.92197	14.56924	0.05016
67	25.439	VV	0.0839	609.38153	100.20793	0.63790
68	25.534	VV	0.0601	228.06699	51.03989	0.23874
69	25.731	VV	0.0979	394.76694	54.91412	0.41324
70	25.889	VV	0.0725	29.28012	6.15659	0.03065
71	26.013	VV	0.0523	62.09589	17.52867	0.06500
72	26.161	VB	0.0241	1.40804	1.35281	0.00147
73	26.340	BV	0.0638	14.54287	3.62163	0.01522
74	26.460	VV	0.0478	69.85149	22.77354	0.07312
75	26.609	VV	0.0642	281.79129	68.15620	0.29498
76	26.775	VV	0.0724	71.44166	14.02368	0.07479
77	26.918	VV	0.0579	28.99108	7.70157	0.03035
78	27.077	VV	0.0498	313.42926	96.78271	0.32810
79	27.264	VV	0.0726	7074.42920	1258.42883	7.40552
80	27.343	VV	0.0292	5.55644	2.92409	0.00582
81	27.423	VV	0.0820	72.50636	12.44416	0.07590
82	27.597	VV	0.0434	39.94514	13.94036	0.04181
83	27.652	VV	0.0511	69.04198	20.59498	0.07227
84	27.724	VV	0.0456	33.18227	10.58394	0.03474
85	27.836	VV	0.0858	82.25838	12.99829	0.08611
86	28.014	VV	0.0775	20.99680	3.57609	0.02198
87	28.259	VV	0.0920	81.20557	11.69520	0.08501
88	28.422	VV	0.0636	257.26321	61.72605	0.26930
89	28.548	VV	0.0761	123.54424	23.21780	0.12933
90	28.682	VV	0.0670	158.18120	33.55194	0.16558
91	28.797	VV	0.0807	129.88997	21.43672	0.13597
92	28.977	VV	0.0572	223.58464	57.75014	0.23405
93	29.077	VV	0.0627	148.34325	34.85250	0.15529
94	29.182	VV	0.0473	30.98980	9.68983	0.03244
95	29.322	VV	0.0728	65.41159	12.54177	0.06847
96	29.405	VV	0.0537	39.84506	10.63953	0.04171
97	29.618	VV	0.0608	3603.35156	843.62714	3.77199
98	29.718	VV	0.0725	118.33286	23.21146	0.12387
99	29.948	VV	0.0721	40.00155	7.16876	0.04187
100	30.130	VV	0.0673	3742.78296	776.21466	3.91795
101	30.281	VV	0.0836	330.95398	62.66438	0.34644
102	30.394	VV	0.0499	26.25879	7.14432	0.02749
103	30.483	VV	0.0551	37.42601	9.89145	0.03918
104	30.592	VB	0.0847	37.55400	5.63652	0.03931
105	30.912	BB	0.0572	1454.48413	359.20432	1.52255
106	31.099	BB	0.1041	49.08938	6.15307	0.05139
107	31.406	BB	0.0576	15.67609	4.10344	0.01641
108	32.274	BV	0.0491	25.56653	8.02913	0.02676
109	32.420	VB	0.0531	23.91144	7.13561	0.02503
110	32.576	BB	0.0512	8.04822	2.33392	0.00842
111	33.994	BB	0.0498	12.21115	3.76426	0.01278
112	34.724	BB	0.0542	58.82528	15.88206	0.06158
113	34.972	BB	0.0456	10.06842	3.49218	0.01054
114	37.106	BB	0.0458	16.44932	5.84453	0.01722
115	37.440	BB	0.0494	23.87156	7.44382	0.02499
116	37.832	BV	0.0538	24.67956	7.04957	0.02583
117	37.907	VB	0.0845	35.55144	5.72323	0.03722

Sample Name: DAVANUM (BMV)

Peak #	RetTime [min]	Type	Width [min]	Area [pA*s]	Height [pA]	Area %
118	38.308	BB	0.0488	9.12859	2.54546	0.00956
119	39.183	BB	0.0515	22.20109	6.39135	0.02324
120	41.541	BB	0.0533	11.50589	3.50653	0.01204
121	45.656	BB	0.0466	7.30128	2.15358	0.00764
122	46.104	BB	0.0607	40.57374	9.93090	0.04247
123	47.013	BB	0.0520	18.08500	5.15199	0.01893
124	47.314	BB	0.0571	59.18287	15.30059	0.06195
125	47.767	BB	0.0552	71.58614	18.88723	0.07494

Totals : 9.55292e4 1.53955e4

=====
*** End of Report ***