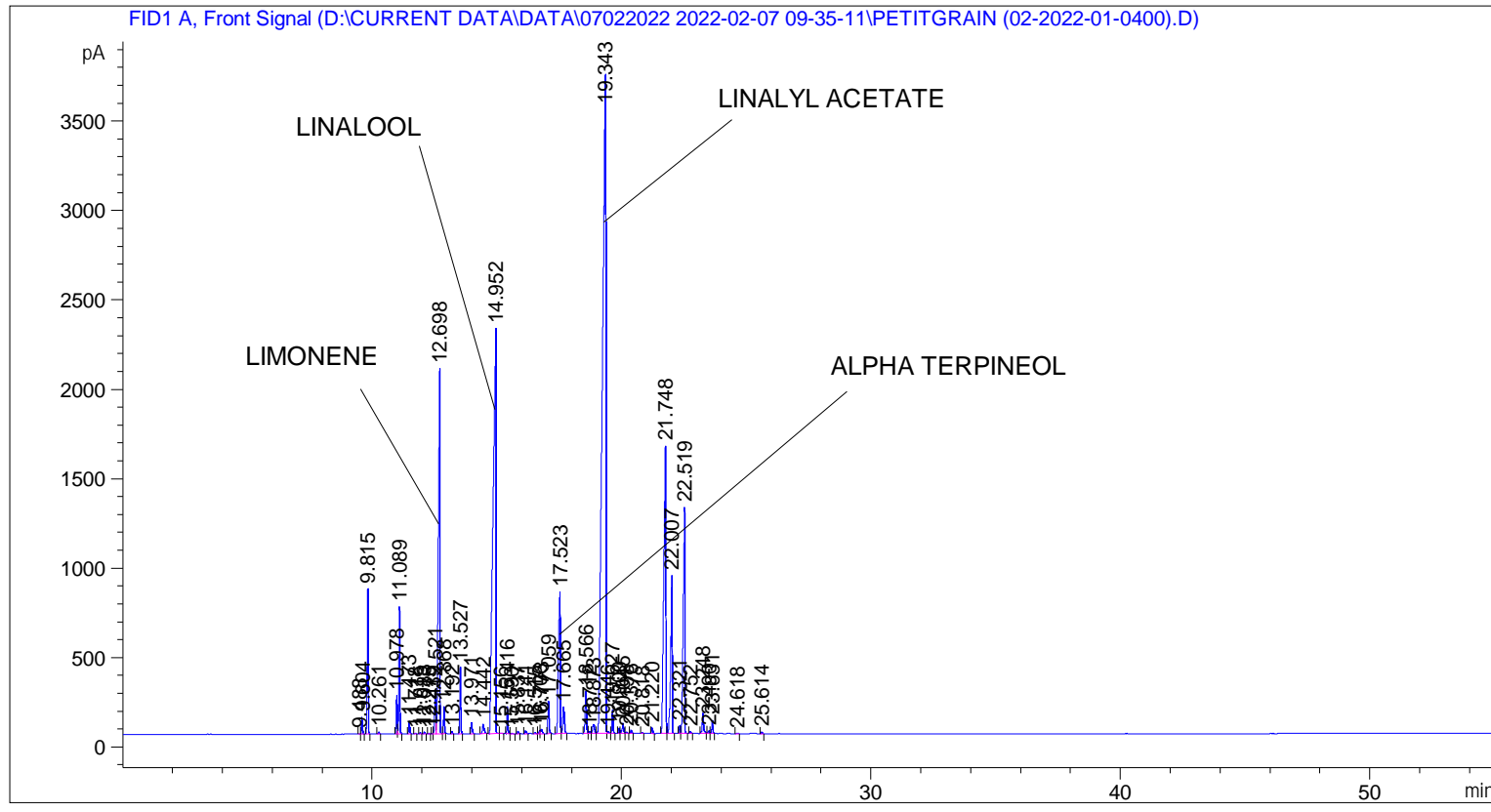


```

=====
Acq. Operator   : SYSTEM                               Seq. Line :    2
Acq. Instrument : BMV_NEW_GC_7820                     Location  : Vial 102
Injection Date  : 07-Feb-22 10:50:30 AM                Inj       :    1
                                                    Inj Volume: 0.5 µl

Acq. Method    : D:\CURRENT DATA\DATA\07022022 2022-02-07 09-35-11\UNIVERSAL BMV.M
Last changed   : 07-Feb-22 9:35:21 AM by SYSTEM
Analysis Method: C:\CHEM32\2\METHODS\COOLING.M
Last changed   : 03-Mar-22 11:45:09 AM by SYSTEM
                (modified after loading)
  
```



=====
 Area Percent Report
 =====

```

Sorted By      :      Signal
Multiplier     :      1.0000
Dilution      :      1.0000
Do not use Multiplier & Dilution Factor with ISTDs
  
```

Signal 1: FID1 A, Front Signal

Peak #	RetTime [min]	Type	Width [min]	Area [pA*s]	Height [pA]	Area %
1	9.488	BV	0.0406	5.42572	2.13622	0.00545
2	9.604	VB	0.0409	248.44789	93.89491	0.24959
3	9.815	BB	0.0425	2182.64331	809.60822	2.19271
4	10.261	BB	0.0481	35.08828	11.04723	0.03525
5	10.978	BV	0.0454	618.98145	216.01917	0.62184
6	11.089	VB	0.0433	1967.43005	709.74774	1.97651
7	11.473	BB	0.0422	191.30516	69.20715	0.19219
8	11.718	BB	0.0502	14.18347	4.32872	0.01425

Peak #	RetTime [min]	Type	Width [min]	Area [pA*s]	Height [pA]	Area %
9	11.915	BB	0.0450	17.91179	5.97363	0.01799
10	12.083	BB	0.0429	25.14774	9.20898	0.02526
11	12.275	BB	0.0438	11.67324	4.15776	0.01173
12	12.439	BV	0.0368	13.76874	5.58170	0.01383
13	12.521	VV	0.0614	859.85992	225.81131	0.86383
14	12.698	VV	0.0597	8859.97559	2038.18140	8.90085
15	12.868	VB	0.0414	411.68250	153.13573	0.41358
16	13.192	BB	0.0419	38.90382	14.22827	0.03908
17	13.527	BB	0.0427	1008.85968	371.82193	1.01351
18	13.971	BB	0.0508	210.42960	63.26365	0.21140
19	14.442	BB	0.0658	242.88033	52.71780	0.24400
20	14.952	BV	0.1038	1.85814e4	2262.05981	18.66707
21	15.156	VB	0.0348	5.05773	2.47425	0.00508
22	15.416	BB	0.0421	409.44540	153.48419	0.41133
23	15.590	BB	0.0448	11.12671	3.96178	0.01118
24	15.837	BB	0.0494	43.05362	13.44627	0.04325
25	16.141	BB	0.0551	59.42831	16.47295	0.05970
26	16.515	BB	0.0503	23.79804	7.06805	0.02391
27	16.706	BV	0.0465	52.30867	17.17118	0.05255
28	16.773	VB	0.0592	108.79561	26.35033	0.10930
29	17.059	BB	0.0491	576.70288	181.58173	0.57936
30	17.523	BV	0.0725	4234.59082	790.10767	4.25412
31	17.665	VB	0.0728	674.08289	148.87100	0.67719
32	18.566	BV	0.0554	898.86334	235.99692	0.90301
33	18.712	VV	0.0639	45.83422	10.92511	0.04605
34	18.873	VV	0.0760	271.79102	51.17652	0.27304
35	19.343	VV	0.1223	3.63946e4	3683.73657	36.56253
36	19.446	VV	0.0552	46.81078	11.81977	0.04703
37	19.627	VB	0.0405	342.53531	131.03426	0.34412
38	19.900	BV	0.0404	76.28605	29.28619	0.07664
39	20.045	VV	0.0542	216.66971	57.24314	0.21767
40	20.198	VB	0.0650	25.16424	5.75346	0.02528
41	20.376	BB	0.0538	63.91496	18.72404	0.06421
42	20.818	BB	0.0401	8.92137	3.46362	0.00896
43	21.220	BB	0.0475	95.45082	31.35965	0.09589
44	21.748	BV	0.0768	9204.97852	1607.17676	9.24744
45	22.007	VB	0.0570	3547.54492	881.31470	3.56391
46	22.321	BV	0.0447	123.40218	42.66222	0.12397
47	22.519	VB	0.0610	5630.13184	1262.14417	5.65610
48	22.752	BB	0.0517	36.41793	10.70784	0.03659
49	23.248	BB	0.0572	444.59799	114.69250	0.44665
50	23.490	BV	0.0545	58.06549	16.33611	0.05833
51	23.631	VB	0.0451	218.42145	74.65265	0.21943
52	24.618	BB	0.0703	15.26946	3.28222	0.01534
53	25.614	BB	0.0464	30.76327	10.44162	0.03091

Totals : 9.95408e4 1.67771e4

=====
 *** End of Report ***