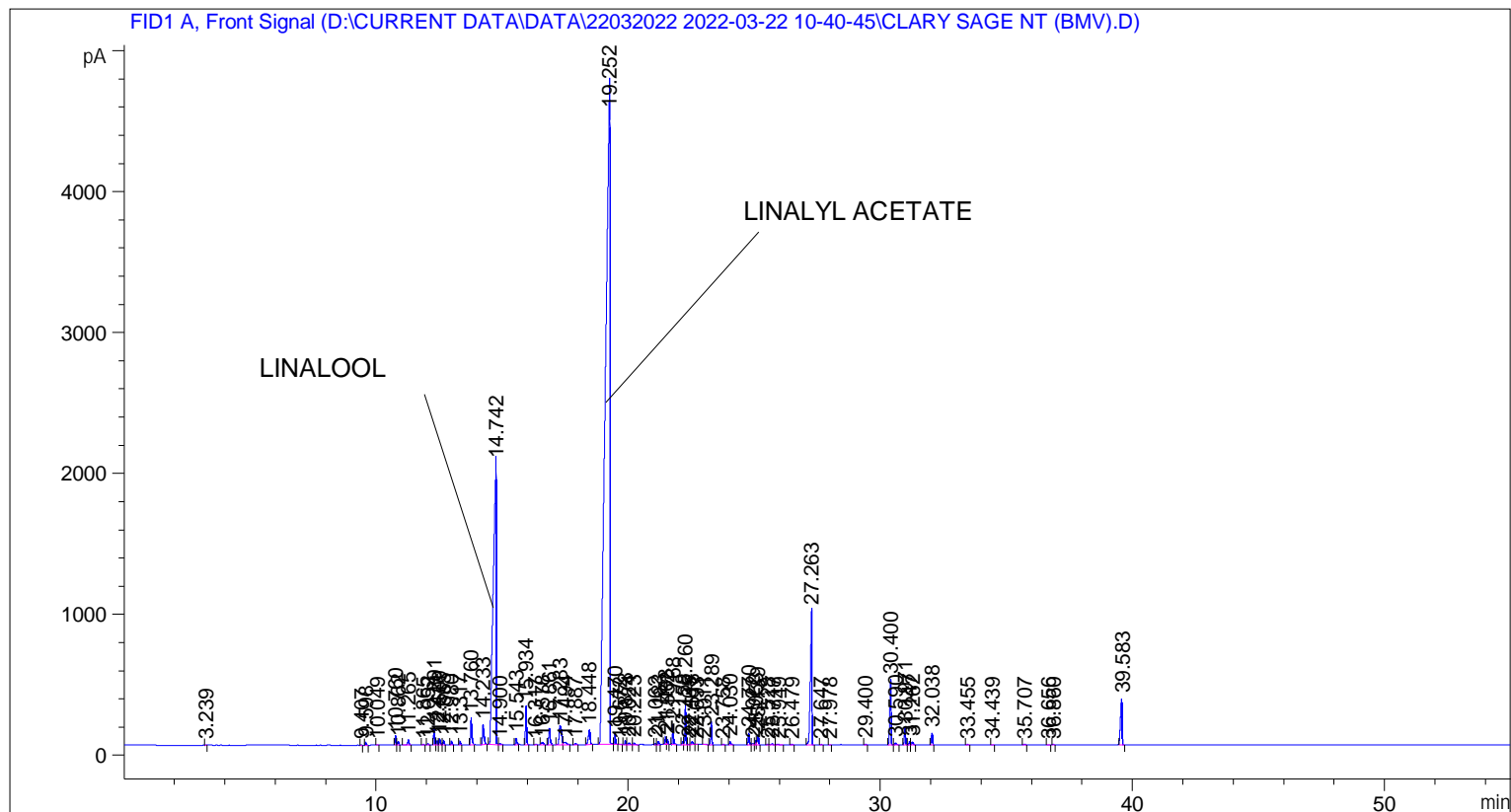


```

=====
Acq. Operator   : SYSTEM                               Seq. Line :    5
Acq. Instrument : BMV_NEW_GC_7820                     Location  : Vial 105
Injection Date  : 22-Mar-22 3:18:44 PM                 Inj       :    1
                                                    Inj Volume: 0.5 µl

Acq. Method    : D:\CURRENT DATA\DATA\22032022 2022-03-22 10-40-45\UNIVERSAL BMV.M
Last changed   : 22-Mar-22 10:40:56 AM by SYSTEM
Analysis Method: C:\CHEM32\2\METHODS\COOLING.M
Last changed   : 22-Mar-22 3:22:27 PM by SYSTEM
                (modified after loading)
  
```



=====  
 Area Percent Report  
 =====

```

Sorted By      : Signal
Multiplier     : 1.0000
Dilution      : 1.0000
Do not use Multiplier & Dilution Factor with ISTDs
  
```

Signal 1: FID1 A, Front Signal

Peak #	RetTime [min]	Type	Width [min]	Area [pA*s]	Height [pA]	Area %
1	3.239	BB	0.0317	6.02625	2.84837	0.00650
2	9.407	BB	0.0401	10.47314	4.06523	0.01129
3	9.598	BB	0.0432	57.47020	20.82676	0.06195
4	10.049	BB	0.0449	12.86152	4.42670	0.01387
5	10.760	BV	0.0428	193.44363	70.86002	0.20854
6	10.862	VB	0.0463	77.78330	25.68881	0.08385
7	11.265	BB	0.0518	133.76268	38.24933	0.14420
8	11.865	BB	0.0468	16.83480	5.48277	0.01815

Sample Name: CLARY SAGE NT (BMV)

Peak #	RetTime [min]	Type	Width [min]	Area [pA*s]	Height [pA]	Area %
9	12.052	BB	0.0496	40.00848	12.09062	0.04313
10	12.291	BV	0.0445	373.55649	134.12044	0.40271
11	12.411	VV	0.0482	97.50505	31.45057	0.10511
12	12.509	VB	0.0459	133.50314	44.60366	0.14392
13	12.665	BB	0.0441	88.00767	31.02038	0.09488
14	12.980	BB	0.0461	83.56216	28.60558	0.09008
15	13.317	BB	0.0458	73.26437	25.26892	0.07898
16	13.760	BB	0.0520	644.94830	193.10789	0.69528
17	14.233	BB	0.0633	580.76019	140.18625	0.62608
18	14.742	BV	0.1034	1.64717e4	1993.55505	17.75710
19	14.900	VB	0.0542	24.77455	6.54541	0.02671
20	15.543	BB	0.0526	163.18015	45.76773	0.17591
21	15.934	BB	0.0451	778.17249	273.91241	0.83890
22	16.317	BB	0.0598	17.80901	4.44188	0.01920
23	16.578	BB	0.0747	90.60522	17.70368	0.09768
24	16.861	BB	0.0591	438.82220	113.62762	0.47307
25	17.283	BV	0.0968	919.83466	131.15834	0.99161
26	17.494	VB	0.1009	127.23118	16.51223	0.13716
27	17.887	BB	0.0646	36.98596	8.53532	0.03987
28	18.448	BB	0.0743	525.15381	105.14668	0.56613
29	19.252	BV	0.1559	5.86207e4	4718.31738	63.19520
30	19.470	VB	0.0422	208.79628	78.17483	0.22509
31	19.672	BB	0.0421	6.17816	2.31863	0.00666
32	19.878	BV	0.0443	83.81499	29.33691	0.09036
33	20.024	VV	0.0688	60.40781	12.86494	0.06512
34	20.223	VB	0.0498	36.64156	11.29954	0.03950
35	21.062	BV	0.0430	23.13158	8.43652	0.02494
36	21.183	VB	0.0474	70.53328	23.26787	0.07604
37	21.468	BV	0.0519	174.41655	53.66901	0.18803
38	21.552	VB	0.0462	96.96154	32.13808	0.10453
39	21.768	BB	0.0466	422.40915	142.63387	0.45537
40	22.158	BV	0.0460	74.99607	25.71446	0.08085
41	22.260	VB	0.0452	887.31427	302.48148	0.95656
42	22.405	BV	0.0469	14.36636	4.80109	0.01549
43	22.518	VV	0.0801	104.60119	20.65139	0.11276
44	22.693	VB	0.0431	9.22271	3.45980	0.00994
45	23.011	BB	0.0862	31.22465	4.78092	0.03366
46	23.289	BB	0.0478	503.79364	163.99580	0.54311
47	23.758	BB	0.0508	16.45667	4.94600	0.01774
48	24.030	BB	0.0568	76.47611	19.90256	0.08244
49	24.770	BV	0.0492	272.40015	85.42875	0.29366
50	24.922	VV	0.0663	40.51334	8.70673	0.04367
51	25.053	VV	0.0482	101.02744	31.64337	0.10891
52	25.139	VB	0.0488	229.80011	70.99032	0.24773
53	25.528	BV	0.0523	22.70675	6.74211	0.02448
54	25.717	VV	0.0702	45.12384	8.89554	0.04865
55	25.949	VB	0.0795	30.83160	5.24965	0.03324
56	26.479	BB	0.0498	15.59192	5.08291	0.01681
57	27.263	BB	0.0629	4165.96436	954.52161	4.49106
58	27.647	BB	0.0473	9.02771	3.06690	0.00973
59	27.978	BB	0.0447	8.04725	2.78238	0.00868
60	29.400	BB	0.0555	26.74284	7.17933	0.02883
61	30.400	BV	0.0539	1618.77039	461.45786	1.74509
62	30.590	VB	0.0566	51.76173	13.52727	0.05580

Peak #	RetTime [min]	Type	Width [min]	Area [pA*s]	Height [pA]	Area %
63	30.971	BB	0.0510	394.40701	121.12123	0.42518
64	31.147	BV	0.0494	68.07395	21.82964	0.07339
65	31.262	VB	0.0586	85.31163	21.36588	0.09197
66	32.038	BB	0.0508	279.88461	88.78072	0.30173
67	33.455	BB	0.0585	18.56773	4.75990	0.02002
68	34.439	BB	0.0545	10.00786	2.81415	0.01079
69	35.707	BB	0.0514	23.39180	7.11520	0.02522
70	36.656	BB	0.0529	8.53772	2.63099	0.00920
71	36.860	BB	0.0529	17.44400	4.97264	0.01881
72	39.583	BB	0.0687	1476.89014	326.98117	1.59214

Totals : 9.27614e4 1.14606e4

=====  
\*\*\* End of Report \*\*\*