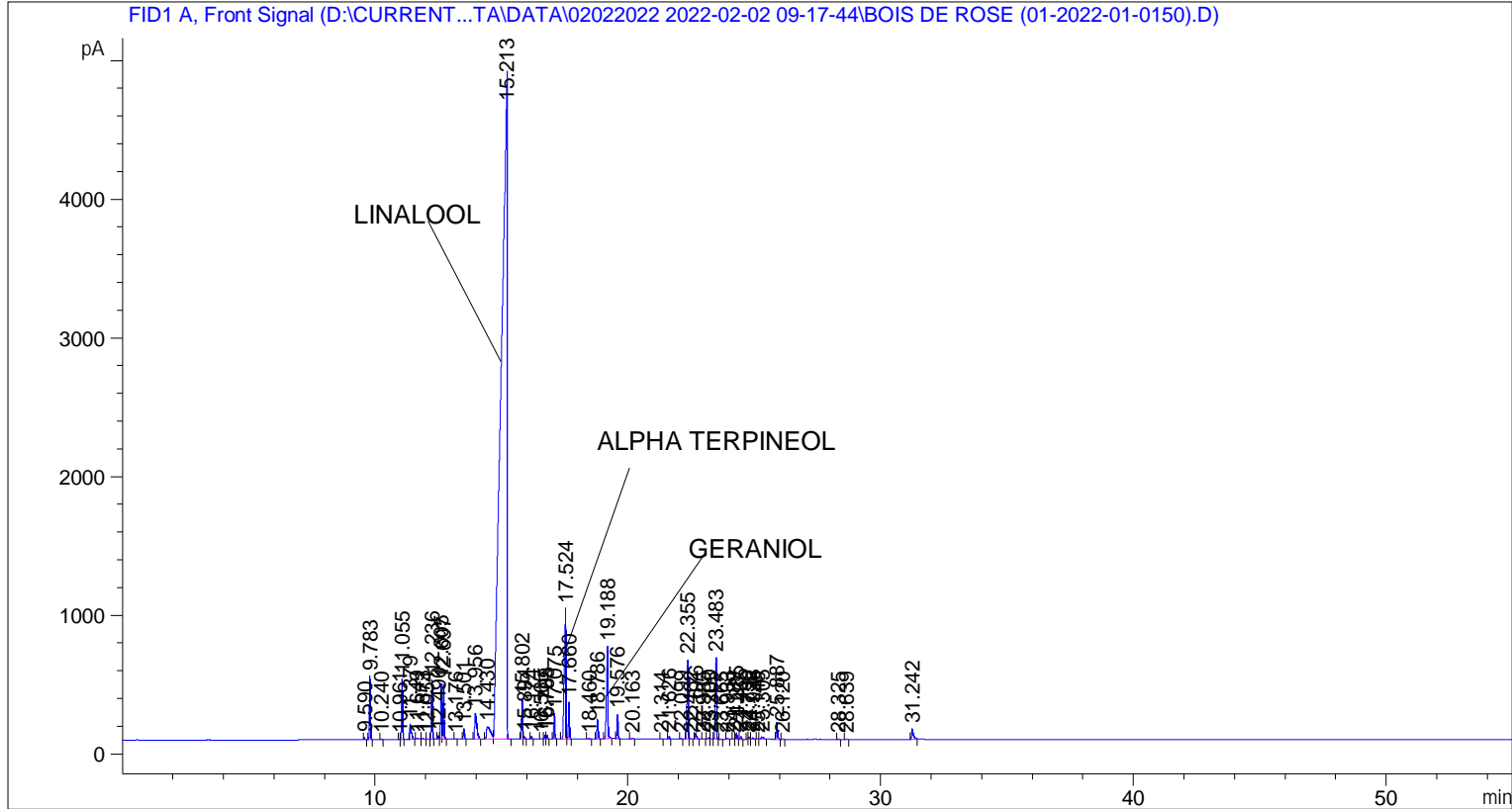


```

=====
Acq. Operator   : SYSTEM                               Seq. Line :    5
Acq. Instrument : BMV_NEW_GC_7820                     Location  : Vial 105
Injection Date  : 02-Feb-22 1:49:48 PM                 Inj       :    1
                                                    Inj Volume: 0.5 µl

Acq. Method     : D:\CURRENT DATA\DATA\02022022 2022-02-02 09-17-44\UNIVERSAL BMV.M
Last changed    : 02-Feb-22 9:17:55 AM by SYSTEM
Analysis Method : C:\CHEM32\2\METHODS\COOLING.M
Last changed    : 02-Mar-22 3:50:59 PM by SYSTEM
                (modified after loading)

Additional Info  : Peak(s) manually integrated
  
```



=====
 Area Percent Report
 =====

```

Sorted By      :      Signal
Multiplier     :      1.0000
Dilution      :      1.0000
Do not use Multiplier & Dilution Factor with ISTDs
  
```

Signal 1: FID1 A, Front Signal

Peak #	RetTime [min]	Type	Width [min]	Area [pA*s]	Height [pA]	Area %
1	9.590	BB	0.0393	33.49663	13.32887	0.03229
2	9.783	BB	0.0418	1212.22400	458.81555	1.16844
3	10.240	BB	0.0459	18.27853	6.11692	0.01762
4	10.961	BV	0.0372	9.04688	3.88178	0.00872
5	11.055	VB	0.0428	1190.66785	437.26129	1.14766
6	11.379	BB	0.0547	446.38000	114.02016	0.43026
7	11.649	BV	0.0773	40.24082	7.41880	0.03879

Peak #	RetTime [min]	Type	Width [min]	Area [pA*s]	Height [pA]	Area %
8	11.873	VB	0.0387	16.49600	6.70388	0.01590
9	12.054	BV	0.0428	9.56010	3.50383	0.00921
10	12.236	VB	0.0432	1189.60925	430.87735	1.14664
11	12.490	BV	0.0411	62.10553	24.10861	0.05986
12	12.605	VV	0.0457	1159.72656	402.02078	1.11784
13	12.697	VB	0.0426	1059.66711	391.33041	1.02139
14	13.176	BB	0.0430	9.96839	3.63913	0.00961
15	13.501	BB	0.0440	217.61940	77.04238	0.20976
16	13.956	BB	0.0831	1080.64893	187.80290	1.04162
17	14.430	BV	0.1474	997.98682	89.28304	0.96194
18	15.213	VV	0.1992	7.95812e4	4830.42969	76.70696
19	15.802	BV	0.0421	749.81232	281.11935	0.72273
20	15.894	VB	0.0420	49.77671	18.13974	0.04798
21	16.174	BB	0.0434	56.05606	20.17838	0.05403
22	16.565	BB	0.0511	7.82403	2.33173	0.00754
23	16.705	BV	0.0432	73.49513	26.61723	0.07084
24	16.788	VB	0.0450	82.35764	28.25262	0.07938
25	17.075	BB	0.0430	511.28244	186.37219	0.49282
26	17.524	BV	0.0594	4153.12402	942.85187	4.00312
27	17.660	VB	0.0428	720.24103	264.30411	0.69423
28	18.460	BB	0.0600	31.20855	7.28004	0.03008
29	18.786	BB	0.0482	434.73132	140.20230	0.41903
30	19.188	BB	0.0603	2686.01196	663.14331	2.58900
31	19.576	BB	0.0432	488.19260	176.65118	0.47056
32	20.163	BB	0.0768	27.91073	5.10556	0.02690
33	21.314	BB	0.0432	10.52627	3.81013	0.01015
34	21.626	BB	0.0452	50.99698	17.38517	0.04916
35	22.099	BB	0.0439	11.20661	3.97620	0.01080
36	22.355	BV	0.0489	1811.85413	572.51465	1.74641
37	22.462	VB	0.0564	18.79249	4.83101	0.01811
38	22.676	BB	0.0556	162.14691	42.41241	0.15629
39	22.985	BB	0.0510	9.04966	2.70926	0.00872
40	23.200	BV	0.0554	38.33320	10.29542	0.03695
41	23.305	VV	0.0529	11.47407	3.27184	0.01106
42	23.483	VB	0.0461	1934.40906	592.59259	1.86454
43	23.665	BB	0.0498	6.60531	1.98833	0.00637
44	23.933	BB	0.0524	17.69368	5.24354	0.01705
45	24.189	BV	0.0458	11.23453	3.77168	0.01083
46	24.285	VB	0.0501	139.32605	43.76541	0.13429
47	24.465	BB	0.0475	57.75671	18.96895	0.05567
48	24.730	BV	0.0413	19.06981	7.10318	0.01838
49	24.792	VV	0.0483	50.07933	15.67364	0.04827
50	24.938	VB	0.0594	45.54542	10.98939	0.04390
51	25.140	BV	0.0501	10.16019	3.19801	0.00979
52	25.305	VB	0.0873	102.87955	16.15270	0.09916
53	25.887	BB	0.0498	399.30090	123.37574	0.38488
54	26.120	BB	0.0491	14.28021	4.61076	0.01376
55	28.325	BB	0.0505	10.57412	3.38336	0.01019
56	28.639	BB	0.0565	15.08512	4.04871	0.01454
57	31.242	BB	0.0757	381.71936	73.39072	0.36793

Totals : 1.03747e5 1.18396e4

=====
*** End of Report ***