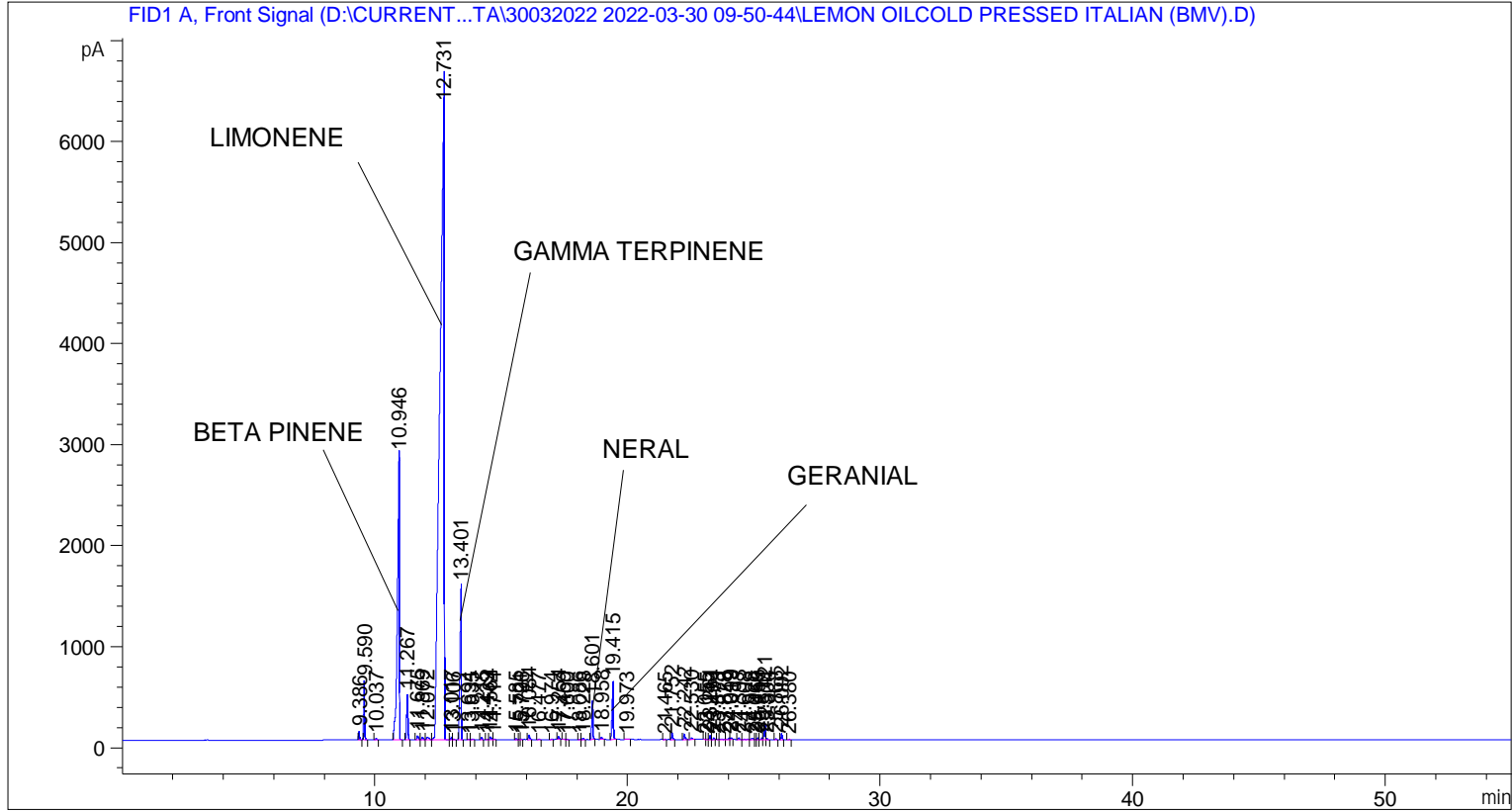


```

=====
Acq. Operator   : SYSTEM                               Seq. Line :    1
Acq. Instrument : BMV_NEW_GC_7820                     Location  : Vial 101
Injection Date  : 30-Mar-22 10:02:32 AM                Inj       :    1
                                                    Inj Volume: 0.5 µl

Acq. Method     : D:\CURRENT DATA\DATA\30032022 2022-03-30 09-50-44\UNIVERSAL BMV.M
Last changed    : 30-Mar-22 9:50:54 AM by SYSTEM
Analysis Method : C:\CHEM32\2\METHODS\COOLING.M
Last changed    : 02-Apr-22 1:53:54 PM by SYSTEM
                (modified after loading)
  
```



=====
 Area Percent Report
 =====

```

Sorted By       :      Signal
Multiplier      :      1.0000
Dilution       :      1.0000
Do not use Multiplier & Dilution Factor with ISTDs
  
```

Signal 1: FID1 A, Front Signal

Peak #	RetTime [min]	Type	Width [min]	Area [pA*s]	Height [pA]	Area %
1	9.386	BB	0.0433	230.13698	83.17262	0.21435
2	9.590	BB	0.0454	1673.65344	584.34583	1.55884
3	10.037	BB	0.0516	53.79269	15.82935	0.05010
4	10.946	BB	0.0745	1.48442e4	2817.39697	13.82580
5	11.267	BB	0.0522	1498.30237	446.01141	1.39551
6	11.675	BV	0.0697	173.16524	39.10510	0.16129
7	11.869	VB	0.0640	114.36176	27.24517	0.10652
8	12.072	BV	0.1097	152.11339	23.13992	0.14168

Peak #	RetTime [min]	Type	Width [min]	Area [pA*s]	Height [pA]	Area %
9	12.731	VV	0.1446	7.70353e4	6532.23145	71.75045
10	13.017	VV	0.0427	59.01849	21.73032	0.05497
11	13.106	VB	0.0404	13.50671	5.18492	0.01258
12	13.401	BB	0.0535	5677.55566	1523.52502	5.28806
13	13.694	BB	0.0428	10.49203	3.72761	0.00977
14	13.835	BB	0.0650	22.97935	5.15735	0.02140
15	14.215	BB	0.0429	61.16906	22.34934	0.05697
16	14.439	BV	0.0520	7.88598	2.42219	0.00734
17	14.564	VV	0.0535	109.15820	30.71036	0.10167
18	14.714	VB	0.0605	13.64880	3.42251	0.01271
19	15.585	BB	0.0459	26.86279	8.96862	0.02502
20	15.721	BV	0.0482	17.64535	5.69403	0.01643
21	15.796	VV	0.0482	10.16615	3.18734	0.00947
22	16.084	BB	0.0508	153.24580	44.91872	0.14273
23	16.477	BB	0.0532	11.43776	3.32130	0.01065
24	16.974	BB	0.0600	16.42815	4.16580	0.01530
25	17.254	BB	0.0523	96.04533	27.13194	0.08946
26	17.459	BB	0.0599	9.86961	2.56274	0.00919
27	17.600	BB	0.0447	5.48086	1.95803	0.00510
28	18.086	BB	0.0482	9.52457	2.98560	0.00887
29	18.228	BB	0.0513	43.62624	12.93615	0.04063
30	18.601	BB	0.0496	1184.75537	388.65936	1.10348
31	18.958	BB	0.0562	80.43095	20.74550	0.07491
32	19.415	BB	0.0544	2025.65503	571.22290	1.88669
33	19.973	BB	0.0889	33.01702	5.01061	0.03075
34	21.465	BB	0.0518	14.86550	4.46584	0.01385
35	21.752	BB	0.0482	212.32144	68.37296	0.19776
36	22.242	BB	0.0562	195.88998	52.92429	0.18245
37	22.530	BB	0.0708	63.06531	13.18218	0.05874
38	23.055	BV	0.0426	14.29449	5.44293	0.01331
39	23.155	VV	0.0502	9.54787	3.16301	0.00889
40	23.261	VV	0.0476	113.99585	38.39327	0.10618
41	23.404	VB	0.0491	43.31804	13.61923	0.04035
42	23.573	BV	0.0421	13.51385	5.07392	0.01259
43	23.828	VV	0.0743	33.56005	6.39148	0.03126
44	24.019	VV	0.0533	51.00168	14.39413	0.04750
45	24.099	VB	0.0483	56.62020	18.22071	0.05274
46	24.393	BB	0.0636	66.77889	16.35326	0.06220
47	24.608	BV	0.1262	30.25283	3.20346	0.02818
48	24.928	VV	0.0700	66.05312	14.28177	0.06152
49	25.060	VV	0.0516	11.17616	3.21313	0.01041
50	25.155	VV	0.0510	55.92700	17.15097	0.05209
51	25.311	VV	0.0516	68.43163	20.17340	0.06374
52	25.421	VV	0.0475	504.86267	165.78081	0.47023
53	25.504	VB	0.0426	34.62429	12.37807	0.03225
54	25.868	BB	0.0492	29.22548	9.42116	0.02722
55	26.092	BB	0.0500	189.49008	59.73550	0.17649
56	26.380	BB	0.0583	12.19583	3.21377	0.01136

Totals : 1.07366e5 1.38587e4

*** End of Report ***