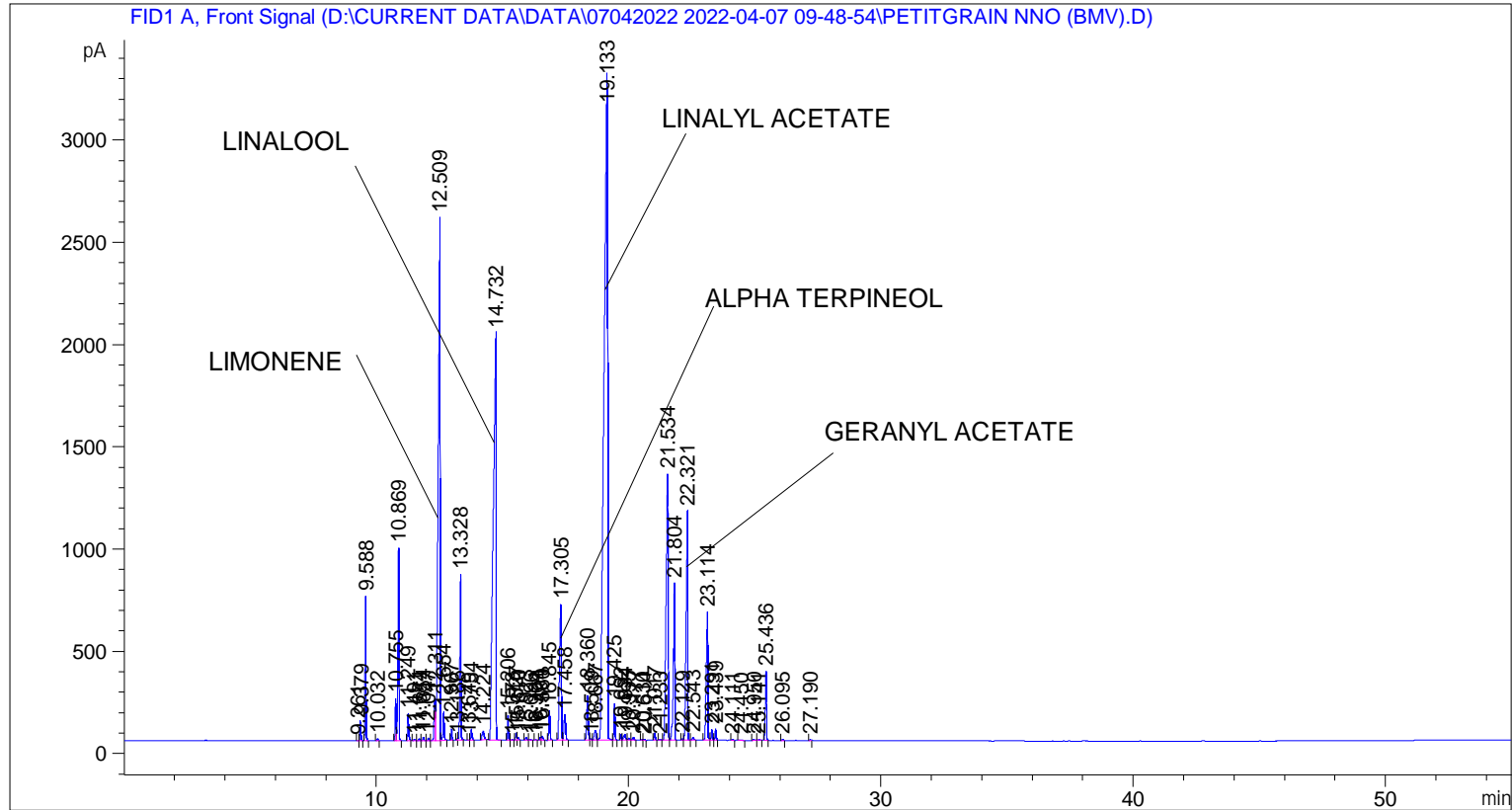


```

=====
Acq. Operator   : SYSTEM                               Seq. Line :    1
Acq. Instrument : BMV_NEW_GC_7820                     Location  : Vial 101
Injection Date  : 07-Apr-22 9:59:50 AM                 Inj       :    1
                                                    Inj Volume: 0.5 µl

Acq. Method     : D:\CURRENT DATA\DATA\07042022 2022-04-07 09-48-54\UNIVERSAL BMV.M
Last changed    : 07-Apr-22 9:49:05 AM by SYSTEM
Analysis Method : C:\CHEM32\2\METHODS\COOLING.M
Last changed    : 08-Apr-22 10:31:09 AM by SYSTEM
                (modified after loading)

Additional Info : Peak(s) manually integrated
  
```



=====  
 Area Percent Report  
 =====

```

Sorted By       : Signal
Multiplier      : 1.0000
Dilution       : 1.0000
Do not use Multiplier & Dilution Factor with ISTDs
  
```

Signal 1: FID1 A, Front Signal

Peak #	RetTime [min]	Type	Width [min]	Area [pA*s]	Height [pA]	Area %
1	9.261	BV	0.0394	4.39200	1.74287	0.00449
2	9.379	VB	0.0429	275.41357	100.73119	0.28156
3	9.588	BB	0.0433	1953.51892	705.27454	1.99714
4	10.032	BB	0.0490	33.77189	10.37728	0.03453
5	10.755	BV	0.0501	636.63147	205.85645	0.65085
6	10.869	VB	0.0459	2739.48145	942.06213	2.80066
7	11.249	BB	0.0446	384.49609	133.54715	0.39308

Sample Name: PETITGRAIN NNO (BMV)

Peak #	RetTime [min]	Type	Width [min]	Area [pA*s]	Height [pA]	Area %
8	11.491	BB	0.0545	17.96319	4.92790	0.01836
9	11.684	BV	0.0470	27.77214	8.99788	0.02839
10	11.854	VB	0.0449	49.68238	17.11500	0.05079
11	12.047	BV	0.0480	39.19170	12.70492	0.04007
12	12.311	VV	0.0730	935.41498	205.72801	0.95630
13	12.509	VV	0.0675	1.32357e4	2552.73633	13.53128
14	12.654	VB	0.0451	423.28613	140.80406	0.43274
15	12.967	BB	0.0424	140.79732	52.27719	0.14394
16	13.186	BV	0.0345	18.90478	8.30878	0.01933
17	13.328	VB	0.0476	2462.44751	807.77228	2.51744
18	13.649	BV	0.0411	5.45182	2.11510	0.00557
19	13.754	VB	0.0520	178.42700	53.31884	0.18241
20	14.224	BB	0.0742	237.78398	43.87346	0.24309
21	14.732	BB	0.1003	1.58922e4	1987.85510	16.24708
22	15.206	BB	0.0423	322.14841	120.14515	0.32934
23	15.373	BB	0.0569	13.27941	3.52846	0.01358
24	15.527	BV	0.0446	100.98754	34.05610	0.10324
25	15.610	VB	0.0431	40.20436	13.75743	0.04110
26	15.923	BB	0.0572	51.27847	13.52025	0.05242
27	16.096	BB	0.0466	10.90299	3.67469	0.01115
28	16.304	BB	0.0494	8.19112	2.55711	0.00837
29	16.494	BV	0.0466	45.36793	14.85280	0.04638
30	16.560	VB	0.0617	81.28182	19.46144	0.08310
31	16.845	BB	0.0498	473.16479	146.00739	0.48373
32	17.305	BV	0.0785	3544.57910	661.26056	3.62373
33	17.458	VB	0.0760	571.53662	123.39874	0.58430
34	18.360	BV	0.0601	838.73724	216.74695	0.85747
35	18.509	VV	0.0564	27.89218	7.16534	0.02852
36	18.667	VV	0.0869	245.64406	47.85047	0.25113
37	19.133	VV	0.1261	3.18121e4	3253.21753	32.52252
38	19.425	VB	0.0417	470.25867	178.82051	0.48076
39	19.692	BV	0.0400	73.52203	28.55985	0.07516
40	19.834	VV	0.0684	139.20558	27.80863	0.14231
41	19.995	VB	0.0646	38.69432	8.42456	0.03956
42	20.177	BB	0.0659	70.35239	15.81802	0.07192
43	20.530	BV	0.0532	12.63836	3.57859	0.01292
44	20.614	VB	0.0429	11.84735	4.20406	0.01211
45	21.017	BB	0.0496	110.98681	34.40600	0.11347
46	21.233	BB	0.0550	17.50525	4.74737	0.01790
47	21.534	BV	0.0747	7119.33105	1303.89026	7.27831
48	21.804	VB	0.0551	2904.88623	768.08765	2.96975
49	22.129	BV	0.0465	23.64146	7.99281	0.02417
50	22.321	VB	0.0590	4880.76855	1116.85669	4.98976
51	22.543	BB	0.0659	55.68148	12.77446	0.05692
52	23.114	BV	0.0540	2523.54565	626.36011	2.57990
53	23.291	VV	0.0494	166.00902	51.72287	0.16972
54	23.439	VB	0.0469	172.55400	57.62605	0.17641
55	24.111	BB	0.0497	16.94646	5.38199	0.01732
56	24.450	BB	0.0750	17.61044	3.01924	0.01800
57	24.950	BB	0.0699	24.97405	5.21043	0.02553
58	25.141	BB	0.0655	15.20149	3.51167	0.01554
59	25.436	BB	0.0489	1035.06421	336.68781	1.05818
60	26.095	BB	0.0479	17.09218	5.26075	0.01747
61	27.190	BB	0.0582	17.32577	4.28407	0.01771

Peak #	RetTime [min]	Type	Width [min]	Area [pA*s]	Height [pA]	Area %
----- ----- ----- ----- ----- ----- -----						
Totals :				9.78157e4	1.72944e4	

=====  
\*\*\* End of Report \*\*\*