

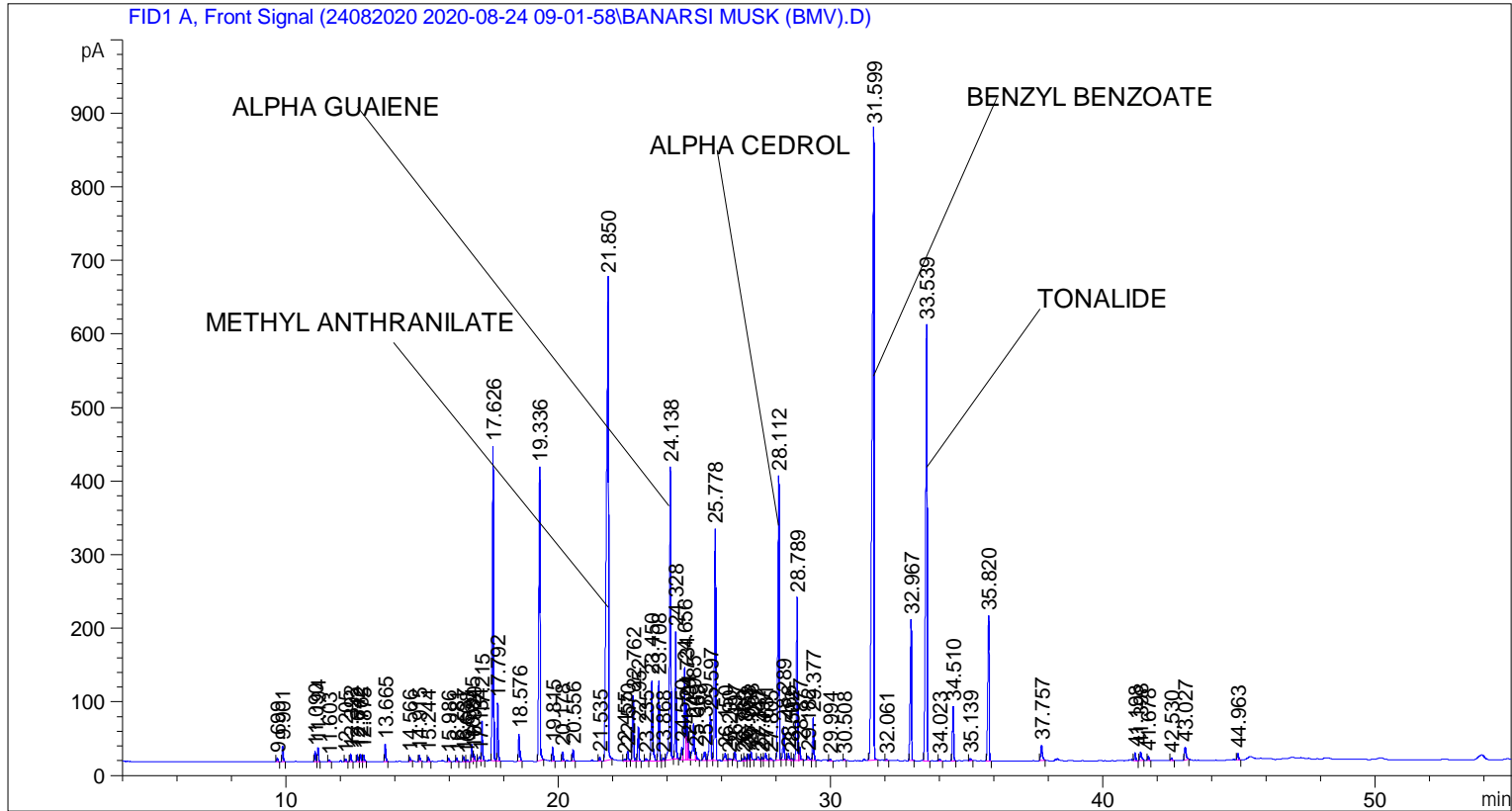
Sample Name: BANARSI MUSK (BMV)

```

=====
Acq. Operator   : SYSTEM                               Seq. Line :    2
Acq. Instrument : BMV_NEW_GC_7820                     Location  : Vial 102
Injection Date  : 24-Aug-20 10:21:27 AM                Inj       :    1
                                                    Inj Volume: 0.5 µl

Acq. Method    : C:\CHEM32\2\DATA\24082020 2020-08-24 09-01-58\UNIVERSAL BMV.M
Last changed   : 24-Aug-20 9:02:07 AM by SYSTEM
Analysis Method: C:\CHEM32\2\DATA\24082020 2020-08-24 09-01-58\UNIVERSAL BMV.M (Sequence
Method)
Last changed   : 24-Aug-20 11:29:57 AM by SYSTEM
                (modified after loading)

Additional Info : Peak(s) manually integrated
    
```



Area Percent Report

```

Sorted By      :      Signal
Multiplier     :      1.0000
Dilution       :      1.0000
Do not use Multiplier & Dilution Factor with ISTDs
    
```

Signal 1: FID1 A, Front Signal

Peak #	RetTime [min]	Type	Width [min]	Area [pA*s]	Height [pA]	Area %
1	9.699	BB	0.0431	13.98798	5.08237	0.05813
2	9.901	BB	0.0436	59.85353	21.42661	0.24873
3	11.090	BV	0.0417	39.78751	14.63551	0.16535
4	11.194	VB	0.0451	55.20246	18.86787	0.22941
5	11.603	BB	0.0454	7.04579	2.38847	0.02928
6	12.205	BB	0.0433	10.44445	3.77657	0.04340

Sample Name: BANARSI MUSK (BMV)

Peak #	RetTime [min]	Type	Width [min]	Area [pA*s]	Height [pA]	Area %
7	12.392	BB	0.0435	30.03366	10.78083	0.12481
8	12.642	BV	0.0436	26.27008	9.39295	0.10917
9	12.762	VV	0.0547	32.75153	9.63228	0.13611
10	12.875	VB	0.0464	28.01052	9.22306	0.11640
11	13.665	BB	0.0445	68.83739	24.00750	0.28607
12	14.566	BB	0.0420	13.22123	5.13769	0.05494
13	14.915	BB	0.0502	26.93148	8.23331	0.11192
14	15.244	BB	0.0478	17.81877	5.80643	0.07405
15	15.986	BB	0.0464	15.61090	5.13864	0.06487
16	16.281	BB	0.0448	14.91356	5.14009	0.06198
17	16.537	BB	0.0442	18.97355	6.65993	0.07885
18	16.668	BB	0.0461	8.45982	2.81084	0.03516
19	16.845	BV	0.0433	65.22168	22.87938	0.27104
20	16.920	VB	0.0484	31.84161	9.93351	0.13233
21	17.134	BV	0.0608	26.91817	6.18619	0.11186
22	17.215	VB	0.0460	162.54335	54.16170	0.67549
23	17.626	BB	0.0531	1394.42957	427.15671	5.79487
24	17.792	BB	0.0441	224.39091	79.09511	0.93251
25	18.576	BB	0.0512	125.44725	37.31206	0.52132
26	19.336	BB	0.0493	1308.29285	398.75290	5.43691
27	19.815	BB	0.0449	51.84837	18.40127	0.21547
28	20.178	BB	0.0454	38.15815	12.94178	0.15857
29	20.556	BB	0.0454	46.30704	15.72680	0.19244
30	21.535	BB	0.0446	17.43167	5.87637	0.07244
31	21.850	BB	0.0690	3308.58301	654.34888	13.74957
32	22.455	BV	0.0541	8.47891	2.46408	0.03524
33	22.570	VB	0.0507	44.16927	13.30719	0.18356
34	22.762	BB	0.0494	285.40048	89.02219	1.18605
35	22.952	BB	0.0491	143.43231	46.34005	0.59607
36	23.235	BB	0.0594	14.77623	3.63802	0.06141
37	23.450	BB	0.0546	408.56943	109.24130	1.69790
38	23.708	BB	0.0474	330.21347	108.86375	1.37228
39	23.868	BV	0.0529	13.71395	4.11804	0.05699
40	24.138	VB	0.0523	1372.95544	397.17383	5.70563
41	24.328	BB	0.0482	535.09778	172.61635	2.22372
42	24.550	BV	0.0463	52.22646	17.27367	0.21704
43	24.656	VV	0.0488	405.83841	125.27637	1.68655
44	24.734	VV	0.0493	239.86098	75.02372	0.99680
45	24.791	VV	0.0360	58.03157	25.05183	0.24116
46	24.985	VV	0.0668	221.11453	49.76696	0.91889
47	25.069	VB	0.0529	39.40714	10.97949	0.16377
48	25.389	BV	0.0641	52.19159	12.39906	0.21689
49	25.597	VV	0.0607	249.50891	61.01095	1.03689
50	25.778	VB	0.0477	988.52118	314.24829	4.10803
51	26.150	BV	0.0690	46.38537	9.84591	0.19276
52	26.290	VB	0.0577	11.01177	2.69318	0.04576
53	26.497	BB	0.0498	37.99900	12.05834	0.15791
54	26.789	BV	0.0468	8.54579	2.78234	0.03551
55	26.863	VV	0.0515	18.24609	5.38947	0.07583
56	26.988	VV	0.0437	27.98024	9.67478	0.11628
57	27.088	VB	0.0475	34.65412	11.37792	0.14401
58	27.347	BV	0.0638	22.62265	5.09274	0.09401
59	27.497	VV	0.0493	14.11510	4.41971	0.05866
60	27.631	VB	0.0661	44.51386	9.78399	0.18499

Sample Name: BANARSI MUSK (BMV)

Peak #	RetTime [min]	Type	Width [min]	Area [pA*s]	Height [pA]	Area %
61	27.805	BB	0.0647	15.28558	3.51463	0.06352
62	28.112	BV	0.0530	1324.61365	386.31158	5.50473
63	28.289	VB	0.0496	147.62195	45.74851	0.61348
64	28.466	BV	0.0560	30.71576	8.32659	0.12765
65	28.592	VV	0.0491	8.45883	2.73255	0.03515
66	28.789	VV	0.0522	743.64471	221.06142	3.09039
67	28.877	VB	0.0500	59.50425	18.77649	0.24728
68	29.182	BB	0.0677	24.78320	5.10032	0.10299
69	29.377	BB	0.0489	184.20050	58.29896	0.76549
70	29.994	BB	0.0520	9.17166	2.74521	0.03811
71	30.508	BB	0.0456	6.43201	2.23244	0.02673
72	31.599	BB	0.0694	4365.87354	857.67023	18.14338
73	32.061	BB	0.0456	5.66958	1.97057	0.02356
74	32.967	BB	0.0485	647.61700	191.30750	2.69132
75	33.539	BB	0.0567	2217.63818	592.68390	9.21590
76	34.023	BB	0.0576	8.77798	2.40345	0.03648
77	34.510	BB	0.0476	232.32321	74.00040	0.96547
78	35.139	BB	0.0559	11.56755	3.00776	0.04807
79	35.820	BB	0.0511	694.17883	197.00153	2.88482
80	37.757	BB	0.0591	86.20808	20.92779	0.35826
81	41.198	BB	0.0537	35.06339	10.30900	0.14571
82	41.398	BB	0.0617	48.76033	11.92352	0.20263
83	41.678	BB	0.0482	18.39529	5.62164	0.07645
84	42.530	BB	0.0509	11.23491	3.45468	0.04669
85	43.027	BB	0.0646	76.21864	17.58764	0.31674
86	44.963	BB	0.0552	30.06239	8.71493	0.12493

Totals : 2.40632e4 6375.28038

=====
*** End of Report ***