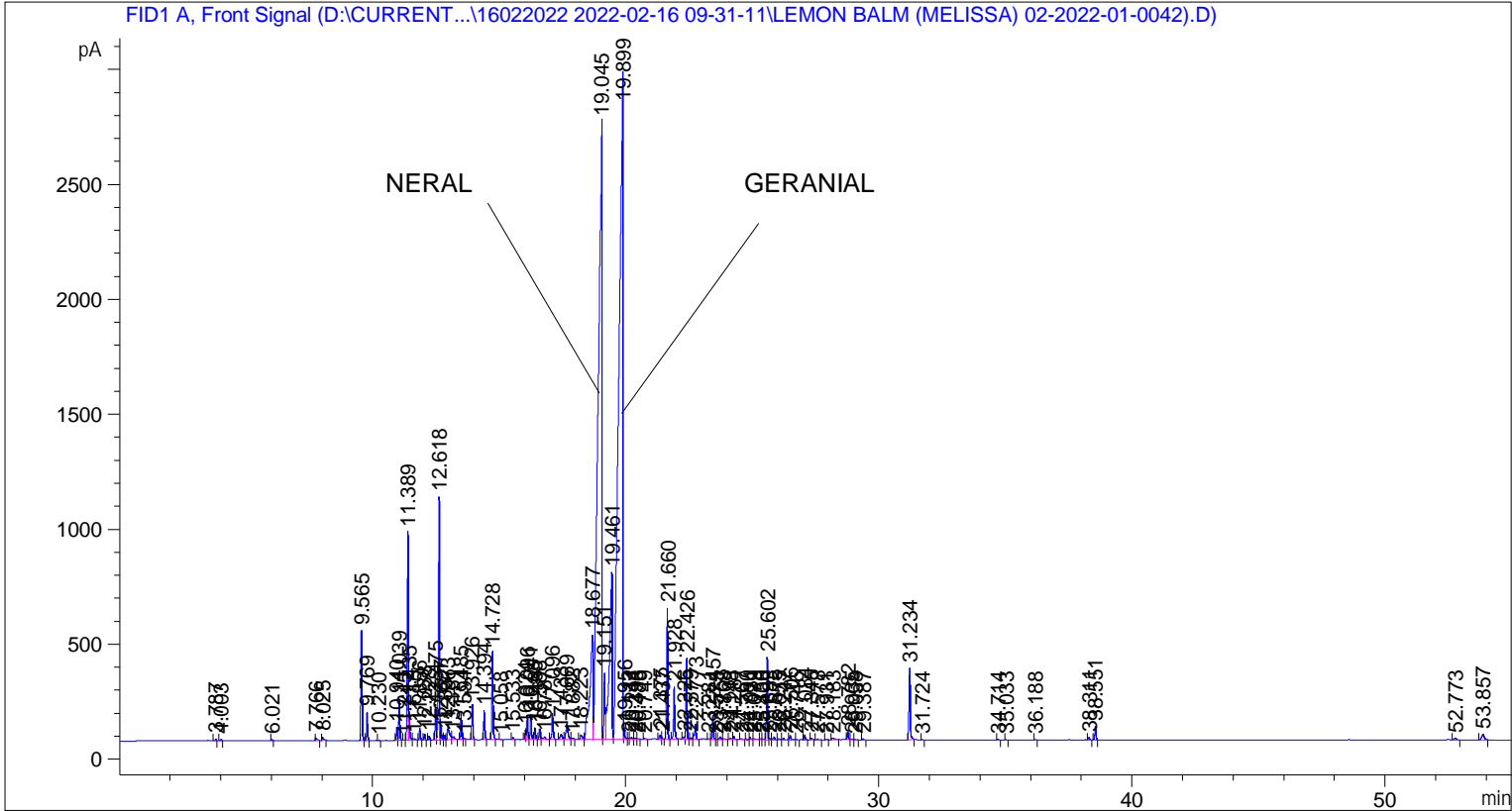


```

=====
Acq. Operator   : SYSTEM                               Seq. Line :    4
Acq. Instrument : BMV_NEW_GC_7820                     Location  : Vial 104
Injection Date  : 16-Feb-22 12:58:35 PM                Inj       :    1
                                                    Inj Volume: 0.5 µl

Acq. Method     : D:\CURRENT DATA\DATA\16022022 2022-02-16 09-31-11\UNIVERSAL BMV.M
Last changed    : 16-Feb-22 9:31:22 AM by SYSTEM
Analysis Method : C:\CHEM32\2\METHODS\COOLING.M
Last changed    : 03-Mar-22 2:15:55 PM by SYSTEM
                (modified after loading)
  
```



=====
 Area Percent Report
 =====

```

Sorted By      : Signal
Multiplier     : 1.0000
Dilution       : 1.0000
Do not use Multiplier & Dilution Factor with ISTDs
  
```

Signal 1: FID1 A, Front Signal

Peak #	RetTime [min]	Type	Width [min]	Area [pA*s]	Height [pA]	Area %
1	3.787	BB	0.0318	19.68048	8.91259	0.02079
2	4.003	BB	0.0357	17.12681	6.95727	0.01810
3	6.021	BB	0.0420	12.90612	4.56722	0.01364
4	7.766	BB	0.0543	51.32449	12.92800	0.05423
5	8.025	BB	0.0536	59.80818	15.63704	0.06319
6	9.565	BB	0.0420	1274.06726	478.76642	1.34620
7	9.769	BB	0.0415	333.60516	123.41520	0.35249
8	10.230	BB	0.0433	6.13142	2.28669	0.00648

Peak #	RetTime [min]	Type	Width [min]	Area [pA*s]	Height [pA]	Area %
9	10.940	BV	0.0403	149.27698	57.42696	0.15773
10	11.039	VB	0.0441	509.95059	179.73558	0.53882
11	11.245	BV	0.0438	5.72142	2.10133	0.00605
12	11.389	VV	0.0504	3134.97217	904.50647	3.31247
13	11.435	VB	0.0361	279.42239	116.16132	0.29524
14	11.615	BB	0.0854	37.98519	6.38789	0.04014
15	11.856	BB	0.0432	147.19089	51.80074	0.15552
16	12.038	BB	0.0432	74.22072	26.90398	0.07842
17	12.228	BB	0.0431	47.53397	17.25427	0.05023
18	12.475	BV	0.0462	396.47397	135.27765	0.41892
19	12.618	VV	0.0515	3398.96094	1058.23572	3.59141
20	12.697	VV	0.0408	142.37369	53.96500	0.15043
21	12.837	VV	0.0418	58.35372	22.09108	0.06166
22	12.963	VV	0.0772	339.96027	61.76675	0.35921
23	13.151	VB	0.0791	74.52720	12.22874	0.07875
24	13.485	BV	0.0426	302.99603	111.93169	0.32015
25	13.594	VB	0.0510	21.87747	5.93203	0.02312
26	13.926	BB	0.0462	447.30481	152.45235	0.47263
27	14.394	BB	0.0455	377.31958	127.64661	0.39868
28	14.728	BB	0.0496	1197.33667	382.05762	1.26513
29	15.058	BB	0.0454	5.32751	1.97811	0.00563
30	15.533	BB	0.0492	28.11197	8.35671	0.02970
31	16.024	BV	0.0424	113.32879	42.15016	0.11975
32	16.096	VV	0.0487	336.13235	106.98811	0.35516
33	16.241	VV	0.0477	347.46469	110.42839	0.36714
34	16.405	VB	0.0495	154.05708	49.27936	0.16278
35	16.588	BV	0.0495	149.03265	46.35887	0.15747
36	16.787	VB	0.0851	72.68850	11.75476	0.07680
37	17.096	BB	0.0531	413.45508	114.59193	0.43686
38	17.433	BV	0.0914	135.89366	21.03273	0.14359
39	17.669	VB	0.0745	376.93835	70.37715	0.39828
40	17.882	BB	0.0702	27.12090	5.34606	0.02866
41	18.223	BV	0.0785	107.07104	19.66480	0.11313
42	18.677	VV	0.1126	4037.40991	454.44543	4.26601
43	19.045	VV	0.1268	2.80736e4	2689.19751	29.66313
44	19.151	VV	0.0523	999.60431	289.55344	1.05620
45	19.461	VV	0.0947	5475.66309	728.54865	5.78569
46	19.899	VV	0.1379	3.25799e4	2904.58984	34.42453
47	19.956	VB	0.0394	140.61327	52.28453	0.14857
48	20.112	BV	0.0506	17.61972	5.18461	0.01862
49	20.241	VV	0.0840	45.04704	7.00983	0.04760
50	20.398	VV	0.0663	26.99174	5.69093	0.02852
51	20.486	VB	0.0594	10.86038	2.67324	0.01148
52	20.749	BB	0.0731	21.74523	4.08546	0.02298
53	21.375	BV	0.0659	82.78879	20.60981	0.08748
54	21.437	VB	0.0540	27.58470	7.31244	0.02915
55	21.660	BB	0.0501	1907.13501	569.05573	2.01512
56	21.928	BB	0.0523	785.58875	227.60677	0.83007
57	22.326	BV	0.0577	38.20435	9.54496	0.04037
58	22.426	VB	0.0442	1030.95911	351.66562	1.08933
59	22.579	BV	0.0462	18.47544	6.30834	0.01952
60	22.773	VB	0.0566	260.70993	66.75379	0.27547
61	23.281	BV	0.0483	11.20140	3.23893	0.01184
62	23.457	VB	0.0481	325.59454	105.35973	0.34403

Peak #	RetTime [min]	Type	Width [min]	Area [pA*s]	Height [pA]	Area %
63	23.575	BV	0.0405	3.72931	1.58166	0.00394
64	23.753	VV	0.0525	43.37635	12.48860	0.04583
65	23.868	VB	0.0621	21.61858	4.93127	0.02284
66	24.148	BV	0.0698	26.03172	4.99496	0.02751
67	24.281	VB	0.0508	48.79045	14.66987	0.05155
68	24.567	BB	0.0675	16.28836	3.91492	0.01721
69	24.780	BB	0.0365	6.36411	2.91462	0.00672
70	24.931	BV	0.0536	29.33050	8.42242	0.03099
71	25.079	VB	0.0761	27.00250	5.07628	0.02853
72	25.330	BV	0.0569	15.75926	3.92307	0.01665
73	25.405	VB	0.0537	11.64809	3.10704	0.01231
74	25.602	BV	0.0486	1131.16528	360.69839	1.19521
75	25.683	VV	0.0480	21.16107	6.68006	0.02236
76	25.875	VV	0.0674	54.94516	11.57612	0.05806
77	26.055	VV	0.0752	28.90281	5.42255	0.03054
78	26.247	VB	0.0638	32.98133	7.29145	0.03485
79	26.506	BB	0.0630	76.16833	17.78311	0.08048
80	26.746	BB	0.0540	11.73396	3.26241	0.01240
81	27.084	BB	0.0533	73.18427	21.20588	0.07733
82	27.345	BB	0.0501	27.34295	8.38122	0.02889
83	27.578	BB	0.0687	17.15702	3.79667	0.01813
84	27.931	BB	0.0519	8.78202	2.44306	0.00928
85	28.183	BB	0.0939	62.59607	8.91707	0.06614
86	28.782	BV	0.0459	104.57657	34.94019	0.11050
87	28.935	VV	0.0713	17.49876	3.38370	0.01849
88	29.058	VB	0.0496	8.88735	2.68904	0.00939
89	29.387	BB	0.0494	13.38620	4.17465	0.01414
90	31.234	BB	0.0535	1116.52185	313.80783	1.17974
91	31.724	BB	0.0445	6.44817	2.17914	0.00681
92	34.714	BB	0.0509	10.60707	3.26627	0.01121
93	35.033	BB	0.0500	8.16263	2.50511	0.00862
94	36.188	BB	0.0512	8.13012	2.42043	0.00859
95	38.311	BB	0.0525	35.94666	10.90283	0.03798
96	38.551	BB	0.0525	201.27702	59.41685	0.21267
97	52.773	BB	0.0806	46.42875	7.46447	0.04906
98	53.857	BB	0.0973	165.20679	23.14703	0.17456

Totals : 9.46415e4 1.42521e4

=====
 *** End of Report ***