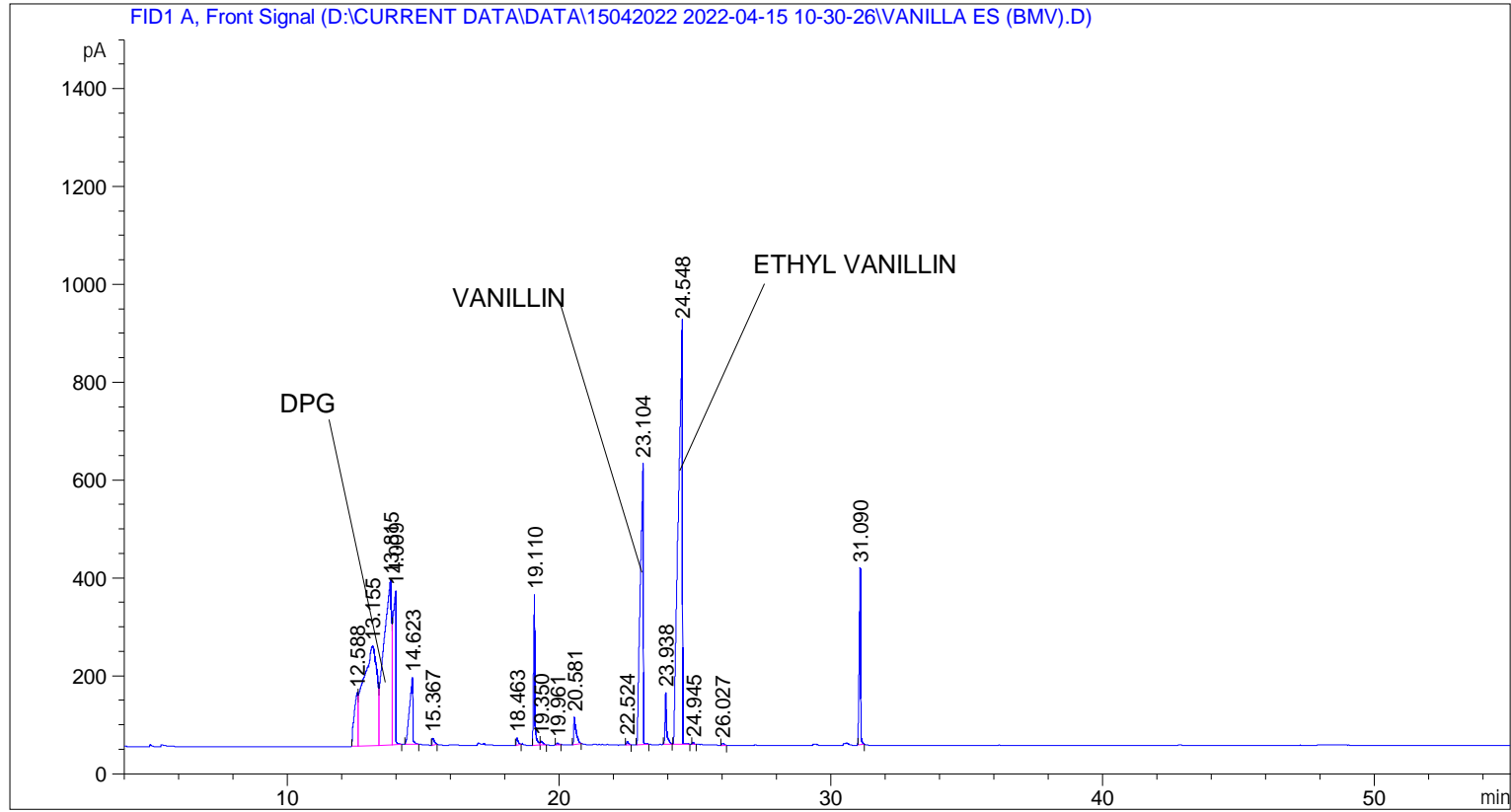


```

=====
Acq. Operator   : SYSTEM                               Seq. Line :    2
Acq. Instrument : BMV_NEW_GC_7820                     Location  : Vial 102
Injection Date  : 15-Apr-22 11:47:30 AM                Inj       :    1
                                                    Inj Volume: 0.5 µl

Acq. Method     : D:\CURRENT DATA\DATA\15042022 2022-04-15 10-30-26\UNIVERSAL BMV.M
Last changed    : 15-Apr-22 10:30:37 AM by SYSTEM
Analysis Method : C:\CHEM32\2\METHODS\COOLING.M
Last changed    : 15-Apr-22 3:02:22 PM by SYSTEM
                  (modified after loading)

Additional Info  : Peak(s) manually integrated
  
```



=====
 Area Percent Report
 =====

```

Sorted By      :      Signal
Multiplier     :      1.0000
Dilution       :      1.0000
Do not use Multiplier & Dilution Factor with ISTDs
  
```

Signal 1: FID1 A, Front Signal

Peak #	RetTime [min]	Type	Width [min]	Area [pA*s]	Height [pA]	Area %
1	12.588	BV	0.1136	988.25616	109.15216	2.81145
2	13.155	VV	0.4093	7121.94092	203.97597	20.26089
3	13.815	VV	0.2420	6751.03125	336.59976	19.20570
4	14.009	VB	0.0987	2492.85010	313.73383	7.09180
5	14.623	BB	0.1024	1136.03625	137.42706	3.23186
6	15.367	BB	0.0696	76.76246	15.03363	0.21838
7	18.463	BB	0.0637	69.04286	15.57168	0.19642

Sample Name: VANILLA ES (BMV)

Peak #	RetTime [min]	Type	Width [min]	Area [pA*s]	Height [pA]	Area %
8	19.110	BB	0.0480	1083.25500	308.22281	3.08170
9	19.350	BB	0.0929	57.75573	8.22614	0.16431
10	19.961	BB	0.0669	19.84885	4.07144	0.05647
11	20.581	BB	0.0835	340.12811	56.32022	0.96762
12	22.524	BB	0.0703	34.61028	7.29581	0.09846
13	23.104	BB	0.0954	4359.14648	575.08051	12.40114
14	23.938	BB	0.0600	424.08698	105.33962	1.20647
15	24.548	BB	0.1312	8842.51563	858.44000	25.15567
16	24.945	BB	0.0567	16.80634	4.59685	0.04781
17	26.027	BB	0.0717	21.99831	4.15842	0.06258
18	31.090	BB	0.0514	1315.10522	361.76978	3.74128

Totals : 3.51512e4 3425.01568

=====
*** End of Report ***