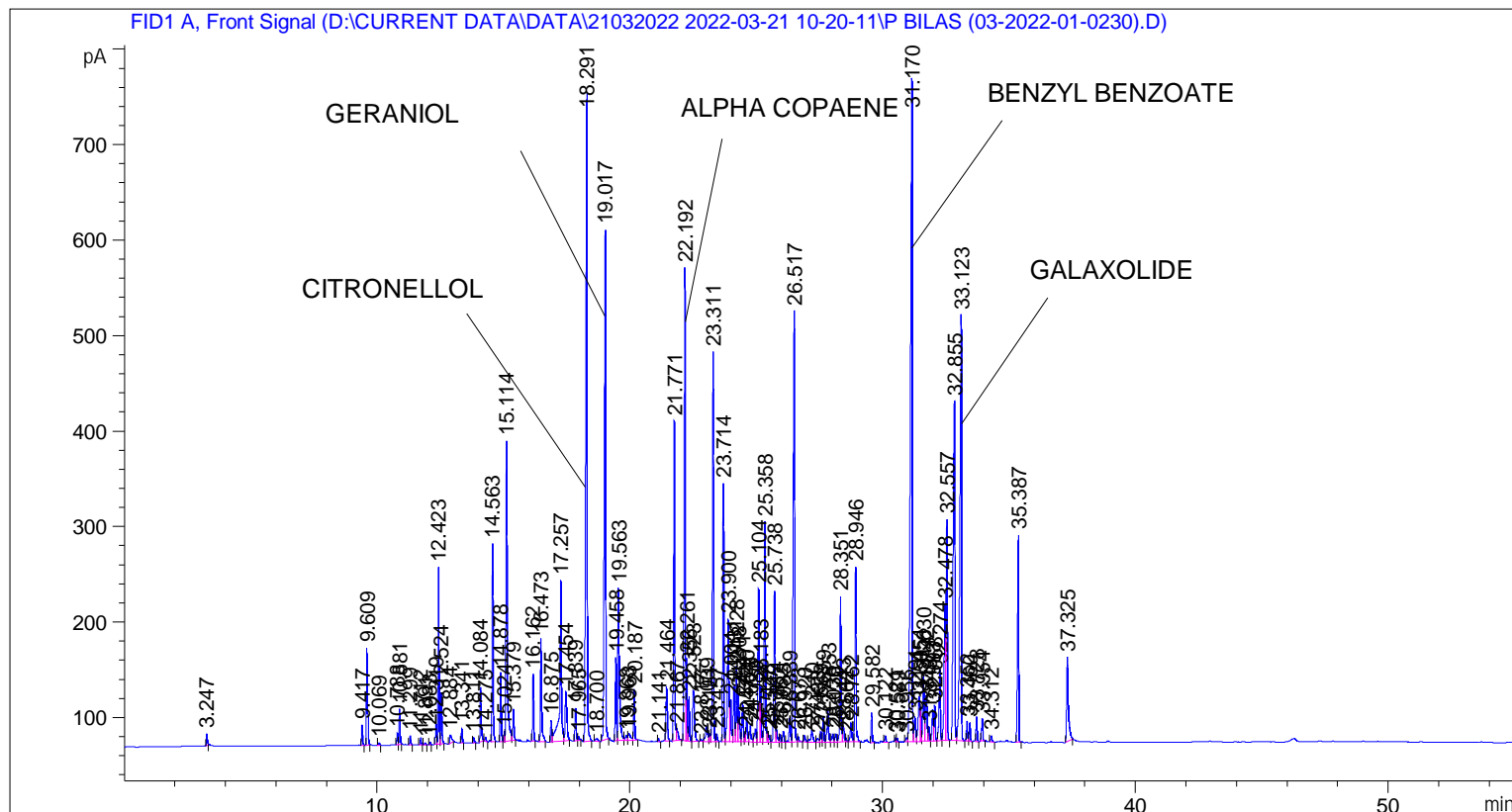


```

=====
Acq. Operator   : SYSTEM                               Seq. Line :    3
Acq. Instrument : BMV_NEW_GC_7820                     Location  : Vial 103
Injection Date  : 21-Mar-22 12:43:34 PM                Inj       :    1
                                                    Inj Volume: 0.5 µl

Acq. Method    : D:\CURRENT DATA\DATA\21032022 2022-03-21 10-20-11\UNIVERSAL BMV.M
Last changed   : 21-Mar-22 10:20:22 AM by SYSTEM
Analysis Method: C:\CHEM32\2\METHODS\COOLING.M
Last changed   : 28-Mar-22 4:19:10 PM by SYSTEM
                (modified after loading)
  
```



=====
 Area Percent Report
 =====

```

Sorted By      : Signal
Multiplier     : 1.0000
Dilution      : 1.0000
Do not use Multiplier & Dilution Factor with ISTDs
  
```

Signal 1: FID1 A, Front Signal

Peak #	RetTime [min]	Type	Width [min]	Area [pA*s]	Height [pA]	Area %
1	3.247	BB	0.0364	29.87152	11.87281	0.08213
2	9.417	BB	0.0412	56.82975	21.28242	0.15624
3	9.609	BB	0.0436	283.38055	101.52357	0.77911
4	10.069	BB	0.0472	7.98360	2.56995	0.02195
5	10.788	BV	0.0414	32.01523	12.28600	0.08802
6	10.881	VB	0.0446	106.94083	37.14362	0.29402
7	11.299	BB	0.0445	26.84710	9.34825	0.07381
8	11.712	BB	0.0446	22.08476	7.66665	0.06072

Peak #	RetTime [min]	Type	Width [min]	Area [pA*s]	Height [pA]	Area %
9	11.891	BB	0.0455	5.13771	1.84292	0.01413
10	12.083	BB	0.0414	8.71742	3.14108	0.02397
11	12.319	BV	0.0418	55.06107	20.82644	0.15138
12	12.423	VV	0.0435	515.34680	185.27338	1.41686
13	12.524	VB	0.0456	163.67819	53.57676	0.45000
14	12.884	BB	0.0698	48.83334	9.21771	0.13426
15	13.341	BB	0.0441	44.73615	15.74999	0.12299
16	13.811	BB	0.0469	18.59515	6.03714	0.05112
17	14.084	BB	0.0465	180.09853	57.56937	0.49515
18	14.275	BB	0.0446	11.63294	4.15761	0.03198
19	14.563	BB	0.0441	588.54340	207.16988	1.61810
20	14.878	BB	0.0448	204.39305	72.59985	0.56194
21	15.024	BV	0.0380	25.33012	10.56440	0.06964
22	15.114	VV	0.0575	1147.93433	314.79926	3.15605
23	15.379	VB	0.0473	101.27811	32.52164	0.27845
24	16.162	BB	0.0440	198.84334	70.30746	0.54669
25	16.473	BB	0.0498	348.11841	107.49842	0.95709
26	16.875	BV	0.0499	79.17632	23.12465	0.21768
27	17.257	VV	0.0661	807.54443	167.88010	2.22020
28	17.454	VB	0.0665	241.87260	51.81783	0.66499
29	17.839	BV	0.0512	111.48105	34.00944	0.30650
30	17.965	VB	0.0565	16.78635	4.12633	0.04615
31	18.291	BB	0.0573	2700.70703	680.48145	7.42513
32	18.700	BB	0.0736	16.86661	3.19291	0.04637
33	19.017	BB	0.0537	2004.04089	534.51703	5.50976
34	19.458	BV	0.0460	261.59921	87.19614	0.71922
35	19.563	VB	0.0638	684.05530	160.17134	1.88069
36	19.868	BV	0.0666	25.05758	5.26261	0.06889
37	19.963	VV	0.0969	53.12390	6.97514	0.14605
38	20.187	VB	0.0450	155.94386	53.56034	0.42874
39	21.141	BB	0.0427	8.54111	3.24960	0.02348
40	21.464	BB	0.0595	226.80832	56.88168	0.62357
41	21.771	BV	0.0467	1024.90845	334.89694	2.81781
42	21.867	VB	0.0723	71.03191	12.87866	0.19529
43	22.192	BV	0.0510	1612.01611	494.98898	4.43196
44	22.261	VV	0.0428	236.29718	86.65605	0.64966
45	22.356	VV	0.0493	144.90570	46.53768	0.39839
46	22.523	VB	0.0719	287.40451	53.27474	0.79017
47	22.817	BB	0.0478	7.73342	2.52171	0.02126
48	23.039	BV	0.0764	92.82309	16.55514	0.25520
49	23.151	VV	0.0582	34.35933	8.32110	0.09447
50	23.311	VV	0.0499	1325.71167	407.90295	3.64481
51	23.457	VB	0.0483	25.90313	8.09554	0.07122
52	23.714	BV	0.0492	840.59644	270.54913	2.31107
53	23.900	VV	0.0599	516.50873	128.41728	1.42005
54	24.004	VV	0.0546	176.10680	44.05268	0.48418
55	24.131	VV	0.0510	193.38666	57.80226	0.53168
56	24.228	VV	0.0499	255.68555	78.72868	0.70296
57	24.308	VV	0.0581	204.53459	50.65786	0.56233
58	24.471	VV	0.0511	139.66443	41.68153	0.38398
59	24.572	VV	0.0405	26.64493	9.56769	0.07326
60	24.640	VV	0.0551	93.70992	25.38169	0.25764
61	24.778	VB	0.0665	79.35560	16.99205	0.21817
62	24.980	BV	0.0698	64.16791	13.65466	0.17642

Peak #	RetTime [min]	Type	Width [min]	Area [pA*s]	Height [pA]	Area %
63	25.104	VV	0.0507	547.53503	160.89722	1.50535
64	25.183	VV	0.0537	213.36369	58.35494	0.58661
65	25.358	VV	0.0494	740.68945	230.98096	2.03640
66	25.448	VV	0.0491	36.59870	10.92975	0.10062
67	25.527	VV	0.0549	25.97866	7.40158	0.07142
68	25.738	VV	0.0528	541.53772	158.73227	1.48886
69	25.814	VV	0.0537	52.27203	13.34508	0.14371
70	25.962	VV	0.0529	28.16978	8.22941	0.07745
71	26.085	VV	0.0521	38.63668	11.51864	0.10622
72	26.339	VV	0.0580	95.91309	25.40601	0.26370
73	26.517	VV	0.0539	1774.47058	451.46475	4.87860
74	26.673	VB	0.0531	19.34264	5.76570	0.05318
75	26.920	BV	0.0602	28.73177	6.95140	0.07899
76	27.210	VV	0.0841	78.25616	12.49207	0.21515
77	27.433	VV	0.0737	22.30580	3.84573	0.06133
78	27.559	VV	0.0498	35.23849	11.15665	0.09688
79	27.659	VV	0.0510	88.59711	25.81842	0.24358
80	27.853	VV	0.0637	144.11105	33.15365	0.39621
81	28.036	VV	0.0645	38.15317	8.64583	0.10490
82	28.170	VV	0.0614	37.26131	8.46245	0.10244
83	28.351	VV	0.0517	505.21542	152.18600	1.38900
84	28.443	VV	0.0683	84.11387	16.82899	0.23126
85	28.562	VV	0.0464	13.42295	4.29916	0.03690
86	28.762	VV	0.0610	83.53759	20.29615	0.22967
87	28.946	VB	0.0501	597.83301	183.13545	1.64364
88	29.582	BB	0.0464	95.45145	31.47148	0.26243
89	30.122	BB	0.0579	26.38300	6.71285	0.07254
90	30.521	BV	0.0447	11.91296	4.00087	0.03275
91	30.589	VB	0.0453	11.47699	3.79012	0.03155
92	30.956	BV	0.0565	14.96087	4.00923	0.04113
93	31.170	VV	0.0693	3211.81079	689.76709	8.83032
94	31.291	VV	0.0694	118.09904	26.29689	0.32469
95	31.454	VV	0.0597	192.54483	47.05809	0.52937
96	31.505	VV	0.0432	103.25067	36.25477	0.28387
97	31.630	VV	0.0610	271.42099	68.89511	0.74623
98	31.742	VV	0.0719	246.06050	47.92976	0.67650
99	31.843	VV	0.0495	49.73768	15.48520	0.13675
100	31.993	VV	0.0519	112.32223	32.82875	0.30881
101	32.068	VB	0.0515	125.07983	37.91221	0.34389
102	32.274	BV	0.0551	274.97488	74.38163	0.75600
103	32.478	VV	0.0545	521.13080	142.95518	1.43276
104	32.557	VB	0.0491	816.02179	231.70216	2.24351
105	32.855	BV	0.0772	1742.38904	355.25595	4.79040
106	33.123	VB	0.0604	2001.18640	445.50369	5.50192
107	33.352	BV	0.0513	66.63985	20.82431	0.18321
108	33.460	VB	0.0518	65.09491	19.54836	0.17897
109	33.728	BB	0.0499	81.49975	25.75677	0.22407
110	33.954	BB	0.0530	76.10660	22.78482	0.20924
111	34.312	BB	0.0589	23.70788	6.15484	0.06518
112	35.387	BB	0.0497	738.12488	216.98309	2.02935
113	37.325	BB	0.0703	424.57251	87.99426	1.16729

Totals : 3.63725e4 9791.66392

=====

*** End of Report ***