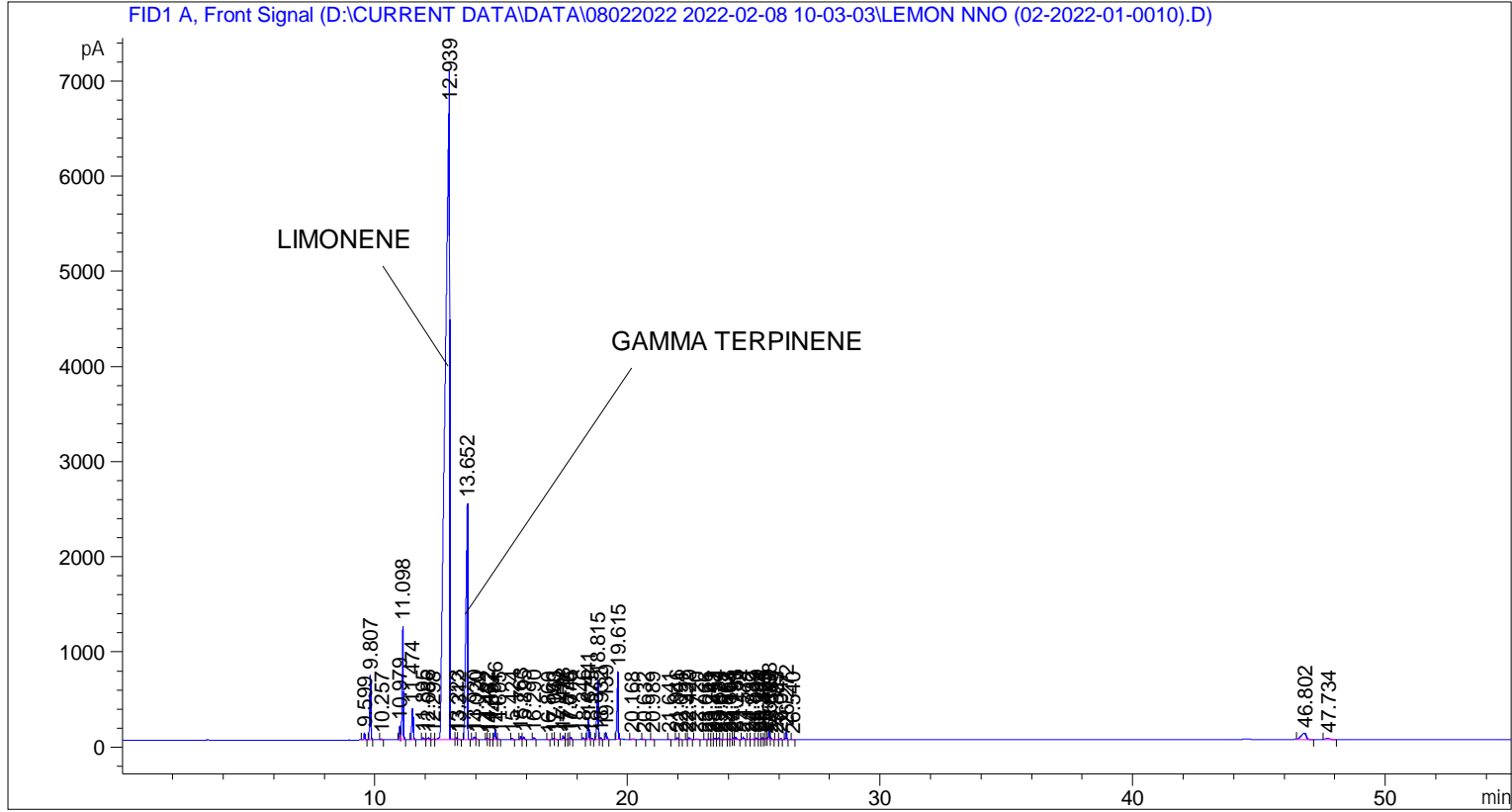


```

=====
Acq. Operator   : SYSTEM                               Seq. Line :    3
Acq. Instrument : BMV_NEW_GC_7820                     Location  : Vial 103
Injection Date  : 08-Feb-22 12:24:04 PM              Inj       :    1
                                                    Inj Volume: 0.5 µl

Acq. Method     : D:\CURRENT DATA\DATA\08022022 2022-02-08 10-03-03\UNIVERSAL BMV.M
Last changed    : 08-Feb-22 10:03:13 AM by SYSTEM
Analysis Method : C:\CHEM32\2\METHODS\COOLING.M
Last changed    : 03-Mar-22 1:20:06 PM by SYSTEM
                  (modified after loading)

Additional Info : Peak(s) manually integrated
  
```



=====
 Area Percent Report
 =====

```

Sorted By      :      Signal
Multiplier     :      1.0000
Dilution       :      1.0000
Do not use Multiplier & Dilution Factor with ISTDs
  
```

Signal 1: FID1 A, Front Signal

Peak #	RetTime [min]	Type	Width [min]	Area [pA*s]	Height [pA]	Area %
1	9.599	BB	0.0448	215.90166	74.53931	0.19613
2	9.807	BB	0.0466	2018.72058	680.33551	1.83381
3	10.257	BB	0.0521	34.03414	9.89304	0.03092
4	10.979	BV	0.0550	509.49017	148.68614	0.46282
5	11.098	VB	0.0516	3940.94507	1190.64526	3.57997
6	11.474	BB	0.0598	1229.17444	327.70255	1.11659
7	11.895	BB	0.0664	98.77829	22.85079	0.08973

Peak #	RetTime [min]	Type	Width [min]	Area [pA*s]	Height [pA]	Area %
8	12.086	BB	0.0711	90.00563	20.15028	0.08176
9	12.298	BV	0.0912	42.50430	6.68114	0.03861
10	12.939	VV	0.1388	8.01820e4	6989.89746	72.83760
11	13.223	VV	0.0473	60.86789	19.02579	0.05529
12	13.312	VB	0.0474	17.80532	5.41478	0.01617
13	13.652	BB	0.0633	1.19479e4	2476.87573	10.85350
14	13.930	BV	0.0665	110.89094	22.88507	0.10073
15	14.020	VB	0.0531	30.56927	8.46371	0.02777
16	14.422	BV	0.0405	30.23987	11.57138	0.02747
17	14.482	VB	0.0458	27.22397	8.88146	0.02473
18	14.597	BV	0.0662	9.10127	1.82566	0.00827
19	14.746	VB	0.0455	320.34351	108.24927	0.29100
20	14.895	BB	0.0528	15.78494	4.40611	0.01434
21	15.424	BB	0.0469	41.06648	13.34090	0.03730
22	15.763	BV	0.0435	107.99208	37.62294	0.09810
23	15.895	VB	0.0564	104.08102	26.74420	0.09455
24	16.290	BB	0.0479	62.78661	19.84812	0.05704
25	16.860	BB	0.0504	7.61458	2.25331	0.00692
26	17.063	BV	0.0449	46.14249	15.85670	0.04192
27	17.140	VB	0.0483	23.62384	7.18958	0.02146
28	17.438	BV	0.0542	141.86510	39.25005	0.12887
29	17.576	VV	0.0484	22.76524	7.10759	0.02068
30	17.676	VV	0.0474	23.84426	7.64749	0.02166
31	17.745	VB	0.0490	74.09823	23.33689	0.06731
32	18.246	BB	0.0466	60.06056	20.24417	0.05456
33	18.441	BV	0.0510	670.85596	211.65207	0.60941
34	18.575	VB	0.0541	52.42179	14.20419	0.04762
35	18.815	BV	0.0511	2131.00830	620.66522	1.93582
36	18.932	VB	0.0491	68.47846	20.98804	0.06221
37	19.139	BB	0.0476	211.77733	67.49072	0.19238
38	19.615	BB	0.0557	2584.79907	705.88342	2.34804
39	20.168	BB	0.0940	32.65439	4.64780	0.02966
40	20.632	BB	0.0515	19.85700	6.01475	0.01804
41	20.989	BB	0.0518	15.71945	4.61193	0.01428
42	21.641	BB	0.0573	13.28429	3.34828	0.01207
43	21.946	BB	0.0491	57.03229	17.45328	0.05181
44	22.094	BB	0.0549	12.24329	3.25371	0.01112
45	22.332	BV	0.0438	5.71053	2.09825	0.00519
46	22.429	VB	0.0633	90.67223	20.62514	0.08237
47	22.720	BB	0.0720	43.14186	8.67750	0.03919
48	23.066	BB	0.0372	5.39982	2.40028	0.00491
49	23.241	BV	0.0407	16.01536	6.29804	0.01455
50	23.343	VV	0.0536	12.82441	3.98317	0.01165
51	23.457	VV	0.0454	44.33879	15.02587	0.04028
52	23.584	VV	0.0493	54.44384	17.03200	0.04946
53	23.679	VB	0.0492	13.98013	4.27080	0.01270
54	23.867	BV	0.0721	16.57421	3.78717	0.01506
55	24.008	VV	0.0494	25.95902	8.09628	0.02358
56	24.114	VV	0.0517	13.58136	3.99554	0.01234
57	24.198	VV	0.0471	63.86097	21.22619	0.05801
58	24.283	VB	0.0537	85.24266	23.86562	0.07743
59	24.574	BB	0.0560	84.14813	22.85220	0.07644
60	24.792	BV	0.0526	15.35907	4.63925	0.01395
61	24.939	VV	0.0733	18.68120	3.49558	0.01697

Peak #	RetTime [min]	Type	Width [min]	Area [pA*s]	Height [pA]	Area %
62	25.099	VV	0.0559	59.43766	16.18182	0.05399
63	25.234	VV	0.0482	28.87340	9.05608	0.02623
64	25.336	VV	0.0467	62.96850	21.14085	0.05720
65	25.425	VV	0.0389	10.78556	4.20975	0.00980
66	25.493	VV	0.0468	50.22105	16.83826	0.04562
67	25.598	VV	0.0498	322.87241	99.69267	0.29330
68	25.685	VB	0.0465	46.33894	15.68945	0.04209
69	25.885	BB	0.0413	6.23732	2.57203	0.00567
70	26.047	BB	0.0481	41.21947	13.32586	0.03744
71	26.272	BB	0.0474	239.54225	78.89566	0.21760
72	26.540	BB	0.0545	8.35060	2.34639	0.00759
73	46.802	BB	0.1667	946.57050	67.87289	0.85987
74	47.734	BB	0.1668	131.56096	9.78643	0.11951

Totals : 1.10083e5 1.45696e4

=====
*** End of Report ***