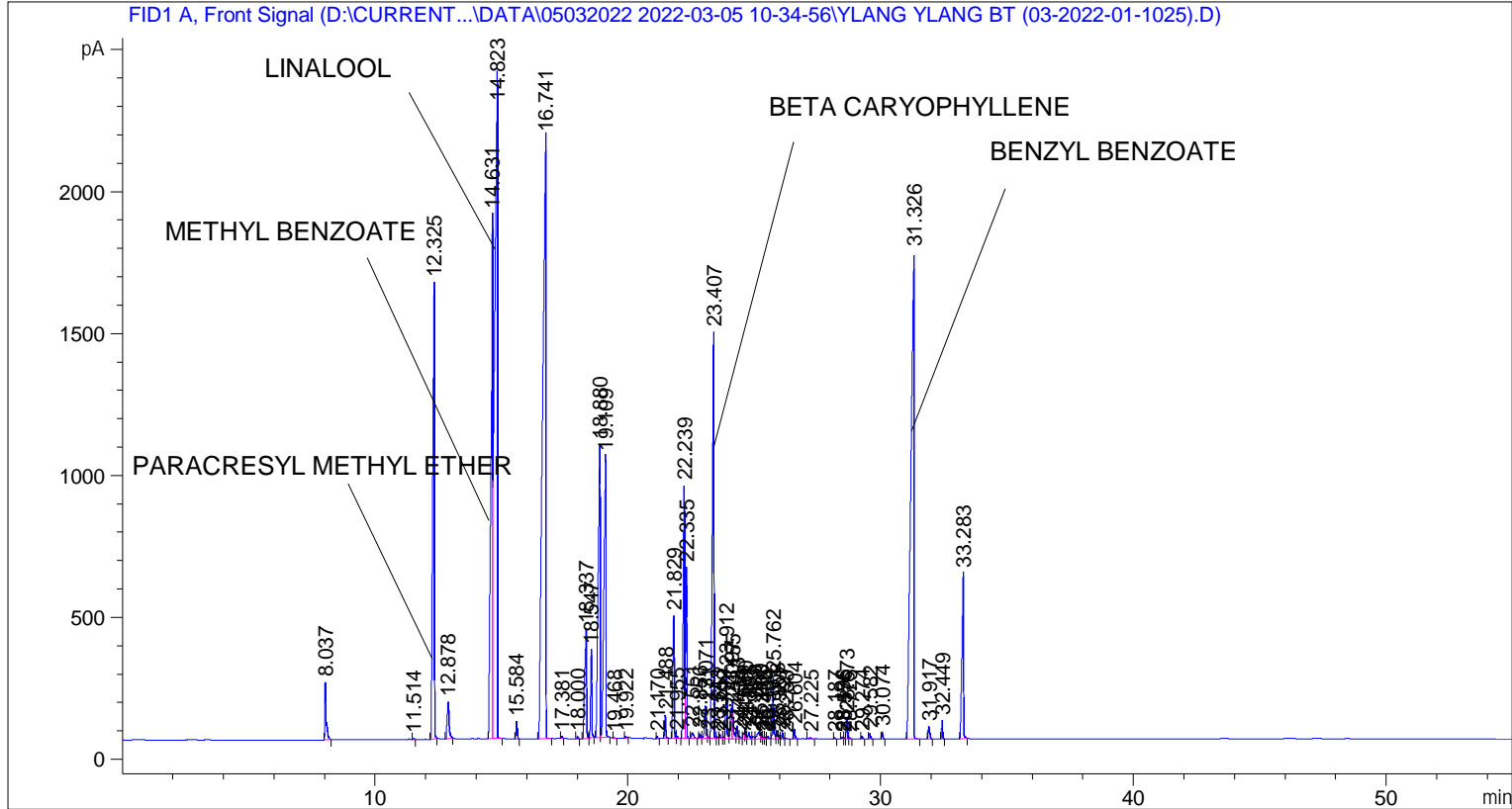


```

=====
Acq. Operator   : SYSTEM                               Seq. Line :    5
Acq. Instrument : BMV_NEW_GC_7820                     Location  : Vial 105
Injection Date  : 05-Mar-22 3:09:34 PM                Inj       :    1
                                                    Inj Volume: 0.5 µl

Acq. Method     : D:\CURRENT DATA\DATA\05032022 2022-03-05 10-34-56\UNIVERSAL BMV.M
Last changed    : 05-Mar-22 10:35:07 AM by SYSTEM
Analysis Method : C:\CHEM32\2\DATA\01042018 2018-04-01 09-29-18\UNIVERSAL F.M (Sequence
Method)
Last changed    : 09-Mar-22 3:14:45 PM by SYSTEM
                  (modified after loading)
  
```



=====
 Area Percent Report
 =====

```

Sorted By       : Signal
Multiplier      : 1.0000
Dilution       : 1.0000
Do not use Multiplier & Dilution Factor with ISTDs
  
```

Signal 1: FID1 A, Front Signal

Peak #	RetTime [min]	Type	Width [min]	Area [pA*s]	Height [pA]	Area %
1	8.037	BB	0.0558	773.13416	201.28316	0.73384
2	11.514	BB	0.0440	8.12941	2.79354	0.00772
3	12.325	BB	0.0613	7471.34180	1606.38647	7.09161
4	12.878	BB	0.0748	690.45587	130.44318	0.65536
5	14.631	BV	0.0651	9203.48340	1848.67773	8.73572
6	14.823	VB	0.0948	1.79826e4	2336.46509	17.06865
7	15.584	BB	0.0468	187.19841	61.01533	0.17768

Peak #	RetTime [min]	Type	Width [min]	Area [pA*s]	Height [pA]	Area %
8	16.741	BB	0.1117	1.91980e4	2118.61938	18.22222
9	17.381	BB	0.0545	24.88279	6.66880	0.02362
10	18.000	BB	0.0518	25.86365	7.58082	0.02455
11	18.337	BV	0.0776	2110.87036	386.96265	2.00359
12	18.547	VB	0.0496	1031.22827	311.98212	0.97882
13	18.880	BV	0.0675	5442.55762	1032.68689	5.16594
14	19.109	VB	0.0707	5319.95215	990.30920	5.04957
15	19.468	BB	0.0451	5.65538	1.93748	0.00537
16	19.922	BB	0.0545	22.27102	6.12009	0.02114
17	21.170	BB	0.0446	23.20804	8.30681	0.02203
18	21.488	BB	0.0502	267.84512	81.82867	0.25423
19	21.829	BV	0.0605	1617.54675	433.53680	1.53533
20	21.955	VB	0.0604	37.45335	8.84493	0.03555
21	22.239	BV	0.0559	3347.40430	890.42755	3.17727
22	22.335	VB	0.0488	1952.81323	602.64539	1.85356
23	22.551	BB	0.0867	129.67126	19.98815	0.12308
24	22.856	BV	0.0544	61.67931	16.98627	0.05854
25	23.071	VV	0.0561	435.92752	115.34380	0.41377
26	23.171	VV	0.0552	37.38210	10.10560	0.03548
27	23.407	VV	0.0652	6524.17090	1431.72546	6.19258
28	23.543	VV	0.0501	20.96177	6.58571	0.01990
29	23.652	VV	0.0570	51.58812	13.36677	0.04897
30	23.799	VV	0.0496	19.74851	5.97213	0.01874
31	23.912	VB	0.0480	735.41248	238.29794	0.69804
32	24.097	BV	0.0499	365.00394	106.83103	0.34645
33	24.155	VV	0.0556	513.63153	131.35146	0.48753
34	24.333	VV	0.0543	162.40848	44.79066	0.15415
35	24.434	VV	0.0600	36.40028	8.49230	0.03455
36	24.592	VV	0.0479	68.13844	21.54859	0.06468
37	24.660	VV	0.0478	117.53524	37.26473	0.11156
38	24.803	VV	0.0628	100.43191	22.17403	0.09533
39	24.983	VV	0.0903	45.23899	7.72228	0.04294
40	25.209	VV	0.0968	179.93344	25.04628	0.17079
41	25.283	VV	0.0466	62.79152	20.56264	0.05960
42	25.356	VV	0.0474	20.33333	6.34619	0.01930
43	25.435	VV	0.0497	17.89558	5.39545	0.01699
44	25.554	VV	0.0552	30.00250	8.48762	0.02848
45	25.762	VV	0.0495	696.63147	216.50429	0.66123
46	25.908	VV	0.0470	84.85552	27.46514	0.08054
47	25.981	VV	0.0452	35.89997	12.23551	0.03408
48	26.127	VV	0.0469	66.14107	21.49649	0.06278
49	26.258	VB	0.0533	8.98207	2.53581	0.00853
50	26.604	BB	0.0501	104.63333	33.86009	0.09932
51	27.225	BB	0.0687	26.17349	5.28862	0.02484
52	28.187	BB	0.0424	9.88364	3.67642	0.00938
53	28.496	BV	0.0533	21.83608	6.02594	0.02073
54	28.576	VV	0.0438	9.39733	3.14710	0.00892
55	28.673	VV	0.0477	246.51668	78.40887	0.23399
56	28.775	VB	0.0498	12.79730	3.85055	0.01215
57	29.274	BB	0.0495	29.38962	9.14921	0.02790
58	29.582	BB	0.0574	74.61383	20.06140	0.07082
59	30.074	BB	0.0504	80.56150	24.49976	0.07647
60	31.326	BB	0.1016	1.43563e4	1716.61121	13.62665
61	31.917	BB	0.0605	189.89011	44.71366	0.18024

Peak #	RetTime [min]	Type	Width [min]	Area [pA*s]	Height [pA]	Area %
62	32.449	BB	0.0482	201.62880	65.05996	0.19138
63	33.283	BB	0.0603	2618.35107	584.03400	2.48527

Totals : 1.05355e5 1.82585e4

=====
*** End of Report ***