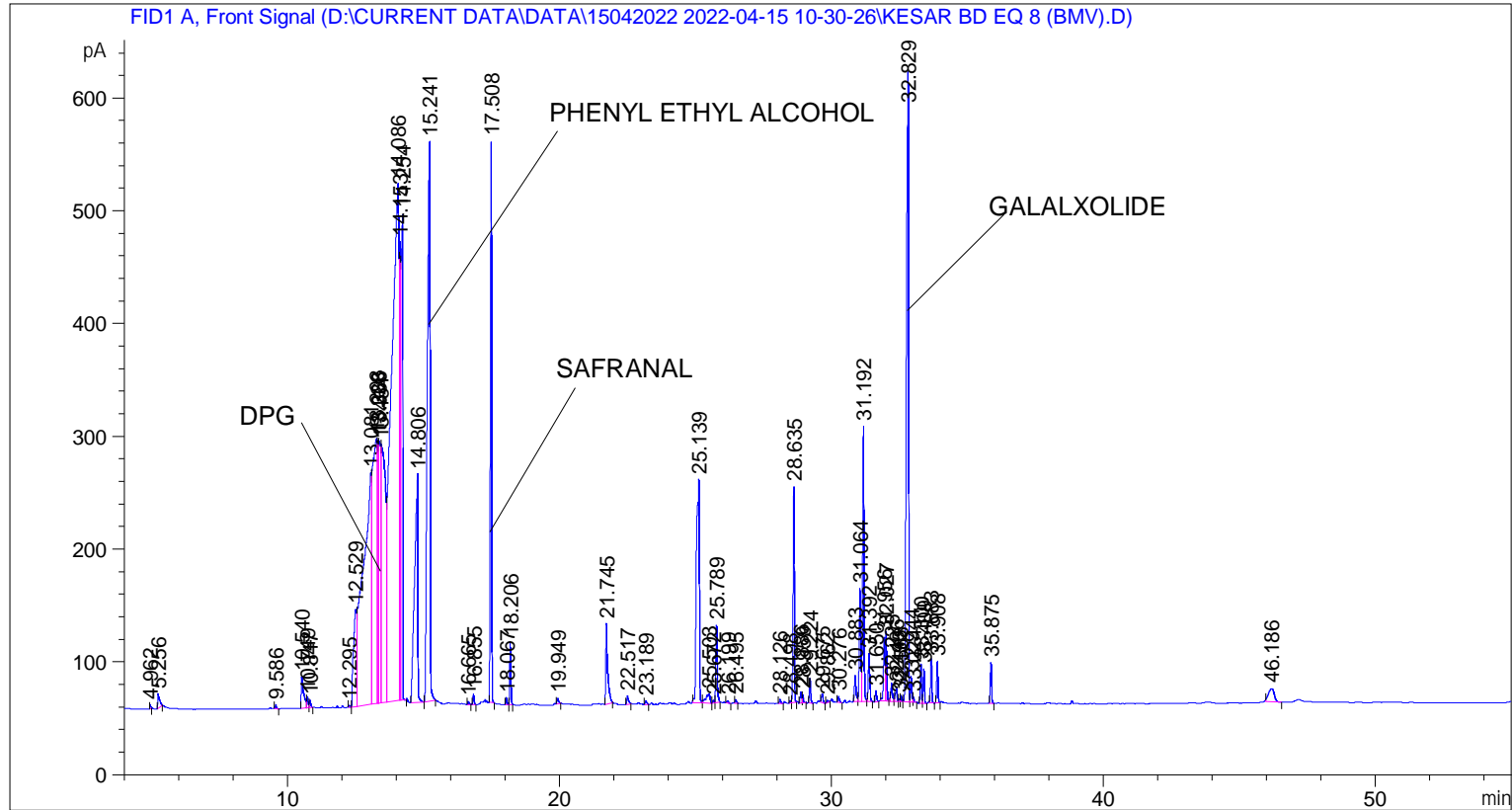


```

=====
Acq. Operator   : SYSTEM                               Seq. Line :    6
Acq. Instrument : BMV_NEW_GC_7820                     Location  : Vial 106
Injection Date  : 15-Apr-22 4:12:43 PM                Inj       :    1
                                                    Inj Volume: 0.5 µl

Acq. Method     : D:\CURRENT DATA\DATA\15042022 2022-04-15 10-30-26\UNIVERSAL BMV.M
Last changed    : 15-Apr-22 10:30:37 AM by SYSTEM
Analysis Method : C:\CHEM32\2\METHODS\COOLING.M
Last changed    : 18-Apr-22 11:45:34 AM by SYSTEM
                (modified after loading)

Additional Info : Peak(s) manually integrated
  
```



Sample Name: KESAR BD EQ 8 (BMV)

Peak #	RetTime [min]	Type	Width [min]	Area [pA*s]	Height [pA]	Area %
8	12.529	VV	0.0955	631.36322	86.12132	1.54070
9	13.081	VV	0.2422	4200.09717	205.67455	10.24937
10	13.293	VV	0.1490	2947.31567	235.51126	7.19224
11	13.328	VV	0.0270	418.84720	233.16284	1.02210
12	13.368	VV	0.0679	1279.73303	233.69205	3.12289
13	13.454	VV	0.1437	2782.47998	229.09402	6.79000
14	14.086	VV	0.2367	8914.70020	458.86176	21.75426
15	14.153	VV	0.0445	1342.02063	406.80124	3.27489
16	14.254	VB	0.0610	2111.30078	431.81403	5.15214
17	14.806	BB	0.1058	1690.35474	201.74472	4.12492
18	15.241	BB	0.0906	3470.43701	496.03223	8.46880
19	16.665	BB	0.0451	7.86500	2.77103	0.01919
20	16.855	BB	0.0444	26.86475	9.39257	0.06556
21	17.508	BB	0.0476	1563.89624	497.84140	3.81633
22	18.067	BB	0.0431	17.88796	6.50660	0.04365
23	18.206	BB	0.0425	156.90065	56.27799	0.38288
24	19.949	BB	0.0684	23.14734	4.96134	0.05649
25	21.745	BB	0.0724	351.20734	71.40807	0.85704
26	22.517	BB	0.0641	33.69154	7.69749	0.08222
27	23.189	BB	0.0604	15.40809	3.56528	0.03760
28	25.139	BV	0.0973	1482.30371	198.14743	3.61722
29	25.503	VV	0.1403	83.48248	8.09297	0.20372
30	25.672	VV	0.0561	8.48610	2.40804	0.02071
31	25.789	VB	0.0544	249.51915	68.73402	0.60889
32	26.199	BB	0.0549	7.73007	2.25965	0.01886
33	26.495	BB	0.0532	11.14368	3.07878	0.02719
34	28.126	BB	0.0509	12.54301	3.96176	0.03061
35	28.498	BV	0.0415	5.47925	2.09521	0.01337
36	28.635	VB	0.0461	608.36115	191.43845	1.48456
37	28.886	BV	0.0493	31.21622	9.75088	0.07618
38	28.959	VB	0.0482	23.39381	7.32852	0.05709
39	29.224	BB	0.0526	74.34409	21.92501	0.18142
40	29.675	BB	0.0586	30.79966	8.05547	0.07516
41	29.862	BB	0.0399	4.57462	1.84820	0.01116
42	30.276	BB	0.0592	21.61293	5.57385	0.05274
43	30.883	BV	0.0599	93.62940	23.30953	0.22848
44	31.064	VV	0.0595	391.31351	100.28090	0.95491
45	31.192	VB	0.0558	873.71600	243.77309	2.13210
46	31.392	BB	0.0573	165.51561	42.58598	0.40390
47	31.650	BB	0.0484	31.34937	9.78132	0.07650
48	31.956	BV	0.0541	205.89705	56.99111	0.50244
49	32.027	VB	0.0500	208.14519	62.21368	0.50793
50	32.225	BB	0.0587	66.25526	16.54494	0.16168
51	32.406	BV	0.0635	56.35456	12.51178	0.13752
52	32.495	VV	0.0423	7.21622	2.69385	0.01761
53	32.568	VV	0.0445	16.38910	5.70173	0.03999
54	32.829	VV	0.0762	3075.01758	559.05280	7.50387
55	32.944	VV	0.0478	70.83326	23.10128	0.17285
56	33.024	VB	0.0431	13.47442	4.61015	0.03288
57	33.300	BV	0.0493	107.92332	34.64956	0.26336
58	33.409	VB	0.0493	98.83808	30.94263	0.24119
59	33.683	BB	0.0536	130.07893	39.31636	0.31743
60	33.908	BB	0.0523	120.65639	36.73821	0.29443
61	35.875	BB	0.0518	121.59018	36.57573	0.29671

Peak #	RetTime [min]	Type	Width [min]	Area [pA*s]	Height [pA]	Area %
62	46.186	BB	0.1839	168.96773	11.60195	0.41233

Totals : 4.09791e4 5833.39239

=====
*** End of Report ***