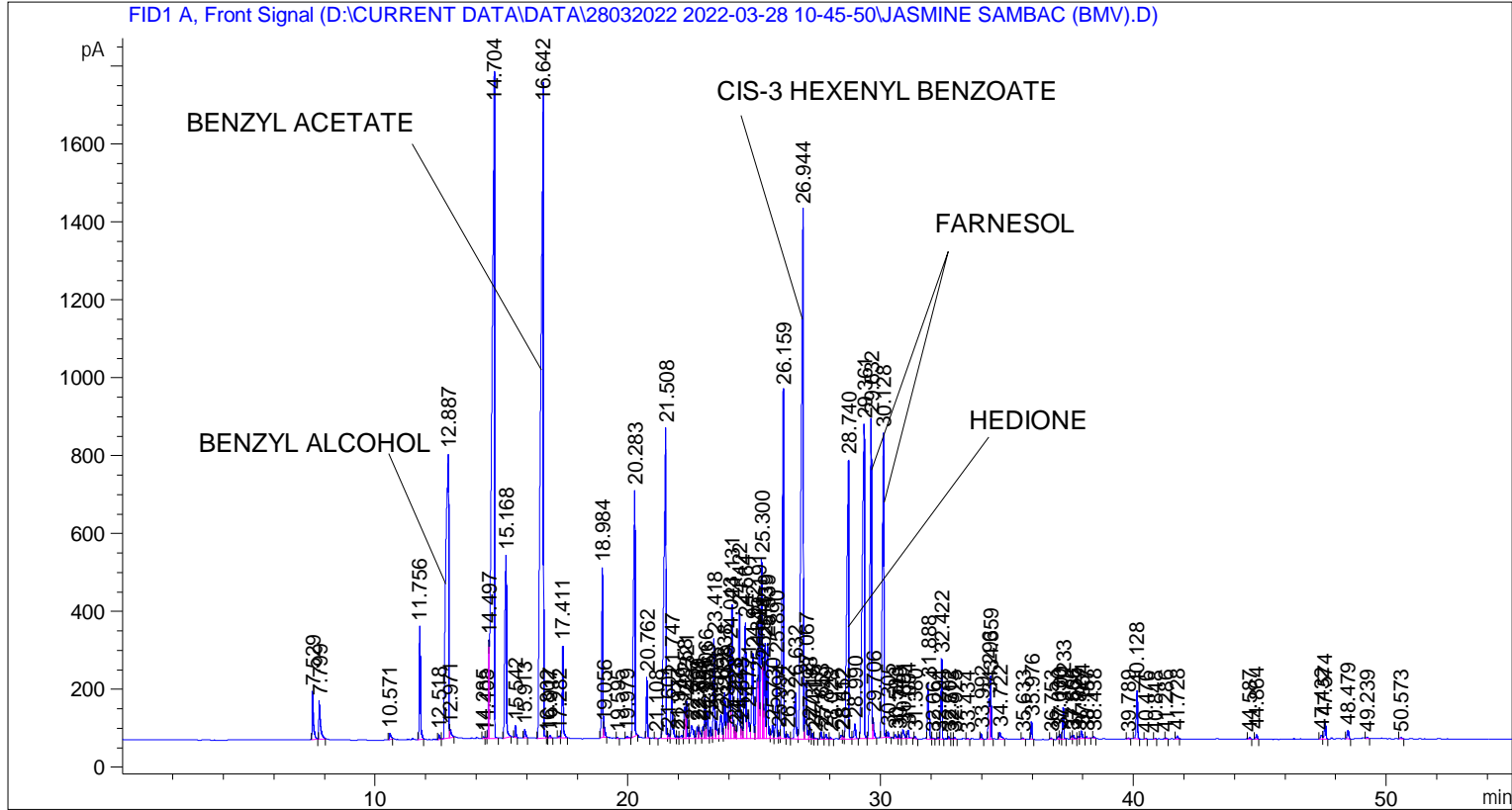


```

=====
Acq. Operator   : SYSTEM                               Seq. Line :    2
Acq. Instrument : BMV_NEW_GC_7820                     Location  : Vial 102
Injection Date  : 28-Mar-22 12:03:55 PM                Inj       :    1
                                                    Inj Volume: 0.5 µl

Acq. Method    : D:\CURRENT DATA\DATA\28032022 2022-03-28 10-45-50\UNIVERSAL BMV.M
Last changed   : 28-Mar-22 10:46:01 AM by SYSTEM
Analysis Method : C:\CHEM32\2\METHODS\COOLING.M
Last changed   : 28-Mar-22 4:19:10 PM by SYSTEM
                (modified after loading)
  
```



Area Percent Report

```

Sorted By      : Signal
Multiplier     : 1.0000
Dilution      : 1.0000
Do not use Multiplier & Dilution Factor with ISTDs
  
```

Signal 1: FID1 A, Front Signal

Peak #	RetTime [min]	Type	Width [min]	Area [pA*s]	Height [pA]	Area %
1	7.529	BB	0.0508	448.45251	125.24978	0.47420
2	7.799	BB	0.0581	418.50226	99.36794	0.44253
3	10.571	BB	0.0569	64.60139	16.07555	0.06831
4	11.756	BB	0.0480	896.61871	290.89136	0.94809
5	12.518	BB	0.0477	37.96643	11.74242	0.04015
6	12.887	BV	0.1026	5665.57813	729.88873	5.99083
7	12.971	VB	0.0608	90.92661	20.46778	0.09615
8	14.285	BV	0.0573	14.95636	3.93710	0.01581

Sample Name: JASMINE SAMBAC (BMV)

Peak #	RetTime [min]	Type	Width [min]	Area [pA*s]	Height [pA]	Area %
9	14.408	VV	0.0451	8.55021	2.92177	0.00904
10	14.497	VV	0.0413	655.58655	252.60532	0.69322
11	14.704	VV	0.0883	1.17737e4	1710.99316	12.44961
12	15.168	BB	0.0617	2159.25952	468.72537	2.28322
13	15.542	BB	0.0474	98.24160	32.35683	0.10388
14	15.913	BB	0.0560	83.36623	22.09082	0.08815
15	16.642	BV	0.0910	1.22315e4	1679.38831	12.93366
16	16.802	VV	0.0412	7.29591	2.72964	0.00771
17	16.917	VB	0.0606	30.44048	7.02485	0.03219
18	17.282	BV	0.0614	17.23405	4.15438	0.01822
19	17.411	VB	0.0482	730.24280	235.15962	0.77216
20	18.984	BV	0.0491	1463.53894	436.54013	1.54756
21	19.056	VB	0.0497	91.32964	26.87024	0.09657
22	19.595	BB	0.0427	7.79150	2.87069	0.00824
23	19.979	BB	0.0763	28.54056	5.25842	0.03018
24	20.283	BB	0.0578	2699.34180	632.00879	2.85431
25	20.762	BB	0.0464	458.87192	155.81085	0.48521
26	21.108	BB	0.0389	4.14886	1.73406	0.00439
27	21.508	BV	0.0709	4291.76660	795.69611	4.53815
28	21.601	VV	0.0594	51.93792	12.78016	0.05492
29	21.747	VB	0.0542	543.09668	146.75064	0.57427
30	21.977	BV	0.0610	20.41871	5.29469	0.02159
31	22.149	VV	0.0709	41.66679	8.25162	0.04406
32	22.258	VV	0.0484	259.42468	80.84082	0.27432
33	22.321	VV	0.0523	339.23578	95.85455	0.35871
34	22.537	VV	0.0894	226.74062	33.72608	0.23976
35	22.759	VV	0.0549	111.46000	30.32648	0.11786
36	22.824	VV	0.0671	134.37701	28.46181	0.14209
37	22.986	VV	0.0524	106.36676	31.49321	0.11247
38	23.066	VV	0.0474	329.49600	105.46356	0.34841
39	23.163	VV	0.0645	271.81992	68.25504	0.28742
40	23.272	VV	0.0530	105.07195	29.88671	0.11110
41	23.418	VV	0.0498	828.29321	255.73972	0.87584
42	23.513	VV	0.0646	210.03600	44.84726	0.22209
43	23.692	VV	0.0862	348.72375	61.41919	0.36874
44	23.838	VV	0.0530	428.06238	118.86634	0.45264
45	23.939	VV	0.0614	272.97873	67.17308	0.28865
46	24.043	VV	0.0546	858.97913	240.75789	0.90829
47	24.131	VV	0.0510	1150.32458	344.08960	1.21636
48	24.223	VV	0.0441	95.95084	31.91220	0.10146
49	24.283	VV	0.0416	61.33608	21.95001	0.06486
50	24.422	VV	0.0688	1431.03552	328.95596	1.51319
51	24.513	VV	0.0519	122.30495	32.52528	0.12933
52	24.664	VV	0.0623	1309.53870	298.06628	1.38472
53	24.771	VV	0.0830	412.12671	64.99727	0.43579
54	24.952	VV	0.0684	1039.46008	218.80679	1.09913
55	25.134	VV	0.0565	676.32111	156.35022	0.71515
56	25.191	VV	0.0514	1016.59113	300.92465	1.07495
57	25.300	VV	0.0510	1663.64343	461.98987	1.75915
58	25.348	VV	0.0349	442.29449	191.94261	0.46769
59	25.439	VV	0.0494	807.23029	245.50299	0.85357
60	25.539	VV	0.0492	806.53217	246.48421	0.85283
61	25.730	VV	0.0630	153.95766	35.22980	0.16280
62	25.890	VV	0.0509	684.98175	205.39566	0.72431

Sample Name: JASMINE SAMBAC (BMV)

Peak #	RetTime [min]	Type	Width [min]	Area [pA*s]	Height [pA]	Area %
63	25.994	VV	0.0530	55.47038	16.17864	0.05865
64	26.159	VV	0.0548	3437.04468	894.50214	3.63436
65	26.322	VV	0.0607	55.41130	12.74514	0.05859
66	26.632	VV	0.0731	544.96997	117.60989	0.57626
67	26.944	VV	0.0776	7869.26563	1359.04199	8.32102
68	27.067	VV	0.0587	612.78925	149.75993	0.64797
69	27.198	VV	0.0530	127.28556	37.12210	0.13459
70	27.315	VV	0.0495	44.89247	13.59513	0.04747
71	27.411	VB	0.0588	10.98528	2.62692	0.01162
72	27.653	BB	0.0528	66.19649	18.48172	0.07000
73	27.849	BB	0.0599	55.83740	13.60737	0.05904
74	28.028	BB	0.0456	13.46445	4.53524	0.01424
75	28.452	BV	0.0563	42.21619	10.18667	0.04464
76	28.512	VV	0.0489	25.88401	7.96502	0.02737
77	28.740	VV	0.0701	3751.14429	716.47345	3.96649
78	28.990	VB	0.0623	165.84070	38.43800	0.17536
79	29.361	BV	0.0748	4688.48340	807.01477	4.95764
80	29.632	VV	0.0569	3375.24609	821.26752	3.56901
81	29.706	VB	0.0480	176.92119	51.56708	0.18708
82	30.128	BV	0.0582	3361.62622	781.29321	3.55461
83	30.305	VB	0.0508	49.44098	14.50281	0.05228
84	30.593	BV	0.0684	46.65299	9.31797	0.04933
85	30.748	VV	0.0457	30.24941	10.18099	0.03199
86	30.891	VV	0.0691	111.03092	21.93213	0.11740
87	31.094	VB	0.0537	71.87402	20.60946	0.07600
88	31.380	BB	0.0415	14.98436	5.92787	0.01584
89	31.888	BB	0.0645	621.99402	143.79753	0.65770
90	32.064	BB	0.0719	12.03433	2.34352	0.01273
91	32.294	BV	0.0509	14.00657	4.31338	0.01481
92	32.422	VB	0.0482	656.84204	206.06363	0.69455
93	32.702	BV	0.0482	20.60501	6.82939	0.02179
94	32.813	VV	0.0483	5.79678	2.03333	0.00613
95	32.925	VB	0.0585	18.92988	4.95988	0.02002
96	33.434	BB	0.0440	5.77683	2.17273	0.00611
97	33.992	BB	0.0506	46.07206	14.28370	0.04872
98	34.296	BV	0.0468	318.43970	103.86043	0.33672
99	34.359	VB	0.0482	514.59381	161.51778	0.54414
100	34.722	BB	0.0724	89.40368	17.27710	0.09454
101	35.633	BB	0.0521	11.61209	3.46384	0.01228
102	35.976	BB	0.0491	146.19908	45.97321	0.15459
103	36.753	BB	0.0535	15.52183	4.16206	0.01641
104	37.030	BV	0.0471	21.59502	6.98055	0.02283
105	37.100	VV	0.0514	42.33473	12.55119	0.04477
106	37.233	VB	0.0514	275.18216	81.57535	0.29098
107	37.565	BV	0.0497	26.34840	8.15829	0.02786
108	37.636	VB	0.0566	35.55361	9.29267	0.03759
109	37.827	BV	0.0553	22.27789	6.14950	0.02356
110	37.964	VV	0.0628	81.57751	18.73286	0.08626
111	38.157	VB	0.0376	10.13276	4.61437	0.01071
112	38.438	BB	0.0500	13.07868	3.81351	0.01383
113	39.789	BB	0.0447	6.15827	2.42117	0.00651
114	40.128	BB	0.0549	448.09247	124.76087	0.47382
115	40.476	BB	0.0495	7.00927	2.07152	0.00741
116	40.848	BB	0.0455	6.05175	1.99031	0.00640

Peak #	RetTime [min]	Type	Width [min]	Area [pA*s]	Height [pA]	Area %
117	41.286	BB	0.0477	6.93596	2.26823	0.00733
118	41.728	BB	0.0585	29.65114	7.59750	0.03135
119	44.587	BB	0.0544	13.97146	4.14137	0.01477
120	44.864	BB	0.0532	40.13204	11.65691	0.04244
121	47.432	BV	0.0764	50.23717	9.86720	0.05312
122	47.574	VB	0.0605	167.99144	44.01771	0.17764
123	48.479	BB	0.0670	90.79217	21.62027	0.09600
124	49.239	BB	0.0599	14.34964	3.49248	0.01517
125	50.573	BB	0.0774	18.23942	3.40748	0.01929

Totals : 9.45709e4 1.94946e4

=====
*** End of Report ***