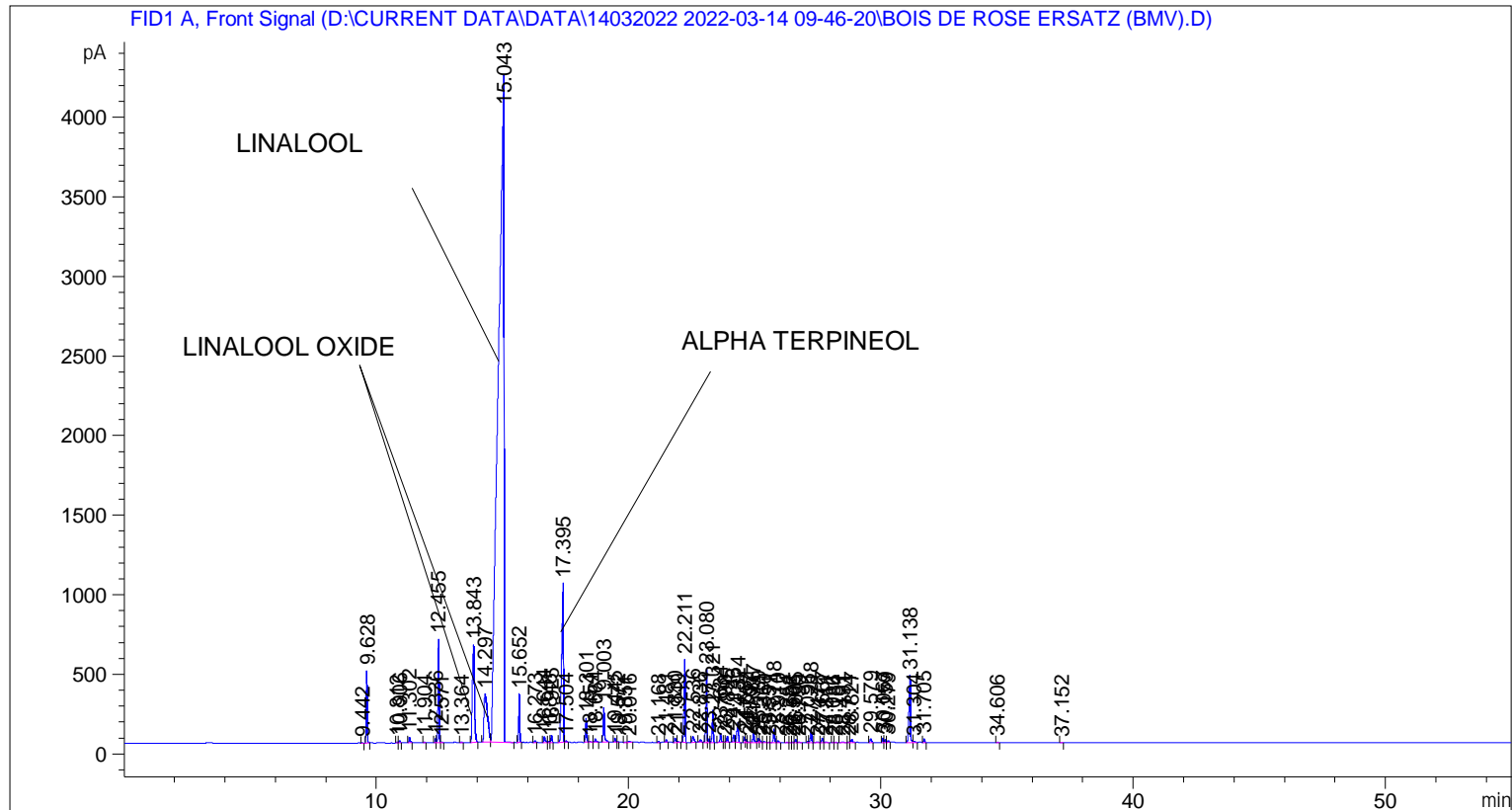


```

=====
Acq. Operator   : SYSTEM                               Seq. Line :    2
Acq. Instrument : BMV_NEW_GC_7820                     Location  : Vial 102
Injection Date  : 14-Mar-22 11:03:27 AM                Inj       :    1
                                                    Inj Volume: 0.5 µl

Acq. Method     : D:\CURRENT DATA\DATA\14032022 2022-03-14 09-46-20\UNIVERSAL BMV.M
Last changed    : 14-Mar-22 9:46:31 AM by SYSTEM
Analysis Method : C:\CHEM32\2\METHODS\COOLING.M
Last changed    : 30-Mar-22 3:17:28 PM by SYSTEM
                  (modified after loading)

Additional Info  : Peak(s) manually integrated
  
```



=====  
 Area Percent Report  
 =====

```

Sorted By       : Signal
Multiplier      : 1.0000
Dilution        : 1.0000
Do not use Multiplier & Dilution Factor with ISTDs
  
```

Signal 1: FID1 A, Front Signal

Peak #	RetTime [min]	Type	Width [min]	Area [pA*s]	Height [pA]	Area %
1	9.442	BB	0.0391	6.67611	2.67488	0.00731
2	9.628	BB	0.0435	1228.80725	455.80209	1.34583
3	10.812	BV	0.0419	17.35898	6.54364	0.01901
4	10.906	VB	0.0441	43.56096	15.33346	0.04771
5	11.302	BB	0.0481	121.69494	38.23374	0.13328
6	11.904	BB	0.0440	11.42862	4.04171	0.01252
7	12.336	BV	0.0421	72.67386	27.29528	0.07959

Peak #	RetTime [min]	Type	Width [min]	Area [pA*s]	Height [pA]	Area %
8	12.455	VV	0.0454	1868.10986	652.80798	2.04601
9	12.571	VB	0.0564	17.63688	4.42993	0.01932
10	13.364	BB	0.0452	13.26107	4.66518	0.01452
11	13.843	BB	0.0888	3525.21655	615.42413	3.86092
12	14.297	BV	0.1322	2959.47778	305.09143	3.24131
13	15.043	VB	0.1838	6.49421e4	4214.34521	71.12652
14	15.652	BB	0.0425	818.21997	302.78922	0.89614
15	16.273	BB	0.0486	29.35955	9.62511	0.03216
16	16.644	BB	0.0520	141.46254	39.32157	0.15493
17	16.846	BV	0.0479	21.55103	7.01231	0.02360
18	16.925	VB	0.0457	134.09741	45.10417	0.14687
19	17.395	BV	0.0639	4935.65039	994.96716	5.40567
20	17.504	VB	0.0519	33.11814	9.69043	0.03627
21	18.301	BV	0.0466	471.88077	154.72702	0.51682
22	18.454	VB	0.0678	20.07564	4.51900	0.02199
23	18.664	BB	0.0583	89.01190	22.94121	0.09749
24	19.003	BB	0.0511	748.82996	218.07010	0.82014
25	19.445	BV	0.0517	91.98847	25.71684	0.10075
26	19.572	VV	0.0515	16.93310	4.75485	0.01855
27	19.851	BB	0.0425	10.67288	3.83029	0.01169
28	20.016	BB	0.0812	39.71254	6.99865	0.04349
29	21.168	BB	0.0453	23.40340	8.20208	0.02563
30	21.481	BB	0.0460	49.48292	16.96694	0.05420
31	21.830	BV	0.0580	110.14535	27.90709	0.12063
32	21.949	VB	0.0434	14.08535	4.77393	0.01543
33	22.211	BB	0.0505	1680.53015	522.48627	1.84057
34	22.536	BB	0.0695	176.67586	35.86678	0.19350
35	22.836	BB	0.0544	58.70992	16.53103	0.06430
36	23.080	BV	0.0479	1453.49768	459.25882	1.59191
37	23.171	VV	0.0445	69.73862	24.28634	0.07638
38	23.321	VB	0.0472	614.26385	203.34749	0.67276
39	23.634	BB	0.0514	187.63487	55.51246	0.20550
40	23.790	BV	0.0495	9.84180	2.83658	0.01078
41	23.895	VB	0.0462	109.54503	37.35537	0.11998
42	24.146	BV	0.0558	169.50874	46.21088	0.18565
43	24.324	VB	0.0625	526.77362	119.29774	0.57694
44	24.581	BV	0.0472	106.84043	35.39834	0.11701
45	24.652	VV	0.0459	56.16132	18.76256	0.06151
46	24.797	VV	0.0644	15.83865	3.27801	0.01735
47	24.937	VB	0.0522	228.86264	64.87775	0.25066
48	25.139	BV	0.0583	98.53241	25.93749	0.10792
49	25.211	VB	0.0470	33.29715	10.50466	0.03647
50	25.360	BB	0.0659	28.14189	5.87126	0.03082
51	25.551	BV	0.0616	14.40774	3.60988	0.01578
52	25.748	VV	0.0530	298.55765	87.05563	0.32699
53	25.910	VB	0.0511	39.39158	11.46209	0.04314
54	26.254	BB	0.0551	9.32424	2.64414	0.01021
55	26.382	BB	0.0386	3.61872	1.58945	0.00396
56	26.505	BV	0.0471	11.73541	3.79233	0.01285
57	26.605	VV	0.0491	63.35833	19.90316	0.06939
58	26.730	VB	0.0559	11.30141	3.30717	0.01238
59	27.096	BV	0.0469	22.50681	7.31255	0.02465
60	27.218	VB	0.0533	290.64642	84.21310	0.31832
61	27.478	BV	0.1011	23.86109	3.27300	0.02613

Peak #	RetTime [min]	Type	Width [min]	Area [pA*s]	Height [pA]	Area %
62	27.667	VV	0.0521	92.43095	28.31497	0.10123
63	27.811	VB	0.0675	24.87912	5.22568	0.02725
64	28.086	BV	0.0517	9.24167	2.86292	0.01012
65	28.184	VB	0.0518	9.02968	2.58024	0.00989
66	28.491	BB	0.0807	23.04695	3.91544	0.02524
67	28.714	BV	0.0498	14.32252	4.54395	0.01569
68	28.827	VB	0.0623	84.93569	19.69488	0.09302
69	29.579	BB	0.0584	94.99562	24.98657	0.10404
70	30.067	BV	0.0512	81.63403	25.62489	0.08941
71	30.159	VV	0.0516	61.11904	18.96305	0.06694
72	30.279	VB	0.0449	34.21033	11.75832	0.03747
73	31.138	BV	0.0563	1606.77795	423.28033	1.75979
74	31.304	VB	0.0610	31.86724	7.43324	0.03490
75	31.705	BB	0.0477	76.58860	25.01842	0.08388
76	34.606	BB	0.0493	10.71202	3.43819	0.01173
77	37.152	BB	0.0510	8.45694	2.52798	0.00926

Totals : 9.13050e4 1.07806e4

=====  
\*\*\* End of Report \*\*\*