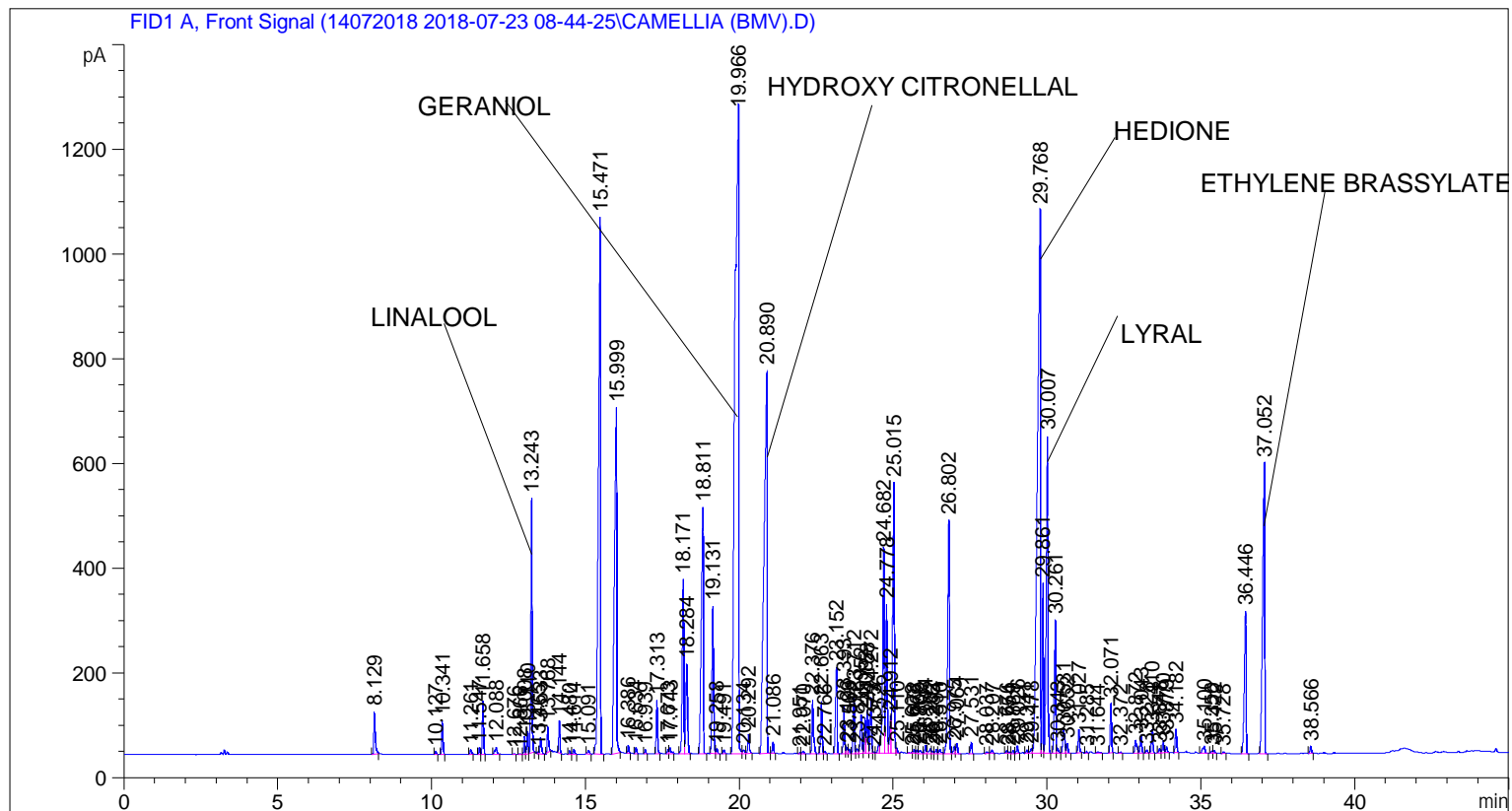


```
=====
Acq. Operator   : SYSTEM                               Seq. Line :    4
Acq. Instrument : BMV_NEW_GC_7820                     Location  : Vial 104
Injection Date  : 7/23/2018 12:17:02 PM                Inj       :    1
                                                    Inj Volume: 0.5 µl

Acq. Method     : C:\CHEM32\2\DATA\14072018 2018-07-23 08-44-25\UNIVERSAL BMV.M
Last changed    : 7/23/2018 8:44:32 AM by SYSTEM
Analysis Method : C:\CHEM32\2\DATA\14072018 2018-07-23 08-44-25\UNIVERSAL BMV.M (Sequence
Method)
Last changed    : 1/29/2020 2:02:01 PM by SYSTEM
                  (modified after loading)
Additional Info  : Peak(s) manually integrated
```



=====
 Area Percent Report
 =====

```
Sorted By      :      Signal
Multiplier     :      1.0000
Dilution       :      1.0000
Do not use Multiplier & Dilution Factor with ISTDs
```

Signal 1: FID1 A, Front Signal

Peak #	RetTime [min]	Type	Width [min]	Area [pA*s]	Height [pA]	Area %
1	8.129	BB	0.0459	256.01730	80.87720	0.43252
2	10.127	BB	0.0433	18.69145	6.75959	0.03158
3	10.341	BB	0.0453	185.23068	64.90415	0.31293
4	11.261	BB	0.0512	32.23605	9.35406	0.05446
5	11.547	BV	0.0423	37.41779	13.93044	0.06321
6	11.658	VB	0.0456	295.35660	102.53850	0.49898

Sample Name: CAMELLIA (BMV)

Peak #	RetTime [min]	Type	Width [min]	Area [pA*s]	Height [pA]	Area %
7	12.088	BB	0.0634	61.28008	13.39934	0.10353
8	12.676	BB	0.0347	3.43018	1.68980	0.00580
9	12.866	BB	0.0424	4.45483	1.70907	0.00753
10	13.008	BV	0.0437	96.29124	34.36518	0.16268
11	13.110	VV	0.0440	121.97453	43.10789	0.20607
12	13.243	VB	0.0450	1419.10339	486.27588	2.39745
13	13.465	BV	0.0334	8.53074	4.08423	0.01441
14	13.533	VB	0.0555	114.33984	31.36712	0.19317
15	13.768	BB	0.0455	157.14639	51.66054	0.26549
16	14.144	BB	0.0431	169.45935	61.55821	0.28629
17	14.480	BB	0.0480	23.53101	7.42199	0.03975
18	14.614	BB	0.0550	34.47400	9.81493	0.05824
19	15.091	BB	0.0629	26.16090	6.11349	0.04420
20	15.471	BB	0.0642	4851.03564	1025.24170	8.19541
21	15.999	BB	0.0685	3363.07739	658.91602	5.68163
22	16.386	BB	0.0425	42.47059	15.74369	0.07175
23	16.634	BB	0.0433	33.50264	11.75522	0.05660
24	16.939	BB	0.0437	23.49646	8.39333	0.03970
25	17.313	BB	0.0440	288.06772	101.79301	0.48667
26	17.673	BV	0.0442	22.88923	8.05260	0.03867
27	17.743	VB	0.0565	45.61929	11.69933	0.07707
28	18.171	BV	0.0505	1157.59900	333.29507	1.95566
29	18.284	VB	0.0630	686.02490	170.17152	1.15898
30	18.811	BB	0.0616	2163.89844	470.78827	3.65572
31	19.131	BV	0.0525	1002.95447	281.68509	1.69441
32	19.258	VB	0.0494	30.82201	9.35741	0.05207
33	19.491	BB	0.0496	24.34013	7.55513	0.04112
34	19.966	BV	0.1078	1.06907e4	1237.38696	18.06099
35	20.134	VV	0.0707	34.49159	6.85042	0.05827
36	20.292	VB	0.0501	118.62491	36.29119	0.20041
37	20.890	BV	0.0904	5040.79980	731.44110	8.51600
38	21.086	VB	0.0432	62.85163	22.74765	0.10618
39	21.951	BV	0.0446	6.13917	2.19855	0.01037
40	22.070	VB	0.0541	18.96898	5.37814	0.03205
41	22.376	BB	0.0537	367.58740	102.92681	0.62101
42	22.663	BV	0.0517	332.34250	100.18561	0.56146
43	22.766	VB	0.0482	15.11588	5.00981	0.02554
44	23.152	BB	0.0558	588.48828	164.38373	0.99420
45	23.393	BV	0.0487	287.70566	91.38342	0.48605
46	23.496	VV	0.0519	41.11926	12.02530	0.06947
47	23.563	VV	0.0480	27.32171	8.85016	0.04616
48	23.712	VV	0.0481	323.46362	107.53577	0.54646
49	23.816	VV	0.0684	39.86866	8.87905	0.06735
50	23.952	VV	0.0631	293.78357	74.38667	0.49632
51	24.082	VV	0.0476	213.19305	67.93470	0.36017
52	24.158	VV	0.0459	249.33896	83.29805	0.42124
53	24.272	VV	0.0488	334.66452	106.18534	0.56539
54	24.373	VV	0.0507	9.16399	2.76502	0.01548
55	24.526	VV	0.0525	71.15680	20.49548	0.12021
56	24.682	VV	0.0529	1412.96155	392.96222	2.38708
57	24.778	VV	0.0513	958.38989	284.19504	1.61912
58	24.912	VV	0.0454	221.95262	71.05956	0.37497
59	25.015	VV	0.0595	2016.39148	517.48187	3.40652
60	25.110	VB	0.0469	31.48417	9.70438	0.05319

Sample Name: CAMELLIA (BMV)

Peak #	RetTime [min]	Type	Width [min]	Area [pA*s]	Height [pA]	Area %
61	25.608	BV	0.0596	14.95179	3.51729	0.02526
62	25.672	VV	0.0489	24.41100	7.52311	0.04124
63	25.765	VV	0.0509	23.11285	7.11158	0.03905
64	25.862	VV	0.0757	30.77066	5.63660	0.05198
65	26.044	VV	0.0501	50.76746	15.53995	0.08577
66	26.202	VV	0.0734	45.05977	8.84323	0.07612
67	26.285	VV	0.0474	14.19712	4.55345	0.02398
68	26.394	VV	0.0550	29.11507	8.28162	0.04919
69	26.510	VV	0.0642	31.49804	7.46412	0.05321
70	26.802	VV	0.0529	1640.23352	445.77524	2.77103
71	26.975	VV	0.0557	50.19793	14.04613	0.08481
72	27.064	VB	0.0494	59.78246	18.62984	0.10100
73	27.531	BB	0.0470	67.92586	21.98527	0.11475
74	28.037	BB	0.0511	11.80965	3.71867	0.01995
75	28.207	BB	0.0551	21.84258	5.91876	0.03690
76	28.676	BV	0.0505	17.94434	5.58581	0.03032
77	28.754	VB	0.0491	11.20061	3.33965	0.01892
78	28.889	BV	0.0561	18.50751	5.25688	0.03127
79	29.026	VB	0.0519	46.43842	14.31257	0.07845
80	29.341	BV	0.0589	25.12754	6.52222	0.04245
81	29.478	VV	0.0621	38.15455	8.71785	0.06446
82	29.768	VV	0.0886	7083.38916	1037.57202	11.96678
83	29.861	VV	0.0382	785.38910	324.76266	1.32685
84	30.007	VB	0.0504	2205.82251	606.77869	3.72655
85	30.261	BV	0.0480	829.53735	254.45015	1.40143
86	30.343	VV	0.0516	31.99019	9.42493	0.05404
87	30.531	VV	0.0683	207.42645	46.27718	0.35043
88	30.652	VB	0.0474	57.23276	18.84598	0.09669
89	31.027	BB	0.0486	140.35503	44.68819	0.23712
90	31.285	BV	0.0500	9.41979	2.88865	0.01591
91	31.644	BB	0.0792	18.92071	3.28474	0.03196
92	32.071	BB	0.0467	289.23157	94.47505	0.48863
93	32.372	BB	0.0414	4.44000	1.70667	0.00750
94	32.872	BV	0.0629	109.87804	24.67888	0.18563
95	33.043	VB	0.0529	116.01401	34.76701	0.19600
96	33.228	BB	0.0567	21.24573	5.67433	0.03589
97	33.410	BB	0.0515	151.03354	45.75274	0.25516
98	33.648	BV	0.0511	27.78424	8.29005	0.04694
99	33.770	VV	0.0511	80.11354	23.92335	0.13534
100	33.879	VB	0.0514	37.42412	11.37889	0.06322
101	34.182	BB	0.0536	153.56367	45.21985	0.25943
102	35.100	BB	0.0715	69.29436	13.57930	0.11707
103	35.356	BV	0.0464	13.51755	4.45210	0.02284
104	35.422	VB	0.0510	20.61739	6.01116	0.03483
105	35.728	BB	0.0539	10.30040	2.93862	0.01740
106	36.446	BB	0.0613	1150.92285	272.20160	1.94439
107	37.052	BB	0.0655	2639.56860	555.03546	4.45933
108	38.566	BB	0.0530	45.65458	13.30701	0.07713

Totals : 5.91921e4 1.25540e4

*** End of Report ***