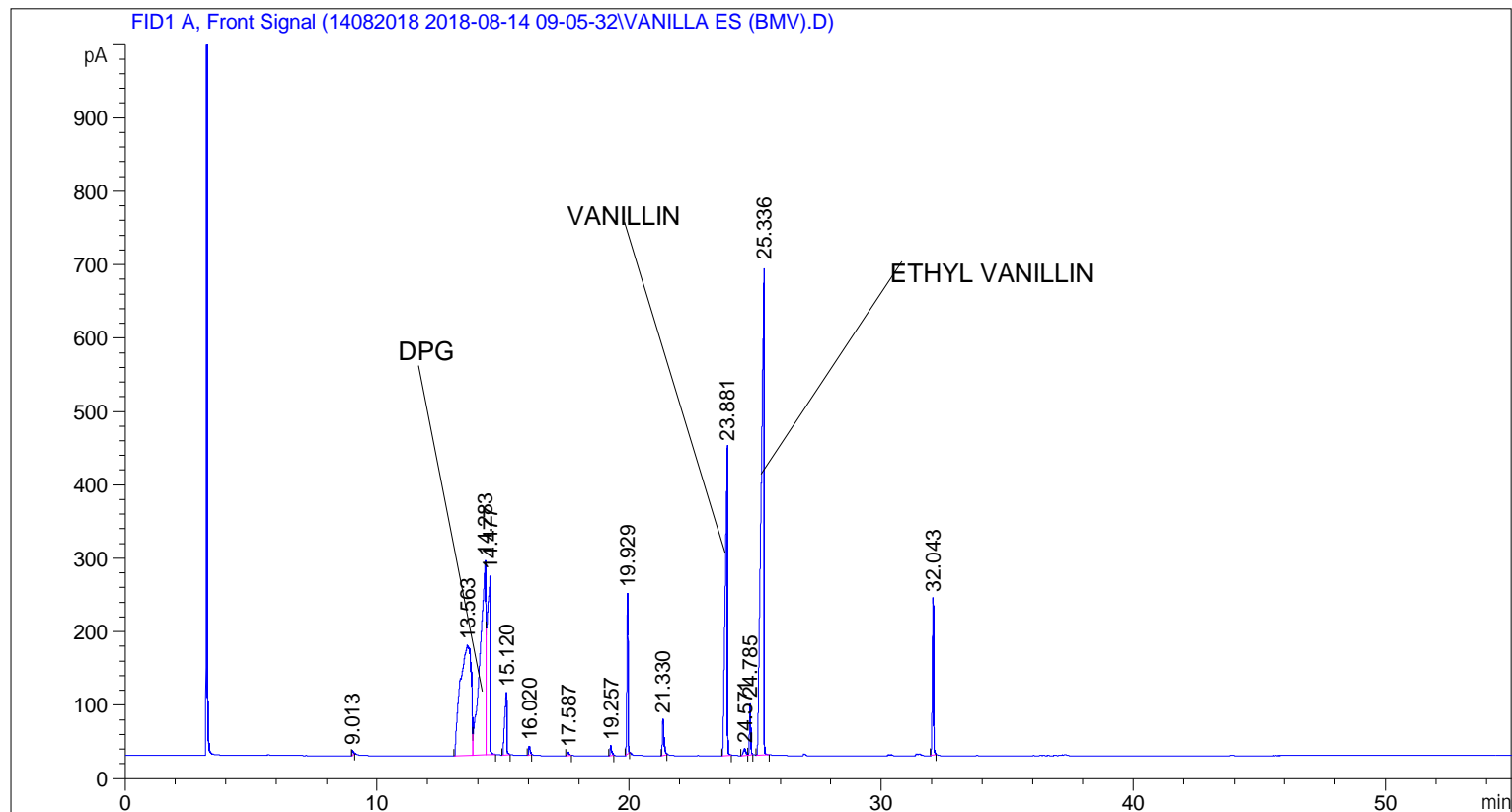


```

=====
Acq. Operator   : SYSTEM                               Seq. Line :    3
Acq. Instrument : BMV_NEW_GC_7820                     Location  : Vial 103
Injection Date  : 8/14/2018 11:34:15 AM                Inj       :    1
                                                    Inj Volume: 0.5 µl

Acq. Method     : C:\CHEM32\2\DATA\14082018 2018-08-14 09-05-32\UNIVERSAL BMV.M
Last changed    : 8/14/2018 9:05:37 AM by SYSTEM
Analysis Method : C:\CHEM32\2\DATA\14082018 2018-08-14 09-05-32\UNIVERSAL BMV.M (Sequence
Method)
Last changed    : 8/27/2018 2:36:47 PM by SYSTEM
                  (modified after loading)

Additional Info : Peak(s) manually integrated
  
```



=====  
 Area Percent Report  
 =====

```

Sorted By      :      Signal
Multiplier     :      1.0000
Dilution      :      1.0000
Do not use Multiplier & Dilution Factor with ISTDs
  
```

Signal 1: FID1 A, Front Signal

Peak #	RetTime [min]	Type	Width [min]	Area [pA*s]	Height [pA]	Area %
1	9.013	BB	0.0481	24.54863	7.14139	0.11477
2	13.563	BV	0.3531	4510.68359	150.30989	21.08771
3	14.283	VV	0.1977	4301.66992	264.57788	20.11056
4	14.477	VB	0.0975	1958.84338	244.40857	9.15771
5	15.120	BB	0.0736	490.43228	85.95403	2.29280
6	16.020	BB	0.0559	52.46576	13.33202	0.24528

Sample Name: VANILLA ES (BMV)

Peak #	RetTime [min]	Type	Width [min]	Area [pA*s]	Height [pA]	Area %
7	17.587	BB	0.0649	21.91955	4.83073	0.10248
8	19.257	BB	0.0611	59.03643	14.33086	0.27600
9	19.929	BB	0.0491	677.17682	219.04279	3.16584
10	21.330	BB	0.0656	227.38293	50.39667	1.06303
11	23.881	BB	0.0812	2646.17114	421.56131	12.37101
12	24.571	BV	0.0942	63.40384	9.33443	0.29642
13	24.785	VB	0.0484	225.37598	70.29548	1.05365
14	25.336	BB	0.0996	5409.99512	667.40143	25.29205
15	32.043	BB	0.0522	720.99878	214.83096	3.37071

Totals : 2.13901e4 2437.74843

=====  
\*\*\* End of Report \*\*\*