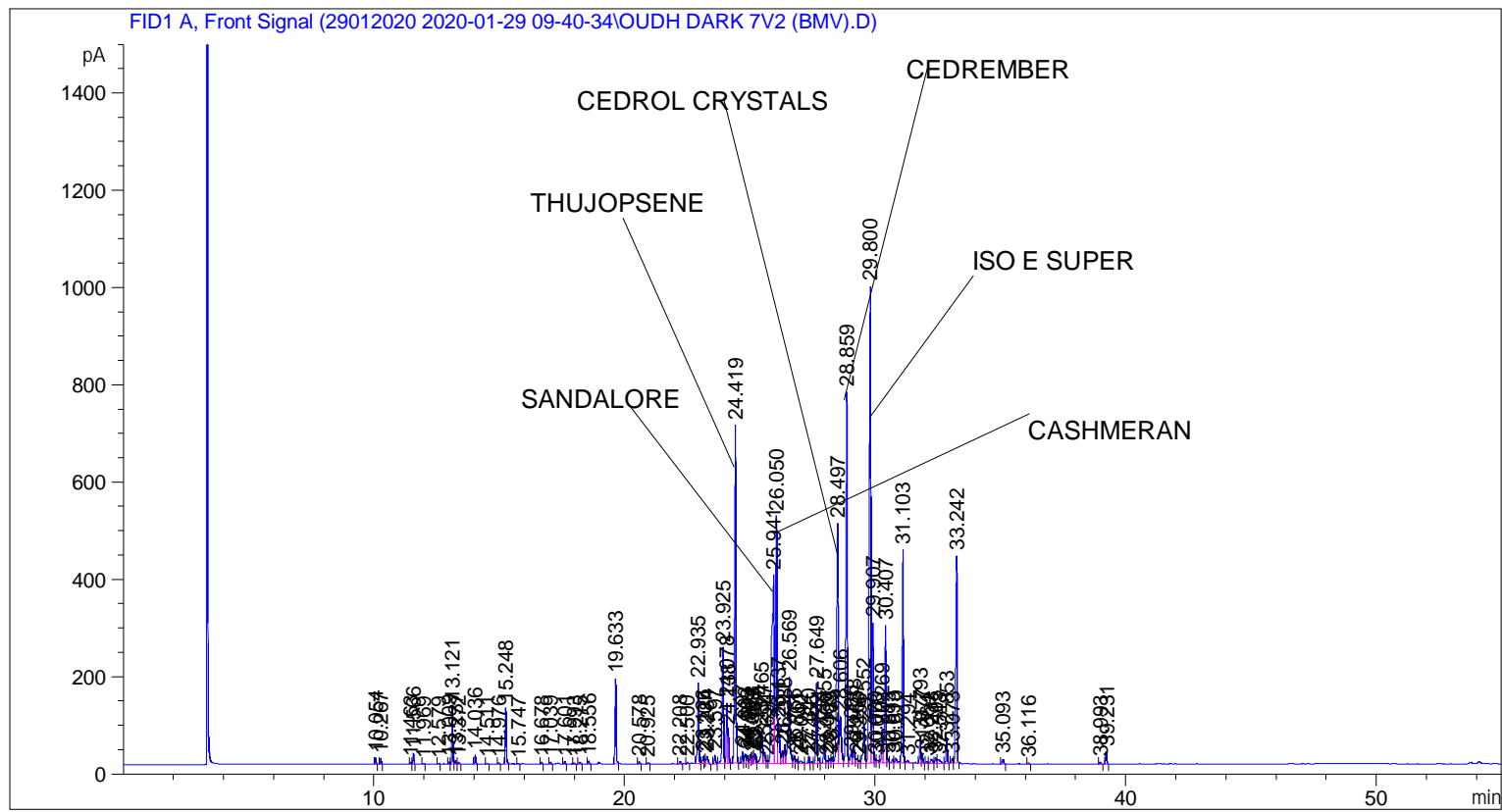


```

=====
Acq. Operator   : SYSTEM                               Seq. Line :    2
Acq. Instrument : BMV_NEW_GC_7820                     Location  : Vial 102
Injection Date  : 1/29/2020 10:57:04 AM                Inj       :    1
                                                    Inj Volume: 0.5 µl

Acq. Method     : C:\CHEM32\2\DATA\29012020 2020-01-29 09-40-34\UNIVERSAL BMV.M
Last changed    : 1/29/2020 9:40:42 AM by SYSTEM
Analysis Method : C:\CHEM32\2\METHODS\COOLING.M
Last changed    : 1/29/2020 12:40:55 PM by SYSTEM
                  (modified after loading)

Additional Info  : Peak(s) manually integrated
  
```



=====  
 Area Percent Report  
 =====

```

Sorted By       : Signal
Multiplier      : 1.0000
Dilution       : 1.0000
Do not use Multiplier & Dilution Factor with ISTDs
  
```

Signal 1: FID1 A, Front Signal

Peak #	RetTime [min]	Type	Width [min]	Area [pA*s]	Height [pA]	Area %
1	10.054	BB	0.0416	38.66716	14.28998	0.12265
2	10.267	BB	0.0417	33.37572	12.29598	0.10587
3	11.463	BV	0.0426	13.27172	4.74752	0.04210
4	11.566	VB	0.0429	61.53540	21.84904	0.19519
5	11.969	BB	0.0470	7.35924	2.38305	0.02334
6	12.579	BB	0.0413	5.07116	1.88919	0.01609
7	13.009	BV	0.0403	15.67107	6.02418	0.04971

Sample Name: OUDH DARK 7V2 (BMV)

Peak #	RetTime [min]	Type	Width [min]	Area [pA*s]	Height [pA]	Area %
8	13.121	VV	0.0433	333.45474	120.57860	1.05773
9	13.237	VB	0.0508	25.66628	7.72389	0.08141
10	13.372	BB	0.0456	11.89347	3.89743	0.03773
11	14.036	BB	0.0431	54.42206	19.20545	0.17263
12	14.511	BB	0.0500	8.27199	2.54088	0.02624
13	14.976	BB	0.0542	9.44499	2.49532	0.02996
14	15.248	BB	0.0449	346.19894	115.65666	1.09816
15	15.747	BB	0.0431	5.32610	1.93663	0.01689
16	16.678	BB	0.0479	14.35736	4.54329	0.04554
17	17.039	BB	0.0445	10.76097	3.64343	0.03413
18	17.601	BB	0.0478	16.91815	5.52021	0.05366
19	17.993	BB	0.0474	7.82176	2.57586	0.02481
20	18.215	BB	0.0663	17.44804	3.82111	0.05535
21	18.556	BB	0.0522	23.33913	6.60245	0.07403
22	19.633	BB	0.0454	515.78815	174.87383	1.63610
23	20.578	BB	0.0525	20.36817	5.86083	0.06461
24	20.925	BB	0.0596	10.75309	2.69074	0.03411
25	22.208	BB	0.0585	18.51715	5.08612	0.05874
26	22.500	BB	0.0433	8.83650	3.19340	0.02803
27	22.935	BB	0.0516	562.84491	165.86208	1.78536
28	23.126	BV	0.0505	50.37805	14.88224	0.15980
29	23.207	VV	0.0484	31.53785	9.84490	0.10004
30	23.284	VB	0.0760	75.78029	15.50079	0.24038
31	23.597	BB	0.0533	59.34324	17.19631	0.18824
32	23.925	BV	0.0703	1006.20935	238.10680	3.19173
33	24.078	VV	0.0512	414.02509	123.23612	1.31330
34	24.138	VB	0.0397	173.31270	65.84177	0.54975
35	24.419	BB	0.0547	2595.20117	692.95001	8.23207
36	24.697	BV	0.0464	75.73070	24.95762	0.24022
37	24.803	VV	0.0723	88.60726	19.75728	0.28107
38	24.903	VV	0.0519	60.32875	17.62174	0.19136
39	25.014	VV	0.0520	69.33270	19.73865	0.21993
40	25.089	VV	0.0446	41.44771	13.57737	0.13147
41	25.147	VV	0.0409	44.64811	15.82431	0.14163
42	25.197	VV	0.0541	74.42908	20.62715	0.23609
43	25.465	VV	0.0705	350.83624	71.23895	1.11287
44	25.577	VV	0.0568	93.87363	23.91972	0.29777
45	25.694	VV	0.0542	26.47509	6.99092	0.08398
46	25.941	VV	0.0905	2735.22290	387.00961	8.67623
47	26.050	VV	0.0552	1886.14575	509.44327	5.98292
48	26.137	VV	0.0672	401.28156	81.86782	1.27288
49	26.291	VV	0.0670	116.88133	26.72143	0.37075
50	26.388	VV	0.0554	148.12453	38.88657	0.46986
51	26.569	VV	0.0696	882.49445	178.62988	2.79930
52	26.756	VV	0.0562	57.46316	15.17768	0.18228
53	26.861	VV	0.0618	36.51290	9.10876	0.11582
54	27.042	VV	0.1034	47.40306	5.91918	0.15036
55	27.340	VV	0.0546	53.73076	15.07124	0.17044
56	27.466	VV	0.0545	13.48035	3.69727	0.04276
57	27.649	VV	0.0517	532.99664	164.80556	1.69068
58	27.744	VV	0.0532	38.73188	11.24121	0.12286
59	27.955	VV	0.0573	210.59142	55.47696	0.66800
60	28.069	VV	0.0642	30.34978	6.65170	0.09627
61	28.189	VV	0.0591	40.16293	10.39866	0.12740

Sample Name: OUDH DARK 7V2 (BMV)

Peak #	RetTime [min]	Type	Width [min]	Area [pA*s]	Height [pA]	Area %
62	28.275	VV	0.0493	47.37871	13.71043	0.15029
63	28.497	VV	0.0579	2068.87646	494.02988	6.56255
64	28.606	VV	0.0781	546.01086	96.40147	1.73197
65	28.859	VV	0.0581	2887.46191	763.95190	9.15913
66	29.036	VV	0.0684	103.50026	22.19347	0.32831
67	29.138	VV	0.0749	169.39523	35.34906	0.53733
68	29.263	VV	0.0721	48.82893	9.80823	0.15489
69	29.356	VV	0.0529	20.42046	5.68273	0.06477
70	29.552	VV	0.0708	375.64923	78.48797	1.19157
71	29.800	VV	0.0657	4175.87695	980.21814	13.24603
72	29.907	VV	0.0442	845.81158	288.70398	2.68295
73	30.000	VV	0.0603	36.72955	9.06717	0.11651
74	30.078	VB	0.0741	33.69510	6.13675	0.10688
75	30.269	BV	0.0534	246.20139	67.72102	0.78096
76	30.407	VV	0.0531	1021.87860	282.96078	3.24144
77	30.513	VV	0.0556	32.98757	8.83092	0.10464
78	30.693	VV	0.0641	33.29148	7.75890	0.10560
79	30.810	VV	0.0797	61.16033	10.38239	0.19400
80	31.103	VV	0.0537	1562.71387	437.73248	4.95699
81	31.294	VB	0.0626	23.01547	5.41152	0.07301
82	31.793	BV	0.0490	180.83672	57.07125	0.57362
83	31.877	VB	0.0461	50.68444	16.38348	0.16077
84	32.064	BV	0.0574	13.85302	3.81522	0.04394
85	32.233	VV	0.0784	50.43378	8.99919	0.15998
86	32.405	VV	0.0617	47.86505	11.70718	0.15183
87	32.543	VV	0.1071	64.91173	8.13613	0.20590
88	32.853	VB	0.0512	166.24556	52.12328	0.52734
89	33.073	BV	0.0536	35.48693	9.94132	0.11257
90	33.242	VB	0.0574	1657.42371	426.06296	5.25741
91	35.093	BB	0.0616	41.99024	9.87815	0.13319
92	36.116	BB	0.0512	6.65848	2.03431	0.02112
93	38.993	BB	0.0517	14.02177	4.22526	0.04448
94	39.231	BB	0.0558	93.73888	26.14055	0.29734

Totals : 3.15255e4 7914.76407

=====  
\*\*\* End of Report \*\*\*