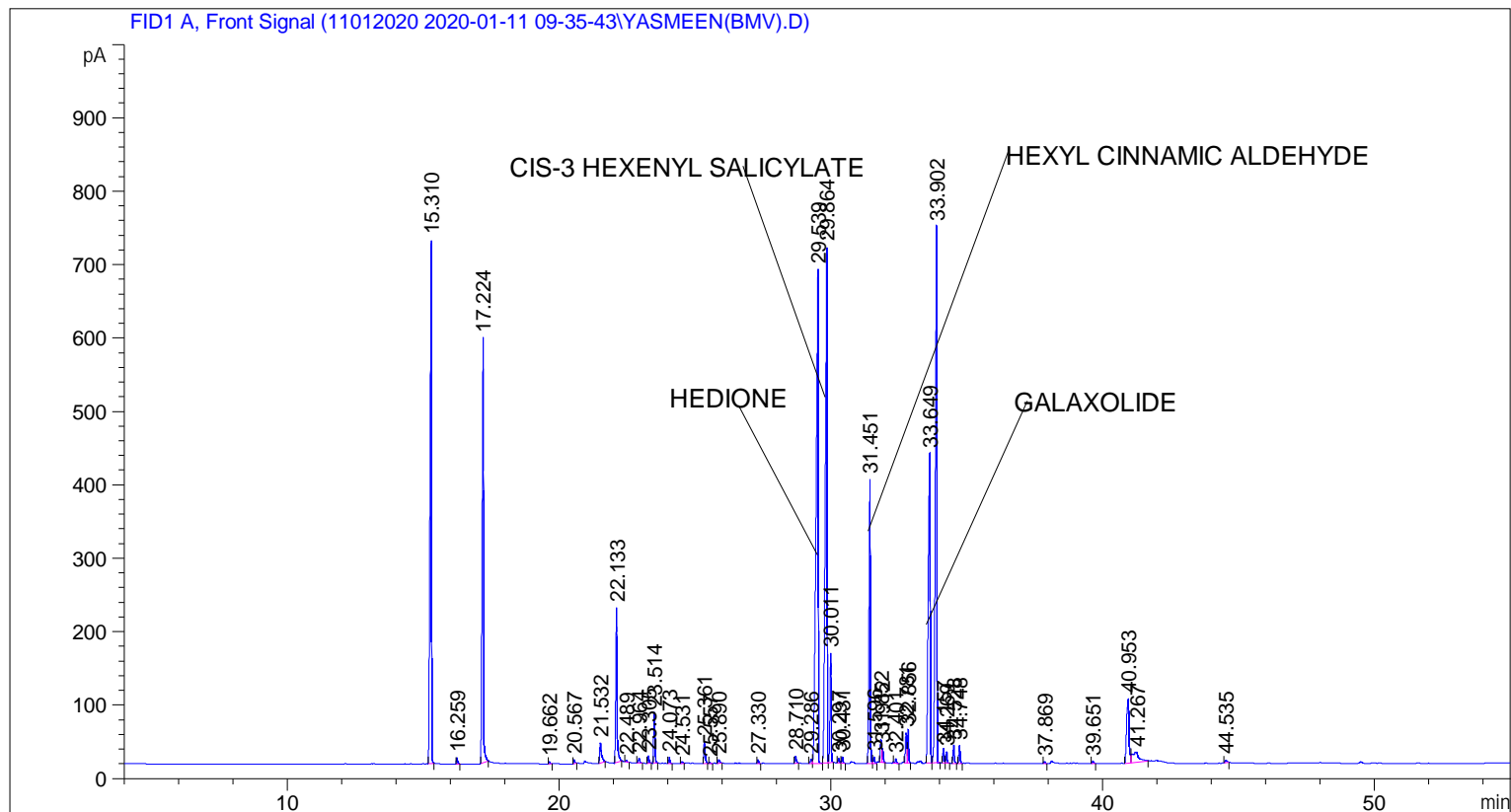


```
=====
Acq. Operator   : SYSTEM                               Seq. Line :    3
Acq. Instrument : BMV_NEW_GC_7820                     Location  : Vial 103
Injection Date  : 1/11/2020 11:31:48 AM                Inj       :    1
                                                    Inj Volume: 0.5 µl

Acq. Method    : C:\CHEM32\2\DATA\11012020 2020-01-11 09-35-43\UNIVERSAL BMV.M
Last changed   : 1/11/2020 9:35:51 AM by SYSTEM
Analysis Method : C:\CHEM32\2\DATA\11012020 2020-01-11 09-35-43\UNIVERSAL BMV.M (Sequence
Method)
Last changed   : 1/15/2020 9:53:38 AM by SYSTEM
                (modified after loading)
Additional Info : Peak(s) manually integrated
=====
```



=====
 Area Percent Report
 =====

```
Sorted By      :      Signal
Multiplier     :      1.0000
Dilution       :      1.0000
Do not use Multiplier & Dilution Factor with ISTDs
```

Signal 1: FID1 A, Front Signal

Peak #	RetTime [min]	Type	Width [min]	Area [pA*s]	Height [pA]	Area %
1	15.310	BB	0.0563	2709.69751	713.54797	12.31871
2	16.259	BB	0.0483	25.62836	8.01159	0.11651
3	17.224	BB	0.0569	2128.13574	579.32440	9.67484
4	19.662	BB	0.0453	8.74299	3.06631	0.03975
5	20.567	BB	0.0506	17.01283	5.01067	0.07734
6	21.532	BB	0.0660	128.13319	27.65931	0.58251

Sample Name: YASMEEN(BMV)

Peak #	RetTime [min]	Type	Width [min]	Area [pA*s]	Height [pA]	Area %
7	22.133	BB	0.0489	719.94440	210.71872	3.27298
8	22.489	BB	0.0414	6.69776	2.48517	0.03045
9	22.964	BB	0.0623	25.15286	6.20121	0.11435
10	23.305	BB	0.0462	29.85036	10.16812	0.13570
11	23.514	BB	0.0485	215.95677	68.94931	0.98177
12	24.073	BB	0.0469	26.19788	8.76897	0.11910
13	24.531	BB	0.0529	9.14260	2.60675	0.04156
14	25.361	BB	0.0560	107.88779	29.28260	0.49047
15	25.557	BB	0.0472	5.48166	1.86880	0.02492
16	25.890	BB	0.0625	20.41705	4.91336	0.09282
17	27.330	BB	0.0499	17.94290	5.52324	0.08157
18	28.710	BB	0.0578	40.49516	10.32132	0.18410
19	29.286	BV	0.0577	22.08045	5.89006	0.10038
20	29.539	VB	0.0743	3822.02051	672.73108	17.37550
21	29.864	BV	0.0620	3251.22144	702.88513	14.78056
22	30.011	VB	0.0474	465.37210	149.20311	2.11565
23	30.297	BV	0.0518	20.40881	6.13135	0.09278
24	30.431	VB	0.0491	27.06487	8.75549	0.12304
25	31.451	BB	0.0529	1358.93188	387.26282	6.17792
26	31.596	BB	0.0495	29.07958	8.80843	0.13220
27	31.852	BV	0.0535	112.32732	32.36338	0.51066
28	31.912	VB	0.0439	56.15179	19.30554	0.25527
29	32.401	BB	0.0540	22.89165	6.35156	0.10407
30	32.781	BV	0.0544	143.43417	41.46146	0.65207
31	32.856	VB	0.0481	145.94814	45.91655	0.66350
32	33.649	BV	0.0720	2166.37256	421.43344	9.84867
33	33.902	VB	0.0581	3013.32471	730.68878	13.69904
34	34.157	BV	0.0484	61.49763	19.69566	0.27958
35	34.269	VB	0.0473	47.58187	15.72498	0.21631
36	34.528	BB	0.0537	84.95969	24.98030	0.38624
37	34.748	BB	0.0490	79.60040	25.06598	0.36188
38	37.869	BB	0.0526	10.53757	3.10522	0.04791
39	39.651	BB	0.0583	11.60958	2.99295	0.05278
40	40.953	BV	0.0805	539.65747	88.04003	2.45337
41	41.267	VB	0.2119	242.53018	13.67668	1.10258
42	44.535	BB	0.0702	19.48345	3.84184	0.08857

Totals : 2.19966e4 5134.73963

=====
*** End of Report ***