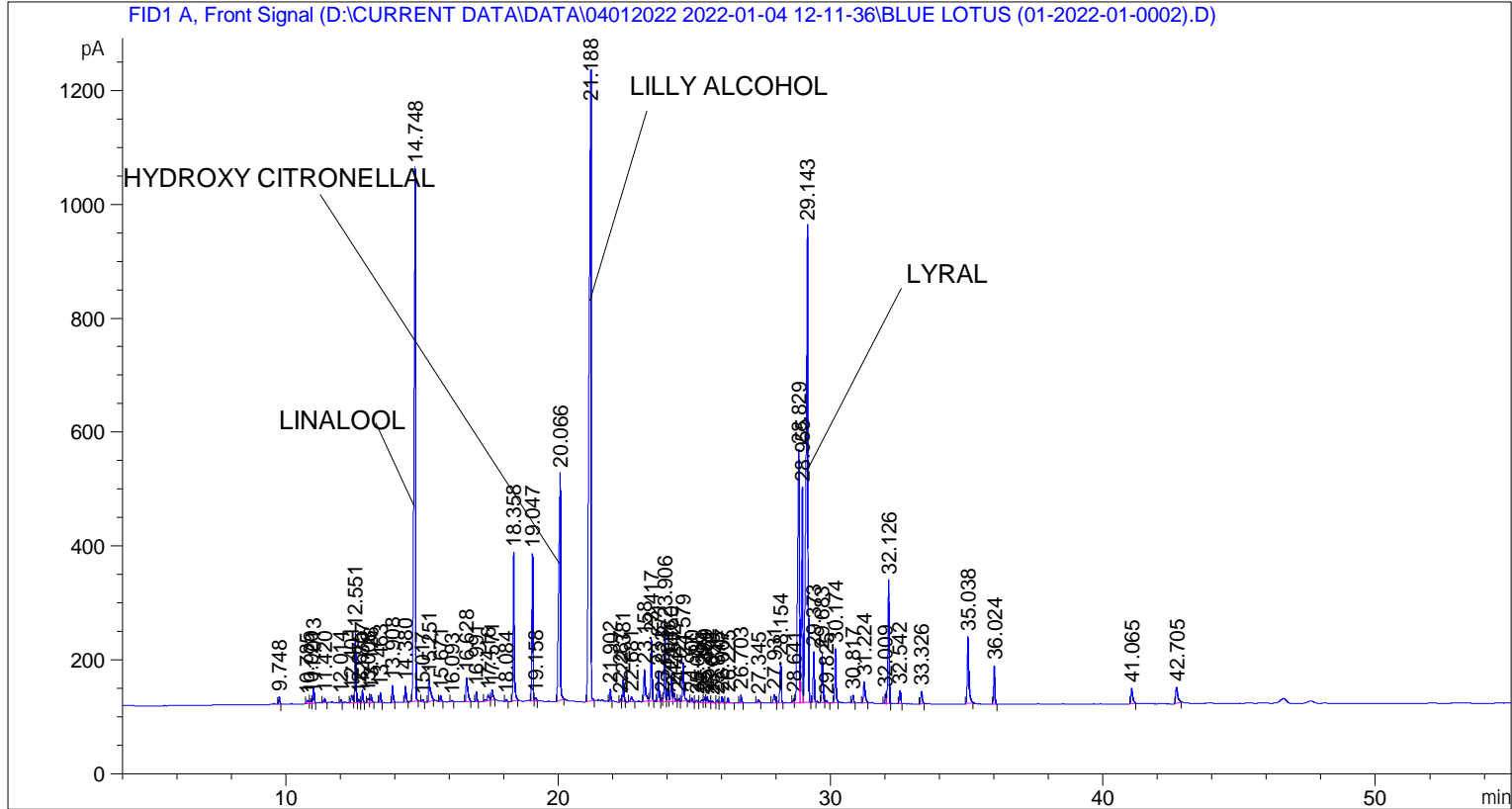


```

=====
Acq. Operator   : SYSTEM                               Seq. Line :    3
Acq. Instrument : BMV_NEW_GC_7820                     Location  : Vial 103
Injection Date  : 04-Jan-22 2:33:23 PM                 Inj       :    1
                                                    Inj Volume: 0.5 µl

Acq. Method    : D:\CURRENT DATA\DATA\04012022 2022-01-04 12-11-36\UNIVERSAL BMV.M
Last changed   : 04-Jan-22 12:11:36 PM by SYSTEM
Analysis Method : C:\CHEM32\2\METHODS\COOLING.M
Last changed   : 02-Mar-22 4:26:29 PM by SYSTEM
                (modified after loading)

Additional Info : Peak(s) manually integrated
  
```



=====
 Area Percent Report
 =====

```

Sorted By       :      Signal
Multiplier     :      1.0000
Dilution       :      1.0000
Do not use Multiplier & Dilution Factor with ISTDs
  
```

Signal 1: FID1 A, Front Signal

Peak #	RetTime [min]	Type	Width [min]	Area [pA*s]	Height [pA]	Area %
1	9.748	BB	0.0426	36.39219	13.43279	0.13079
2	10.785	BB	0.0675	28.35515	5.96082	0.10190
3	10.920	BV	0.0522	25.92416	7.17220	0.09317
4	11.013	VB	0.0432	84.68867	29.74495	0.30436
5	11.420	BB	0.0522	26.80833	7.41599	0.09634
6	12.014	BB	0.0415	16.24490	6.00808	0.05838
7	12.401	BV	0.0684	65.03615	12.99120	0.23373

Peak #	RetTime [min]	Type	Width [min]	Area [pA*s]	Height [pA]	Area %
8	12.551	VV	0.0431	339.31726	123.33459	1.21944
9	12.675	VV	0.0482	19.24492	6.03689	0.06916
10	12.807	VB	0.0423	64.10416	23.15372	0.23038
11	13.008	BV	0.0639	35.28486	7.78693	0.12681
12	13.126	VB	0.0517	47.38281	13.57027	0.17029
13	13.463	BB	0.0423	50.17387	18.11663	0.18032
14	13.908	BB	0.0450	91.84523	30.60468	0.33007
15	14.380	BB	0.0476	86.42973	27.54022	0.31061
16	14.748	BB	0.0593	3955.55371	935.62457	14.21554
17	15.017	BB	0.0428	11.34008	4.03818	0.04075
18	15.251	BB	0.0685	198.96278	40.38053	0.71504
19	15.671	BB	0.0454	33.19328	11.27316	0.11929
20	16.093	BB	0.0486	8.48003	2.63453	0.03048
21	16.628	BB	0.0638	192.93781	42.60479	0.69338
22	16.991	BB	0.0444	50.40328	17.58612	0.18114
23	17.416	BV	0.0776	63.97814	11.04372	0.22993
24	17.571	VB	0.0608	79.70806	19.07011	0.28646
25	18.084	BB	0.0438	10.91020	3.87807	0.03921
26	18.358	BB	0.0477	822.97687	261.33160	2.95763
27	19.047	BV	0.0452	735.18774	258.39917	2.64213
28	19.158	VB	0.0525	19.35672	5.57131	0.06956
29	20.066	BB	0.0650	1880.91296	399.12643	6.75966
30	21.188	BB	0.0725	5646.04590	1107.14148	20.29086
31	21.902	BB	0.0469	63.59827	21.27454	0.22856
32	22.287	BV	0.0429	14.29768	5.22904	0.05138
33	22.381	VB	0.0464	121.73578	40.12725	0.43750
34	22.681	BB	0.0735	44.68184	8.61828	0.16058
35	23.158	BV	0.0619	238.91142	57.02131	0.85860
36	23.417	VB	0.0496	351.29257	108.86048	1.26248
37	23.671	BV	0.0493	170.45146	53.36287	0.61257
38	23.823	VV	0.0352	14.01321	6.00477	0.05036
39	23.906	VV	0.0449	397.10519	136.65199	1.42712
40	24.018	VV	0.0481	75.84564	24.48223	0.27258
41	24.150	VV	0.0514	159.51691	47.23294	0.57327
42	24.242	VV	0.0648	69.43425	16.60571	0.24953
43	24.427	VV	0.0472	18.15241	6.01126	0.06524
44	24.579	VB	0.0524	236.22411	68.18240	0.84895
45	24.900	BB	0.0420	19.24432	7.24016	0.06916
46	25.086	BV	0.0660	18.13757	3.71539	0.06518
47	25.294	VV	0.0758	31.45043	5.57669	0.11303
48	25.380	VV	0.0452	29.61111	9.81886	0.10642
49	25.462	VV	0.0629	46.84369	10.74583	0.16835
50	25.650	VB	0.0579	11.31364	3.00447	0.04066
51	25.845	BV	0.0489	15.68898	4.96401	0.05638
52	26.007	VV	0.0481	33.10826	10.69818	0.11899
53	26.225	VB	0.0457	26.02939	9.00528	0.09354
54	26.703	BB	0.0477	43.55241	14.22345	0.15652
55	27.345	BB	0.0683	26.97405	5.90262	0.09694
56	27.931	BV	0.0812	71.03068	14.23268	0.25527
57	28.154	VB	0.0526	238.11304	71.90759	0.85573
58	28.641	BV	0.0494	23.92426	7.27788	0.08598
59	28.829	VV	0.0679	2169.72241	444.56720	7.79759
60	28.955	VV	0.0513	1273.64490	377.97131	4.57725
61	29.143	VB	0.0662	4027.25146	836.08533	14.47321

Peak #	RetTime [min]	Type	Width [min]	Area [pA*s]	Height [pA]	Area %
62	29.373	BB	0.0458	253.05498	87.24045	0.90943
63	29.683	BV	0.0552	306.54037	84.82101	1.10165
64	29.825	VB	0.0626	16.67242	4.17625	0.05992
65	30.174	BB	0.0492	311.46783	95.07388	1.11936
66	30.817	BB	0.0491	42.38345	13.34196	0.15232
67	31.224	BB	0.0637	165.61197	37.38552	0.59518
68	32.009	BV	0.0491	55.06983	17.33163	0.19791
69	32.126	VB	0.0514	716.85406	217.62210	2.57624
70	32.542	BB	0.0504	75.95390	23.67247	0.27296
71	33.326	BB	0.0586	88.31144	22.11629	0.31738
72	35.038	BB	0.0636	490.20273	117.60918	1.76170
73	36.024	BB	0.0502	216.00984	67.78270	0.77630
74	41.065	BB	0.0638	122.63088	27.07510	0.44071
75	42.705	BB	0.0818	156.72049	28.22207	0.56322

Totals : 2.78256e4 6732.64634

=====
*** End of Report ***