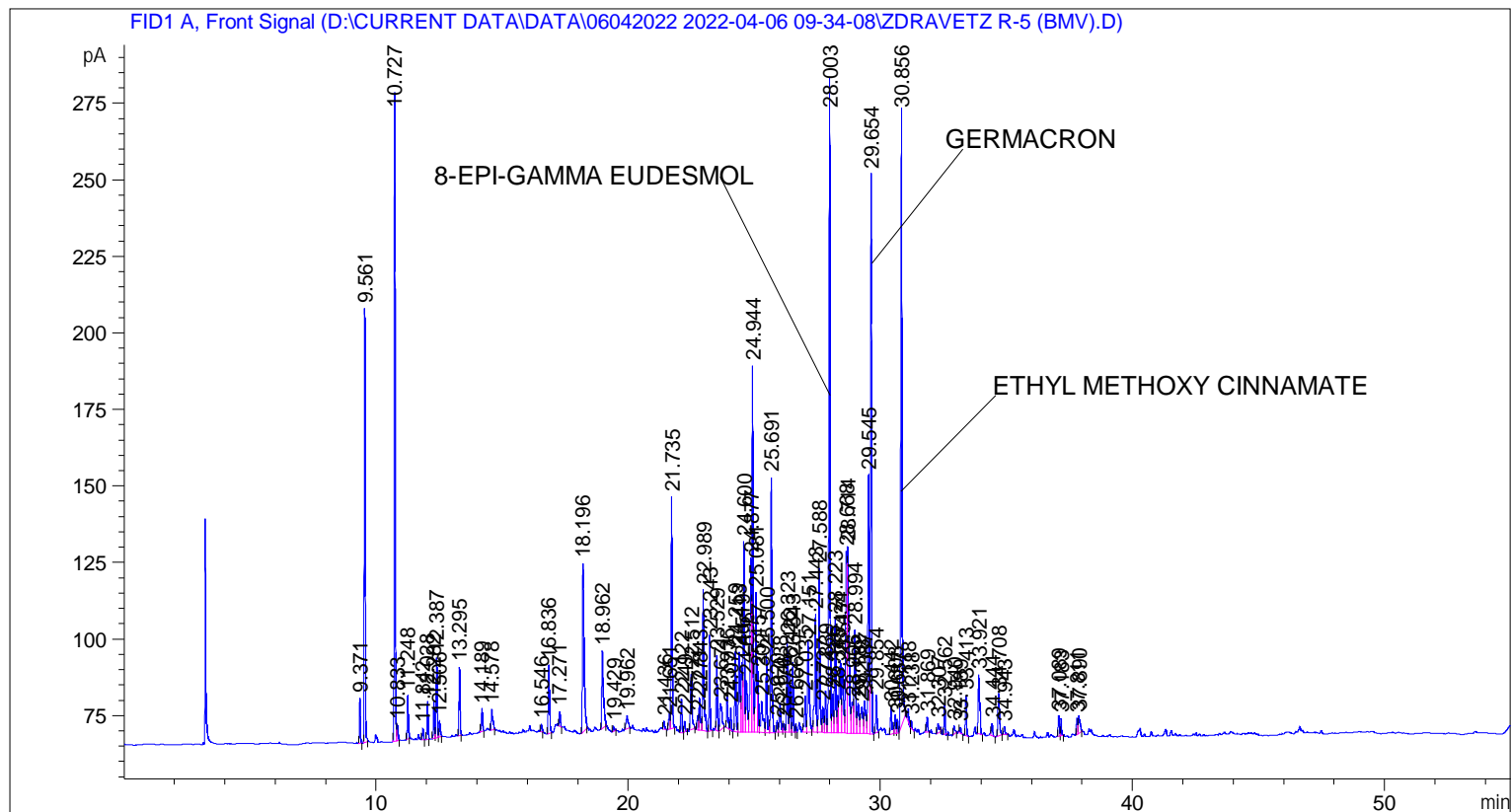


```

=====
Acq. Operator   : SYSTEM                               Seq. Line :    5
Acq. Instrument : BMV_NEW_GC_7820                     Location  : Vial 105
Injection Date  : 06-Apr-22 2:11:48 PM                 Inj       :    1
                                                    Inj Volume: 0.5 µl

Acq. Method    : D:\CURRENT DATA\DATA\06042022 2022-04-06 09-34-08\UNIVERSAL BMV.M
Last changed   : 06-Apr-22 9:34:19 AM by SYSTEM
Analysis Method: C:\CHEM32\2\METHODS\COOLING.M
Last changed   : 14-May-22 11:46:48 AM by SYSTEM
                (modified after loading)

Additional Info : Peak(s) manually integrated
  
```



=====
 Area Percent Report
 =====

```

Sorted By      :      Signal
Multiplier     :      1.0000
Dilution      :      1.0000
Do not use Multiplier & Dilution Factor with ISTDs
  
```

Signal 1: FID1 A, Front Signal

Peak #	RetTime [min]	Type	Width [min]	Area [pA*s]	Height [pA]	Area %
1	9.371	BB	0.0404	38.25182	14.69445	0.39831
2	9.561	BB	0.0415	381.47552	141.50360	3.97223
3	10.727	BV	0.0428	578.59686	211.94081	6.02481
4	10.833	VB	0.0502	17.45611	5.33782	0.18177
5	11.248	BB	0.0435	41.12275	14.32358	0.42820
6	11.842	BB	0.0439	10.25513	3.63780	0.10678
7	12.028	BB	0.0435	34.79658	12.49214	0.36233

Sample Name: ZDRAVETZ R-5 (BMV)

Peak #	RetTime [min]	Type	Width [min]	Area [pA*s]	Height [pA]	Area %
8	12.282	BV	0.0442	33.99243	11.96288	0.35396
9	12.387	VV	0.0472	81.23766	26.21475	0.84591
10	12.506	VB	0.0497	18.73936	5.64498	0.19513
11	13.295	BB	0.0452	65.43497	22.34943	0.68136
12	14.189	BB	0.0471	23.27992	7.51843	0.24241
13	14.578	BB	0.0612	29.46267	6.71966	0.30679
14	16.546	BB	0.0475	8.39881	2.61392	0.08746
15	16.836	BB	0.0518	78.03037	22.31778	0.81251
16	17.271	BB	0.0476	15.31226	4.88321	0.15944
17	18.196	BB	0.0648	258.77863	55.11771	2.69461
18	18.962	BB	0.0667	116.54978	25.31512	1.21361
19	19.429	BB	0.0427	4.83246	1.78087	0.05032
20	19.962	BB	0.0792	24.37151	4.36062	0.25378
21	21.436	BB	0.0543	9.78798	2.70143	0.10192
22	21.651	BV	0.0500	17.63174	5.14884	0.18360
23	21.735	VB	0.0484	241.95293	75.56470	2.51941
24	22.122	BV	0.0530	36.33305	10.87020	0.37833
25	22.249	VB	0.0421	9.30813	3.49581	0.09692
26	22.512	BB	0.0643	78.36100	18.15838	0.81596
27	22.771	BV	0.0478	14.32584	4.66574	0.14917
28	22.843	VV	0.0552	39.80254	10.74753	0.41446
29	22.989	VB	0.0556	168.51289	46.13881	1.75469
30	23.243	BB	0.0484	94.76853	31.25359	0.98681
31	23.529	BV	0.0526	83.11502	24.48171	0.86546
32	23.671	VB	0.0794	50.83157	8.67515	0.52930
33	23.936	BV	0.0531	37.89196	10.50224	0.39456
34	24.077	VB	0.0485	22.65320	7.24931	0.23588
35	24.259	BV	0.0520	90.23386	26.28560	0.93959
36	24.413	VV	0.0632	107.75878	26.10679	1.12207
37	24.519	VV	0.0479	76.31621	22.87527	0.79467
38	24.600	VV	0.0552	220.01965	62.28581	2.29102
39	24.696	VV	0.0684	82.07600	16.96294	0.85464
40	24.877	VV	0.0490	190.82921	57.03804	1.98707
41	24.944	VV	0.0472	371.51382	119.61196	3.86850
42	25.081	VV	0.0542	164.86813	45.60980	1.71674
43	25.157	VV	0.0479	61.00854	19.82502	0.63527
44	25.302	VV	0.0831	62.19797	10.21015	0.64766
45	25.500	VB	0.0491	80.72740	25.41281	0.84060
46	25.691	BB	0.0521	286.95251	83.44736	2.98798
47	25.920	BV	0.0476	11.90408	3.89701	0.12395
48	26.038	VB	0.0670	43.69300	9.62522	0.45497
49	26.176	BV	0.0541	11.01528	2.78732	0.11470
50	26.323	VV	0.0498	98.81764	30.51328	1.02897
51	26.422	VV	0.0502	59.56799	18.65726	0.62027
52	26.543	VB	0.0467	68.22685	22.96356	0.71043
53	26.666	BV	0.0466	7.81298	2.79379	0.08136
54	27.035	BV	0.0545	43.54922	11.68372	0.45347
55	27.151	VB	0.0675	138.89053	29.73776	1.44624
56	27.443	BV	0.0595	156.38260	38.43280	1.62838
57	27.588	VV	0.0520	183.88947	53.65592	1.91480
58	27.727	VV	0.0621	35.46619	8.60716	0.36930
59	27.839	VV	0.0577	50.49353	13.48515	0.52578
60	28.003	VV	0.0491	717.19720	214.11542	7.46803
61	28.126	VV	0.0545	46.28120	12.70671	0.48192

Sample Name: ZDRAVETZ R-5 (BMV)

Peak #	RetTime [min]	Type	Width [min]	Area [pA*s]	Height [pA]	Area %
62	28.223	VV	0.0520	128.00734	37.36860	1.33292
63	28.315	VV	0.0511	40.88993	12.20136	0.42578
64	28.434	VV	0.0739	123.59795	23.68616	1.28700
65	28.517	VV	0.0661	98.52468	21.23723	1.02592
66	28.668	VV	0.0526	200.97369	59.27966	2.09270
67	28.714	VV	0.0650	308.11346	60.88905	3.20832
68	28.905	VV	0.0657	51.87891	10.30262	0.54020
69	28.994	VV	0.0634	148.98196	33.79110	1.55132
70	29.132	VV	0.0700	49.78260	9.84012	0.51838
71	29.273	VV	0.0780	51.24504	8.66501	0.53360
72	29.387	VV	0.0774	60.45390	10.78730	0.62949
73	29.545	VV	0.0478	266.98056	84.57072	2.78002
74	29.654	VB	0.0506	589.67871	182.77213	6.14021
75	29.854	BB	0.0571	44.13269	12.21874	0.45954
76	30.442	BB	0.0607	34.39911	8.59329	0.35819
77	30.603	BV	0.0506	20.41579	6.16835	0.21259
78	30.687	VV	0.0478	14.46835	4.59060	0.15066
79	30.856	VB	0.0569	737.89221	200.55272	7.68353
80	31.118	BV	0.0535	15.58942	4.38576	0.16233
81	31.238	VB	0.0451	7.74408	2.72626	0.08064
82	31.869	BB	0.0499	16.31290	5.02179	0.16986
83	32.307	BB	0.0711	14.88810	3.09557	0.15503
84	32.562	BB	0.0485	29.15933	9.84931	0.30363
85	32.940	BB	0.0521	9.98458	2.90193	0.10397
86	33.189	BB	0.0479	5.85155	1.90233	0.06093
87	33.413	BB	0.0513	42.97791	13.08495	0.44752
88	33.921	BB	0.0608	85.60727	19.28268	0.89141
89	34.444	BB	0.0617	16.41218	4.09584	0.17090
90	34.708	BB	0.0657	59.69716	13.72358	0.62161
91	34.943	BB	0.0551	8.77024	2.54921	0.09132
92	37.089	BV	0.0463	20.75639	6.67660	0.21613
93	37.183	VB	0.0484	18.40836	5.74782	0.19168
94	37.811	BV	0.0508	18.38050	5.38911	0.19139
95	37.890	VB	0.0699	29.26380	5.79238	0.30472

Totals : 9603.56251 2743.45649

=====
*** End of Report ***