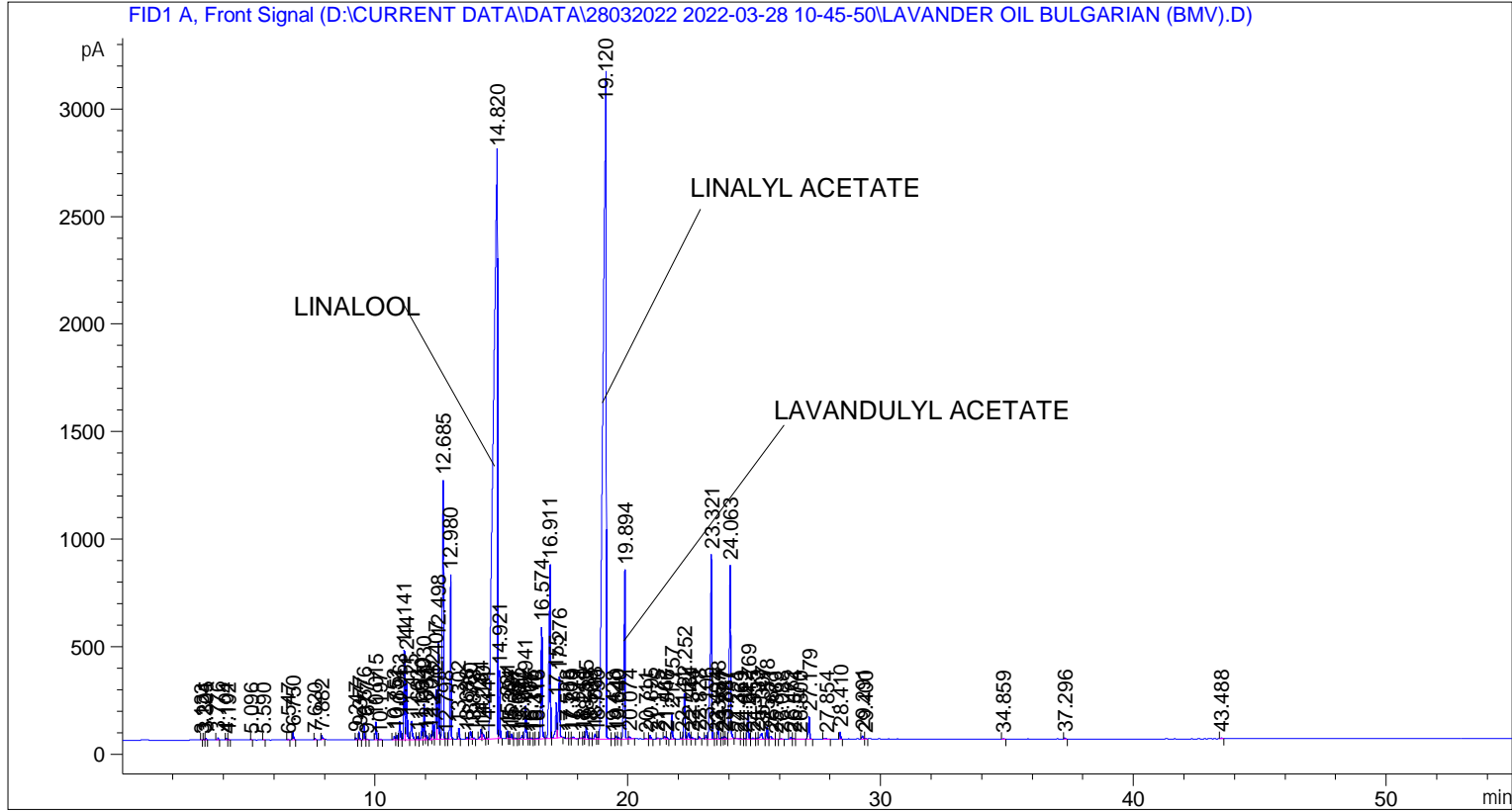


```
=====
Acq. Operator   : SYSTEM                               Seq. Line :    5
Acq. Instrument : BMV_NEW_GC_7820                     Location  : Vial 105
Injection Date  : 28-Mar-22 3:23:26 PM                 Inj       :    1
                                                    Inj Volume: 0.5 µl

Acq. Method     : D:\CURRENT DATA\DATA\28032022 2022-03-28 10-45-50\UNIVERSAL BMV.M
Last changed    : 28-Mar-22 10:46:01 AM by SYSTEM
Analysis Method : C:\CHEM32\2\METHODS\COOLING.M
Last changed    : 18-Apr-22 11:39:08 AM by SYSTEM
                (modified after loading)
=====
```



=====  
 Area Percent Report  
 =====

```
Sorted By      :      Signal
Multiplier     :      1.0000
Dilution       :      1.0000
Do not use Multiplier & Dilution Factor with ISTDs
```

Signal 1: FID1 A, Front Signal

Peak #	RetTime [min]	Type	Width [min]	Area [pA*s]	Height [pA]	Area %
1	3.133	BB	0.0305	5.24387	2.49444	0.00576
2	3.224	BB	0.0287	9.78211	5.02045	0.01074
3	3.305	BB	0.0282	14.76453	7.76716	0.01622
4	3.776	BB	0.0318	20.40486	8.88978	0.02241
5	4.104	BV	0.0322	16.65143	7.42477	0.01829
6	4.192	VB	0.0391	7.79934	2.83328	0.00857
7	5.096	BB	0.0344	6.97516	3.08028	0.00766
8	5.590	BB	0.0385	7.77746	3.07724	0.00854

Peak #	RetTime [min]	Type	Width [min]	Area [pA*s]	Height [pA]	Area %
9	6.547	BB	0.0396	11.91540	4.54356	0.01309
10	6.750	BB	0.0403	106.63519	38.50247	0.11713
11	7.620	BB	0.0463	19.20218	5.84790	0.02109
12	7.882	BB	0.0502	79.60007	21.99595	0.08744
13	9.247	BB	0.0409	26.03788	9.82687	0.02860
14	9.377	BB	0.0412	99.98952	37.39965	0.10983
15	9.576	BV	0.0429	219.85651	80.52924	0.24150
16	9.677	VB	0.0449	7.54416	2.45281	0.00829
17	10.015	BB	0.0442	233.50212	82.13377	0.25649
18	10.197	BB	0.0501	14.48443	4.55215	0.01591
19	10.752	BV	0.0468	57.06582	17.60973	0.06268
20	10.851	VV	0.0470	64.94531	21.61898	0.07134
21	10.963	VV	0.0496	270.87109	84.10313	0.29753
22	11.141	VV	0.0446	1164.91260	416.50461	1.27957
23	11.244	VV	0.0438	745.83051	257.46667	0.81924
24	11.425	VB	0.0672	368.31055	85.67804	0.40456
25	11.663	BB	0.0461	40.01486	13.28442	0.04395
26	11.840	BV	0.0462	200.44177	66.42352	0.22017
27	11.930	VV	0.0455	489.00589	165.46161	0.53714
28	12.031	VB	0.0449	53.55590	17.89093	0.05883
29	12.204	BV	0.0426	61.16472	22.58655	0.06719
30	12.282	VV	0.0455	250.11351	84.47903	0.27473
31	12.407	VV	0.0527	776.14819	234.23775	0.85254
32	12.498	VV	0.0447	1303.40466	451.06293	1.43170
33	12.685	VV	0.0494	4065.16675	1202.63525	4.46530
34	12.798	VV	0.0548	12.13640	3.31024	0.01333
35	12.980	VB	0.0442	2165.78735	762.08716	2.37897
36	13.302	BB	0.0418	132.26509	50.04280	0.14528
37	13.636	BV	0.0521	39.17337	11.39220	0.04303
38	13.760	VV	0.0591	153.59117	38.04624	0.16871
39	13.878	VB	0.0523	26.44053	7.46152	0.02904
40	14.184	BV	0.0502	160.49754	47.79775	0.17630
41	14.240	VB	0.0772	125.73737	25.22291	0.13811
42	14.441	BV	0.0458	20.47171	6.49690	0.02249
43	14.820	VV	0.1315	2.90798e4	2725.25586	31.94213
44	14.921	VB	0.0393	802.51208	319.48578	0.88150
45	15.231	BV	0.0410	94.55779	35.57034	0.10387
46	15.304	VV	0.0375	18.54722	7.10462	0.02037
47	15.387	VB	0.0507	77.49821	22.79799	0.08513
48	15.531	BB	0.0528	15.36202	4.08740	0.01687
49	15.687	BV	0.0362	8.73916	3.74273	0.00960
50	15.802	VV	0.0518	64.63559	18.03665	0.07100
51	15.941	VB	0.0482	511.65924	156.16554	0.56202
52	16.107	BV	0.0506	18.68564	5.51173	0.02052
53	16.175	VB	0.0456	19.26409	6.49571	0.02116
54	16.310	BV	0.0430	9.81906	3.37005	0.01079
55	16.416	VV	0.0773	21.02921	3.75440	0.02310
56	16.574	VV	0.0551	1829.88391	519.10651	2.01000
57	16.911	VV	0.0537	3168.69897	808.72754	3.48059
58	17.155	VV	0.0558	634.49573	165.24696	0.69695
59	17.276	VB	0.0615	1131.56458	284.17673	1.24294
60	17.588	BV	0.0415	5.64633	2.09152	0.00620
61	17.708	VV	0.0471	8.74403	2.99012	0.00960
62	17.819	VB	0.0467	25.51304	8.34758	0.02802

Sample Name: LAVANDER OIL BULGARIAN (BMV)

Peak #	RetTime [min]	Type	Width [min]	Area [pA*s]	Height [pA]	Area %
63	18.144	BV	0.0524	15.98937	4.39718	0.01756
64	18.250	VV	0.0450	39.34433	13.51553	0.04322
65	18.335	VV	0.0597	223.24780	54.64190	0.24522
66	18.508	VV	0.0492	15.96561	4.75177	0.01754
67	18.688	VV	0.0662	100.55991	23.86693	0.11046
68	18.790	VV	0.0556	35.40489	8.67434	0.03889
69	19.120	VB	0.1102	2.66012e4	3097.56494	29.21956
70	19.428	BV	0.0721	16.56732	3.11316	0.01820
71	19.540	VV	0.0501	50.43696	15.44610	0.05540
72	19.640	VV	0.0508	29.40538	8.41510	0.03230
73	19.894	VB	0.0550	2813.78418	781.89771	3.09074
74	20.074	BB	0.0816	56.26476	9.70817	0.06180
75	20.711	BB	0.0535	10.62671	2.98668	0.01167
76	20.895	BB	0.0499	51.50160	15.84901	0.05657
77	21.175	BB	0.0502	22.87346	6.64146	0.02512
78	21.467	BV	0.0583	38.47909	9.91432	0.04227
79	21.546	VB	0.0513	29.65264	8.58903	0.03257
80	21.757	BB	0.0464	345.70160	117.10107	0.37973
81	22.141	BV	0.0479	17.52284	5.38730	0.01925
82	22.252	VV	0.0487	677.74017	209.90520	0.74445
83	22.431	VV	0.0605	124.14310	28.66480	0.13636
84	22.544	VB	0.0831	42.16016	7.67117	0.04631
85	22.828	BB	0.0460	35.09822	11.69047	0.03855
86	23.106	BV	0.0480	47.98362	16.01261	0.05271
87	23.321	VB	0.0627	3649.58325	857.23322	4.00881
88	23.494	BV	0.0381	6.64251	2.66034	0.00730
89	23.578	VB	0.0466	150.31764	50.65086	0.16511
90	23.747	BV	0.0455	28.70697	9.42492	0.03153
91	23.827	VV	0.0464	36.36238	11.65472	0.03994
92	23.887	VV	0.0438	26.47898	9.14351	0.02909
93	24.063	VB	0.0506	2869.88062	804.38751	3.15236
94	24.321	BB	0.0644	15.46274	3.50800	0.01698
95	24.469	BB	0.0385	6.86514	3.02274	0.00754
96	24.622	BV	0.0480	7.06360	2.35543	0.00776
97	24.769	VV	0.0496	423.63455	128.00407	0.46533
98	24.955	VV	0.0731	32.38255	5.89081	0.03557
99	25.133	VV	0.0521	22.56738	6.40949	0.02479
100	25.307	VV	0.0847	168.20462	26.61642	0.18476
101	25.518	VV	0.0473	178.42352	59.01947	0.19599
102	25.671	VV	0.0879	88.80714	13.13040	0.09755
103	25.869	VB	0.0446	3.99012	1.47383	0.00438
104	26.088	BB	0.0532	10.38547	3.08792	0.01141
105	26.462	BV	0.0529	30.01860	8.55409	0.03297
106	26.574	VV	0.0550	14.12973	4.22982	0.01552
107	26.800	VB	0.1334	24.19426	2.28787	0.02658
108	27.179	BB	0.0530	385.63538	107.20478	0.42359
109	27.854	BB	0.0814	25.67625	4.31366	0.02820
110	28.410	BB	0.0461	102.72021	33.23262	0.11283
111	29.291	BV	0.0515	41.67011	12.29846	0.04577
112	29.400	VB	0.0530	8.61658	2.28218	0.00946
113	34.859	BB	0.0537	8.40083	2.34881	0.00923
114	37.296	BB	0.0526	15.11134	4.45215	0.01660
115	43.488	BB	0.0548	13.56809	3.97696	0.01490

Sample Name: LAVANDER OIL BULGARIAN (BMV)

Totals : 9.10391e4 1.61726e4

=====

\*\*\* End of Report \*\*\*