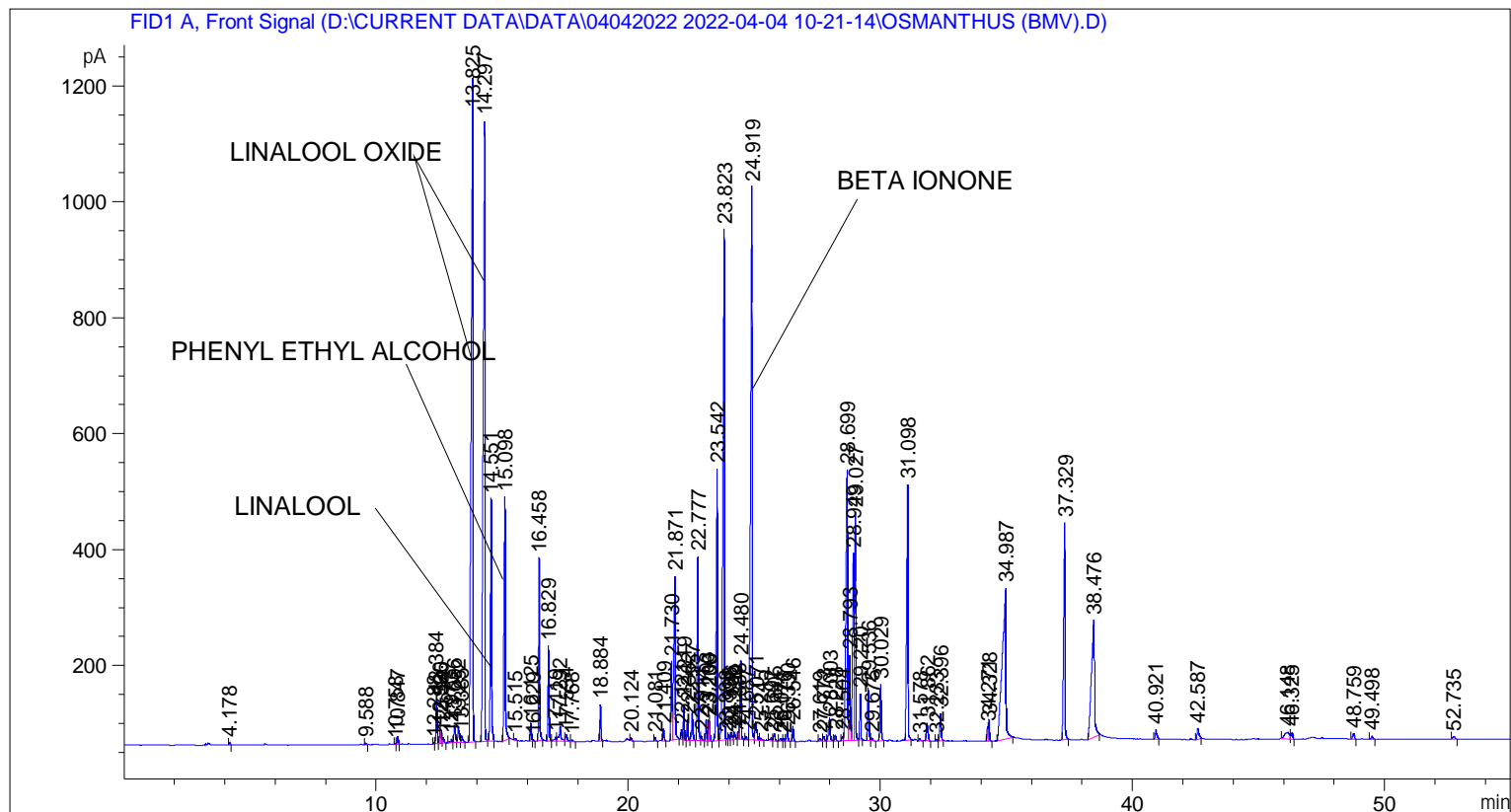


```

=====
Acq. Operator   : SYSTEM                               Seq. Line :    4
Acq. Instrument : BMV_NEW_GC_7820                     Location  : Vial 104
Injection Date  : 04-Apr-22 1:51:55 PM                 Inj       :    1
                                                    Inj Volume: 0.5 µl

Acq. Method    : D:\CURRENT DATA\DATA\04042022 2022-04-04 10-21-14\UNIVERSAL BMV.M
Last changed   : 04-Apr-22 10:21:14 AM by SYSTEM
Analysis Method : C:\CHEM32\2\METHODS\COOLING.M
Last changed   : 07-Apr-22 12:19:14 PM by SYSTEM
                (modified after loading)
  
```



=====  
 Area Percent Report  
 =====

```

Sorted By      : Signal
Multiplier     : 1.0000
Dilution      : 1.0000
Do not use Multiplier & Dilution Factor with ISTDs
  
```

Signal 1: FID1 A, Front Signal

Peak #	RetTime [min]	Type	Width [min]	Area [pA*s]	Height [pA]	Area %
1	4.178	BB	0.0399	10.34210	3.90240	0.02274
2	9.588	BB	0.0463	8.56518	2.83315	0.01883
3	10.758	BV	0.0411	5.18055	1.94498	0.01139
4	10.847	VB	0.0458	40.20161	13.48937	0.08839
5	12.288	BV	0.0414	7.75883	2.97486	0.01706
6	12.384	VV	0.0458	230.95367	77.35766	0.50779
7	12.520	VV	0.0401	62.15973	24.13036	0.13667
8	12.565	VV	0.0466	75.74751	23.47300	0.16654

Sample Name: OSMANTHUS (BMV)

Peak #	RetTime [min]	Type	Width [min]	Area [pA*s]	Height [pA]	Area %
9	12.654	VB	0.0505	34.43371	9.67723	0.07571
10	12.973	BV	0.0575	22.32512	5.48147	0.04909
11	13.096	VV	0.0568	117.35210	29.22495	0.25802
12	13.252	VV	0.0612	118.20184	27.44635	0.25989
13	13.385	VB	0.0532	43.98796	11.59894	0.09672
14	13.825	BB	0.0665	5744.21436	1145.25183	12.62964
15	14.297	BB	0.0623	5170.66943	1071.88892	11.36860
16	14.551	BB	0.0478	1353.76880	418.01453	2.97649
17	15.098	BB	0.0511	1553.32214	420.34381	3.41525
18	15.515	BB	0.0451	10.15354	3.47180	0.02232
19	16.125	BV	0.0444	89.92873	31.38330	0.19772
20	16.229	VB	0.0482	7.89121	2.41272	0.01735
21	16.458	BB	0.0451	918.44019	314.13339	2.01935
22	16.829	BB	0.0440	462.16177	163.61740	1.01614
23	17.119	BV	0.0679	35.82564	7.47332	0.07877
24	17.292	VB	0.0779	146.69351	25.95770	0.32253
25	17.534	BB	0.0673	54.44335	11.70238	0.11970
26	17.768	BB	0.0504	10.38471	3.15099	0.02283
27	18.884	BB	0.0465	184.35963	62.32946	0.40535
28	20.124	BB	0.0483	16.82549	5.40370	0.03699
29	21.081	BB	0.0493	22.10945	7.11175	0.04861
30	21.409	BB	0.0490	70.16266	21.53165	0.15426
31	21.730	BV	0.0484	424.29822	136.01849	0.93289
32	21.871	VB	0.0618	1298.38965	281.61862	2.85473
33	22.121	BV	0.0445	47.90086	16.67623	0.10532
34	22.219	VB	0.0428	166.55185	61.12601	0.36619
35	22.362	BB	0.0475	108.31268	35.61744	0.23814
36	22.557	BB	0.0545	185.07169	50.82104	0.40691
37	22.777	BV	0.0493	1013.64557	317.30984	2.22867
38	22.914	VV	0.0504	29.14322	8.61945	0.06408
39	23.103	VV	0.0463	106.45865	36.22742	0.23407
40	23.209	VV	0.0415	93.43580	34.62050	0.20543
41	23.236	VB	0.0418	89.32442	33.88836	0.19640
42	23.542	BV	0.0507	1554.74683	468.45596	3.41838
43	23.823	VV	0.0591	3850.26074	879.79968	8.46546
44	23.888	VB	0.0428	9.97985	3.34229	0.02194
45	23.998	BV	0.0476	27.70935	8.82642	0.06092
46	24.106	VV	0.0570	49.03277	12.71292	0.10781
47	24.230	VV	0.0648	53.00699	12.16737	0.11654
48	24.388	VV	0.0386	36.82275	14.52534	0.08096
49	24.480	VB	0.0522	453.10388	134.91220	0.99623
50	24.687	BV	0.0490	21.00063	6.44956	0.04617
51	24.919	VV	0.0595	4046.80884	954.30493	8.89760
52	25.071	VV	0.0713	165.15823	32.47367	0.36313
53	25.245	VB	0.0610	17.11845	4.25273	0.03764
54	25.692	BV	0.0687	26.48947	5.54718	0.05824
55	25.805	VB	0.0620	53.62606	12.52403	0.11791
56	26.071	BV	0.0664	24.49546	5.25297	0.05386
57	26.176	VV	0.0491	14.85211	4.80078	0.03265
58	26.330	VB	0.0544	69.96561	19.23922	0.15383
59	26.546	BB	0.0494	82.08824	26.28499	0.18049
60	27.619	BV	0.0691	24.14516	4.84872	0.05309
61	27.773	VV	0.0668	37.83924	8.69315	0.08320
62	28.003	VB	0.0701	183.78590	40.37651	0.40408

Sample Name: OSMANTHUS (BMV)

Peak #	RetTime [min]	Type	Width [min]	Area [pA*s]	Height [pA]	Area %
63	28.228	BB	0.0522	37.44440	10.87166	0.08233
64	28.504	BV	0.0496	26.75118	8.29494	0.05882
65	28.699	VV	0.0691	2208.14111	467.47400	4.85498
66	28.793	VV	0.0459	451.87918	146.78540	0.99353
67	28.949	VV	0.0512	1198.79297	323.74329	2.63575
68	29.027	VB	0.0485	1293.95679	392.61597	2.84499
69	29.220	BB	0.0441	231.63132	79.31232	0.50928
70	29.536	BV	0.0528	315.62949	90.27600	0.69397
71	29.675	VB	0.0548	17.22387	4.80779	0.03787
72	30.029	BB	0.0498	323.96338	97.49335	0.71229
73	31.098	BB	0.0553	1672.12280	440.36606	3.67645
74	31.578	BB	0.0500	12.12376	3.72537	0.02666
75	31.862	BB	0.0622	135.83620	31.57554	0.29866
76	32.233	BV	0.0501	10.38494	3.35989	0.02283
77	32.396	VB	0.0556	171.21863	46.90238	0.37645
78	34.271	BV	0.0461	74.73360	24.81471	0.16431
79	34.328	VB	0.0481	121.87852	37.27206	0.26797
80	34.987	BB	0.1265	2704.08325	259.62158	5.94539
81	37.329	BB	0.0542	1483.92407	374.65836	3.26266
82	38.476	BB	0.0965	1528.75659	201.63860	3.36123
83	40.921	BB	0.0670	75.14771	16.24714	0.16523
84	42.587	BB	0.0776	100.02106	18.95631	0.21991
85	46.148	BV	0.1669	158.24023	11.26716	0.34792
86	46.325	VB	0.0590	44.56092	11.55082	0.09797
87	48.759	BB	0.0670	43.75978	9.81000	0.09621
88	49.498	BB	0.0723	23.37762	4.93218	0.05140
89	52.735	BB	0.0825	23.29254	3.74736	0.05121

Totals : 4.54820e4 1.07432e4

=====  
\*\*\* End of Report \*\*\*