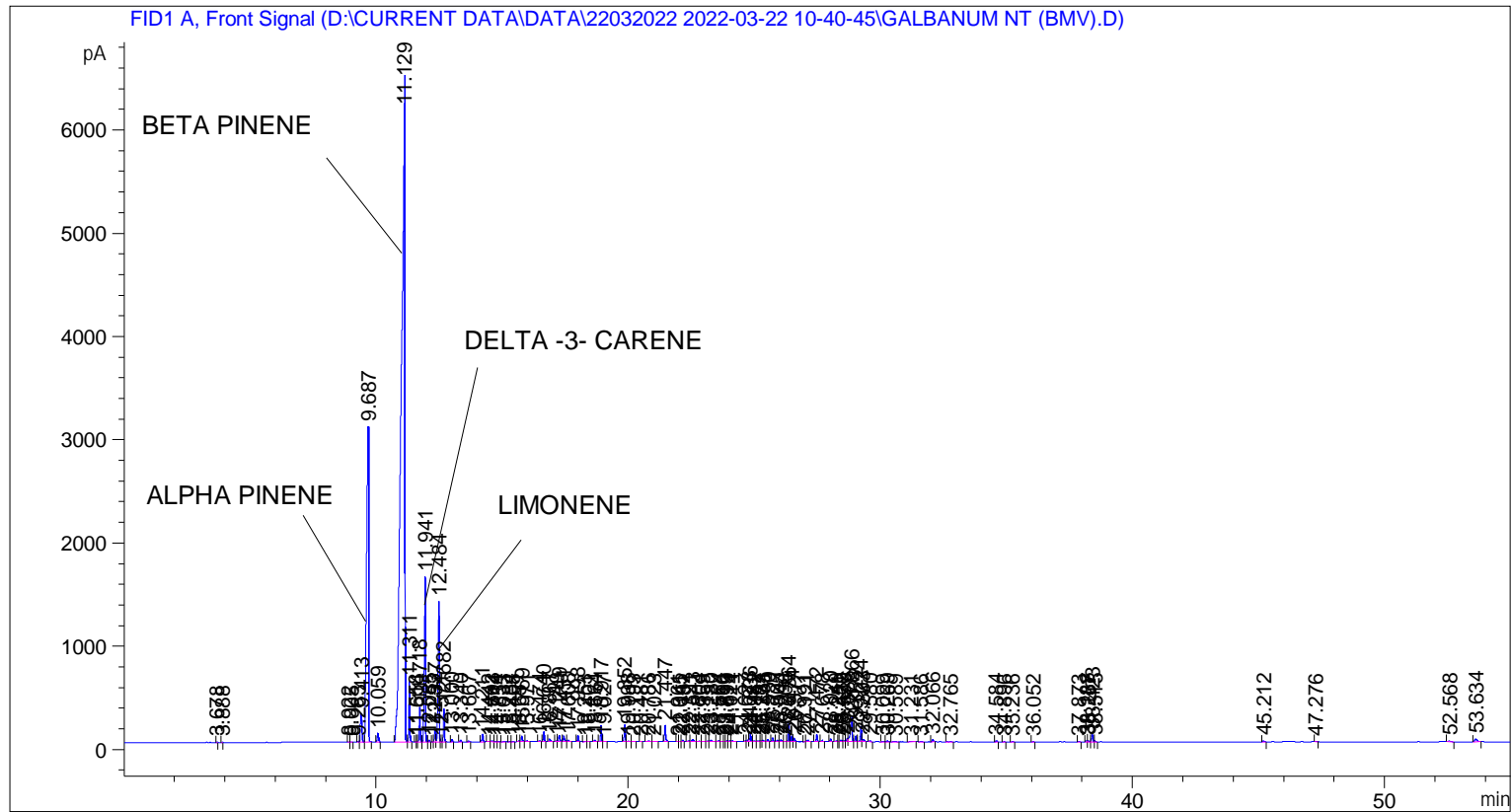


```

=====
Acq. Operator   : SYSTEM                               Seq. Line :    2
Acq. Instrument : BMV_NEW_GC_7820                     Location  : Vial 102
Injection Date  : 22-Mar-22 11:58:34 AM                Inj       :    1
                                                    Inj Volume: 0.5 µl

Acq. Method    : D:\CURRENT DATA\DATA\22032022 2022-03-22 10-40-45\UNIVERSAL BMV.M
Last changed   : 22-Mar-22 10:40:56 AM by SYSTEM
Analysis Method : C:\CHEM32\2\METHODS\COOLING.M
Last changed   : 05-Nov-20 11:10:00 AM by SYSTEM
  
```



=====
 Area Percent Report
 =====

```

Sorted By       : Signal
Multiplier      : 1.0000
Dilution       : 1.0000
Do not use Multiplier & Dilution Factor with ISTDs
  
```

Signal 1: FID1 A, Front Signal

Peak #	RetTime [min]	Type	Width [min]	Area [pA*s]	Height [pA]	Area %
1	3.678	BB	0.0229	7.22084	4.71657	0.00700
2	3.888	BB	0.0252	6.77602	4.11278	0.00657
3	8.922	BV	0.0496	9.29407	3.04212	0.00901
4	9.005	VB	0.0458	5.50320	1.90045	0.00533
5	9.283	BV	0.0498	24.83497	8.08900	0.02406
6	9.413	VV	0.0707	1184.23071	278.02582	1.14741
7	9.687	VB	0.0590	1.36202e4	3053.07031	13.19668
8	10.059	BB	0.0576	300.94482	82.32635	0.29159
9	11.129	BV	0.1274	6.44563e4	6404.56152	62.45194

Sample Name: GALBANUM NT (BMV)

Peak #	RetTime [min]	Type	Width [min]	Area [pA*s]	Height [pA]	Area %
10	11.311	VB	0.0398	1498.12720	585.65479	1.45154
11	11.558	BV	0.0375	12.02681	4.91771	0.01165
12	11.614	VV	0.0413	18.27853	6.59229	0.01771
13	11.718	VB	0.0450	974.44366	334.71503	0.94414
14	11.941	BB	0.0510	5626.37744	1600.62048	5.45142
15	12.085	BB	0.0410	46.42089	17.46807	0.04498
16	12.253	BV	0.0341	8.28441	3.69888	0.00803
17	12.327	VV	0.0480	365.22760	118.35864	0.35387
18	12.484	VV	0.0516	4737.40186	1361.90771	4.59009
19	12.571	VV	0.0438	17.03695	5.88091	0.01651
20	12.682	VB	0.0414	837.04083	320.80048	0.81101
21	13.000	BB	0.0443	63.25880	22.13360	0.06129
22	13.340	BB	0.0450	43.54136	14.96175	0.04219
23	13.667	BB	0.0489	24.65304	7.58788	0.02389
24	14.211	BB	0.0469	236.96503	77.04823	0.22960
25	14.442	BV	0.0543	7.47547	2.22127	0.00724
26	14.603	VV	0.0655	40.97044	8.76694	0.03970
27	14.714	VB	0.0545	14.67760	4.03319	0.01422
28	14.854	BB	0.0478	14.75515	4.55235	0.01430
29	15.033	BB	0.0786	17.12697	3.35540	0.01659
30	15.284	BB	0.0474	7.44439	2.38922	0.00721
31	15.408	BB	0.0505	21.16002	6.40429	0.02050
32	15.651	BV	0.0442	16.80025	5.73732	0.01628
33	15.769	VB	0.0474	169.94467	54.41002	0.16466
34	15.971	BB	0.0566	25.33270	7.47271	0.02454
35	16.474	BB	0.0494	36.63671	10.83900	0.03550
36	16.640	BB	0.0457	281.88876	97.71458	0.27312
37	16.867	BB	0.0622	117.27762	26.70552	0.11363
38	17.149	BV	0.0496	34.79656	10.25821	0.03371
39	17.249	VB	0.0518	209.68510	61.46600	0.20316
40	17.431	BV	0.0526	195.75328	53.58401	0.18967
41	17.608	VB	0.0610	46.59656	10.66497	0.04515
42	17.998	BB	0.0448	175.50508	60.59892	0.17005
43	18.253	BB	0.0555	17.40511	4.77280	0.01686
44	18.401	BB	0.0643	11.49226	2.51761	0.01113
45	18.664	BB	0.0647	54.67765	13.10515	0.05298
46	18.917	BV	0.0459	469.20261	157.07317	0.45461
47	19.027	VB	0.0692	23.35454	4.85187	0.02263
48	19.852	BV	0.0468	515.11060	167.67918	0.49909
49	19.998	VB	0.0942	33.76354	5.03896	0.03271
50	20.193	BB	0.0608	12.44729	3.03979	0.01206
51	20.481	BB	0.0310	3.66840	2.24696	0.00355
52	20.786	BV	0.0862	53.13496	8.35468	0.05148
53	21.023	VB	0.0614	10.07722	2.37946	0.00976
54	21.447	BB	0.0502	495.86249	151.53094	0.48044
55	21.961	BV	0.0499	14.54326	4.47363	0.01409
56	22.045	VV	0.0647	18.14559	4.62781	0.01758
57	22.152	VB	0.0468	35.53247	11.91321	0.03443
58	22.391	BV	0.0579	41.19699	10.24277	0.03992
59	22.543	VB	0.0735	110.32794	20.92262	0.10690
60	22.804	BV	0.0801	40.75842	6.68908	0.03949
61	22.959	VV	0.0724	25.42351	4.91409	0.02463
62	23.155	VV	0.0742	32.63831	6.22427	0.03162
63	23.280	VV	0.0718	81.27603	16.40552	0.07875

Sample Name: GALBANUM NT (BMV)

Peak #	RetTime [min]	Type	Width [min]	Area [pA*s]	Height [pA]	Area %
64	23.564	VV	0.0681	47.53584	9.89122	0.04606
65	23.760	VV	0.0603	14.89314	3.45284	0.01443
66	23.819	VV	0.0433	11.20908	3.81698	0.01086
67	23.899	VV	0.0461	23.24016	7.94628	0.02252
68	24.021	VV	0.0558	33.31428	9.07302	0.03228
69	24.114	VB	0.0462	24.83433	8.22097	0.02406
70	24.627	BV	0.0451	17.78010	6.26645	0.01723
71	24.773	VV	0.0495	85.71880	24.12440	0.08305
72	24.836	VV	0.0513	262.18240	77.77513	0.25403
73	24.982	VV	0.0779	47.92574	8.88996	0.04644
74	25.187	VV	0.0737	56.79575	10.23878	0.05503
75	25.274	VV	0.0511	34.08694	9.68749	0.03303
76	25.333	VB	0.0657	60.58245	12.69200	0.05870
77	25.530	BB	0.0518	75.36009	22.09673	0.07302
78	25.721	BB	0.0519	136.69948	40.00952	0.13245
79	25.905	BV	0.0601	47.46495	12.02312	0.04599
80	26.044	VV	0.0592	85.48095	20.69908	0.08282
81	26.200	VV	0.0517	16.91726	4.97190	0.01639
82	26.364	VV	0.0467	556.15100	181.49982	0.53886
83	26.474	VV	0.0497	177.09949	54.82008	0.17159
84	26.577	VB	0.0550	110.95641	31.54328	0.10751
85	26.991	BV	0.0458	14.61138	5.03914	0.01416
86	27.121	VB	0.0667	82.44154	17.26155	0.07988
87	27.472	BB	0.0470	215.00160	69.71069	0.20832
88	27.678	BB	0.0492	35.14141	11.64461	0.03405
89	28.020	BB	0.0455	78.89642	27.48524	0.07644
90	28.249	BV	0.0570	33.49767	9.30302	0.03246
91	28.351	VV	0.0410	11.52343	4.19890	0.01117
92	28.429	VV	0.0607	58.97473	13.85005	0.05714
93	28.550	VV	0.0514	22.61555	6.69021	0.02191
94	28.686	VV	0.0513	120.73815	34.09772	0.11698
95	28.866	VV	0.0620	1131.16589	239.80716	1.09599
96	29.022	VV	0.0564	197.16129	54.24119	0.19103
97	29.224	VV	0.0513	494.99921	150.70648	0.47961
98	29.303	VB	0.0564	100.08829	24.61483	0.09698
99	29.580	BB	0.0451	33.88054	11.26517	0.03283
100	30.099	BV	0.0620	19.61233	4.48989	0.01900
101	30.269	VB	0.0562	27.34645	7.37846	0.02650
102	30.589	BB	0.0879	34.64141	5.32762	0.03356
103	31.231	BB	0.1044	39.80092	5.24988	0.03856
104	31.586	BB	0.0762	16.36543	2.88280	0.01586
105	32.066	BB	0.0561	82.88712	21.94290	0.08031
106	32.765	BB	0.0571	20.36599	5.27416	0.01973
107	34.584	BB	0.0513	39.25053	12.27697	0.03803
108	34.896	BB	0.0503	9.26454	2.89749	0.00898
109	35.236	BB	0.0496	15.46270	4.79427	0.01498
110	36.052	BB	0.0503	8.00502	2.37544	0.00776
111	37.873	BB	0.0502	18.42998	5.78156	0.01786
112	38.188	BV	0.0485	38.88429	11.78930	0.03768
113	38.237	VV	0.0698	61.12756	11.92616	0.05923
114	38.423	VV	0.0538	246.13449	70.41088	0.23848
115	38.515	VB	0.0512	26.04730	7.95935	0.02524
116	45.212	BB	0.0576	38.92976	9.95990	0.03772
117	47.276	BB	0.0646	17.34722	3.84815	0.01681

Peak #	RetTime [min]	Type	Width [min]	Area [pA*s]	Height [pA]	Area %
118	52.568	BB	0.0997	52.52970	8.20627	0.05090
119	53.634	BB	0.0990	181.75562	25.56212	0.17610

Totals : 1.03209e5 1.68324e4

=====
*** End of Report ***