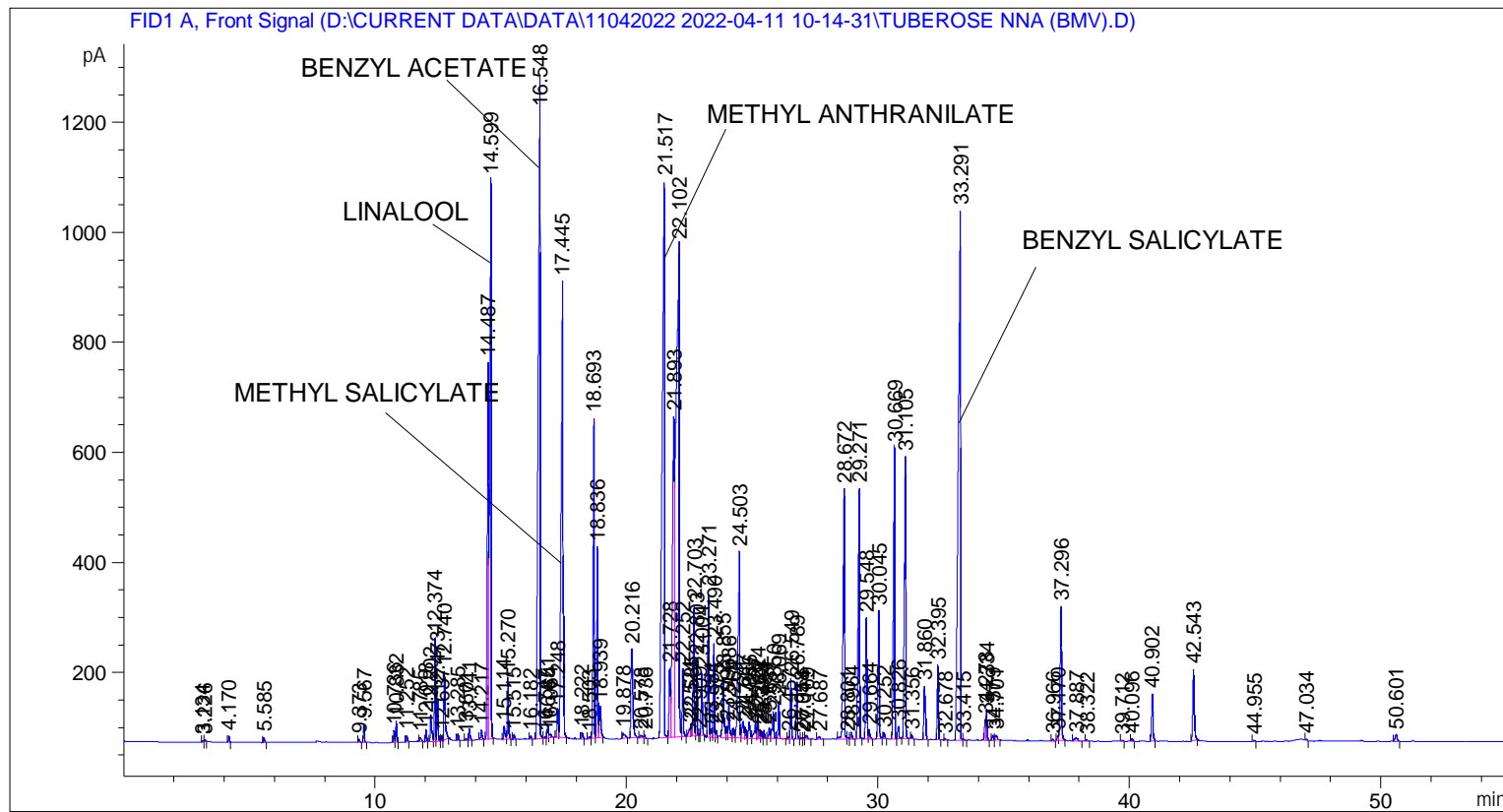


```
=====
Acq. Operator   : SYSTEM                               Seq. Line :    2
Acq. Instrument : BMV_NEW_GC_7820                     Location  : Vial 102
Injection Date  : 11-Apr-22 11:33:49 AM                Inj       :    1
                                                    Inj Volume: 0.5 µl

Acq. Method    : D:\CURRENT DATA\DATA\11042022 2022-04-11 10-14-31\UNIVERSAL BMV.M
Last changed   : 11-Apr-22 10:14:42 AM by SYSTEM
Analysis Method : C:\CHEM32\2\METHODS\COOLING.M
Last changed   : 05-Nov-20 11:10:00 AM by SYSTEM
=====
```



=====
 Area Percent Report
 =====

```
Sorted By      : Signal
Multiplier     : 1.0000
Dilution      : 1.0000
Do not use Multiplier & Dilution Factor with ISTDs
```

Signal 1: FID1 A, Front Signal

Peak #	RetTime [min]	Type	Width [min]	Area [pA*s]	Height [pA]	Area %
1	3.134	BB	0.0336	6.32796	2.77150	0.00921
2	3.226	BB	0.0391	10.14826	3.80587	0.01476
3	4.170	BB	0.0355	26.73794	10.95680	0.03890
4	5.585	BB	0.0457	27.77152	9.08089	0.04041
5	9.373	BB	0.0472	19.92023	6.25293	0.02898
6	9.567	BB	0.0427	90.81374	32.37939	0.13213
7	10.736	BV	0.0413	60.12411	22.39756	0.08748
8	10.832	VB	0.0450	115.13051	39.49960	0.16751
9	11.252	BB	0.0449	36.61964	12.23609	0.05328

Peak #	RetTime [min]	Type	Width [min]	Area [pA*s]	Height [pA]	Area %
10	11.785	BB	0.0588	37.36303	8.74616	0.05436
11	12.018	BB	0.0410	58.01347	21.85819	0.08441
12	12.202	BV	0.0554	192.97675	49.60620	0.28077
13	12.374	VV	0.0419	515.62933	188.69524	0.75020
14	12.473	VB	0.0448	224.08667	77.24410	0.32603
15	12.637	BV	0.0412	27.64202	10.34651	0.04022
16	12.740	VB	0.0515	449.08487	126.26241	0.65338
17	13.285	BB	0.0437	35.82518	12.76837	0.05212
18	13.601	BB	0.0497	13.43867	3.84755	0.01955
19	13.741	BB	0.0492	67.49463	21.17402	0.09820
20	14.217	BB	0.0549	66.30237	18.03740	0.09646
21	14.487	BV	0.0506	2386.43945	685.32135	3.47208
22	14.599	VB	0.0566	4317.59570	1016.29224	6.28177
23	15.114	BV	0.0561	96.01321	24.81201	0.13969
24	15.270	VB	0.0461	342.17795	113.74380	0.49784
25	15.515	BB	0.0432	24.86433	8.74032	0.03618
26	16.182	BB	0.0514	20.43760	6.20759	0.02974
27	16.548	BB	0.0692	6411.35889	1202.63489	9.32803
28	16.747	BV	0.0519	11.51217	3.63936	0.01675
29	16.851	VV	0.0471	79.63515	25.75801	0.11586
30	16.964	VB	0.0801	37.14961	6.55296	0.05405
31	17.248	BV	0.0616	206.96153	52.90688	0.30111
32	17.445	VB	0.0650	4125.15771	829.07446	6.00178
33	18.222	BB	0.0530	44.12669	12.25493	0.06420
34	18.503	BV	0.0564	15.17323	4.07683	0.02208
35	18.693	VV	0.0510	1891.17395	581.06500	2.75151
36	18.836	VV	0.0478	1034.83228	347.13922	1.50560
37	18.939	VB	0.0561	220.03450	56.93802	0.32013
38	19.878	BB	0.0809	57.07098	9.66102	0.08303
39	20.216	BB	0.0729	831.60828	161.91676	1.20993
40	20.578	BV	0.0754	27.41232	4.89097	0.03988
41	20.736	VB	0.0446	18.44954	6.39862	0.02684
42	21.517	BV	0.0853	6449.38086	1012.71356	9.38335
43	21.728	VV	0.0505	425.45969	125.71172	0.61901
44	21.893	VV	0.0742	3110.12280	583.07147	4.52499
45	22.102	VV	0.1103	7921.51758	894.64948	11.52519
46	22.252	VB	0.0472	374.14420	123.93305	0.54435
47	22.524	BV	0.0612	64.18835	14.33781	0.09339
48	22.585	VV	0.0420	63.21936	22.36367	0.09198
49	22.703	VV	0.0488	829.66888	237.51659	1.20710
50	22.803	VV	0.0468	409.66687	137.43250	0.59603
51	22.909	VV	0.0370	6.42693	2.88067	0.00935
52	23.004	VB	0.0486	355.85226	113.43627	0.51774
53	23.271	BV	0.0472	824.63904	265.64133	1.19979
54	23.381	VV	0.0468	48.10351	15.24597	0.06999
55	23.490	VV	0.0485	549.87476	171.25456	0.80002
56	23.575	VV	0.0459	40.88686	13.66422	0.05949
57	23.855	BV	0.0613	433.01022	102.42422	0.63000
58	23.996	VV	0.0494	71.09322	21.58441	0.10344
59	24.086	VV	0.0562	228.40054	61.64962	0.33230
60	24.264	VV	0.0576	71.13390	18.21267	0.10349
61	24.503	VV	0.0598	1502.54272	338.26840	2.18608
62	24.647	VV	0.0799	164.78024	30.55476	0.23974
63	24.741	VV	0.0483	64.53780	19.67353	0.09390

Peak #	RetTime [min]	Type	Width [min]	Area [pA*s]	Height [pA]	Area %
64	24.886	VV	0.0710	139.94707	29.67581	0.20361
65	25.137	VV	0.0672	126.04488	26.15027	0.18339
66	25.224	VV	0.0491	137.57404	43.31489	0.20016
67	25.289	VV	0.0428	45.90487	16.33309	0.06679
68	25.373	VV	0.0479	44.65969	14.50089	0.06498
69	25.484	VV	0.0483	46.69250	14.99846	0.06793
70	25.687	VV	0.0518	65.63104	19.74870	0.09549
71	25.850	VV	0.0584	204.29881	49.27406	0.29724
72	26.069	VB	0.0452	200.20023	68.21639	0.29128
73	26.457	BV	0.0433	13.65172	4.93758	0.01986
74	26.549	VB	0.0509	353.08777	111.57436	0.51372
75	26.789	BB	0.0454	305.20908	103.44377	0.44406
76	26.958	BV	0.0420	6.23179	2.41947	0.00907
77	27.044	VV	0.0424	7.53634	2.71025	0.01096
78	27.169	VB	0.0676	33.58435	6.79990	0.04886
79	27.687	BB	0.0777	28.46959	4.90550	0.04142
80	28.672	BV	0.0585	1851.42798	454.86456	2.69368
81	28.801	VB	0.0522	11.11455	3.00259	0.01617
82	28.964	BB	0.0559	44.12456	11.73356	0.06420
83	29.271	BB	0.0562	1844.49170	456.15561	2.68359
84	29.548	BV	0.0538	789.90234	220.60603	1.14925
85	29.664	VB	0.0582	67.42762	17.01206	0.09810
86	30.045	BB	0.0516	791.33337	233.26538	1.15133
87	30.252	BB	0.0494	36.81757	10.90168	0.05357
88	30.669	BV	0.0529	1905.32300	530.16132	2.77210
89	30.826	VB	0.0619	85.53452	22.22494	0.12445
90	31.105	BB	0.0522	1988.66772	512.99957	2.89336
91	31.356	BB	0.0544	27.95034	7.69740	0.04067
92	31.860	BB	0.0643	436.20712	97.24003	0.63465
93	32.395	BB	0.0508	431.67078	136.90463	0.62805
94	32.678	BB	0.0492	9.51733	3.24960	0.01385
95	33.291	BV	0.0779	5941.43652	963.56818	8.64433
96	33.415	VB	0.0556	12.11457	3.10173	0.01763
97	34.278	BV	0.0441	111.91203	38.23456	0.16282
98	34.334	VB	0.0476	180.28317	55.94980	0.26230
99	34.579	BV	0.0580	32.91772	9.14127	0.04789
100	34.701	VB	0.0790	48.04760	8.62133	0.06991
101	36.966	BB	0.0505	10.79880	3.27576	0.01571
102	37.170	BV	0.0463	27.40719	9.05268	0.03988
103	37.296	VB	0.0604	949.89874	244.35493	1.38203
104	37.887	BB	0.1142	54.96568	6.33909	0.07997
105	38.322	BB	0.0599	10.66536	2.49262	0.01552
106	39.712	BB	0.0537	7.52596	2.15703	0.01095
107	40.096	BB	0.0558	17.98826	4.90245	0.02617
108	40.902	BB	0.0589	324.55063	86.25948	0.47220
109	42.543	BB	0.0649	545.11548	129.94849	0.79310
110	44.955	BB	0.0515	10.46909	3.09401	0.01523
111	47.034	BB	0.0489	7.07926	2.12210	0.01030
112	50.601	BB	0.0806	69.50856	12.75322	0.10113

Totals : 6.87322e4 1.49866e4

=====