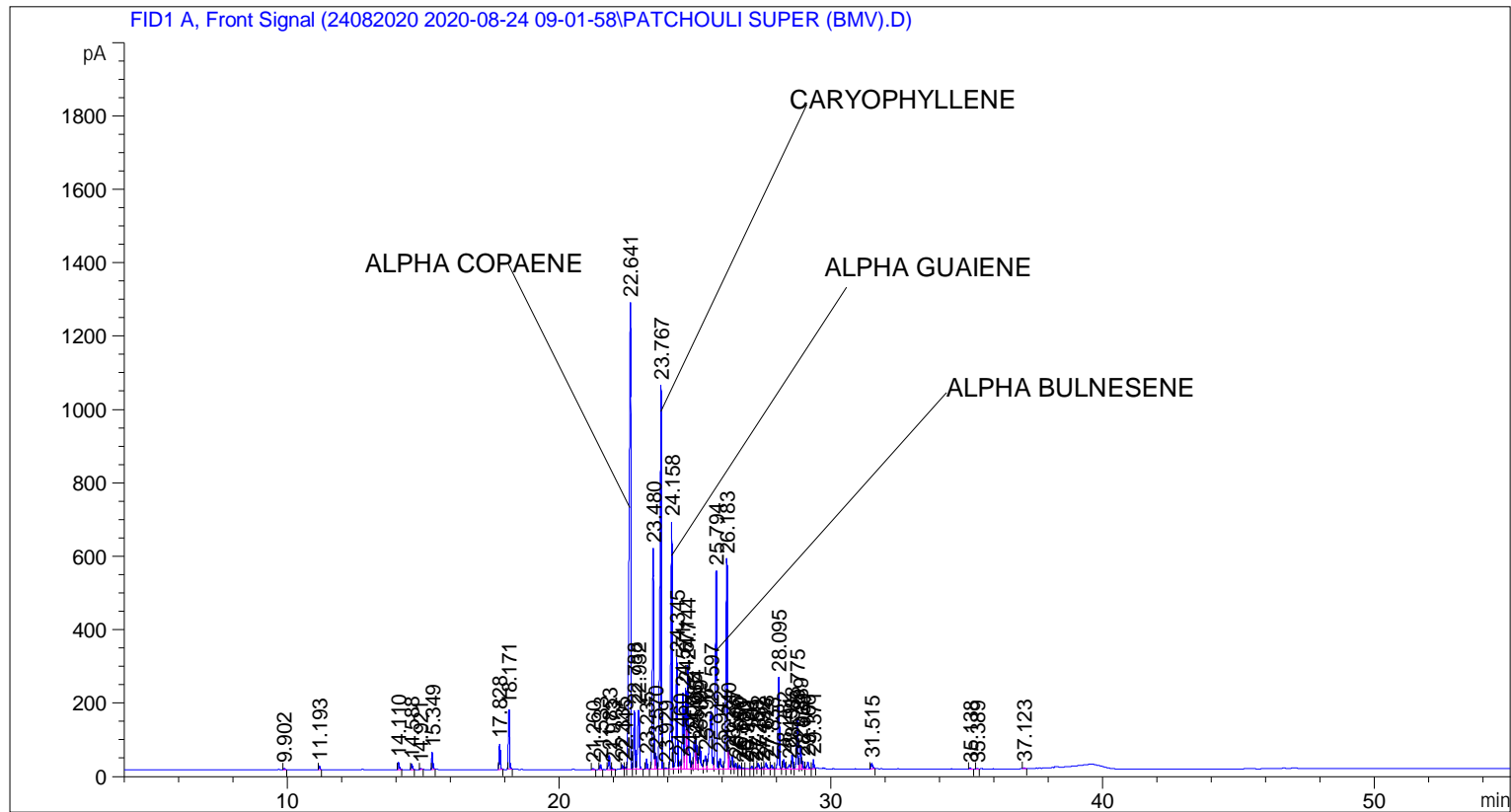


```

=====
Acq. Operator   : SYSTEM                               Seq. Line :    3
Acq. Instrument : BMV_NEW_GC_7820                     Location  : Vial 103
Injection Date  : 24-Aug-20 11:29:11 AM                Inj       :    1
                                                    Inj Volume: 0.5 µl

Acq. Method     : C:\CHEM32\2\DATA\24082020 2020-08-24 09-01-58\UNIVERSAL BMV.M
Last changed    : 24-Aug-20 9:02:07 AM by SYSTEM
Analysis Method : C:\CHEM32\2\DATA\24082020 2020-08-24 09-01-58\UNIVERSAL BMV.M (Sequence
Method)
Last changed    : 24-Aug-20 1:03:59 PM by SYSTEM
                  (modified after loading)
Additional Info : Peak(s) manually integrated
  
```



=====
 Area Percent Report
 =====

```

Sorted By      :      Signal
Multiplier     :      1.0000
Dilution       :      1.0000
Do not use Multiplier & Dilution Factor with ISTDs
  
```

Signal 1: FID1 A, Front Signal

Peak #	RetTime [min]	Type	Width [min]	Area [pA*s]	Height [pA]	Area %
1	9.902	BB	0.0442	10.26193	3.60656	0.03514
2	11.193	BB	0.0443	26.90095	9.42127	0.09210
3	14.110	BB	0.0468	63.54978	20.72165	0.21758
4	14.588	BB	0.0492	49.29746	15.47695	0.16879
5	14.921	BB	0.0558	12.91601	3.36652	0.04422
6	15.349	BB	0.0445	137.21483	47.74345	0.46980

Sample Name: PATCHOULI SUPER (BMV)

Peak #	RetTime [min]	Type	Width [min]	Area [pA*s]	Height [pA]	Area %
7	17.828	BB	0.0450	204.72711	70.19212	0.70095
8	18.171	BB	0.0466	482.73694	162.71709	1.65280
9	21.260	BB	0.0492	9.67352	3.03680	0.03312
10	21.533	BB	0.0482	41.94709	13.51162	0.14362
11	21.853	BV	0.0504	128.21227	38.96507	0.43898
12	21.973	VB	0.0516	12.30078	3.71421	0.04212
13	22.335	BV	0.0512	41.85338	12.46733	0.14330
14	22.445	VV	0.0511	18.19769	5.42959	0.06231
15	22.641	VV	0.0621	5579.77197	1272.94006	19.10414
16	22.788	VV	0.0502	525.00269	160.54353	1.79751
17	22.932	VB	0.0766	739.50079	160.94583	2.53192
18	23.235	BB	0.0479	85.10933	27.65342	0.29140
19	23.480	BV	0.0530	2112.97021	600.62573	7.23443
20	23.570	VV	0.0463	135.60913	43.57536	0.46430
21	23.767	VB	0.0519	3938.54126	1047.44702	13.48486
22	23.929	BV	0.0823	22.91294	3.79999	0.07845
23	24.158	VV	0.0498	2297.54004	672.95044	7.86636
24	24.345	VV	0.0503	1026.25854	304.96634	3.51372
25	24.460	VV	0.0561	80.06184	21.20083	0.27412
26	24.571	VV	0.0507	672.22894	208.05902	2.30159
27	24.671	VV	0.0509	740.49103	222.17747	2.53531
28	24.744	VV	0.0527	1013.48132	283.34274	3.46998
29	24.908	VV	0.0442	58.46204	19.92407	0.20016
30	24.985	VV	0.0495	251.63766	78.28658	0.86156
31	25.054	VV	0.0556	318.07101	87.09113	1.08902
32	25.199	VV	0.0699	302.36133	59.84885	1.03523
33	25.396	VV	0.0762	192.24568	35.47441	0.65821
34	25.597	VV	0.0903	1011.36829	158.83240	3.46274
35	25.794	VV	0.0528	1842.07471	540.32910	6.30693
36	25.942	VV	0.0703	136.69354	29.36418	0.46801
37	26.183	VV	0.0558	2051.62695	572.25958	7.02440
38	26.240	VV	0.0370	129.14992	51.93708	0.44219
39	26.387	VV	0.0539	131.50983	36.63722	0.45027
40	26.506	VV	0.0554	58.36101	16.04565	0.19982
41	26.650	VV	0.0501	34.99384	10.44048	0.11981
42	26.783	VV	0.0582	14.96164	3.95035	0.05123
43	26.920	VV	0.0659	13.31065	2.82775	0.04557
44	27.101	VV	0.0549	28.79767	8.01936	0.09860
45	27.259	VV	0.0536	19.06059	5.47046	0.06526
46	27.332	VV	0.0608	66.07082	15.48136	0.22621
47	27.492	VV	0.0530	18.88897	5.50519	0.06467
48	27.628	VV	0.0758	90.57893	17.36716	0.31013
49	27.838	VV	0.0757	45.24226	9.65697	0.15490
50	28.095	VB	0.0529	854.85291	249.87701	2.92686
51	28.282	BV	0.0563	96.95276	26.12011	0.33195
52	28.491	VV	0.0743	67.88979	12.31613	0.23244
53	28.588	VV	0.0484	124.72092	38.94675	0.42702
54	28.775	VV	0.0522	481.57382	139.89354	1.64882
55	28.889	VV	0.0559	239.04970	64.99901	0.81846
56	28.969	VV	0.0460	65.89384	21.97713	0.22561
57	29.166	VV	0.0635	83.19720	18.15693	0.28485
58	29.371	VV	0.0475	74.67390	24.54901	0.25567
59	31.515	BB	0.0670	61.81480	14.14660	0.21164
60	35.138	BB	0.0646	14.00697	3.36140	0.04796

Peak #	RetTime [min]	Type	Width [min]	Area [pA*s]	Height [pA]	Area %
61	35.389	BB	0.0437	6.53689	2.40418	0.02238
62	37.123	BB	0.0535	11.24049	3.23707	0.03849

Totals : 2.92071e4 7825.33227

=====
*** End of Report ***