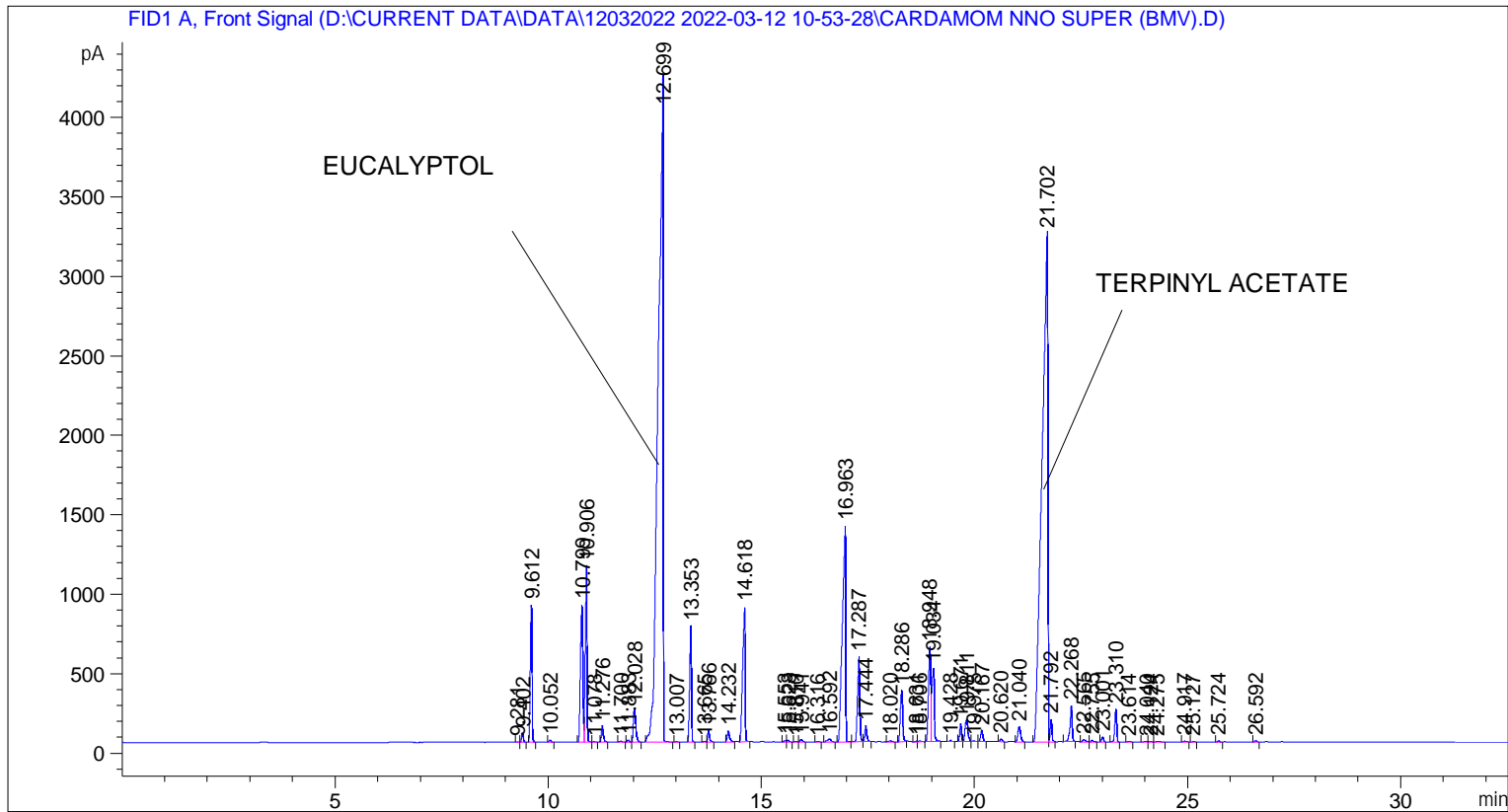


```
=====
Acq. Operator   : SYSTEM                               Seq. Line :    6
Acq. Instrument : BMV_NEW_GC_7820                     Location  : Vial 106
Injection Date  : 12-Mar-22 3:40:27 PM                Inj       :    1
                                                    Inj Volume: 0.5 µl

Acq. Method    : D:\CURRENT DATA\DATA\12032022 2022-03-12 10-53-28\UNIVERSAL BMV.M
Last changed   : 12-Mar-22 10:53:38 AM by SYSTEM
Analysis Method: C:\CHEM32\2\METHODS\COOLING.M
Last changed   : 05-Nov-20 11:10:00 AM by SYSTEM
=====
```



=====  
 Area Percent Report  
 =====

```
Sorted By      :      Signal
Multiplier     :      1.0000
Dilution       :      1.0000
Do not use Multiplier & Dilution Factor with ISTDs
```

Signal 1: FID1 A, Front Signal

Peak #	RetTime [min]	Type	Width [min]	Area [pA*s]	Height [pA]	Area %
1	9.281	BV	0.0433	6.18056	2.30388	0.00617
2	9.402	VB	0.0432	162.66536	58.89157	0.16241
3	9.612	BB	0.0453	2459.06519	861.98590	2.45523
4	10.052	BB	0.0504	45.50948	13.48081	0.04544
5	10.799	BV	0.0628	3308.14478	862.23242	3.30299
6	10.906	VB	0.0440	3225.76001	1106.96448	3.22073
7	11.078	BB	0.0550	12.62645	3.35013	0.01261
8	11.276	BB	0.0473	325.10739	104.54457	0.32460
9	11.700	BB	0.0629	27.04877	6.45394	0.02701

Peak #	RetTime [min]	Type	Width [min]	Area [pA*s]	Height [pA]	Area %
10	11.883	BV	0.0516	43.61080	13.54510	0.04354
11	12.028	VB	0.0645	840.62372	206.49081	0.83931
12	12.699	BB	0.1001	3.39960e4	4171.75586	33.94294
13	13.007	BB	0.0399	8.31853	3.35653	0.00831
14	13.353	BB	0.0466	2097.36597	728.22858	2.09410
15	13.665	BV	0.0495	15.70815	5.16956	0.01568
16	13.766	VB	0.0458	207.42076	69.48140	0.20710
17	14.232	BB	0.0549	256.48141	69.69212	0.25608
18	14.618	BB	0.0559	3475.67310	847.16278	3.47025
19	15.553	BV	0.0475	27.69574	9.36445	0.02765
20	15.628	VB	0.0456	37.60860	12.67196	0.03755
21	15.810	BV	0.0477	9.35420	2.97277	0.00934
22	15.941	VB	0.0529	53.12628	15.55198	0.05304
23	16.316	BB	0.0492	11.72959	3.78538	0.01171
24	16.592	BB	0.0799	110.63697	20.18694	0.11046
25	16.963	BB	0.0725	7378.86133	1356.61487	7.36735
26	17.287	BV	0.0520	1931.97327	536.37109	1.92896
27	17.444	VB	0.0482	320.36530	100.44073	0.31987
28	18.020	BB	0.0644	37.88823	8.59619	0.03783
29	18.286	BB	0.0587	1210.67957	323.10529	1.20879
30	18.631	BV	0.0464	12.87062	4.24373	0.01285
31	18.706	VB	0.0641	20.44196	4.85395	0.02041
32	18.948	BV	0.0556	2225.18237	596.04230	2.22171
33	19.034	VB	0.0542	1819.02380	459.68542	1.81619
34	19.428	BB	0.0491	25.16280	7.70026	0.02512
35	19.671	BV	0.0482	340.59290	112.99350	0.34006
36	19.811	VV	0.0746	661.08136	141.23499	0.66005
37	19.975	VV	0.0825	31.01391	5.43931	0.03097
38	20.167	VB	0.0564	264.44424	71.06508	0.26403
39	20.620	BB	0.0550	63.98067	17.76645	0.06388
40	21.040	BB	0.0686	421.57520	95.34080	0.42092
41	21.702	BV	0.1160	3.04525e4	3199.58887	30.40503
42	21.792	VB	0.0408	381.32849	140.10210	0.38073
43	22.268	BB	0.0518	800.08838	228.61940	0.79884
44	22.565	BB	0.0672	57.61225	12.87544	0.05752
45	22.755	BB	0.0491	27.57280	8.67226	0.02753
46	23.001	BB	0.0481	100.75622	32.59689	0.10060
47	23.310	BB	0.0483	646.90216	207.80280	0.64589
48	23.614	BB	0.0581	17.74063	4.79819	0.01771
49	24.040	BV	0.0776	16.17753	2.74934	0.01615
50	24.124	VV	0.0502	13.63546	4.05969	0.01361
51	24.275	VB	0.0856	24.09653	3.87481	0.02406
52	24.917	BB	0.0621	28.73659	6.56421	0.02869
53	25.127	BB	0.0608	11.68447	2.79308	0.01167
54	25.724	BB	0.0489	22.01531	6.95913	0.02198
55	26.592	BB	0.0551	26.76631	7.42363	0.02672

Totals : 1.00156e5 1.69106e4

\*\*\* End of Report \*\*\*