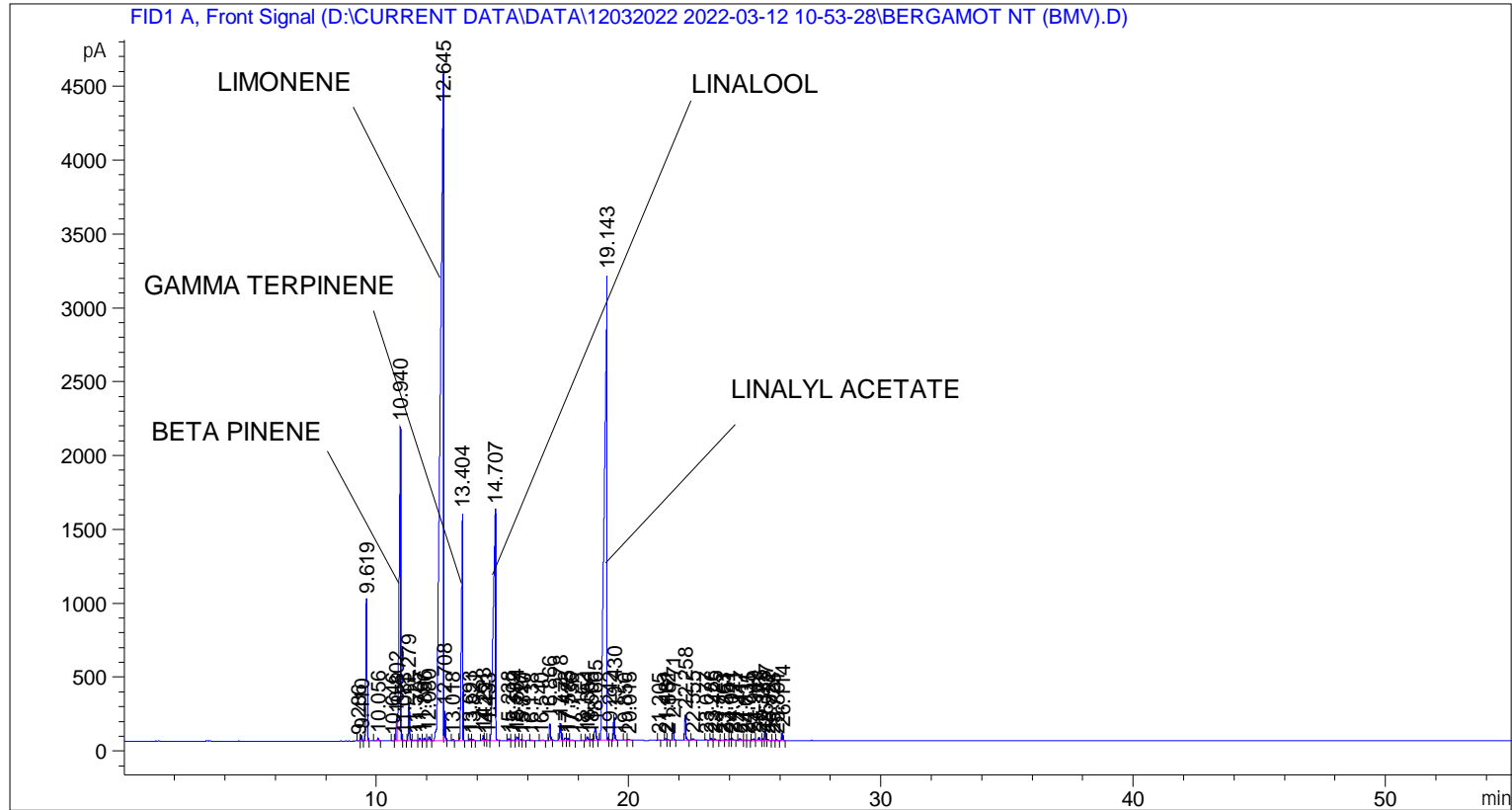


```

=====
Acq. Operator   : SYSTEM                               Seq. Line :    3
Acq. Instrument : BMV_NEW_GC_7820                     Location  : Vial 103
Injection Date  : 12-Mar-22 1:17:35 PM                Inj       :    1
                                                    Inj Volume: 0.5 µl

Acq. Method     : D:\CURRENT DATA\DATA\12032022 2022-03-12 10-53-28\UNIVERSAL BMV.M
Last changed    : 12-Mar-22 10:53:38 AM by SYSTEM
Analysis Method : C:\CHEM32\2\METHODS\COOLING.M
Last changed    : 30-Mar-22 3:17:28 PM by SYSTEM
                  (modified after loading)

Additional Info : Peak(s) manually integrated
  
```



=====
 Area Percent Report
 =====

```

Sorted By       :      Signal
Multiplier      :      1.0000
Dilution        :      1.0000
Do not use Multiplier & Dilution Factor with ISTDs
  
```

Signal 1: FID1 A, Front Signal

Peak #	RetTime [min]	Type	Width [min]	Area [pA*s]	Height [pA]	Area %
1	9.286	BB	0.0406	6.75783	2.57608	0.00685
2	9.410	BB	0.0414	104.27319	38.72766	0.10570
3	9.619	BB	0.0461	2729.24707	962.67865	2.76648
4	10.056	BB	0.0505	61.86957	18.29682	0.06271
5	10.646	BV	0.0475	6.11321	1.90258	0.00620
6	10.802	VV	0.0573	527.86823	149.01801	0.53507
7	10.940	VV	0.0578	8527.22656	2127.70605	8.64357

Sample Name: BERGAMOT NT (BMV)

Peak #	RetTime [min]	Type	Width [min]	Area [pA*s]	Height [pA]	Area %
8	11.083	VB	0.0580	19.72485	4.79277	0.01999
9	11.279	BB	0.0449	756.71741	260.34616	0.76704
10	11.525	BV	0.0704	18.95306	4.56872	0.01921
11	11.707	VV	0.0539	64.80816	18.46620	0.06569
12	11.886	VV	0.0505	57.72266	17.93621	0.05851
13	12.080	VV	0.0676	115.54427	27.75583	0.11712
14	12.645	VV	0.1071	3.89216e4	4489.95703	39.45266
15	12.708	VB	0.0387	506.15182	198.95085	0.51306
16	13.018	BB	0.0435	25.07002	9.01189	0.02541
17	13.404	BB	0.0518	5761.71533	1534.50757	5.84033
18	13.693	BB	0.0416	29.54782	11.24981	0.02995
19	13.821	BB	0.0576	37.06428	9.91965	0.03757
20	14.223	BV	0.0444	94.19360	31.91152	0.09548
21	14.291	VV	0.0506	31.95740	9.40428	0.03239
22	14.433	VV	0.0772	15.59580	2.88009	0.01581
23	14.707	VB	0.0815	1.00120e4	1567.15845	10.14855
24	15.238	BV	0.0613	54.64038	13.75787	0.05539
25	15.392	VV	0.0611	23.28816	6.03037	0.02361
26	15.554	VV	0.0659	120.45286	25.12511	0.12210
27	15.727	VV	0.0491	28.73899	8.56813	0.02913
28	15.810	VB	0.0464	16.41500	5.25549	0.01664
29	16.138	BB	0.0455	9.80490	3.41864	0.00994
30	16.540	BB	0.0946	21.42213	3.06279	0.02171
31	16.866	BB	0.0490	363.10504	114.59265	0.36806
32	17.278	BB	0.0590	448.88419	116.47425	0.45501
33	17.473	BV	0.0785	83.09048	16.02627	0.08422
34	17.585	VB	0.0547	51.68501	13.81396	0.05239
35	17.736	BB	0.0688	20.06974	4.05370	0.02034
36	18.162	BB	0.0471	14.90189	4.81105	0.01511
37	18.351	BV	0.0641	102.30877	22.91209	0.10370
38	18.508	VV	0.0521	19.67454	5.87667	0.01994
39	18.665	VB	0.0715	377.16211	83.84309	0.38231
40	19.143	BV	0.1014	2.60399e4	3151.87378	26.39521
41	19.242	VB	0.0474	12.43762	3.78163	0.01261
42	19.430	BB	0.0441	518.90076	177.65204	0.52598
43	19.850	BB	0.0420	4.99428	2.00980	0.00506
44	20.015	BB	0.0757	31.89786	5.93825	0.03233
45	21.205	BB	0.0425	6.09587	2.25895	0.00618
46	21.481	BV	0.0519	39.71310	11.91441	0.04025
47	21.562	VB	0.0457	14.63480	4.92526	0.01483
48	21.771	BB	0.0460	325.66013	111.88095	0.33010
49	22.258	BB	0.0485	542.56818	173.22220	0.54997
50	22.555	BB	0.0650	44.64412	9.82792	0.04525
51	23.077	BB	0.0298	4.79498	2.97127	0.00486
52	23.286	BV	0.0459	46.08891	15.84911	0.04672
53	23.425	VB	0.0558	34.43898	9.37905	0.03491
54	23.763	BV	0.0681	22.13643	4.44393	0.02244
55	23.851	VB	0.0640	21.38914	4.88834	0.02168
56	24.041	BV	0.0466	33.25698	10.90485	0.03371
57	24.121	VB	0.0462	39.60938	12.74934	0.04015
58	24.417	BB	0.0705	56.87192	11.75137	0.05765
59	24.631	BV	0.0542	8.18676	2.26344	0.00830
60	24.735	VB	0.0632	16.63166	3.57755	0.01686
61	24.949	BV	0.0662	46.11184	9.93279	0.04674

Peak #	RetTime [min]	Type	Width [min]	Area [pA*s]	Height [pA]	Area %
62	25.176	VV	0.0729	94.45026	18.40409	0.09574
63	25.333	VV	0.0493	33.82393	10.30325	0.03429
64	25.437	VV	0.0514	210.05710	62.26759	0.21292
65	25.522	VB	0.0454	24.01253	8.13332	0.02434
66	25.725	BB	0.0443	10.04673	3.51847	0.01018
67	25.891	BB	0.0457	18.70099	6.47238	0.01896
68	26.114	BB	0.0493	164.57755	52.89226	0.16682

Totals : 9.86540e4 1.58533e4

=====
*** End of Report ***