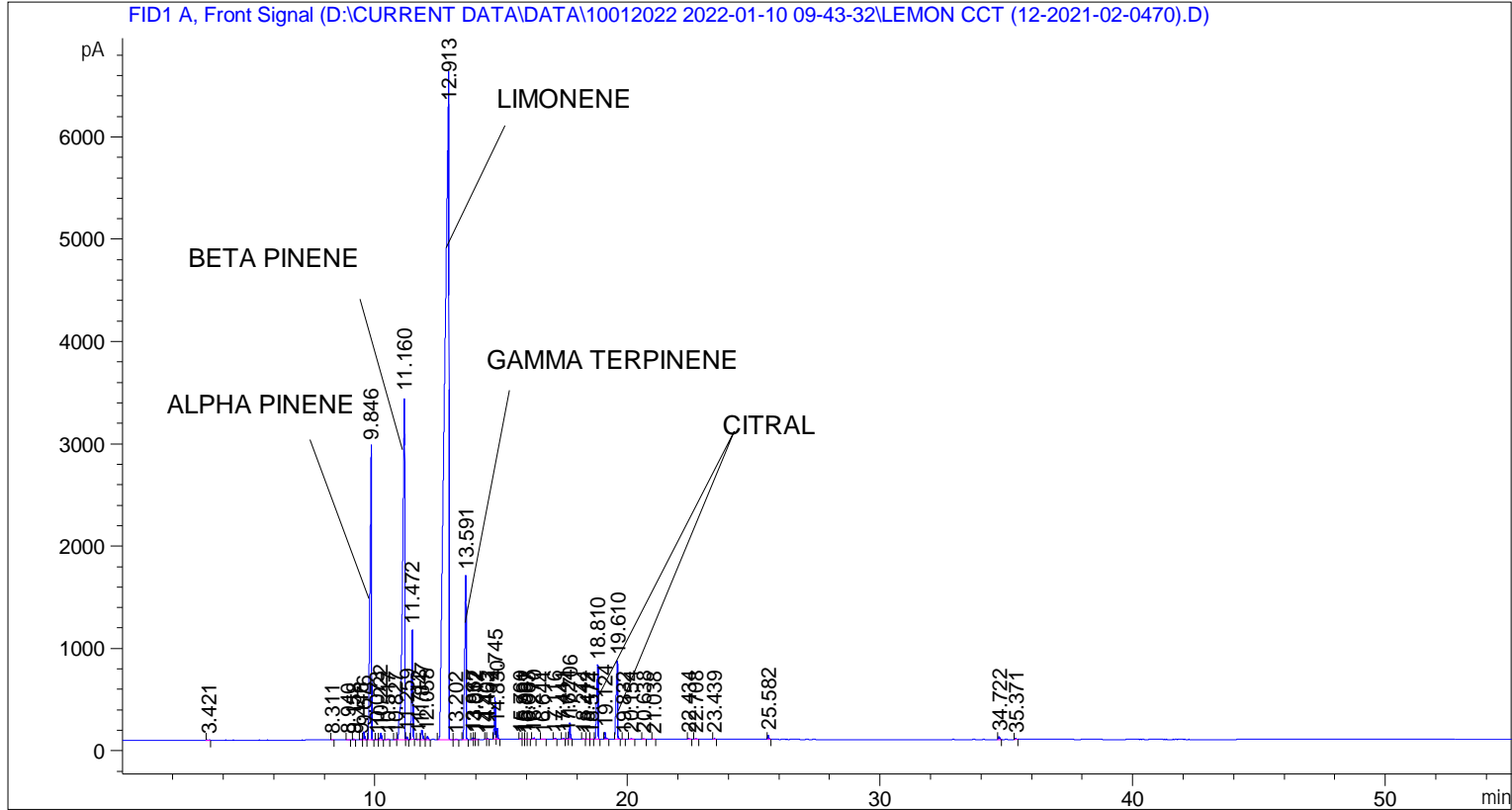


```

=====
Acq. Operator   : SYSTEM                               Seq. Line :    4
Acq. Instrument : BMV_NEW_GC_7820                     Location  : Vial 104
Injection Date  : 10-Jan-22 1:09:11 PM                Inj       :    1
                                                    Inj Volume: 0.5 µl

Acq. Method    : D:\CURRENT DATA\DATA\10012022 2022-01-10 09-43-32\UNIVERSAL BMV.M
Last changed   : 10-Jan-22 9:43:43 AM by SYSTEM
Analysis Method : C:\CHEM32\2\METHODS\COOLING.M
Last changed   : 03-Mar-22 2:15:55 PM by SYSTEM
                (modified after loading)
  
```



=====  
 Area Percent Report  
 =====

```

Sorted By      :      Signal
Multiplier     :      1.0000
Dilution       :      1.0000
Do not use Multiplier & Dilution Factor with ISTDs
  
```

Signal 1: FID1 A, Front Signal

Peak #	RetTime [min]	Type	Width [min]	Area [pA*s]	Height [pA]	Area %
1	3.421	BB	0.0471	9.63660	2.66793	0.00776
2	8.311	BB	0.0427	6.63578	2.37069	0.00534
3	8.940	BB	0.0522	9.88286	3.18872	0.00795
4	9.158	BB	0.0427	14.93818	5.49023	0.01202
5	9.446	BV	0.0474	31.15292	10.26415	0.02507
6	9.576	VB	0.0575	280.72522	78.90725	0.22595
7	9.846	BB	0.0580	1.23165e4	2876.50464	9.91349
8	10.073	BV	0.0453	15.01859	5.26843	0.01209

Peak #	RetTime [min]	Type	Width [min]	Area [pA*s]	Height [pA]	Area %
9	10.222	VB	0.0511	233.48283	67.95540	0.18793
10	10.517	BV	0.0738	31.83105	6.00518	0.02562
11	10.827	BV	0.0710	31.38366	6.65520	0.02526
12	11.160	VV	0.0740	1.92491e4	3351.35449	15.49355
13	11.259	VB	0.0433	86.45792	30.28933	0.06959
14	11.472	BB	0.0485	3449.55420	1072.01501	2.77653
15	11.712	BV	0.0503	24.12214	7.74665	0.01942
16	11.847	VV	0.0728	411.03625	89.13633	0.33084
17	12.058	VV	0.0638	123.75250	30.23294	0.09961
18	12.913	BV	0.1363	7.30748e4	6493.79443	58.81762
19	13.202	VB	0.0436	21.89347	7.39031	0.01762
20	13.591	BB	0.0548	6035.57373	1609.24353	4.85801
21	13.867	BV	0.0411	42.19687	16.32913	0.03396
22	13.932	VV	0.0508	28.56840	8.60115	0.02299
23	14.012	VB	0.0510	25.13352	7.15370	0.02023
24	14.403	BV	0.0395	8.29104	3.28292	0.00667
25	14.462	VB	0.0457	22.53096	7.58145	0.01814
26	14.745	BV	0.0468	1220.28418	408.83054	0.98220
27	14.830	VB	0.0425	298.58334	107.18843	0.24033
28	15.760	BV	0.0497	23.96472	7.05091	0.01929
29	15.891	VV	0.0470	13.35891	4.32508	0.01075
30	15.967	VV	0.0461	15.01299	5.13702	0.01208
31	16.063	VB	0.0386	5.80633	2.28759	0.00467
32	16.270	BB	0.0480	40.85180	13.23071	0.03288
33	16.644	BB	0.0696	18.01192	4.23557	0.01450
34	17.116	BB	0.0493	27.55919	8.61528	0.02218
35	17.441	BB	0.0548	25.56934	7.31830	0.02058
36	17.624	BV	0.0433	24.03483	8.67899	0.01935
37	17.706	VB	0.0463	474.35745	161.45050	0.38181
38	18.244	BB	0.0497	15.36579	4.88967	0.01237
39	18.412	BB	0.0498	15.04899	4.41311	0.01211
40	18.574	BB	0.0508	11.16916	3.44525	0.00899
41	18.810	BB	0.0567	2720.85620	726.36273	2.19001
42	19.124	BB	0.0500	221.29634	67.89172	0.17812
43	19.610	BB	0.0563	3120.10522	769.19330	2.51136
44	19.832	BB	0.0361	3.33921	1.49468	0.00269
45	20.154	BB	0.0860	30.16384	4.68937	0.02428
46	20.638	BB	0.0504	14.62851	4.44414	0.01177
47	21.038	BB	0.0538	10.35929	2.76238	0.00834
48	22.434	BB	0.0602	25.29910	6.53130	0.02036
49	22.708	BB	0.0665	24.76874	5.50795	0.01994
50	23.439	BB	0.0473	19.34914	6.39679	0.01557
51	25.582	BB	0.0477	115.23302	38.70819	0.09275
52	34.722	BB	0.0493	88.24079	27.57331	0.07102
53	35.371	BB	0.0522	32.82574	9.77133	0.02642

Totals : 1.24240e5 1.82219e4

=====  
 \*\*\* End of Report \*\*\*