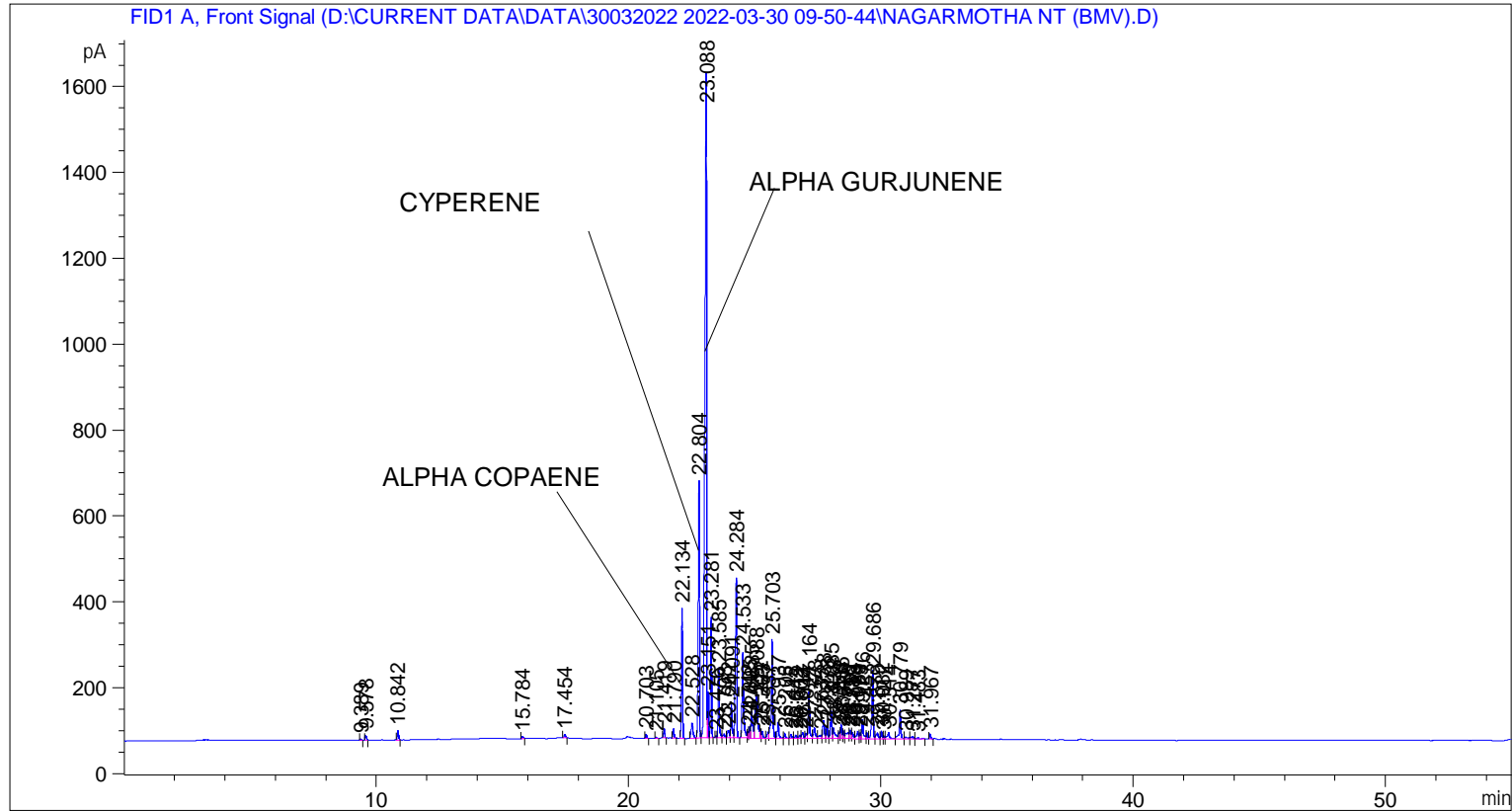


```

=====
Acq. Operator   : SYSTEM                               Seq. Line :    6
Acq. Instrument : BMV_NEW_GC_7820                     Location  : Vial 106
Injection Date  : 30-Mar-22 3:38:21 PM                 Inj       :    1
                                                    Inj Volume: 0.5 µl

Acq. Method     : D:\CURRENT DATA\DATA\30032022 2022-03-30 09-50-44\UNIVERSAL BMV.M
Last changed    : 30-Mar-22 9:50:54 AM by SYSTEM
Analysis Method : C:\CHEM32\2\METHODS\COOLING.M
Last changed    : 02-Apr-22 1:53:54 PM by SYSTEM
                (modified after loading)
  
```



=====
 Area Percent Report
 =====

```

Sorted By      :      Signal
Multiplier     :      1.0000
Dilution       :      1.0000
Do not use Multiplier & Dilution Factor with ISTDs
  
```

Signal 1: FID1 A, Front Signal

Peak #	RetTime [min]	Type	Width [min]	Area [pA*s]	Height [pA]	Area %
1	9.389	BB	0.0461	7.74503	2.57563	0.03650
2	9.578	BB	0.0474	34.45836	11.05104	0.16241
3	10.842	BB	0.0489	65.68162	20.76865	0.30958
4	15.784	BB	0.0551	20.05537	5.42508	0.09453
5	17.454	BB	0.0610	29.35512	7.12809	0.13836
6	20.703	BB	0.0470	31.72841	10.56965	0.14955
7	21.105	BB	0.0432	8.90103	3.32536	0.04195
8	21.419	BB	0.0493	65.98326	21.19322	0.31100

Sample Name: NAGARMOTHA NT (BMV)

Peak #	RetTime [min]	Type	Width [min]	Area [pA*s]	Height [pA]	Area %
9	21.790	BB	0.0545	74.81079	21.55379	0.35261
10	22.134	BB	0.0527	1005.76306	303.04562	4.74048
11	22.528	BB	0.0754	189.13942	35.35649	0.89147
12	22.804	BV	0.0523	2017.50464	599.16724	9.50913
13	23.088	VV	0.0695	7331.35010	1542.01782	34.55495
14	23.151	VV	0.0332	228.64494	105.90062	1.07768
15	23.281	VB	0.0458	812.43317	280.28876	3.82925
16	23.476	BV	0.0407	9.17774	3.73395	0.04326
17	23.585	VV	0.0503	520.34161	162.96759	2.45253
18	23.798	VV	0.0755	45.38598	8.46787	0.21392
19	23.962	VV	0.0862	91.22098	17.37652	0.42995
20	24.091	VV	0.0533	287.78012	81.38483	1.35640
21	24.284	VB	0.0577	1491.55957	372.65286	7.03019
22	24.533	BV	0.0584	796.39337	200.24313	3.75365
23	24.742	VV	0.0452	49.66521	16.01499	0.23409
24	24.805	VV	0.0464	82.05306	26.26446	0.38674
25	24.885	VV	0.0679	295.54578	61.69473	1.39300
26	25.088	VV	0.0970	691.70239	99.57027	3.26021
27	25.222	VV	0.0475	69.26496	22.13280	0.32647
28	25.303	VV	0.0578	62.60528	16.30951	0.29508
29	25.537	VV	0.0569	56.49775	14.05113	0.26629
30	25.703	VV	0.0583	890.38184	229.53908	4.19665
31	25.937	VV	0.0609	151.07658	36.82830	0.71207
32	26.205	VV	0.0538	40.19292	11.21163	0.18944
33	26.448	VV	0.0587	39.40578	10.05264	0.18573
34	26.642	VV	0.0655	32.74004	7.27090	0.15431
35	26.802	VV	0.0646	34.68849	7.55622	0.16350
36	26.917	VV	0.0667	65.12626	13.90283	0.30696
37	27.044	VV	0.0639	52.32919	11.99417	0.24664
38	27.164	VV	0.0556	398.31729	109.10853	1.87739
39	27.378	VV	0.0745	132.48363	25.54593	0.62444
40	27.635	VV	0.1045	61.75616	7.78548	0.29108
41	27.738	VV	0.0704	186.60884	42.35947	0.87955
42	27.873	VV	0.0568	112.24219	29.92892	0.52903
43	28.035	VV	0.0532	221.49084	64.29082	1.04396
44	28.128	VV	0.0840	157.92076	25.94123	0.74433
45	28.356	VV	0.0511	52.84912	15.38990	0.24909
46	28.435	VV	0.0533	114.89240	32.47238	0.54152
47	28.520	VV	0.0549	66.09623	17.99027	0.31153
48	28.716	VV	0.1105	125.31338	14.41014	0.59064
49	28.797	VV	0.0629	86.09290	20.13269	0.40578
50	28.889	VV	0.0659	63.44352	13.98400	0.29903
51	29.089	VV	0.0712	85.32773	16.80408	0.40218
52	29.179	VV	0.0538	48.76825	13.60614	0.22986
53	29.276	VV	0.0611	191.74532	45.55283	0.90376
54	29.453	VV	0.0535	52.24434	15.03127	0.24624
55	29.686	VV	0.0560	589.59497	159.80394	2.77895
56	29.879	VV	0.0898	89.70204	13.62405	0.42279
57	30.032	VV	0.0511	61.17098	18.23311	0.28832
58	30.121	VV	0.0510	22.11510	6.29673	0.10424
59	30.314	VV	0.0924	98.44274	14.28897	0.46399
60	30.779	VV	0.0642	294.15646	67.02391	1.38645
61	30.989	VB	0.1012	34.05193	4.45218	0.16050
62	31.277	BV	0.0812	31.35790	5.36509	0.14780

Peak #	RetTime [min]	Type	Width [min]	Area [pA*s]	Height [pA]	Area %
63	31.483	VB	0.0691	16.34125	3.39658	0.07702
64	31.967	BB	0.0564	43.27967	11.62385	0.20399

Totals : 2.12165e4 5215.02998

=====
*** End of Report ***