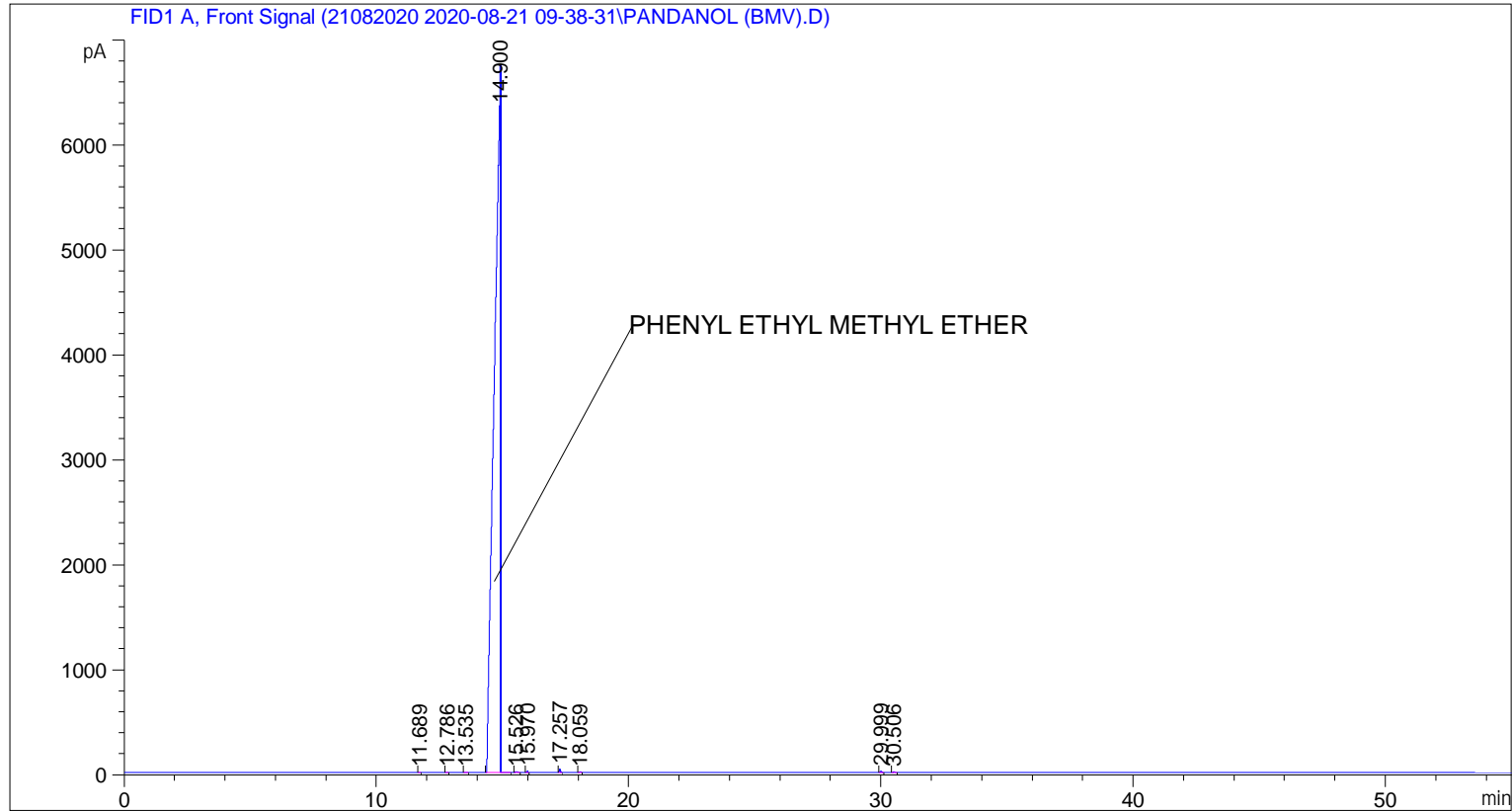


=====

Acq. Operator	: SYSTEM	Seq. Line	: 1
Acq. Instrument	: BMV_NEW_GC_7820	Location	: Vial 101
Injection Date	: 21-Aug-20 9:49:58 AM	Inj	: 1
		Inj Volume	: 0.5 µl
Acq. Method	: C:\CHEM32\2\DATA\21082020 2020-08-21 09-38-31\UNIVERSAL BMV.M		
Last changed	: 21-Aug-20 9:38:42 AM by SYSTEM		
Analysis Method	: C:\CHEM32\2\METHODS\COOLING.M		
Last changed	: 21-Aug-20 3:09:51 PM by SYSTEM		
	(modified after loading)		



=====  
Area Percent Report  
=====

Sorted By : Signal  
Multiplier : 1.0000  
Dilution : 1.0000  
Do not use Multiplier & Dilution Factor with ISTDs

Signal 1: FID1 A, Front Signal

Peak #	RetTime [min]	Type	Width [min]	Area [pA*s]	Height [pA]	Area %
1	11.689	BB	0.0521	14.28845	4.05111	0.01276
2	12.786	BB	0.0459	9.30709	3.20239	0.00831
3	13.535	BB	0.0722	16.97226	3.52443	0.01516
4	14.900	BB	0.1984	1.11619e5	6733.19922	99.67939
5	15.526	BB	0.0797	52.37258	8.88943	0.04677
6	15.970	BB	0.0444	38.16872	13.34406	0.03409
7	17.257	BB	0.0463	93.80347	30.98365	0.08377
8	18.059	BB	0.0594	34.68897	8.71985	0.03098

Peak #	RetTime [min]	Type	Width [min]	Area [pA*s]	Height [pA]	Area %
9	29.999	BB	0.0695	56.33537	12.50787	0.05031
10	30.506	BB	0.0734	43.07883	8.46465	0.03847

Totals : 1.11978e5 6826.88666

=====  
\*\*\* End of Report \*\*\*