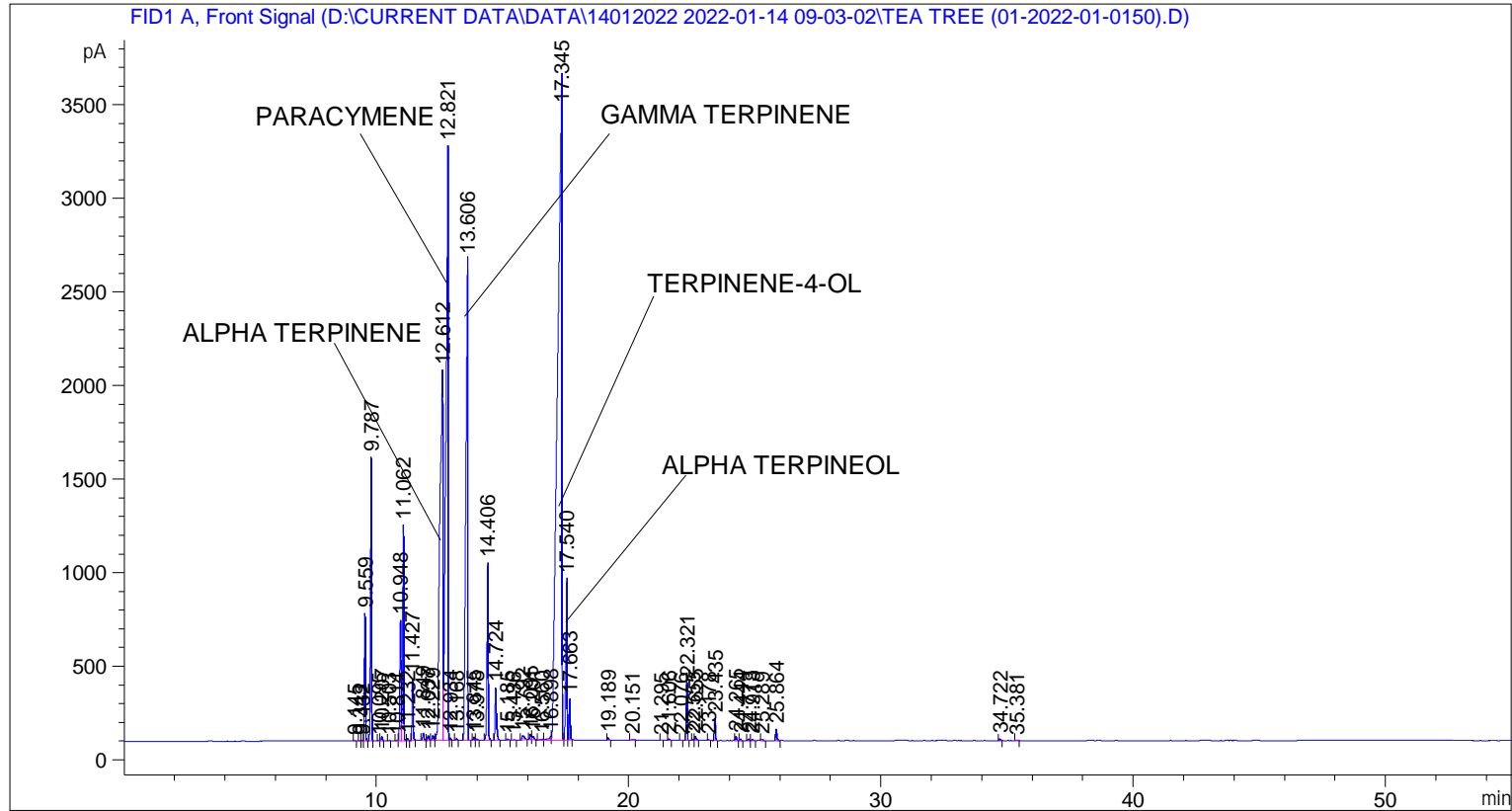


```
=====
Acq. Operator   : SYSTEM                               Seq. Line :    2
Acq. Instrument : BMV_NEW_GC_7820                     Location  : Vial 102
Injection Date  : 14-Jan-22 10:18:33 AM                Inj       :    1
                                                    Inj Volume: 0.5 µl

Acq. Method     : D:\CURRENT DATA\DATA\14012022 2022-01-14 09-03-02\UNIVERSAL BMV.M
Last changed    : 14-Jan-22 9:03:02 AM by SYSTEM
Analysis Method : C:\CHEM32\2\METHODS\COOLING.M
Last changed    : 02-Mar-22 3:24:07 PM by SYSTEM
                (modified after loading)
=====
```



=====
 Area Percent Report
 =====

```
Sorted By      : Signal
Multiplier     : 1.0000
Dilution       : 1.0000
Do not use Multiplier & Dilution Factor with ISTDs
```

Signal 1: FID1 A, Front Signal

Peak #	RetTime [min]	Type	Width [min]	Area [pA*s]	Height [pA]	Area %
1	9.145	BB	0.0403	6.20230	2.46574	0.00534
2	9.343	BV	0.0421	4.52530	1.69858	0.00390
3	9.432	VV	0.0447	12.48880	4.45605	0.01076
4	9.559	VB	0.0483	2064.99536	683.02820	1.77922
5	9.787	BB	0.0447	4644.61377	1518.30286	4.00185
6	10.095	BV	0.0440	13.63815	4.54321	0.01175
7	10.207	VB	0.0521	80.44006	23.40577	0.06931
8	10.503	BB	0.0469	8.03753	2.54375	0.00693

Peak #	RetTime [min]	Type	Width [min]	Area [pA*s]	Height [pA]	Area %
9	10.814	BV	0.0553	11.87876	3.43601	0.01023
10	10.948	VV	0.0589	2368.12256	643.74060	2.04040
11	11.062	VB	0.0461	3468.98218	1151.46460	2.98891
12	11.232	BB	0.0462	33.82748	11.21199	0.02915
13	11.427	BB	0.0467	1009.36920	329.47986	0.86968
14	11.849	BB	0.0603	142.13982	37.43958	0.12247
15	12.037	BB	0.0545	90.65707	26.78757	0.07811
16	12.229	BV	0.0675	102.49752	24.64711	0.08831
17	12.612	VV	0.1055	1.63722e4	1979.98376	14.10644
18	12.821	VV	0.0754	1.80497e4	3173.43921	15.55184
19	12.934	VB	0.0405	35.94268	13.73970	0.03097
20	13.168	BB	0.0476	29.45945	9.64203	0.02538
21	13.606	BB	0.0728	1.36051e4	2568.53174	11.72234
22	13.845	BB	0.0413	51.56815	19.86876	0.04443
23	13.978	BB	0.0507	22.68530	6.83602	0.01955
24	14.406	BB	0.0478	3067.08789	946.57129	2.64264
25	14.724	BB	0.0619	1109.12573	281.93906	0.95563
26	15.185	BB	0.0693	34.17851	6.95360	0.02945
27	15.436	BB	0.0724	16.68253	3.06972	0.01437
28	15.792	BB	0.0946	159.92644	23.43118	0.13779
29	16.095	BV	0.0626	140.09904	32.33139	0.12071
30	16.201	VB	0.0690	90.19337	19.84751	0.07771
31	16.560	BV	0.1106	48.04504	5.41162	0.04140
32	16.898	VV	0.0889	129.86861	19.71366	0.11190
33	17.345	VV	0.1484	4.34267e4	3558.67212	37.41691
34	17.540	VV	0.0523	3050.65894	861.18982	2.62848
35	17.663	VB	0.0408	560.92560	219.33250	0.48330
36	19.189	BB	0.0505	40.93740	12.09652	0.03527
37	20.151	BB	0.0916	31.30107	4.42113	0.02697
38	21.295	BB	0.0454	5.85498	2.04625	0.00504
39	21.606	BB	0.0447	26.28721	9.10203	0.02265
40	22.076	BB	0.0426	4.99616	1.90735	0.00430
41	22.321	BB	0.0487	952.28320	311.53204	0.82050
42	22.555	BV	0.0427	12.51250	4.59789	0.01078
43	22.655	VB	0.0587	87.82824	21.95831	0.07567
44	23.178	BB	0.0413	11.29249	4.34889	0.00973
45	23.435	BB	0.0485	365.10712	119.86605	0.31458
46	24.265	BB	0.0482	69.20297	22.28395	0.05963
47	24.444	BB	0.0510	31.70704	9.48000	0.02732
48	24.773	BV	0.0599	36.20488	8.81152	0.03119
49	24.918	VB	0.0600	31.94616	7.59882	0.02753
50	25.289	BB	0.0852	41.45087	6.89199	0.03571
51	25.864	BB	0.0511	203.28592	62.23375	0.17515
52	34.722	BB	0.0543	34.30430	9.68060	0.02956
53	35.381	BB	0.0554	12.57885	3.30696	0.01084

Totals : 1.16062e5 1.88413e4

=====
 *** End of Report ***