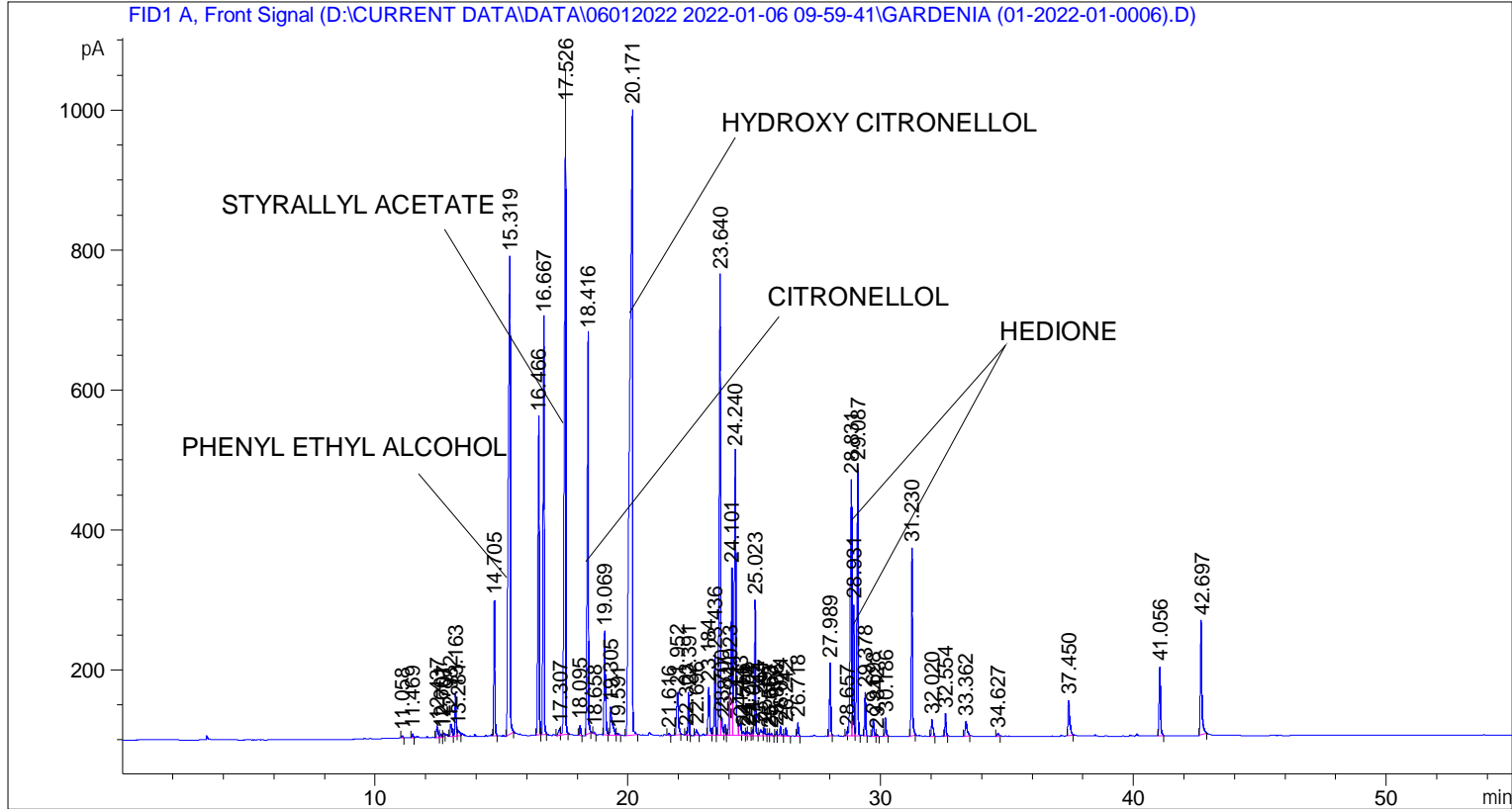


```

=====
Acq. Operator   : SYSTEM                               Seq. Line :    2
Acq. Instrument : BMV_NEW_GC_7820                     Location  : Vial 102
Injection Date  : 06-Jan-22 11:15:02 AM                Inj       :    1
                                                    Inj Volume: 0.5 µl

Acq. Method     : D:\CURRENT DATA\DATA\06012022 2022-01-06 09-59-41\UNIVERSAL BMV.M
Last changed    : 06-Jan-22 9:59:51 AM by SYSTEM
Analysis Method : C:\CHEM32\2\METHODS\COOLING.M
Last changed    : 02-Mar-22 5:01:47 PM by SYSTEM
                (modified after loading)

Additional Info : Peak(s) manually integrated
  
```



=====  
 Area Percent Report  
 =====

```

Sorted By       : Signal
Multiplier      : 1.0000
Dilution       : 1.0000
Do not use Multiplier & Dilution Factor with ISTDs
  
```

Signal 1: FID1 A, Front Signal

Peak #	RetTime [min]	Type	Width [min]	Area [pA*s]	Height [pA]	Area %
1	11.058	BB	0.0457	9.63753	3.06391	0.02647
2	11.469	BB	0.0477	15.65625	4.98334	0.04300
3	12.437	BB	0.0608	69.86454	17.05486	0.19190
4	12.601	BV	0.0452	14.79531	4.89727	0.04064
5	12.707	VB	0.0428	16.87382	5.34356	0.04635
6	12.982	BV	0.0713	85.69233	18.42473	0.23538
7	13.163	VV	0.0521	214.25638	62.40121	0.58852

Peak #	RetTime [min]	Type	Width [min]	Area [pA*s]	Height [pA]	Area %
8	13.281	VV	0.0734	41.81626	7.57164	0.11486
9	14.705	BB	0.0465	572.20251	193.23958	1.57172
10	15.319	BB	0.0671	3454.05811	682.16260	9.48759
11	16.466	BV	0.0553	1728.86243	455.33698	4.74883
12	16.667	VB	0.0469	1987.20349	595.62286	5.45844
13	17.307	BV	0.0660	47.68755	9.76755	0.13099
14	17.526	VB	0.0555	3927.97046	945.18982	10.78933
15	18.095	BB	0.0435	41.59440	14.49236	0.11425
16	18.416	BB	0.0506	2042.24951	572.74469	5.60964
17	18.658	BB	0.0447	6.49242	2.24908	0.01783
18	19.069	BB	0.0523	536.99042	148.05225	1.47500
19	19.305	BB	0.0829	242.70541	40.48740	0.66666
20	19.591	BB	0.0784	17.83186	3.13233	0.04898
21	20.171	BB	0.0999	7035.42920	893.60205	19.32488
22	21.616	BB	0.0492	10.11620	3.17451	0.02779
23	21.952	BB	0.0685	307.13043	61.28732	0.84362
24	22.303	BV	0.0423	16.25791	5.87322	0.04466
25	22.391	VB	0.0454	181.91200	61.62009	0.49968
26	22.696	BB	0.0690	38.61618	8.04676	0.10607
27	23.184	BV	0.0627	284.82504	68.22517	0.78236
28	23.436	VV	0.0504	378.66611	115.05059	1.04012
29	23.640	VV	0.0577	2406.15698	657.91541	6.60922
30	23.700	VV	0.0451	78.60564	24.73505	0.21591
31	23.837	VV	0.0492	51.78027	15.81253	0.14223
32	24.023	VV	0.0404	171.71800	59.99619	0.47167
33	24.101	VV	0.0526	873.91858	239.06796	2.40048
34	24.240	VV	0.0575	1652.34521	405.91562	4.53865
35	24.443	VV	0.0787	99.19952	17.35197	0.27248
36	24.556	VV	0.0643	26.81184	6.09478	0.07365
37	24.702	VV	0.0532	21.09292	5.82985	0.05794
38	24.774	VB	0.0681	22.42441	4.58195	0.06160
39	24.922	BV	0.0458	26.22786	8.54556	0.07204
40	25.023	VB	0.0460	581.17236	193.86086	1.59636
41	25.244	BV	0.1001	62.03185	8.60751	0.17039
42	25.397	VV	0.0525	42.27768	11.61462	0.11613
43	25.563	VV	0.0607	15.30525	3.59001	0.04204
44	25.663	VB	0.0549	11.79172	3.36699	0.03239
45	25.866	BV	0.0505	21.14318	6.76373	0.05808
46	26.024	VV	0.0502	49.45212	14.72158	0.13583
47	26.242	VB	0.0502	40.58937	12.38134	0.11149
48	26.718	BB	0.0483	61.02478	19.61805	0.16762
49	27.989	BB	0.0495	325.65421	104.06886	0.89451
50	28.657	BV	0.0550	22.23951	6.03809	0.06109
51	28.831	VV	0.0581	1572.85498	366.10767	4.32031
52	28.931	VV	0.0434	521.03754	187.86745	1.43118
53	29.087	VB	0.0542	1363.49500	386.09943	3.74524
54	29.378	BB	0.0482	187.22693	62.05892	0.51427
55	29.698	BB	0.0610	92.44688	23.95592	0.25393
56	29.842	BB	0.0516	8.41261	2.53962	0.02311
57	30.186	BB	0.0545	94.18390	27.10112	0.25870
58	31.230	BB	0.0493	906.22827	269.18213	2.48922
59	32.020	BB	0.0611	102.41338	23.84803	0.28131
60	32.554	BB	0.0523	108.50168	32.22749	0.29803
61	33.362	BB	0.0744	112.67161	21.41393	0.30949

Peak #	RetTime [min]	Type	Width [min]	Area [pA*s]	Height [pA]	Area %
62	34.627	BB	0.0656	18.53150	3.95994	0.05090
63	37.450	BB	0.0686	240.28670	50.37574	0.66002
64	41.056	BB	0.0577	387.22903	98.89253	1.06364
65	42.697	BB	0.0629	700.18353	163.61757	1.92326

Totals : 3.64061e4 8552.82373

=====  
\*\*\* End of Report \*\*\*