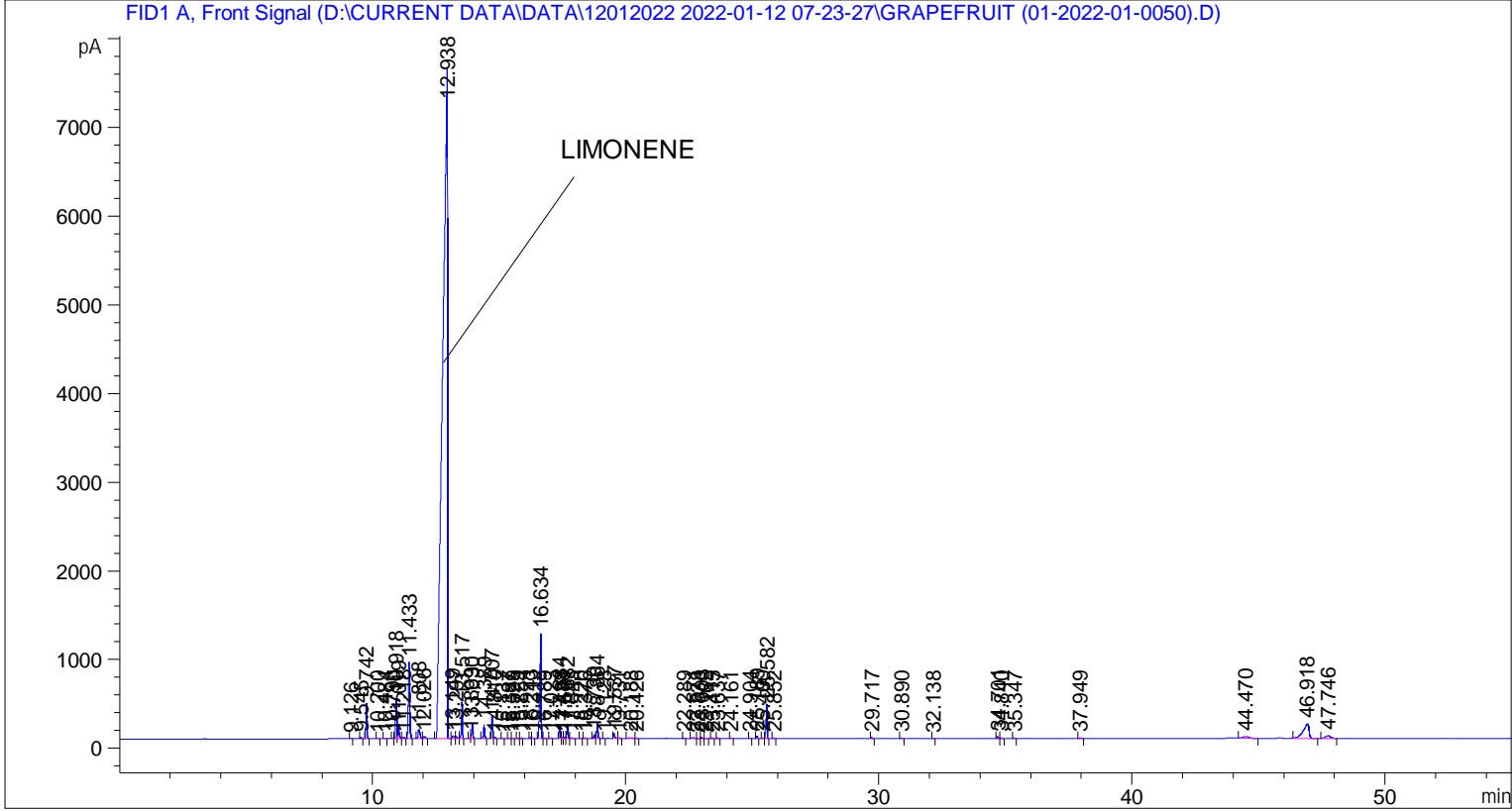


```
=====
Acq. Operator   : SYSTEM                               Seq. Line :    6
Acq. Instrument : BMV_NEW_GC_7820                     Location  : Vial 106
Injection Date  : 12-Jan-22 1:01:56 PM                 Inj       :    1
                                                    Inj Volume: 0.5 µl

Acq. Method     : D:\CURRENT DATA\DATA\12012022 2022-01-12 07-23-27\UNIVERSAL BMV.M
Last changed    : 12-Jan-22 7:23:38 AM by SYSTEM
Analysis Method : C:\CHEM32\2\METHODS\COOLING.M
Last changed    : 03-Mar-22 2:15:55 PM by SYSTEM
                  (modified after loading)

Additional Info : Peak(s) manually integrated
=====
```



=====  
 Area Percent Report  
 =====

```
Sorted By      : Signal
Multiplier     : 1.0000
Dilution      : 1.0000
Do not use Multiplier & Dilution Factor with ISTDs
```

Signal 1: FID1 A, Front Signal

Peak #	RetTime [min]	Type	Width [min]	Area [pA*s]	Height [pA]	Area %
1	9.126	BB	0.0409	12.28512	4.63110	0.01019
2	9.545	BB	0.0429	40.87688	14.96354	0.03392
3	9.742	BB	0.0448	1168.36877	402.86707	0.96940
4	10.200	BB	0.0502	17.95259	5.34254	0.01490
5	10.484	BB	0.0496	16.64651	5.15914	0.01381
6	10.790	BV	0.0477	17.23963	5.63306	0.01430
7	10.918	VV	0.0512	1481.44482	452.08563	1.22917

Peak #	RetTime [min]	Type	Width [min]	Area [pA*s]	Height [pA]	Area %
8	11.019	VB	0.0516	388.29117	114.46645	0.32217
9	11.218	BB	0.0607	49.29126	12.86433	0.04090
10	11.433	BB	0.0650	3545.58887	861.93402	2.94180
11	11.808	BV	0.0815	519.39655	101.81174	0.43095
12	12.026	VB	0.0793	115.40464	22.31310	0.09575
13	12.938	BV	0.1590	9.82973e4	7495.64258	81.55799
14	13.149	VV	0.0695	156.43718	30.68353	0.12980
15	13.297	VV	0.0564	96.56927	23.75316	0.08012
16	13.517	VB	0.0416	1074.29321	410.07642	0.89135
17	13.869	BV	0.0350	79.89618	34.54852	0.06629
18	13.930	VB	0.0437	478.90704	165.80385	0.39735
19	14.389	BB	0.0456	459.26935	154.68634	0.38106
20	14.707	BV	0.0419	688.23376	251.64230	0.57103
21	14.810	VB	0.0474	43.12246	14.20671	0.03578
22	15.137	BB	0.0417	5.87826	2.16548	0.00488
23	15.387	BB	0.0486	6.13874	2.00972	0.00509
24	15.529	BB	0.0428	9.16701	3.25954	0.00761
25	15.729	BB	0.0443	11.18715	3.80423	0.00928
26	15.854	BB	0.0424	16.19029	6.02444	0.01343
27	16.243	BV	0.0445	36.72538	12.78390	0.03047
28	16.319	VB	0.0429	15.00765	5.31648	0.01245
29	16.634	BB	0.0551	4458.55225	1180.79126	3.69929
30	16.789	BB	0.0518	13.63624	3.99447	0.01131
31	17.023	BB	0.0531	19.45299	5.26762	0.01614
32	17.384	BV	0.0461	458.03986	156.72816	0.38004
33	17.488	VV	0.0475	22.88234	6.92617	0.01899
34	17.581	VV	0.0507	44.46709	13.39317	0.03689
35	17.682	VB	0.0445	443.27939	154.39418	0.36779
36	17.843	BB	0.0650	20.67506	4.38526	0.01715
37	18.220	BB	0.0515	8.98818	2.52590	0.00746
38	18.376	BB	0.0636	24.79151	5.50132	0.02057
39	18.739	BV	0.0513	127.88140	39.00094	0.10610
40	18.864	VB	0.0463	526.31842	179.17717	0.43669
41	19.128	BB	0.0484	8.25720	2.50996	0.00685
42	19.537	BV	0.0568	218.38594	55.66827	0.18120
43	19.731	VB	0.0531	23.94163	6.48234	0.01986
44	20.188	BV	0.1299	59.38439	5.59040	0.04927
45	20.426	VB	0.0515	13.24722	3.91537	0.01099
46	22.289	BB	0.0452	20.15491	6.86617	0.01672
47	22.671	BV	0.0815	63.73611	10.84888	0.05288
48	22.838	VB	0.0657	13.93736	2.97029	0.01156
49	23.003	BB	0.0546	54.05098	14.80889	0.04485
50	23.165	BB	0.0570	9.86824	2.55906	0.00819
51	23.415	BB	0.0491	25.24151	8.15000	0.02094
52	23.637	BB	0.0469	28.21377	9.43207	0.02341
53	24.161	BB	0.0574	21.25880	5.45927	0.01764
54	24.904	BB	0.0516	15.75700	4.64517	0.01307
55	25.189	BB	0.0433	72.56465	24.64962	0.06021
56	25.400	BV	0.0494	17.04211	5.18117	0.01414
57	25.582	VB	0.0475	1205.52405	385.22656	1.00023
58	25.852	BB	0.0542	28.20671	7.61032	0.02340
59	29.717	BB	0.0539	45.40749	12.63440	0.03767
60	30.890	BB	0.0609	27.39055	6.67778	0.02273
61	32.138	BB	0.0506	11.58108	3.32872	0.00961

Peak #	RetTime [min]	Type	Width [min]	Area [pA*s]	Height [pA]	Area %
62	34.701	BV	0.0494	74.99628	24.00550	0.06222
63	34.840	VB	0.0616	44.53737	10.91163	0.03695
64	35.347	BB	0.0489	26.80749	8.97399	0.02224
65	37.949	BB	0.0745	48.32780	9.17231	0.04010
66	44.470	BB	0.2052	308.61908	18.34765	0.25606
67	46.918	BB	0.1907	2604.58691	163.63908	2.16105
68	47.746	BB	0.1665	417.32635	30.72688	0.34626

Totals : 1.20524e5 1.32236e4

=====  
\*\*\* End of Report \*\*\*