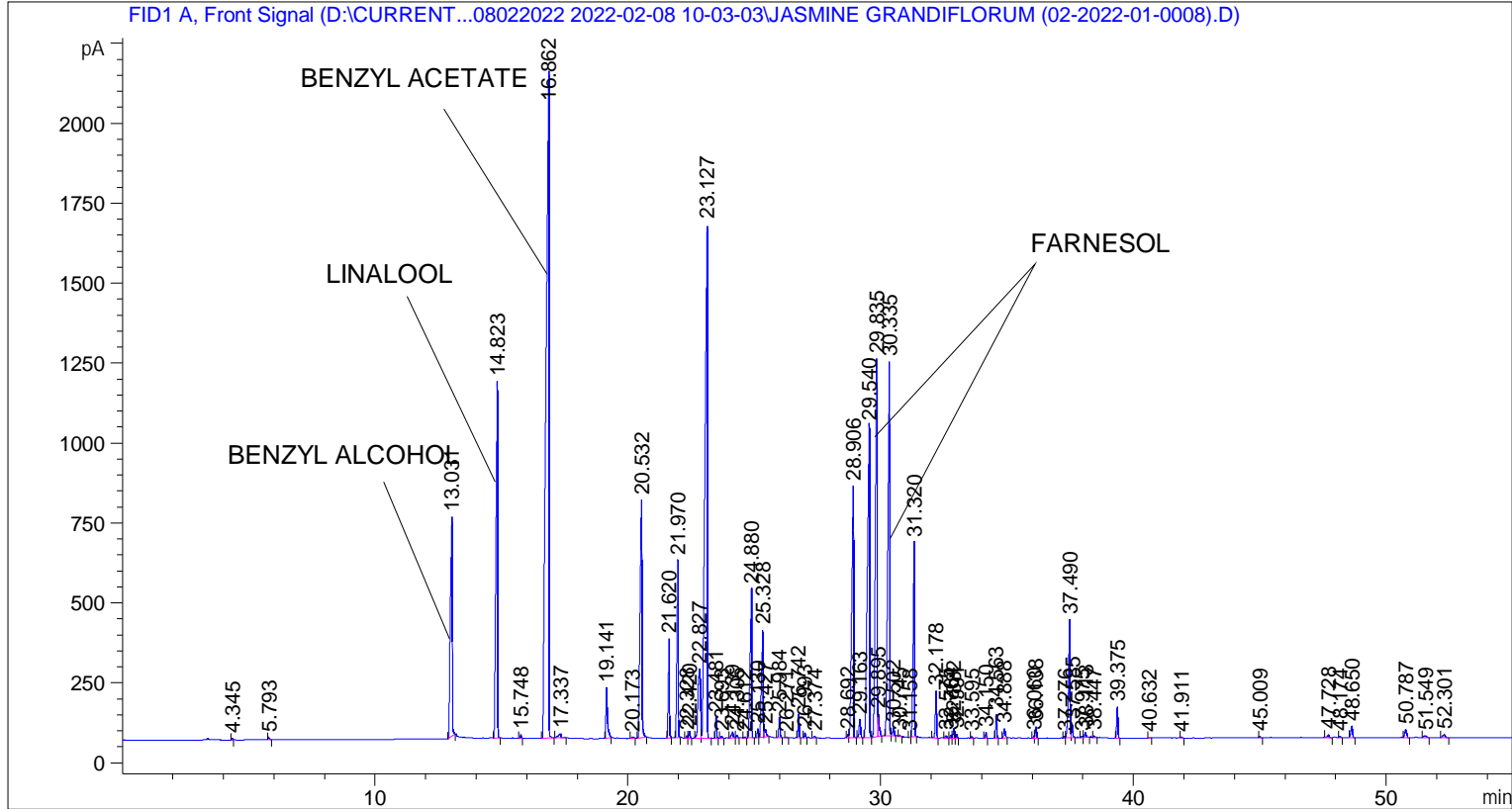


```

=====
Acq. Operator   : SYSTEM                               Seq. Line :    2
Acq. Instrument : BMV_NEW_GC_7820                     Location  : Vial 102
Injection Date  : 08-Feb-22 11:18:30 AM              Inj       :    1
                                                    Inj Volume: 0.5 µl

Acq. Method     : D:\CURRENT DATA\DATA\08022022 2022-02-08 10-03-03\UNIVERSAL BMV.M
Last changed    : 08-Feb-22 10:03:13 AM by SYSTEM
Analysis Method : C:\CHEM32\2\METHODS\COOLING.M
Last changed    : 03-Mar-22 1:20:06 PM by SYSTEM
                (modified after loading)

Additional Info : Peak(s) manually integrated
  
```



Area Percent Report

```

Sorted By      :      Signal
Multiplier     :      1.0000
Dilution       :      1.0000
Do not use Multiplier & Dilution Factor with ISTDs
  
```

Signal 1: FID1 A, Front Signal

Peak #	RetTime [min]	Type	Width [min]	Area [pA*s]	Height [pA]	Area %
1	4.345	BB	0.0376	11.61092	4.57245	0.01485
2	5.793	BB	0.0498	30.01215	8.58328	0.03839
3	13.031	BB	0.0698	3638.62354	687.03510	4.65426
4	14.823	BB	0.0613	5086.41162	1113.75610	6.50617
5	15.748	BB	0.0475	38.47166	12.28267	0.04921
6	16.862	BB	0.1031	1.67983e4	2083.08423	21.48722
7	17.337	BB	0.1042	111.10712	13.33976	0.14212

Sample Name: JASMINE GRANDIFLORUM (02-2022-01-0008)

Peak #	RetTime [min]	Type	Width [min]	Area [pA*s]	Height [pA]	Area %
8	19.141	BB	0.0618	672.64661	157.66046	0.86040
9	20.173	BB	0.0768	25.60334	4.83479	0.03275
10	20.532	BB	0.0687	3865.96265	742.45630	4.94506
11	21.620	BB	0.0498	1031.09521	309.70557	1.31890
12	21.970	BB	0.0518	2032.29163	554.08215	2.59956
13	22.328	BV	0.0523	27.82538	8.48627	0.03559
14	22.420	VB	0.0454	65.64960	22.23484	0.08397
15	22.827	BV	0.0970	1483.71814	216.29953	1.89786
16	23.127	VB	0.0813	1.05177e4	1607.69983	13.45345
17	23.481	BB	0.0467	195.02173	65.65766	0.24946
18	23.693	BB	0.0563	23.24250	6.11442	0.02973
19	24.139	BV	0.0671	102.56925	19.59577	0.13120
20	24.305	VB	0.0513	29.93794	8.88491	0.03829
21	24.612	BB	0.0534	10.94206	3.23662	0.01400
22	24.880	BB	0.0601	2069.71240	463.84747	2.64743
23	25.130	BV	0.0495	89.22583	28.55474	0.11413
24	25.328	VV	0.0618	1549.51465	336.21716	1.98203
25	25.427	VB	0.0630	104.97686	23.53202	0.13428
26	25.984	BB	0.0504	209.18959	63.55185	0.26758
27	26.271	BB	0.0465	6.63961	2.30983	0.00849
28	26.742	BB	0.0465	223.38753	75.59469	0.28574
29	26.993	BB	0.0478	44.74181	14.58441	0.05723
30	27.374	BB	0.0547	17.33021	4.97248	0.02217
31	28.692	BV	0.0515	36.01660	10.37723	0.04607
32	28.906	VB	0.0648	3891.49707	785.62665	4.97772
33	29.163	BB	0.0631	239.48320	58.06369	0.30633
34	29.540	BV	0.0741	5697.43359	975.95380	7.28774
35	29.835	VV	0.0654	5813.57275	1180.65442	7.43630
36	29.895	VB	0.0444	224.09970	69.94039	0.28665
37	30.335	BV	0.0659	5793.54346	1168.26392	7.41068
38	30.502	VB	0.0544	88.08403	24.21535	0.11267
39	30.745	BB	0.0475	11.86577	3.69028	0.01518
40	31.158	BV	0.0390	4.54191	1.89105	0.00581
41	31.320	VB	0.0602	2404.21704	606.97717	3.07530
42	32.178	BB	0.0517	486.52121	146.67419	0.62232
43	32.575	BB	0.0655	30.41842	7.46410	0.03891
44	32.764	BV	0.0503	31.98046	10.01119	0.04091
45	32.882	VV	0.0482	99.13248	31.08476	0.12680
46	32.991	VB	0.0525	45.58667	13.80662	0.05831
47	33.595	BB	0.0460	13.73378	4.57732	0.01757
48	34.150	BB	0.0483	54.35907	17.45349	0.06953
49	34.563	BB	0.0489	234.46761	74.06320	0.29991
50	34.888	BB	0.0646	124.31784	29.25621	0.15902
51	36.060	BV	0.0425	20.62770	7.39817	0.02639
52	36.138	VB	0.0515	116.55505	35.35617	0.14909
53	37.276	BV	0.0468	18.21548	5.77604	0.02330
54	37.490	VV	0.0583	1528.85706	369.08829	1.95560
55	37.585	VB	0.0524	148.60234	40.84961	0.19008
56	37.975	BV	0.0553	17.62677	5.10098	0.02255
57	38.113	VB	0.0606	58.38344	14.32012	0.07468
58	38.447	BB	0.0617	24.82313	5.94313	0.03175
59	39.375	BB	0.0509	315.44623	97.18439	0.40350
60	40.632	BB	0.0476	6.38886	2.09120	0.00817
61	41.911	BB	0.0574	13.68274	3.51979	0.01750

Peak #	RetTime [min]	Type	Width [min]	Area [pA*s]	Height [pA]	Area %
62	45.009	BB	0.0499	12.72992	4.02003	0.01628
63	47.728	BB	0.0767	46.90317	8.72745	0.06000
64	48.174	BB	0.0581	11.27406	3.05218	0.01442
65	48.650	BB	0.0679	163.33920	35.38762	0.20893
66	50.787	BB	0.0779	134.06720	24.88293	0.17149
67	51.549	BB	0.0889	37.25816	5.50770	0.04766
68	52.301	BB	0.0923	65.16028	9.23936	0.08335

Totals : 7.81783e4 1.45603e4

=====  
\*\*\* End of Report \*\*\*