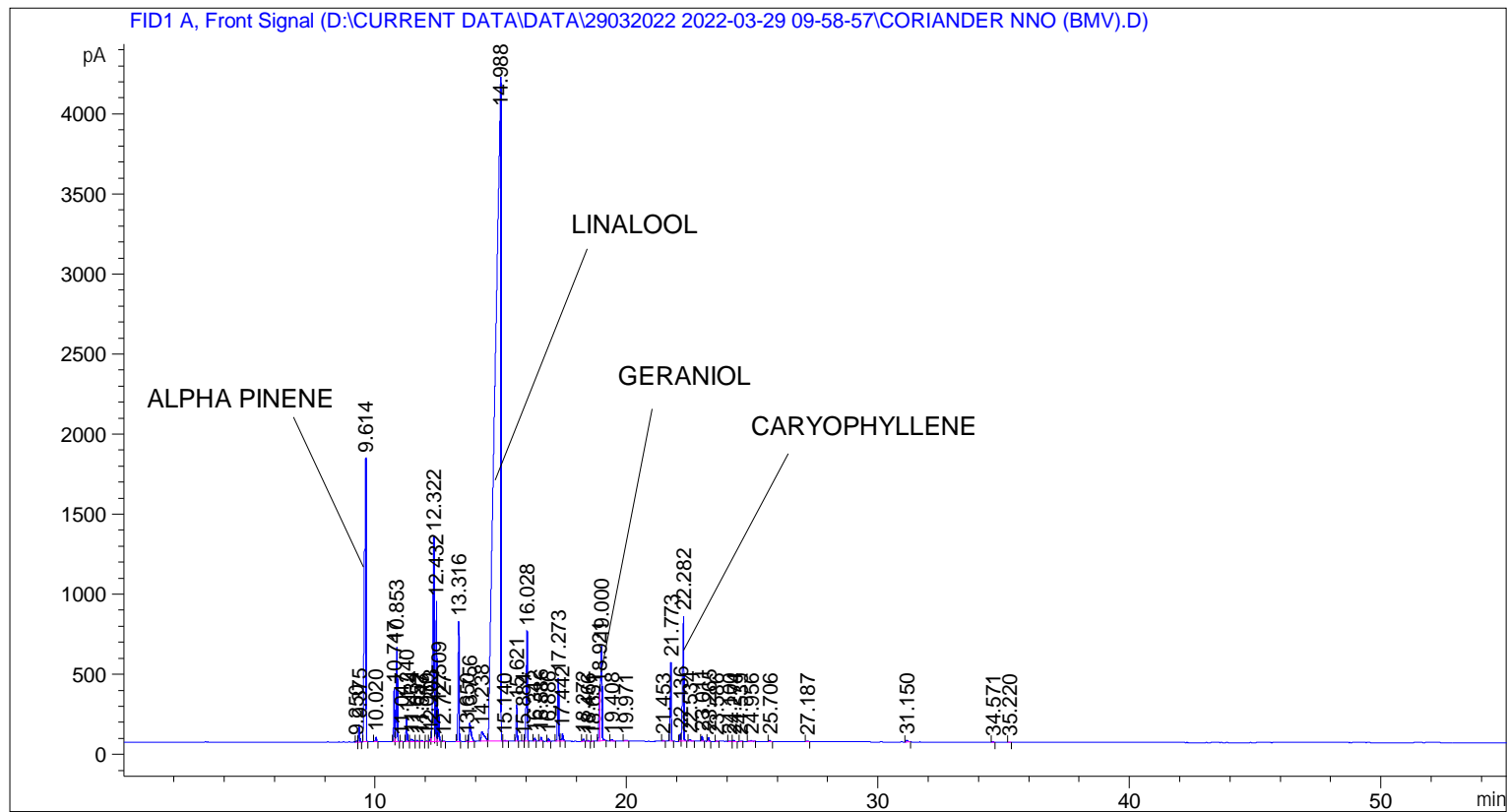


```

=====
Acq. Operator   : SYSTEM                               Seq. Line :    4
Acq. Instrument : BMV_NEW_GC_7820                     Location  : Vial 104
Injection Date  : 29-Mar-22 1:29:41 PM                 Inj       :    1
                                                    Inj Volume: 0.5 µl

Acq. Method     : D:\CURRENT DATA\DATA\29032022 2022-03-29 09-58-57\UNIVERSAL BMV.M
Last changed    : 29-Mar-22 9:59:08 AM by SYSTEM
Analysis Method : C:\CHEM32\2\METHODS\COOLING.M
Last changed    : 05-Nov-20 11:10:00 AM by SYSTEM
  
```



=====
 Area Percent Report
 =====

```

Sorted By      : Signal
Multiplier    : 1.0000
Dilution      : 1.0000
Do not use Multiplier & Dilution Factor with ISTDs
  
```

Signal 1: FID1 A, Front Signal

Peak #	RetTime [min]	Type	Width [min]	Area [pA*s]	Height [pA]	Area %
1	9.250	BV	0.0403	14.83493	5.72076	0.01501
2	9.375	VB	0.0435	306.85809	110.23991	0.31043
3	9.614	BB	0.0483	5825.01660	1772.46155	5.89289
4	10.020	BB	0.0467	88.42643	28.09357	0.08946
5	10.747	BV	0.0453	950.07886	332.99860	0.96115
6	10.853	VB	0.0424	1587.59204	590.20569	1.60609
7	11.047	BB	0.0446	14.89853	5.01956	0.01507
8	11.240	BB	0.0426	429.17395	153.46085	0.43417
9	11.434	BB	0.0738	90.83957	16.35618	0.09190

Sample Name: CORIANDER NNO (BMV)

Peak #	RetTime [min]	Type	Width [min]	Area [pA*s]	Height [pA]	Area %
10	11.652	BB	0.0565	40.30939	10.80134	0.04078
11	11.847	BB	0.0447	26.03442	9.01778	0.02634
12	12.039	BB	0.0421	12.03595	4.37184	0.01218
13	12.203	BV	0.0389	69.98912	26.38551	0.07080
14	12.322	VV	0.0616	4892.90283	1278.91016	4.94991
15	12.432	VV	0.0445	2506.06201	872.80695	2.53526
16	12.509	VB	0.0390	506.39972	203.57408	0.51230
17	12.727	BB	0.0401	7.52854	3.01991	0.00762
18	13.316	BB	0.0448	2161.46655	747.13983	2.18665
19	13.650	BV	0.0401	13.30621	5.15019	0.01346
20	13.756	VB	0.0726	588.26532	117.08875	0.59512
21	14.238	BV	0.1169	528.62201	59.96288	0.53478
22	14.988	VV	0.1939	6.52454e4	4139.87549	66.00558
23	15.140	VB	0.0790	24.47517	4.32751	0.02476
24	15.621	BB	0.0441	632.80829	229.70569	0.64018
25	15.884	BV	0.0398	4.57644	1.79378	0.00463
26	16.028	VB	0.0493	2256.52563	687.40704	2.28282
27	16.342	BB	0.0432	53.94602	19.54898	0.05457
28	16.586	BB	0.0525	90.48122	25.44762	0.09154
29	16.886	BB	0.0463	57.27808	19.50676	0.05795
30	17.273	BV	0.0461	1220.20752	394.82513	1.23442
31	17.442	VB	0.0556	176.77316	47.28057	0.17883
32	18.272	BB	0.0487	51.25097	15.84504	0.05185
33	18.466	BB	0.0436	16.74311	5.99433	0.01694
34	18.651	BB	0.0537	12.20000	3.25742	0.01234
35	18.921	BV	0.0440	983.53821	327.78189	0.99500
36	19.000	VB	0.0560	2237.44312	592.68872	2.26351
37	19.408	BB	0.0685	39.03186	7.78516	0.03949
38	19.971	BB	0.0896	34.85258	4.98267	0.03526
39	21.453	BB	0.0563	24.69099	6.50654	0.02498
40	21.773	BB	0.0485	1536.08325	491.39914	1.55398
41	22.136	BV	0.0453	134.38284	47.01466	0.13595
42	22.282	VB	0.0564	2897.54419	779.57043	2.93130
43	22.534	BB	0.0701	55.50561	11.14012	0.05615
44	23.011	BB	0.0448	88.38695	30.49504	0.08942
45	23.265	BB	0.0482	77.54069	25.66557	0.07844
46	23.586	BB	0.0410	7.14770	2.97522	0.00723
47	24.100	BB	0.0533	16.05320	4.32722	0.01624
48	24.274	BB	0.0677	36.07975	8.64724	0.03650
49	24.539	BB	0.0654	11.98450	2.66958	0.01212
50	24.956	BB	0.0792	29.54264	4.83831	0.02989
51	25.706	BB	0.0519	27.22933	8.17148	0.02755
52	27.187	BB	0.0604	22.20287	5.23880	0.02246
53	31.150	BB	0.0803	60.94308	10.73042	0.06165
54	34.571	BB	0.0509	18.16387	5.59640	0.01838
55	35.220	BB	0.0479	6.65355	2.10218	0.00673

Totals : 9.88483e4 1.43279e4

*** End of Report ***