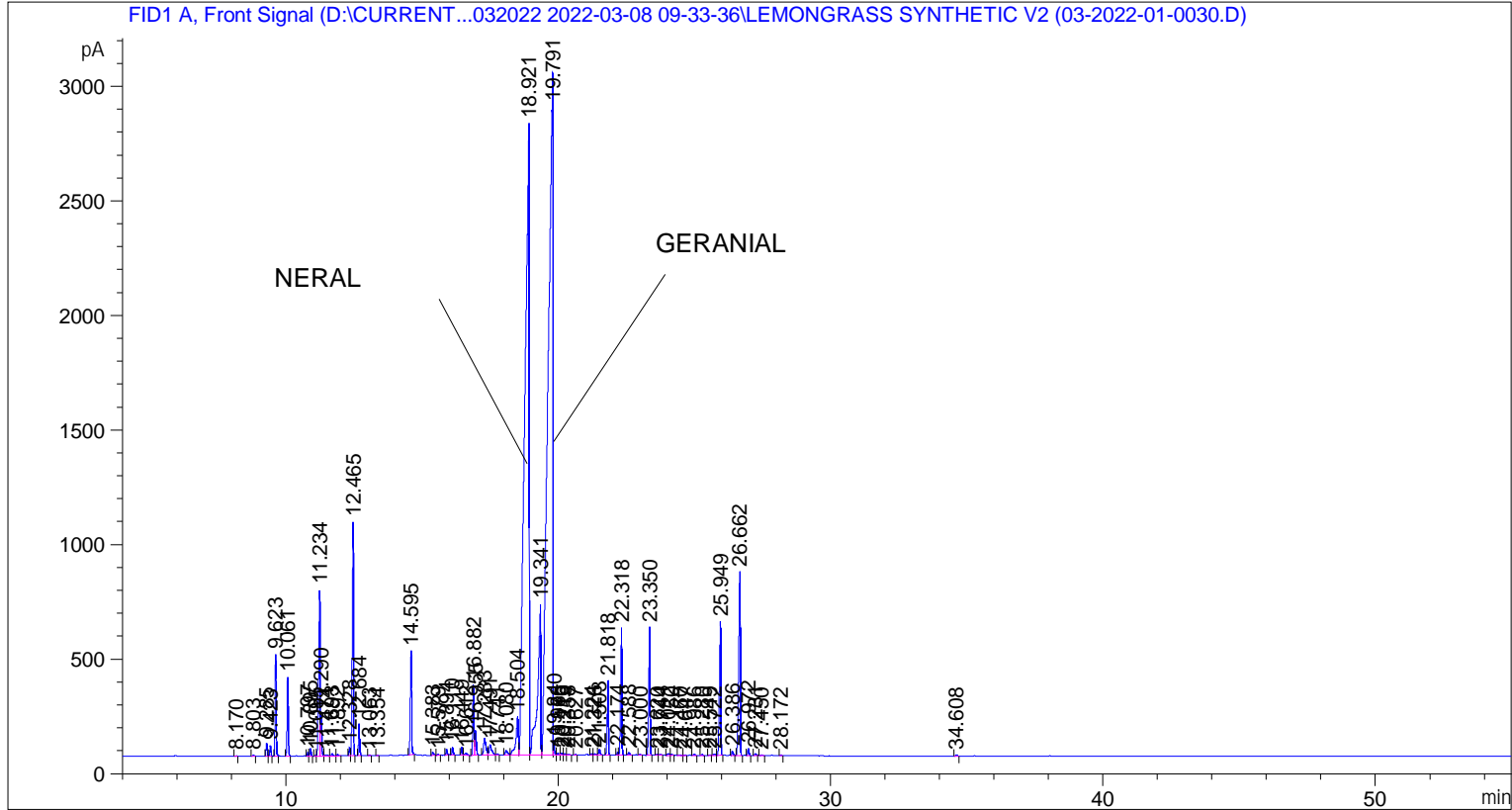


```

=====
Acq. Operator   : SYSTEM                               Seq. Line :    6
Acq. Instrument : BMV_NEW_GC_7820                     Location  : Vial 106
Injection Date  : 08-Mar-22 3:16:16 PM                Inj       :    1
                                                    Inj Volume: 0.5 µl

Acq. Method    : D:\CURRENT DATA\DATA\08032022 2022-03-08 09-33-36\UNIVERSAL BMV.M
Last changed   : 08-Mar-22 9:33:47 AM by SYSTEM
Analysis Method: C:\CHEM32\2\METHODS\COOLING.M
Last changed   : 08-Mar-22 4:19:28 PM by SYSTEM
                (modified after loading)
  
```



Peak #	RetTime [min]	Type	Width [min]	Area [pA*s]	Height [pA]	Area %
9	11.095	BV	0.0435	11.00550	4.07017	0.01126
10	11.234	VV	0.0533	2626.89502	725.07800	2.68668
11	11.290	VB	0.0424	492.12662	177.10735	0.50333
12	11.474	BB	0.1011	39.11391	5.23980	0.04000
13	11.693	BB	0.0601	39.93119	10.11077	0.04084
14	11.892	BB	0.0483	17.50514	5.63221	0.01790
15	12.328	BV	0.0445	99.48669	35.69727	0.10175
16	12.465	VB	0.0462	3165.02612	1018.72076	3.23706
17	12.684	BB	0.0420	380.11789	138.74678	0.38877
18	13.063	BB	0.0522	12.22979	3.46431	0.01251
19	13.354	BB	0.0432	6.54044	2.23167	0.00669
20	14.595	BB	0.0538	1510.75122	453.86737	1.54514
21	15.383	BB	0.0535	51.36029	14.10429	0.05253
22	15.579	BB	0.0581	17.25718	4.18637	0.01765
23	15.894	BB	0.0473	76.65988	24.62385	0.07840
24	16.110	BB	0.0468	109.70228	35.72699	0.11220
25	16.449	BV	0.0484	110.14011	35.32685	0.11265
26	16.612	VB	0.0795	53.40611	9.09089	0.05462
27	16.882	BV	0.0513	981.62177	306.69266	1.00396
28	16.955	VB	0.0511	374.76767	108.90082	0.38330
29	17.283	BV	0.0846	431.78635	71.32500	0.44161
30	17.491	VB	0.0862	267.41623	43.79201	0.27350
31	17.741	BB	0.0675	19.00978	4.06806	0.01944
32	18.080	BV	0.0849	120.79144	19.87456	0.12354
33	18.504	VV	0.0942	1105.60181	169.17043	1.13076
34	18.921	VV	0.1355	3.06092e4	2756.78516	31.30581
35	19.341	VV	0.1042	5421.44385	657.14545	5.54483
36	19.791	VV	0.1472	3.60373e4	2976.89746	36.85753
37	19.840	VB	0.0352	140.56511	60.31590	0.14376
38	19.986	BV	0.0663	42.86062	8.87809	0.04384
39	20.116	VV	0.0541	28.92468	7.82603	0.02958
40	20.219	VV	0.0576	20.04492	5.01786	0.02050
41	20.358	VB	0.0632	15.27099	3.62472	0.01562
42	20.627	BB	0.0514	9.02280	2.60787	0.00923
43	21.224	BV	0.0437	19.84597	6.86338	0.02030
44	21.326	VV	0.0714	32.26651	6.12777	0.03300
45	21.503	VB	0.0546	92.10832	25.20862	0.09420
46	21.818	BB	0.0456	957.96716	323.20956	0.97977
47	22.174	BV	0.0474	38.70797	13.11208	0.03959
48	22.318	VB	0.0500	1806.49377	555.24042	1.84761
49	22.588	BB	0.0621	50.42077	12.22561	0.05157
50	23.000	BB	0.0469	9.40061	3.23320	0.00961
51	23.350	BB	0.0507	1848.01599	556.43805	1.89008
52	23.620	BV	0.0467	12.91852	4.47494	0.01321
53	23.744	VB	0.0537	16.17598	4.63683	0.01654
54	24.022	BV	0.0747	39.23384	7.79866	0.04013
55	24.150	VB	0.0512	13.36141	3.87301	0.01367
56	24.460	BB	0.0674	14.77566	3.00291	0.01511
57	24.647	BB	0.0469	7.39523	2.40639	0.00756
58	24.986	BB	0.0603	16.98625	4.19391	0.01737
59	25.280	BB	0.0463	17.04201	5.79564	0.01743
60	25.549	BB	0.0688	16.27431	3.40186	0.01664
61	25.722	BV	0.0759	29.68681	6.09196	0.03036
62	25.949	VB	0.0559	2094.37866	583.15063	2.14205

Peak #	RetTime [min]	Type	Width [min]	Area [pA*s]	Height [pA]	Area %
63	26.386	BB	0.0543	62.52179	18.09188	0.06394
64	26.662	BB	0.0589	3221.54395	800.74768	3.29486
65	26.972	BB	0.0485	95.75668	30.60197	0.09794
66	27.231	BB	0.0556	24.58324	6.73792	0.02514
67	27.450	BB	0.0444	5.64370	1.86084	0.00577
68	28.172	BB	0.0439	7.80549	2.76650	0.00798
69	34.608	BB	0.0540	17.94029	5.36556	0.01835

Totals : 9.77747e4 1.38477e4

=====
*** End of Report ***