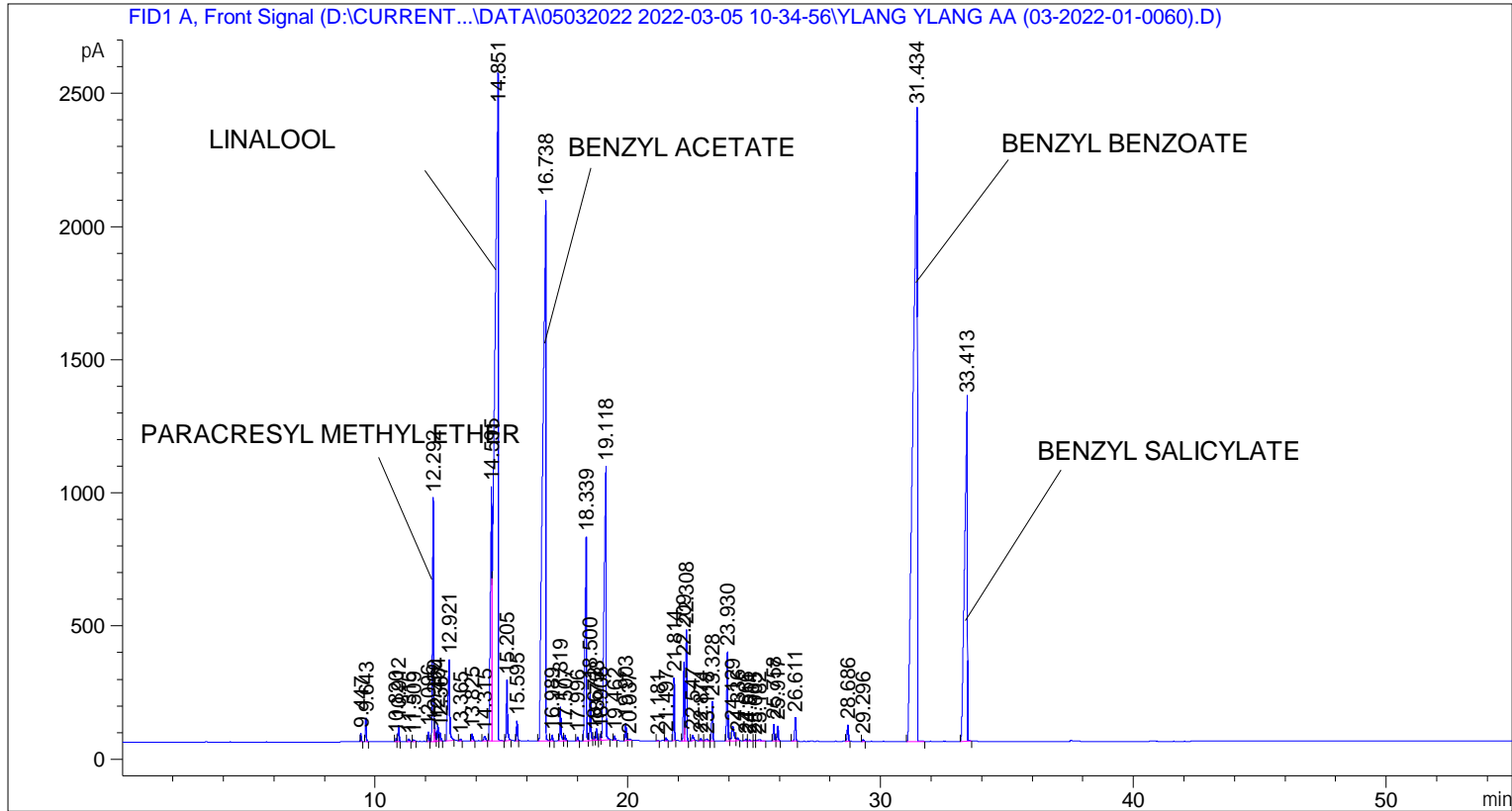


```

=====
Acq. Operator   : SYSTEM                               Seq. Line :    2
Acq. Instrument : BMV_NEW_GC_7820                     Location  : Vial 102
Injection Date  : 05-Mar-22 11:51:15 AM                Inj       :    1
                                                    Inj Volume: 0.5 µl

Acq. Method    : D:\CURRENT DATA\DATA\05032022 2022-03-05 10-34-56\UNIVERSAL BMV.M
Last changed   : 05-Mar-22 10:35:07 AM by SYSTEM
Analysis Method: C:\CHEM32\2\DATA\01042018 2018-04-01 09-29-18\UNIVERSAL F.M (Sequence
Method)
Last changed   : 09-Mar-22 3:14:45 PM by SYSTEM
                (modified after loading)
  
```



=====
 Area Percent Report
 =====

```

Sorted By       : Signal
Multiplier     : 1.0000
Dilution       : 1.0000
Do not use Multiplier & Dilution Factor with ISTDs
  
```

Signal 1: FID1 A, Front Signal

Peak #	RetTime [min]	Type	Width [min]	Area [pA*s]	Height [pA]	Area %
1	9.447	BB	0.0401	81.49408	31.62371	0.07812
2	9.643	BB	0.0420	236.50932	88.86694	0.22670
3	10.820	BV	0.0401	33.68806	13.03929	0.03229
4	10.912	VB	0.0436	173.31943	62.10287	0.16613
5	11.315	BB	0.0621	39.95702	10.10828	0.03830
6	11.509	BB	0.0562	20.41130	5.38346	0.01957
7	12.096	BB	0.0425	97.89687	36.24471	0.09384

Peak #	RetTime [min]	Type	Width [min]	Area [pA*s]	Height [pA]	Area %
8	12.292	BV	0.0546	3026.86890	914.04913	2.90139
9	12.350	VV	0.0402	140.00568	52.40030	0.13420
10	12.464	VV	0.0432	174.08154	61.21083	0.16687
11	12.567	VB	0.0440	91.41609	31.40381	0.08763
12	12.921	BB	0.0721	1596.34143	304.73190	1.53017
13	13.365	BB	0.0428	18.65953	6.83835	0.01789
14	13.825	BB	0.0556	96.25133	26.38856	0.09226
15	14.315	BB	0.0803	84.48772	16.08195	0.08099
16	14.595	BV	0.0581	4097.60254	954.85455	3.92774
17	14.851	VB	0.1116	2.27916e4	2518.73657	21.84675
18	15.205	BB	0.0566	809.83777	226.92613	0.77627
19	15.595	BB	0.0427	211.43373	75.34322	0.20267
20	16.738	BV	0.1037	1.67884e4	2026.40332	16.09243
21	16.989	VB	0.0471	63.63001	20.58974	0.06099
22	17.319	BB	0.0470	393.88461	127.73900	0.37756
23	17.507	BB	0.0501	66.16956	20.27698	0.06343
24	17.996	BB	0.0475	46.70796	14.91419	0.04477
25	18.339	BV	0.0598	3193.86621	763.98059	3.06147
26	18.500	VB	0.0451	606.01068	207.45996	0.58089
27	18.672	BV	0.0506	60.64520	17.42192	0.05813
28	18.753	VB	0.0474	135.19115	44.56048	0.12959
29	18.908	BV	0.0444	72.14771	24.48596	0.06916
30	19.118	VB	0.0688	5540.18848	1029.07996	5.31052
31	19.462	BB	0.0453	49.64322	16.88129	0.04759
32	19.903	BB	0.0463	197.33395	65.24545	0.18915
33	20.037	BB	0.0805	34.83281	5.92994	0.03339
34	21.181	BB	0.0401	4.68131	1.75466	0.00449
35	21.497	BB	0.0503	33.14287	10.09812	0.03177
36	21.814	BB	0.0446	677.69751	235.39973	0.64960
37	22.209	BV	0.0478	909.43469	296.28497	0.87173
38	22.308	VB	0.0470	1251.61255	417.09033	1.19973
39	22.547	BB	0.0643	94.66074	21.10149	0.09074
40	22.874	BB	0.0565	37.68526	9.88696	0.03612
41	23.118	BV	0.0890	46.10024	6.89669	0.04419
42	23.328	VB	0.0489	455.46207	147.81036	0.43658
43	23.930	BB	0.0482	1092.87402	333.90070	1.04757
44	24.129	BV	0.0876	352.42169	54.35155	0.33781
45	24.336	VB	0.0587	47.30772	11.82956	0.04535
46	24.666	BV	0.0548	30.10124	7.83944	0.02885
47	24.811	VB	0.0496	19.16782	5.50731	0.01837
48	25.005	BV	0.0534	12.17755	3.60198	0.01167
49	25.182	VB	0.0972	51.22552	6.48007	0.04910
50	25.758	BV	0.0474	192.16875	61.57883	0.18420
51	25.917	VB	0.0501	181.55371	57.16930	0.17403
52	26.611	BB	0.0493	292.54883	89.19508	0.28042
53	28.686	BB	0.0532	209.80524	60.92137	0.20111
54	29.296	BB	0.0533	25.10628	7.45805	0.02407
55	31.434	BB	0.1470	2.76450e4	2371.39380	26.49904
56	33.413	BB	0.0960	9592.26953	1287.05859	9.19463

Totals : 1.04325e5 1.53259e4

=====