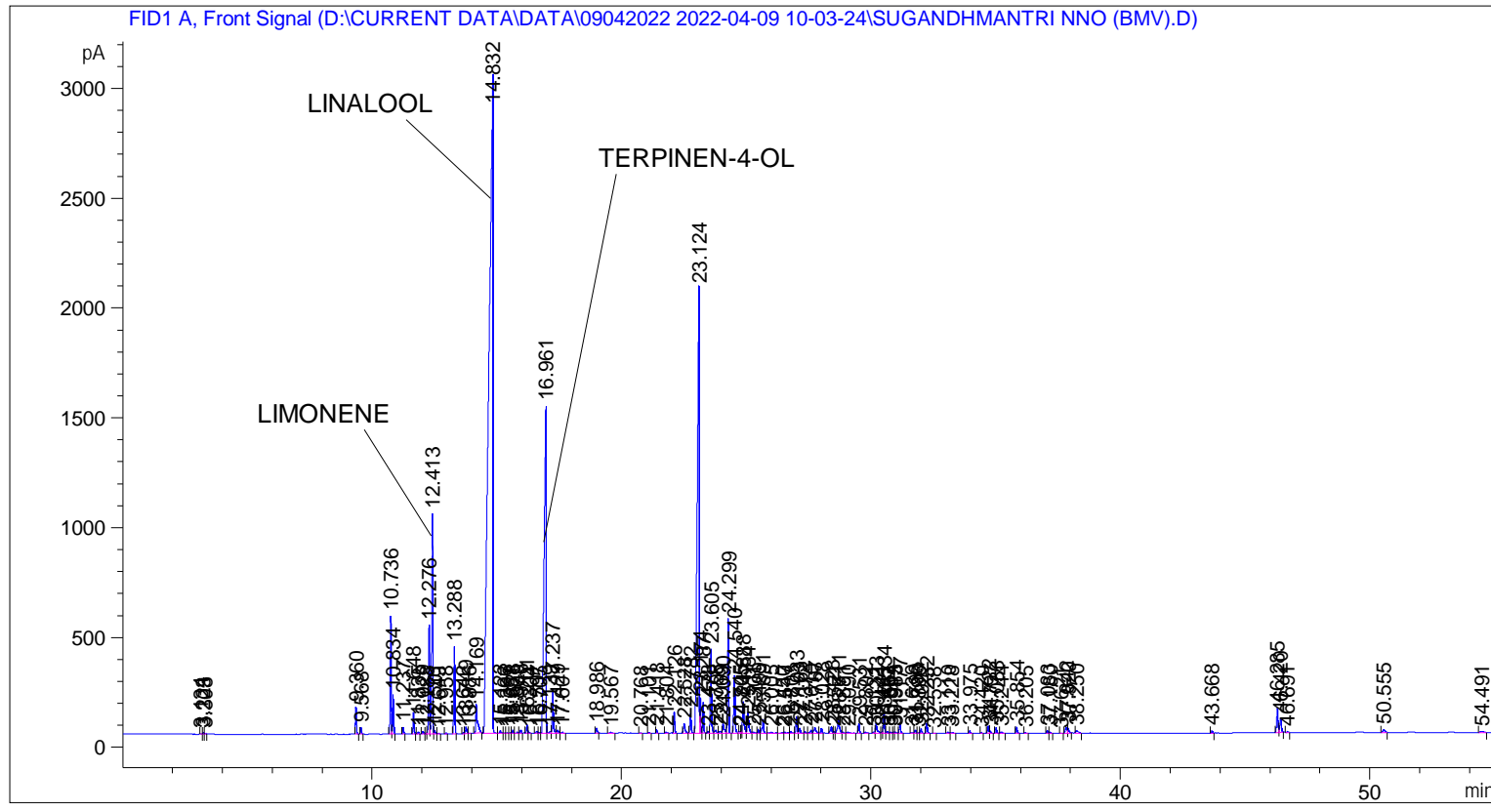


```

=====
Acq. Operator   : SYSTEM                               Seq. Line :    6
Acq. Instrument : BMV_NEW_GC_7820                     Location  : Vial 106
Injection Date  : 09-Apr-22 3:19:00 PM                 Inj       :    1
                                                    Inj Volume: 0.5 µl

Acq. Method    : D:\CURRENT DATA\DATA\09042022 2022-04-09 10-03-24\UNIVERSAL BMV.M
Last changed   : 09-Apr-22 10:03:36 AM by SYSTEM
Analysis Method : C:\CHEM32\2\METHODS\COOLING.M
Last changed   : 13-Apr-22 4:16:12 PM by SYSTEM
                (modified after loading)
  
```



=====
 Area Percent Report
 =====

```

Sorted By      : Signal
Multiplier    : 1.0000
Dilution      : 1.0000
Do not use Multiplier & Dilution Factor with ISTDs
  
```

Signal 1: FID1 A, Front Signal

Peak #	RetTime [min]	Type	Width [min]	Area [pA*s]	Height [pA]	Area %
1	3.134	BB	0.0322	5.87021	2.71251	0.00766
2	3.223	BV	0.0368	12.58900	5.28693	0.01642
3	3.308	VB	0.0340	6.03005	2.60959	0.00786
4	9.360	BB	0.0415	334.83911	124.10545	0.43665
5	9.568	BB	0.0435	82.14156	29.46134	0.10712
6	10.736	BV	0.0447	1509.34546	538.32794	1.96827
7	10.834	VB	0.0415	489.16122	181.05048	0.63789
8	11.237	BB	0.0426	87.10073	31.18886	0.11358

Peak #	RetTime [min]	Type	Width [min]	Area [pA*s]	Height [pA]	Area %
9	11.648	BB	0.0435	273.03601	97.88795	0.35605
10	11.835	BB	0.0445	28.70945	9.98747	0.03744
11	12.029	BB	0.0487	40.75014	12.97013	0.05314
12	12.188	BV	0.0412	15.59387	5.82340	0.02034
13	12.276	VV	0.0486	1556.98071	495.91214	2.03039
14	12.413	VV	0.0482	3107.93164	1002.06415	4.05292
15	12.501	VB	0.0489	50.57047	15.57385	0.06595
16	12.649	BB	0.0557	14.55853	3.79935	0.01899
17	12.958	BB	0.0429	12.63971	4.62274	0.01648
18	13.288	BB	0.0433	1095.21790	395.17542	1.42823
19	13.642	BV	0.0453	12.97580	4.29332	0.01692
20	13.749	VV	0.0590	117.47209	29.81672	0.15319
21	13.886	VB	0.0509	9.96834	2.84419	0.01300
22	14.169	BB	0.0637	613.44208	133.32156	0.79996
23	14.832	BV	0.1422	3.44506e4	2994.68481	44.92551
24	15.123	VV	0.0551	43.11750	10.91441	0.05623
25	15.306	VV	0.0501	7.70023	2.41891	0.01004
26	15.397	VV	0.0496	9.07885	2.74742	0.01184
27	15.551	VV	0.0441	11.95784	4.09254	0.01559
28	15.628	VV	0.0460	44.66734	14.87591	0.05825
29	15.809	VV	0.0609	22.91523	5.24985	0.02988
30	15.946	VV	0.0566	59.27127	15.84729	0.07729
31	16.201	BV	0.0484	128.65540	41.18583	0.16777
32	16.304	VV	0.0558	13.67382	3.64313	0.01783
33	16.597	BV	0.0725	52.79587	10.89831	0.06885
34	16.705	VV	0.0497	14.09759	4.48652	0.01838
35	16.961	VV	0.0726	8514.18359	1491.47729	11.10299
36	17.139	VV	0.0854	51.39529	8.39422	0.06702
37	17.237	VV	0.0475	633.85522	202.81648	0.82658
38	17.429	VV	0.0608	65.13191	15.90778	0.08494
39	17.601	VB	0.0642	22.29506	4.98184	0.02907
40	18.986	BB	0.0553	85.46199	22.49600	0.11145
41	19.567	BB	0.1032	41.92578	5.54739	0.05467
42	20.768	BB	0.0406	5.43924	2.21576	0.00709
43	21.101	BB	0.0462	12.98883	4.42949	0.01694
44	21.418	BB	0.0459	43.39368	14.94308	0.05659
45	21.804	BB	0.0702	20.59067	4.35562	0.02685
46	22.126	BB	0.0477	290.77322	94.98593	0.37919
47	22.528	BB	0.0665	196.61523	42.88936	0.25640
48	22.782	BB	0.0524	299.93805	88.84079	0.39114
49	23.124	BV	0.0749	1.14240e4	2022.25208	14.89753
50	23.174	VV	0.0312	320.99881	161.23729	0.41860
51	23.287	VB	0.0440	383.97772	139.90623	0.50073
52	23.478	BV	0.0488	19.35172	6.31309	0.02524
53	23.605	VV	0.0512	1252.68286	382.23431	1.63357
54	23.798	VV	0.0716	73.23653	14.10348	0.09550
55	23.969	VV	0.0761	46.07417	8.01106	0.06008
56	24.090	VV	0.0621	203.64804	47.37775	0.26557
57	24.299	VB	0.0513	1713.91565	522.04547	2.23504
58	24.540	BB	0.0526	897.00244	264.45294	1.16974
59	24.745	BV	0.0507	27.54289	7.89462	0.03592
60	24.805	VV	0.0379	23.94060	9.34781	0.03122
61	24.888	VV	0.0599	577.76697	143.83572	0.75344
62	25.084	VB	0.0599	385.10281	93.75231	0.50220

Peak #	RetTime [min]	Type	Width [min]	Area [pA*s]	Height [pA]	Area %
63	25.301	BV	0.0796	38.34300	6.42536	0.05000
64	25.499	VV	0.0476	51.32046	16.81104	0.06692
65	25.691	VB	0.0593	262.75790	63.52461	0.34265
66	26.005	BV	0.1249	49.13868	4.98954	0.06408
67	26.450	VV	0.0710	15.76684	3.22566	0.02056
68	26.547	VV	0.0734	35.01405	6.54243	0.04566
69	26.803	VV	0.0626	39.42799	8.74717	0.05142
70	27.033	VV	0.0501	239.06281	73.21202	0.31175
71	27.163	VV	0.0620	98.85369	22.63209	0.12891
72	27.372	VV	0.0633	35.42217	8.21831	0.04619
73	27.610	VV	0.0641	61.64208	14.35243	0.08038
74	27.767	VV	0.0815	155.65598	26.51668	0.20298
75	28.028	VV	0.0507	73.94572	22.85990	0.09643
76	28.428	BV	0.0657	129.35237	29.19595	0.16868
77	28.521	VV	0.0506	22.61015	7.20665	0.02948
78	28.711	VV	0.0734	334.34204	61.52806	0.43600
79	28.891	VV	0.0522	14.97054	4.13476	0.01952
80	29.090	VB	0.0916	37.43787	5.22665	0.04882
81	29.531	BB	0.0477	145.31326	45.00332	0.18950
82	29.802	BB	0.0654	23.98384	5.05184	0.03128
83	30.131	BV	0.0522	20.51295	6.10203	0.02675
84	30.223	VV	0.0688	216.34979	46.02908	0.28213
85	30.441	VV	0.0455	21.35536	7.01511	0.02785
86	30.534	VV	0.0504	322.52460	98.03825	0.42059
87	30.667	VV	0.0566	29.69801	7.59606	0.03873
88	30.804	VV	0.0602	19.47242	4.81820	0.02539
89	30.915	VV	0.0478	17.54251	5.55952	0.02288
90	30.983	VB	0.0557	25.57837	6.53539	0.03336
91	31.177	BB	0.0540	150.77457	41.92219	0.19662
92	31.639	BV	0.0631	18.94510	4.08750	0.02471
93	31.790	VV	0.0521	50.08800	14.95702	0.06532
94	31.896	VV	0.0437	6.09189	2.04938	0.00794
95	32.022	VB	0.0546	65.90646	18.95021	0.08595
96	32.252	BB	0.0526	153.15730	45.09443	0.19973
97	32.538	BB	0.0464	5.44083	1.96022	0.00710
98	33.110	BV	0.0667	23.14398	4.93798	0.03018
99	33.228	VB	0.0962	25.04471	3.46958	0.03266
100	33.975	BB	0.0500	40.14712	11.70129	0.05235
101	34.420	BB	0.0443	6.91840	2.42547	0.00902
102	34.722	BV	0.0558	125.37206	34.21308	0.16349
103	34.797	VB	0.0511	37.85561	10.73617	0.04937
104	35.033	BB	0.0610	102.67422	26.59462	0.13389
105	35.244	BB	0.0653	30.48277	7.06716	0.03975
106	35.854	BB	0.0549	103.21350	28.75827	0.13460
107	36.205	BB	0.0553	11.66827	3.07181	0.01522
108	37.083	BV	0.0473	42.60215	13.32263	0.05556
109	37.180	VB	0.0587	27.76249	7.08989	0.03620
110	37.621	BB	0.0478	7.44397	2.29821	0.00971
111	37.842	BV	0.0557	113.04345	27.09138	0.14742
112	37.920	VB	0.0604	100.49435	22.38227	0.13105
113	38.250	BB	0.0932	71.94430	10.33910	0.09382
114	43.668	BB	0.0529	36.21443	10.58860	0.04723
115	46.285	BV	0.0579	421.10083	109.40978	0.54914
116	46.420	VB	0.0617	263.15085	63.00661	0.34316

Peak #	RetTime [min]	Type	Width [min]	Area [pA*s]	Height [pA]	Area %
117	46.691	BB	0.0518	12.26274	3.42043	0.01599
118	50.555	BB	0.0739	70.24442	13.23324	0.09160
119	54.491	BB	0.1115	54.52180	6.39288	0.07110

Totals : 7.66837e4 1.32346e4

=====
*** End of Report ***