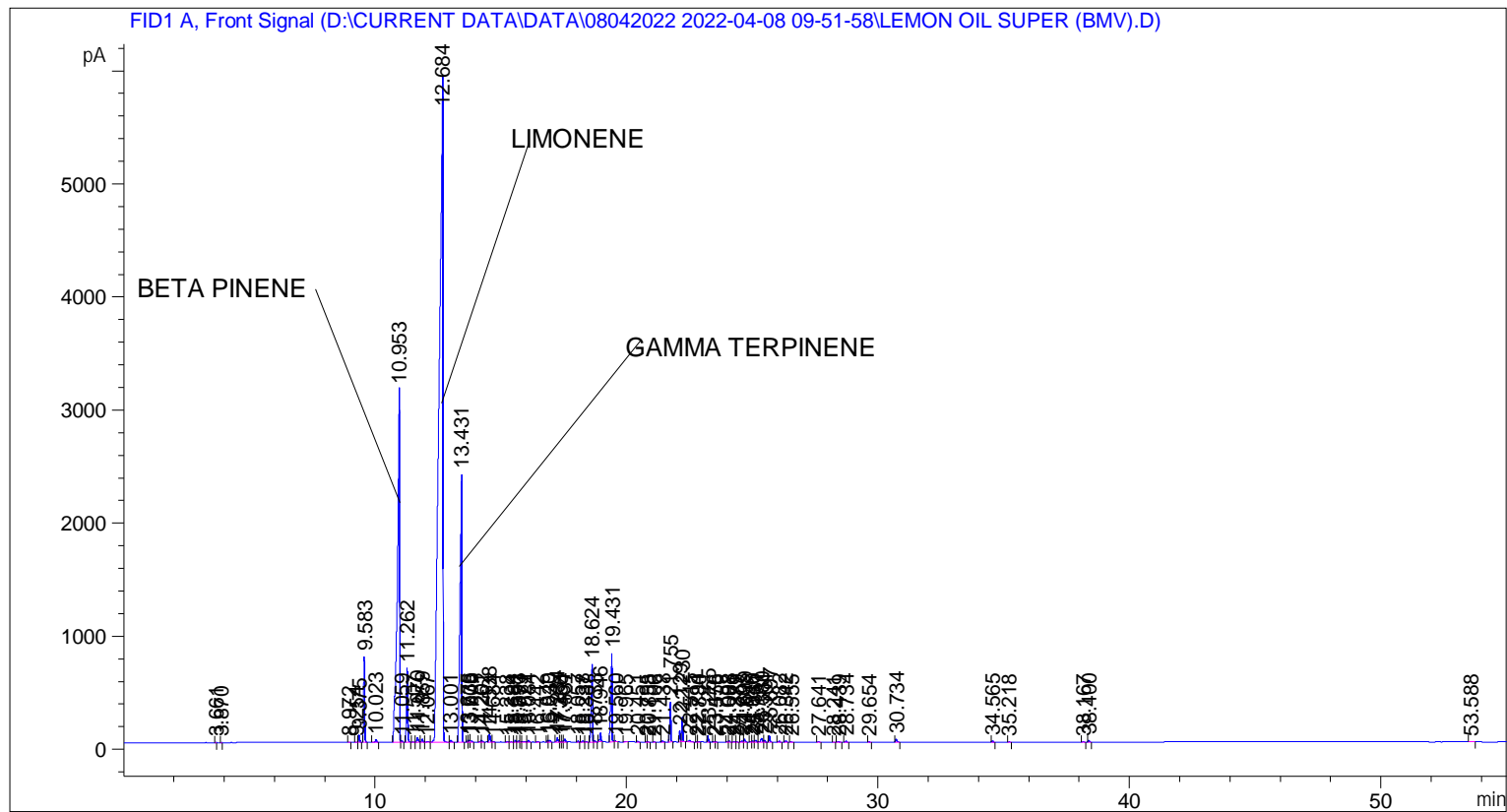


```
=====
Acq. Operator   : SYSTEM                               Seq. Line :    3
Acq. Instrument : BMV_NEW_GC_7820                     Location  : Vial 103
Injection Date  : 08-Apr-22 12:15:21 PM                Inj       :    1
                                                    Inj Volume: 0.5 µl

Acq. Method     : D:\CURRENT DATA\DATA\08042022 2022-04-08 09-51-58\UNIVERSAL.BMV.M
Last changed    : 08-Apr-22 9:52:10 AM by SYSTEM
Analysis Method : C:\CHEM32\2\METHODS\COOLING.M
Last changed    : 05-Nov-20 11:10:00 AM by SYSTEM
=====
```



=====
 Area Percent Report
 =====

```
Sorted By      : Signal
Multiplier     : 1.0000
Dilution       : 1.0000
Do not use Multiplier & Dilution Factor with ISTDs
```

Signal 1: FID1 A, Front Signal

Peak #	RetTime [min]	Type	Width [min]	Area [pA*s]	Height [pA]	Area %
1	3.661	BB	0.0232	2.21932	1.50572	0.00204
2	3.870	BB	0.0247	2.06754	1.29105	0.00190
3	8.972	BB	0.0414	4.66123	1.79156	0.00429
4	9.254	BV	0.0440	7.19346	2.53970	0.00662
5	9.375	VB	0.0454	208.75987	70.77906	0.19213
6	9.583	BB	0.0486	2309.04199	756.95453	2.12516
7	10.023	BB	0.0571	90.23499	23.86066	0.08305
8	10.953	BV	0.0769	1.89784e4	3120.93042	17.46700
9	11.059	VB	0.0478	41.05484	12.66198	0.03779

Sample Name: LEMON OIL SUPER (BMV)

Peak #	RetTime [min]	Type	Width [min]	Area [pA*s]	Height [pA]	Area %
10	11.262	BB	0.0517	2120.54443	656.82043	1.95167
11	11.507	BB	0.0512	10.35390	3.00319	0.00953
12	11.670	BB	0.0621	164.33768	40.73993	0.15125
13	11.859	BB	0.0617	113.63866	29.02555	0.10459
14	12.067	BV	0.0933	46.19652	8.12732	0.04252
15	12.684	VV	0.1301	6.20446e4	5881.55713	57.10352
16	13.001	VB	0.0469	56.90010	18.00980	0.05237
17	13.431	BB	0.0647	1.17343e4	2374.35254	10.79978
18	13.675	BV	0.0390	38.30461	15.42636	0.03525
19	13.736	VV	0.0467	53.39778	16.08735	0.04915
20	13.808	VB	0.0540	37.21479	9.86759	0.03425
21	14.201	BV	0.0438	44.75994	15.43381	0.04120
22	14.262	VB	0.0458	22.75676	7.62440	0.02094
23	14.538	BV	0.0493	230.42683	72.03671	0.21208
24	14.684	VB	0.0576	18.05372	4.52307	0.01662
25	15.238	BB	0.0537	16.78026	4.80869	0.01544
26	15.394	BB	0.0593	11.34695	2.98666	0.01044
27	15.561	BV	0.0452	41.76458	14.22821	0.03844
28	15.693	VV	0.0534	42.66977	12.03837	0.03927
29	15.779	VV	0.0573	12.71813	3.27257	0.01171
30	15.921	VV	0.0841	31.60384	4.84518	0.02909
31	16.084	VB	0.0504	57.60204	17.52290	0.05301
32	16.442	BB	0.0538	19.82678	5.80559	0.01825
33	16.849	BV	0.0466	50.79281	16.65370	0.04675
34	16.930	VB	0.0499	46.71605	13.66583	0.04300
35	17.234	BV	0.0540	124.91699	33.92258	0.11497
36	17.368	VV	0.0475	10.97859	3.50670	0.01010
37	17.464	VV	0.0534	32.81590	9.02702	0.03020
38	17.537	VB	0.0499	85.79964	25.71811	0.07897
39	18.057	BB	0.0486	30.62765	9.50074	0.02819
40	18.238	BV	0.0630	43.60221	11.05082	0.04013
41	18.387	VB	0.0520	19.24734	5.76442	0.01771
42	18.624	BV	0.0530	2593.29736	688.32202	2.38677
43	18.733	VB	0.0504	37.83598	10.93374	0.03482
44	18.946	BB	0.0479	243.37589	76.90273	0.22399
45	19.431	BV	0.0530	3140.04492	780.26208	2.88998
46	19.560	VB	0.0556	24.10848	6.17422	0.02219
47	19.965	BB	0.0885	25.10511	4.04265	0.02311
48	20.451	BB	0.0542	21.44127	6.22980	0.01973
49	20.795	BV	0.0430	9.09881	3.21974	0.00837
50	20.858	VB	0.0476	9.42591	3.00623	0.00868
51	21.106	BB	0.0491	6.41736	1.96758	0.00591
52	21.438	BB	0.0520	38.34846	10.90433	0.03529
53	21.755	BB	0.0445	1048.06165	354.91302	0.96460
54	22.129	BV	0.0467	293.13641	98.45289	0.26979
55	22.230	VB	0.0464	671.12457	221.23401	0.61768
56	22.515	BB	0.0777	70.60736	11.99124	0.06498
57	22.794	BV	0.0477	6.65077	2.17154	0.00612
58	22.880	VB	0.0568	11.68978	3.04724	0.01076
59	23.255	BB	0.0463	158.86871	52.56137	0.14622
60	23.476	BV	0.0429	8.70241	3.18646	0.00801
61	23.558	VB	0.0456	8.70944	2.77334	0.00802
62	24.008	BV	0.0486	19.96498	6.36536	0.01838
63	24.088	VB	0.0492	36.23903	11.06079	0.03335

Peak #	RetTime [min]	Type	Width [min]	Area [pA*s]	Height [pA]	Area %
64	24.271	BV	0.0608	13.33419	3.12669	0.01227
65	24.389	VB	0.0600	11.35744	2.88151	0.01045
66	24.605	BV	0.0546	30.29322	8.10046	0.02788
67	24.699	VB	0.0521	100.14604	27.75391	0.09217
68	24.946	BV	0.0533	16.00040	4.41109	0.01473
69	25.030	VV	0.0505	31.91407	9.43311	0.02937
70	25.161	VV	0.0706	65.02399	12.73440	0.05985
71	25.380	VV	0.0663	158.66121	34.06055	0.14603
72	25.504	VB	0.0461	38.20700	13.06873	0.03516
73	25.697	BB	0.0495	184.02150	58.79359	0.16937
74	26.082	BB	0.0606	31.00843	7.59325	0.02854
75	26.342	BB	0.0531	40.55881	11.80207	0.03733
76	26.555	BB	0.0551	13.73677	3.80787	0.01264
77	27.641	BB	0.0524	17.96533	5.18393	0.01653
78	28.241	BB	0.0472	6.23207	1.95536	0.00574
79	28.439	BB	0.0797	38.62006	6.85573	0.03554
80	28.734	BB	0.0605	38.74807	9.50747	0.03566
81	29.654	BB	0.0561	20.54889	5.70026	0.01891
82	30.734	BB	0.0646	114.26288	25.34566	0.10516
83	34.565	BB	0.0493	38.07289	11.60787	0.03504
84	35.218	BB	0.0503	13.85059	4.21363	0.01275
85	38.167	BB	0.0568	8.13930	2.16842	0.00749
86	38.400	BB	0.0533	46.50520	13.45345	0.04280
87	53.588	BB	0.0895	34.19539	4.83757	0.03147

Totals : 1.08653e5 1.59874e4

=====
*** End of Report ***