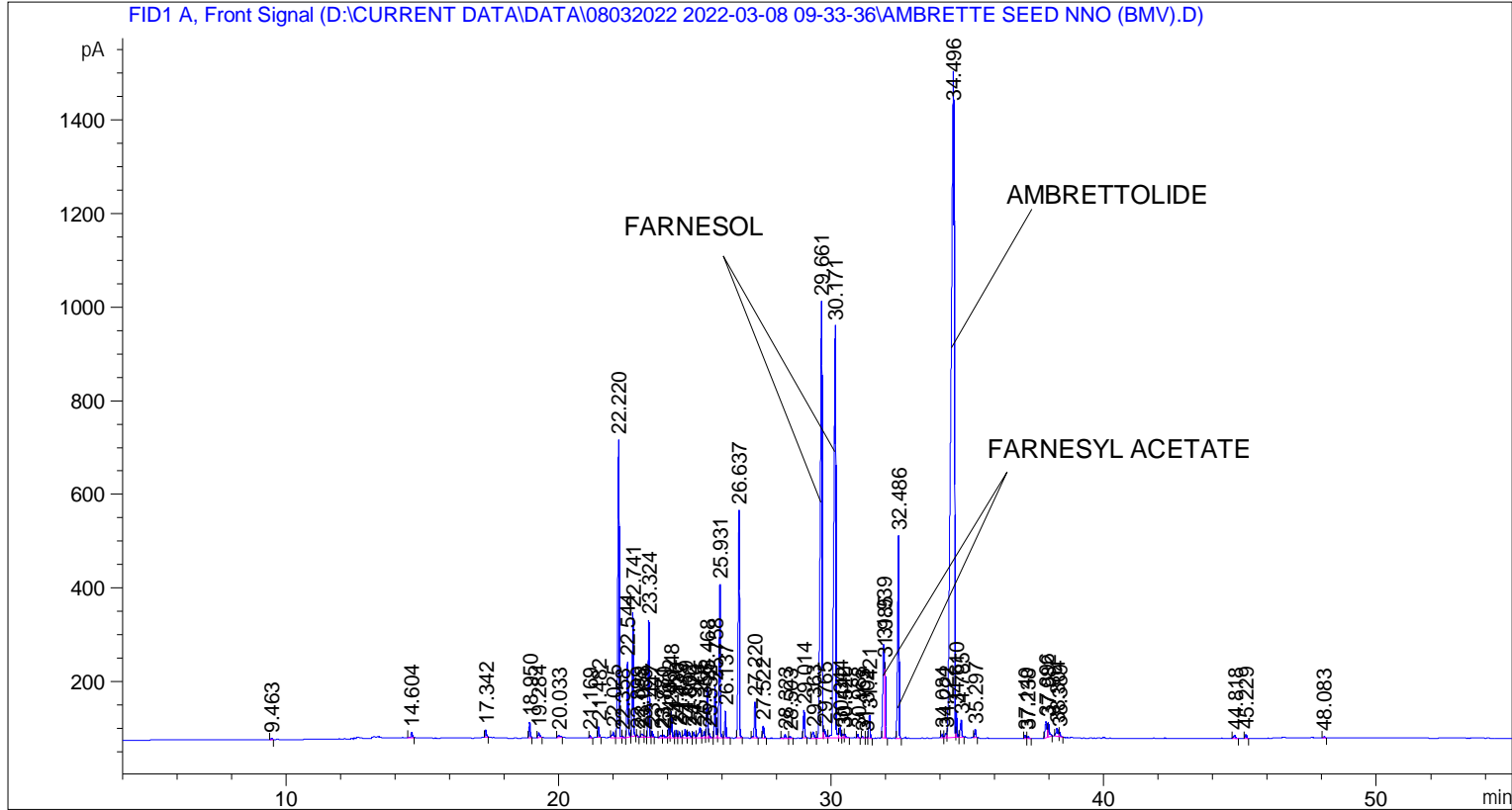


```

=====
Acq. Operator   : SYSTEM                               Seq. Line :    3
Acq. Instrument : BMV_NEW_GC_7820                     Location  : Vial 103
Injection Date  : 08-Mar-22 11:56:49 AM                Inj       :    1
                                                    Inj Volume: 0.5 µl

Acq. Method     : D:\CURRENT DATA\DATA\08032022 2022-03-08 09-33-36\UNIVERSAL BMV.M
Last changed    : 08-Mar-22 9:33:47 AM by SYSTEM
Analysis Method : C:\CHEM32\2\METHODS\COOLING.M
Last changed    : 08-Mar-22 8:59:51 AM by SYSTEM
                (modified after loading)
  
```



=====
 Area Percent Report
 =====

```

Sorted By      :      Signal
Multiplier     :      1.0000
Dilution       :      1.0000
Do not use Multiplier & Dilution Factor with ISTDs
  
```

Signal 1: FID1 A, Front Signal

Peak #	RetTime [min]	Type	Width [min]	Area [pA*s]	Height [pA]	Area %
1	3.273	BB	0.0535	14.91666	4.29583	0.04303
2	9.463	BB	0.0473	8.83223	2.83627	0.02548
3	14.604	BB	0.0511	38.30134	11.14898	0.11050
4	17.342	BB	0.0507	54.72792	16.49888	0.15789
5	18.950	BB	0.0474	100.28724	33.04190	0.28933
6	19.284	BB	0.0616	44.06313	10.36640	0.12712
7	20.033	BB	0.0844	28.29769	4.49644	0.08164
8	21.169	BB	0.0433	14.39237	5.19832	0.04152

Peak #	RetTime [min]	Type	Width [min]	Area [pA*s]	Height [pA]	Area %
9	21.482	BB	0.0449	69.15684	23.78266	0.19952
10	22.025	BV	0.0691	55.81804	11.01141	0.16103
11	22.220	VB	0.0546	2160.29175	636.54370	6.23240
12	22.358	BB	0.0468	9.97563	3.25251	0.02878
13	22.544	BV	0.0498	522.08478	161.34462	1.50620
14	22.741	VB	0.0455	781.25165	264.50153	2.25389
15	22.899	BB	0.0330	6.91260	3.10503	0.01994
16	23.058	BV	0.0669	38.57677	7.91461	0.11129
17	23.169	VV	0.0539	13.88720	3.60714	0.04006
18	23.324	VV	0.0464	759.41229	250.15213	2.19089
19	23.447	VB	0.0444	34.65118	12.12175	0.09997
20	23.781	BV	0.0681	29.72745	6.07655	0.08576
21	23.870	VB	0.0688	30.27522	6.10836	0.08734
22	24.062	BV	0.0481	66.91018	21.02365	0.19303
23	24.148	VB	0.0516	187.33818	56.55336	0.54047
24	24.330	BV	0.0515	54.64696	16.54055	0.15766
25	24.439	VV	0.0593	51.36770	12.95166	0.14819
26	24.659	VV	0.0642	83.53508	19.04921	0.24100
27	24.802	VV	0.0635	61.87532	13.50522	0.17851
28	24.970	VV	0.0673	54.48355	12.14357	0.15718
29	25.205	VV	0.0834	125.89955	21.17637	0.36322
30	25.358	VV	0.0582	56.41499	13.93944	0.16276
31	25.468	VV	0.0488	341.96976	108.37122	0.98658
32	25.552	VB	0.0502	31.67674	9.42397	0.09139
33	25.758	BV	0.0487	347.61664	110.63551	1.00287
34	25.931	VB	0.0490	1038.04663	327.29639	2.99474
35	26.137	BB	0.0470	174.82735	56.66408	0.50437
36	26.637	BB	0.0470	1585.08325	486.46313	4.57293
37	27.220	BB	0.0502	253.05475	77.22497	0.73006
38	27.522	BB	0.0536	93.80388	26.31080	0.27062
39	28.323	BB	0.0615	33.11573	7.80650	0.09554
40	28.503	BB	0.0630	18.18413	4.24148	0.05246
41	29.014	BB	0.0493	191.61790	59.90284	0.55281
42	29.363	BV	0.0696	64.87756	12.91942	0.18717
43	29.661	VV	0.0643	4181.28906	932.98456	12.06293
44	29.765	VV	0.0702	92.34727	17.90790	0.26642
45	30.171	VV	0.0655	4257.18799	878.97998	12.28190
46	30.344	VV	0.0585	86.29821	21.21075	0.24897
47	30.442	VV	0.0504	27.44533	7.93237	0.07918
48	30.520	VB	0.0575	30.96761	7.45693	0.08934
49	30.988	BB	0.0466	23.10935	8.02793	0.06667
50	31.163	BB	0.0511	10.84484	3.32351	0.03129
51	31.302	BV	0.0464	7.60792	2.43777	0.02195
52	31.421	VB	0.0494	157.64713	49.18758	0.45481
53	31.939	BV	0.0558	733.43079	200.00769	2.11593
54	31.985	VB	0.0366	377.54077	159.51344	1.08920
55	32.486	BB	0.0524	1534.11401	432.12015	4.42589
56	34.084	BV	0.0492	23.91677	7.49870	0.06900
57	34.222	VV	0.0568	36.06061	9.19532	0.10403
58	34.496	VV	0.1126	1.25107e4	1422.68494	36.09316
59	34.610	VV	0.0407	153.30296	58.33355	0.44228
60	34.785	VB	0.0567	141.78568	36.97365	0.40905
61	35.297	BB	0.0451	49.75875	17.03653	0.14355
62	37.140	BV	0.0514	23.00213	7.18325	0.06636

Peak #	RetTime [min]	Type	Width [min]	Area [pA*s]	Height [pA]	Area %
63	37.238	VB	0.0536	18.86697	5.17004	0.05443
64	37.896	BV	0.0632	147.84341	34.37718	0.42653
65	37.982	VB	0.0588	125.39608	30.63582	0.36177
66	38.304	BV	0.0618	79.56837	17.56968	0.22955
67	38.389	VB	0.0461	30.38929	9.29911	0.08767
68	44.818	BB	0.0658	30.35814	6.35060	0.08758
69	45.229	BB	0.0534	28.45532	8.42571	0.08209
70	48.083	BB	0.0578	10.85621	2.82759	0.03132

Totals : 3.46623e4 7346.20056

=====
*** End of Report ***