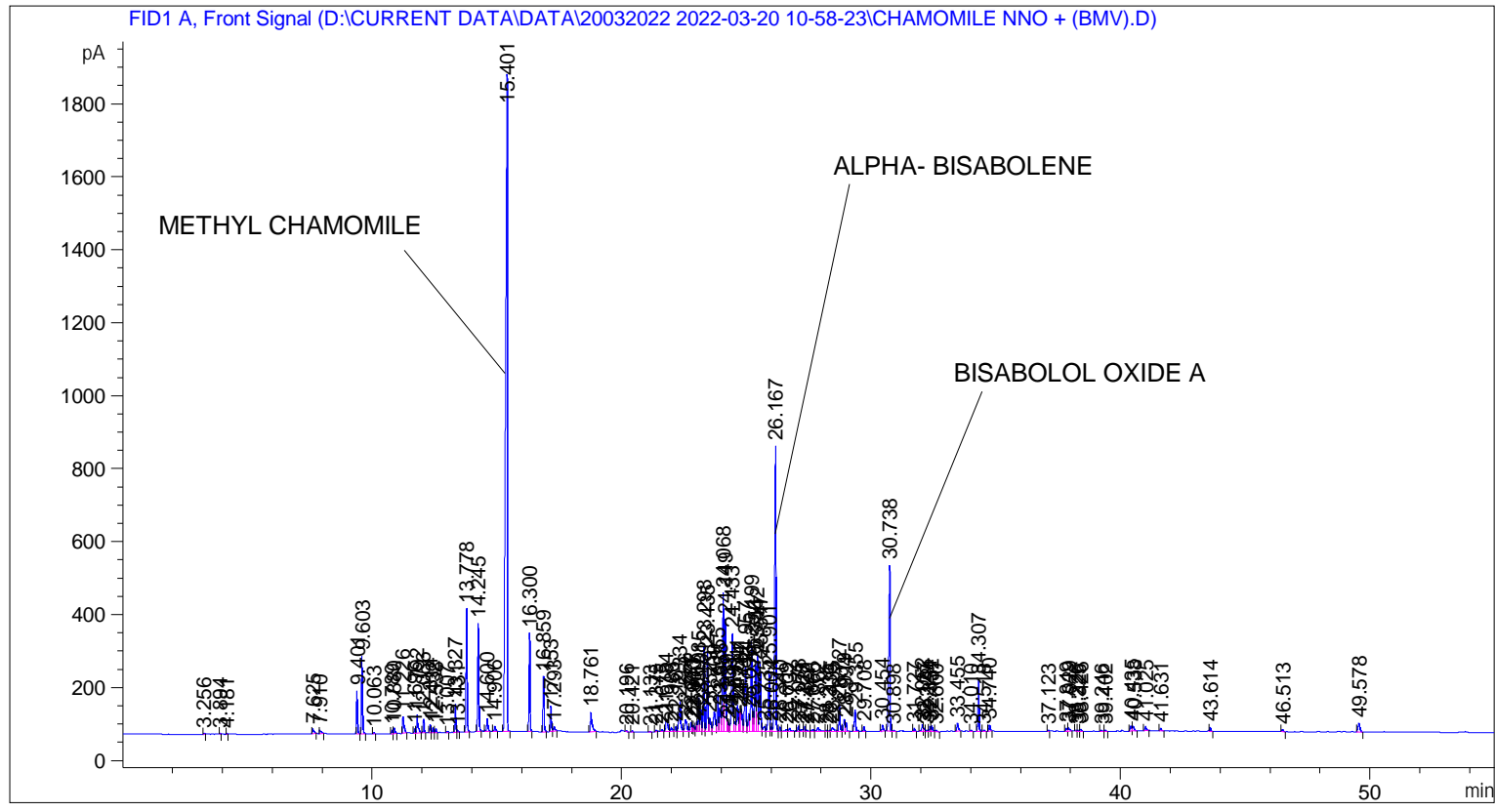


```

=====
Acq. Operator   : SYSTEM                               Seq. Line :    3
Acq. Instrument : BMV_NEW_GC_7820                     Location  : Vial 103
Injection Date  : 20-Mar-22 1:22:51 PM                 Inj       :    1
                                                    Inj Volume: 0.5 µl

Acq. Method     : D:\CURRENT DATA\DATA\20032022 2022-03-20 10-58-23\UNIVERSAL BMV.M
Last changed    : 20-Mar-22 10:58:34 AM by SYSTEM
Analysis Method : C:\CHEM32\2\METHODS\COOLING.M
Last changed    : 28-Mar-22 11:03:36 AM by SYSTEM
                (modified after loading)
  
```



=====
 Area Percent Report
 =====

```

Sorted By      : Signal
Multiplier     : 1.0000
Dilution       : 1.0000
Do not use Multiplier & Dilution Factor with ISTDs
  
```

Signal 1: FID1 A, Front Signal

Peak #	RetTime [min]	Type	Width [min]	Area [pA*s]	Height [pA]	Area %
1	3.256	BB	0.0402	7.92597	2.96493	0.02246
2	3.894	BB	0.0296	4.42587	2.18982	0.01254
3	4.181	BB	0.0306	4.12908	1.95951	0.01170
4	7.625	BB	0.0535	53.59400	13.74555	0.15185
5	7.910	BB	0.0633	42.45602	8.95372	0.12029
6	9.401	BB	0.0440	333.79431	117.85079	0.94573
7	9.603	BB	0.0449	620.24139	213.59380	1.75732
8	10.063	BB	0.0486	8.18954	2.60966	0.02320

Sample Name: CHAMOMILE NNO + (BMV)

Peak #	RetTime [min]	Type	Width [min]	Area [pA*s]	Height [pA]	Area %
9	10.789	BV	0.0434	27.80581	10.01563	0.07878
10	10.880	VB	0.0521	55.14452	15.64522	0.15624
11	11.226	BB	0.0555	186.82298	45.88875	0.52932
12	11.696	BV	0.0441	32.31435	11.40604	0.09156
13	11.792	VB	0.0548	187.98306	48.98592	0.53261
14	12.056	BB	0.0436	107.97638	38.70036	0.30593
15	12.314	BV	0.0436	64.54429	22.40722	0.18287
16	12.432	VV	0.0514	44.28888	13.46744	0.12548
17	12.538	VB	0.0476	34.68420	11.05198	0.09827
18	13.007	BB	0.0447	10.94798	3.79153	0.03102
19	13.327	BV	0.0457	219.35995	76.02651	0.62151
20	13.431	VB	0.0442	11.94116	4.19638	0.03383
21	13.778	BB	0.0481	1021.17487	339.45224	2.89327
22	14.245	BB	0.0491	916.82709	296.49115	2.59762
23	14.600	BB	0.0539	122.59584	34.10087	0.34735
24	14.906	BB	0.0589	55.54648	13.53812	0.15738
25	15.401	BB	0.0654	8868.53027	1801.43762	25.12700
26	16.300	BB	0.0450	766.67322	270.89355	2.17220
27	16.859	BB	0.0461	454.28076	150.88815	1.28710
28	17.153	BV	0.0487	220.42834	70.07128	0.62453
29	17.293	VB	0.0582	52.45396	12.69284	0.14862
30	18.761	BB	0.0683	255.94165	52.07086	0.72515
31	20.196	BB	0.0439	6.51948	2.38546	0.01847
32	20.421	BB	0.0447	9.28998	3.12084	0.02632
33	21.133	BB	0.0453	5.48139	1.97960	0.01553
34	21.375	BB	0.0544	15.60029	4.29326	0.04420
35	21.615	BB	0.0515	18.04671	5.32655	0.05113
36	21.784	BV	0.0758	184.43370	32.69810	0.52255
37	21.986	VB	0.0731	48.42483	9.25198	0.13720
38	22.161	BV	0.0490	44.65727	13.70076	0.12653
39	22.334	VB	0.0684	400.00354	81.32814	1.13332
40	22.556	BB	0.0794	189.25443	32.28957	0.53621
41	22.777	BV	0.0510	86.89773	24.70431	0.24621
42	22.843	VV	0.0480	57.53755	17.68087	0.16302
43	22.900	VV	0.0435	33.19482	11.22043	0.09405
44	23.007	VV	0.0525	91.67349	26.38906	0.25974
45	23.085	VV	0.0469	284.59048	92.50732	0.80632
46	23.181	VV	0.0603	230.55426	59.33875	0.65322
47	23.298	VV	0.0483	721.03583	231.83908	2.04289
48	23.435	VV	0.0484	704.94806	219.63301	1.99731
49	23.529	VV	0.0665	171.58501	36.08902	0.48615
50	23.709	VV	0.0871	320.22485	54.07729	0.90729
51	23.855	VV	0.0564	366.85153	100.86392	1.03939
52	23.955	VV	0.0621	227.59914	57.56910	0.64485
53	24.068	VV	0.0536	1325.06433	381.08862	3.75427
54	24.149	VV	0.0470	973.22748	307.25427	2.75742
55	24.239	VV	0.0434	83.62924	28.38075	0.23694
56	24.303	VV	0.0412	55.65044	19.55714	0.15767
57	24.433	VV	0.0621	1107.41760	268.73117	3.13762
58	24.531	VV	0.0563	107.97568	26.63616	0.30592
59	24.641	VV	0.0647	291.16077	71.21510	0.82494
60	24.744	VV	0.0452	162.54034	53.84544	0.46052
61	24.787	VV	0.0573	262.48767	60.90376	0.74370
62	24.957	VV	0.0659	770.61572	173.16716	2.18337

Sample Name: CHAMOMILE NNO + (BMV)

Peak #	RetTime [min]	Type	Width [min]	Area [pA*s]	Height [pA]	Area %
63	25.096	VV	0.0571	188.24210	49.83889	0.53334
64	25.199	VV	0.0508	843.80389	247.18382	2.39073
65	25.276	VV	0.0423	155.39413	54.47725	0.44027
66	25.356	VV	0.0475	580.21570	180.27478	1.64391
67	25.442	VV	0.0497	680.92297	210.90540	1.92924
68	25.547	VV	0.0492	626.07330	191.10124	1.77384
69	25.735	VV	0.0821	84.65479	13.88683	0.23985
70	25.901	VV	0.0536	581.87994	167.15575	1.64863
71	26.004	VV	0.0547	44.27777	12.68037	0.12545
72	26.167	VV	0.0521	2894.05615	783.20020	8.19966
73	26.340	VV	0.0486	39.31729	12.54282	0.11140
74	26.609	VV	0.0852	32.47798	5.39861	0.09202
75	26.732	VB	0.0590	37.81259	8.81959	0.10713
76	27.078	BV	0.0495	50.32757	15.26689	0.14259
77	27.228	VV	0.0701	31.47880	5.55445	0.08919
78	27.331	VV	0.0528	49.31129	14.08620	0.13971
79	27.427	VB	0.0601	17.38048	4.13310	0.04924
80	27.666	BV	0.0826	31.64553	4.88194	0.08966
81	27.862	VB	0.0983	82.41738	11.01123	0.23351
82	28.215	BV	0.0597	13.65052	3.26949	0.03868
83	28.336	VV	0.0562	13.06053	3.44399	0.03700
84	28.435	VB	0.0972	81.68685	11.18484	0.23144
85	28.727	BV	0.0533	253.64546	71.60560	0.71865
86	28.919	VV	0.0521	116.86377	33.13556	0.33111
87	28.994	VB	0.0501	78.17031	23.34784	0.22148
88	29.355	BB	0.0597	248.43951	60.76675	0.70390
89	29.708	BB	0.0476	42.58900	13.94060	0.12067
90	30.454	BB	0.0566	65.20467	17.05633	0.18474
91	30.738	BB	0.0543	1725.62195	454.96289	4.88916
92	30.898	BB	0.0714	15.66633	3.13037	0.04439
93	31.727	BB	0.0535	26.29347	7.75774	0.07450
94	32.052	BV	0.0547	74.65469	19.04303	0.21152
95	32.127	VV	0.0454	29.08728	9.57370	0.08241
96	32.229	VV	0.0667	21.93349	4.59103	0.06214
97	32.354	VV	0.0470	46.76786	14.37488	0.13251
98	32.432	VB	0.0578	60.37701	15.37797	0.17106
99	32.600	BB	0.0651	16.64640	4.03737	0.04716
100	33.455	BB	0.0666	96.23172	21.35039	0.27265
101	34.010	BB	0.0512	11.24672	3.53078	0.03187
102	34.307	BB	0.0499	447.20587	141.27338	1.26706
103	34.518	BB	0.0518	11.96991	3.42207	0.03391
104	34.740	BB	0.0581	67.85468	17.15626	0.19225
105	37.123	BV	0.0524	9.55885	2.83051	0.02708
106	37.849	BV	0.0545	30.63325	8.61301	0.08679
107	37.929	VB	0.0681	50.28890	9.59877	0.14248
108	38.226	BV	0.0473	7.71734	2.41176	0.02187
109	38.325	VV	0.0563	10.58275	2.91566	0.02998
110	38.426	VB	0.0509	20.02511	5.70877	0.05674
111	39.246	BB	0.0573	13.27779	3.42184	0.03762
112	39.402	BB	0.0562	10.75542	2.84174	0.03047
113	40.435	BV	0.0588	56.16101	14.31541	0.15912
114	40.538	VB	0.0713	58.70132	11.75079	0.16632
115	41.025	BB	0.0620	43.62149	11.06721	0.12359
116	41.631	BB	0.0626	28.87625	7.23303	0.08181

Peak #	RetTime [min]	Type	Width [min]	Area [pA*s]	Height [pA]	Area %
117	43.614	BB	0.0486	36.48345	11.31687	0.10337
118	46.513	BB	0.0530	23.15935	6.43447	0.06562
119	49.578	BB	0.0787	127.23153	23.66421	0.36048

Totals : 3.52948e4 9290.00970

=====
*** End of Report ***