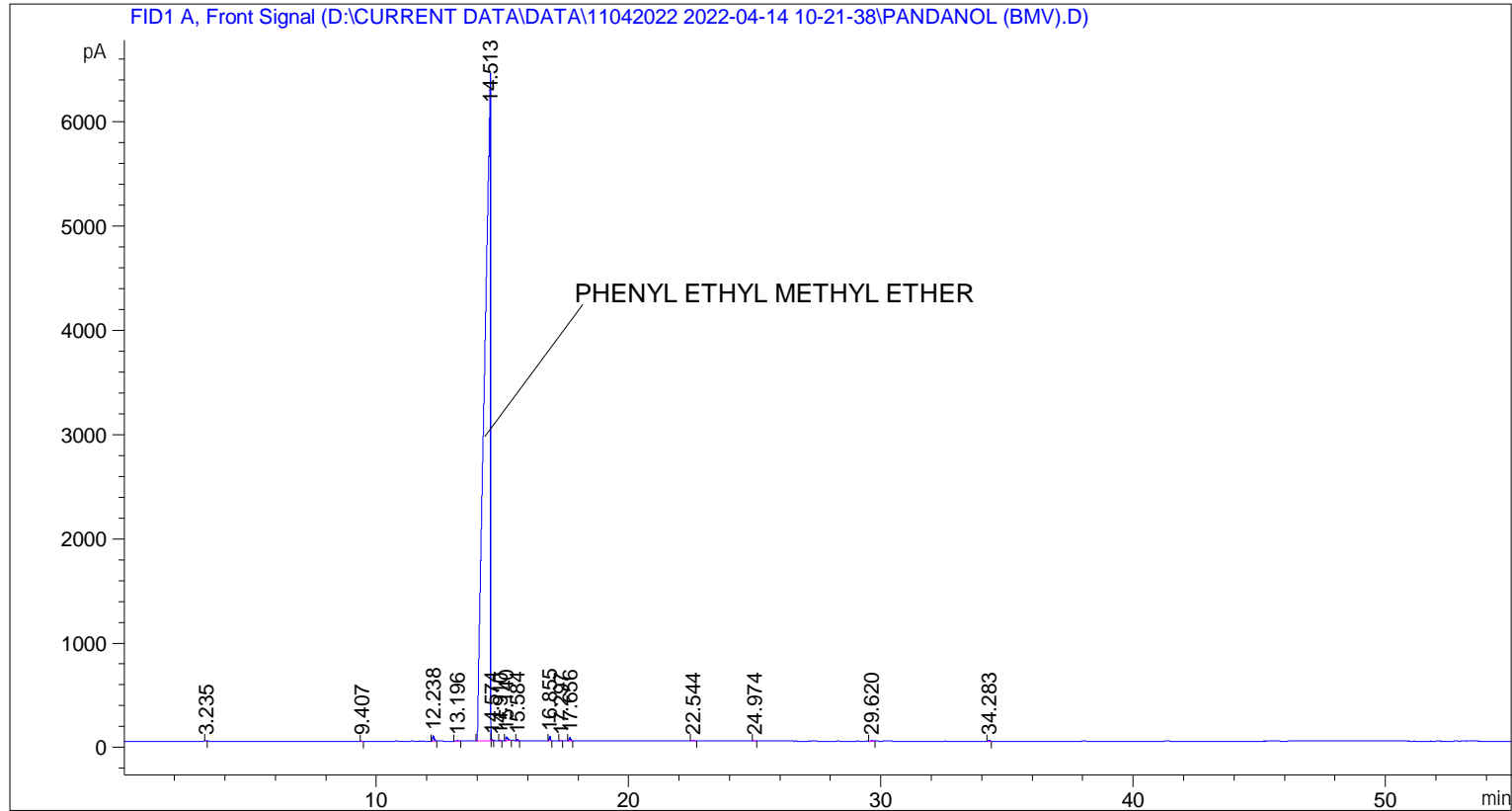


```

=====
Acq. Operator   : SYSTEM                               Seq. Line :    1
Acq. Instrument : BMV_NEW_GC_7820                     Location  : Vial 101
Injection Date  : 14-Apr-22 10:32:40 AM                Inj       :    1
                                                    Inj Volume: 0.5 µl

Acq. Method     : D:\CURRENT DATA\DATA\11042022 2022-04-14 10-21-38\UNIVERSAL BMV.M
Last changed    : 14-Apr-22 10:21:49 AM by SYSTEM
Analysis Method : C:\CHEM32\2\METHODS\COOLING.M
Last changed    : 15-Apr-22 10:38:47 AM by SYSTEM
                (modified after loading)
  
```



=====
 Area Percent Report
 =====

```

Sorted By      :      Signal
Multiplier     :      1.0000
Dilution       :      1.0000
Do not use Multiplier & Dilution Factor with ISTDs
  
```

Signal 1: FID1 A, Front Signal

Peak #	RetTime [min]	Type	Width [min]	Area [pA*s]	Height [pA]	Area %
1	3.235	BB	0.0367	10.30737	4.05165	0.00974
2	9.407	BB	0.0452	6.68634	2.28382	0.00632
3	12.238	BB	0.0601	205.07788	49.75625	0.19378
4	13.196	BB	0.0957	42.43293	6.29153	0.04009
5	14.513	BV	0.1963	1.04939e5	6398.31494	99.15541
6	14.574	VB	0.0400	24.53471	9.23571	0.02318
7	14.910	BB	0.0408	11.06692	4.18544	0.01046
8	15.140	BB	0.0776	200.92551	36.85821	0.18985

Sample Name: PANDANOL (BMV)

Peak #	RetTime [min]	Type	Width [min]	Area [pA*s]	Height [pA]	Area %
9	15.584	BB	0.0427	23.03088	8.48526	0.02176
10	16.855	BB	0.0453	120.32192	40.95360	0.11369
11	17.297	BB	0.0522	9.59368	2.78395	0.00906
12	17.656	BB	0.0564	111.68655	28.71849	0.10553
13	22.544	BB	0.0782	37.58715	6.33929	0.03552
14	24.974	BB	0.0664	17.02790	3.86553	0.01609
15	29.620	BB	0.0842	35.32089	6.31956	0.03337
16	34.283	BB	0.0581	38.25301	10.11749	0.03614

Totals : 1.05833e5 6618.56072

=====
*** End of Report ***