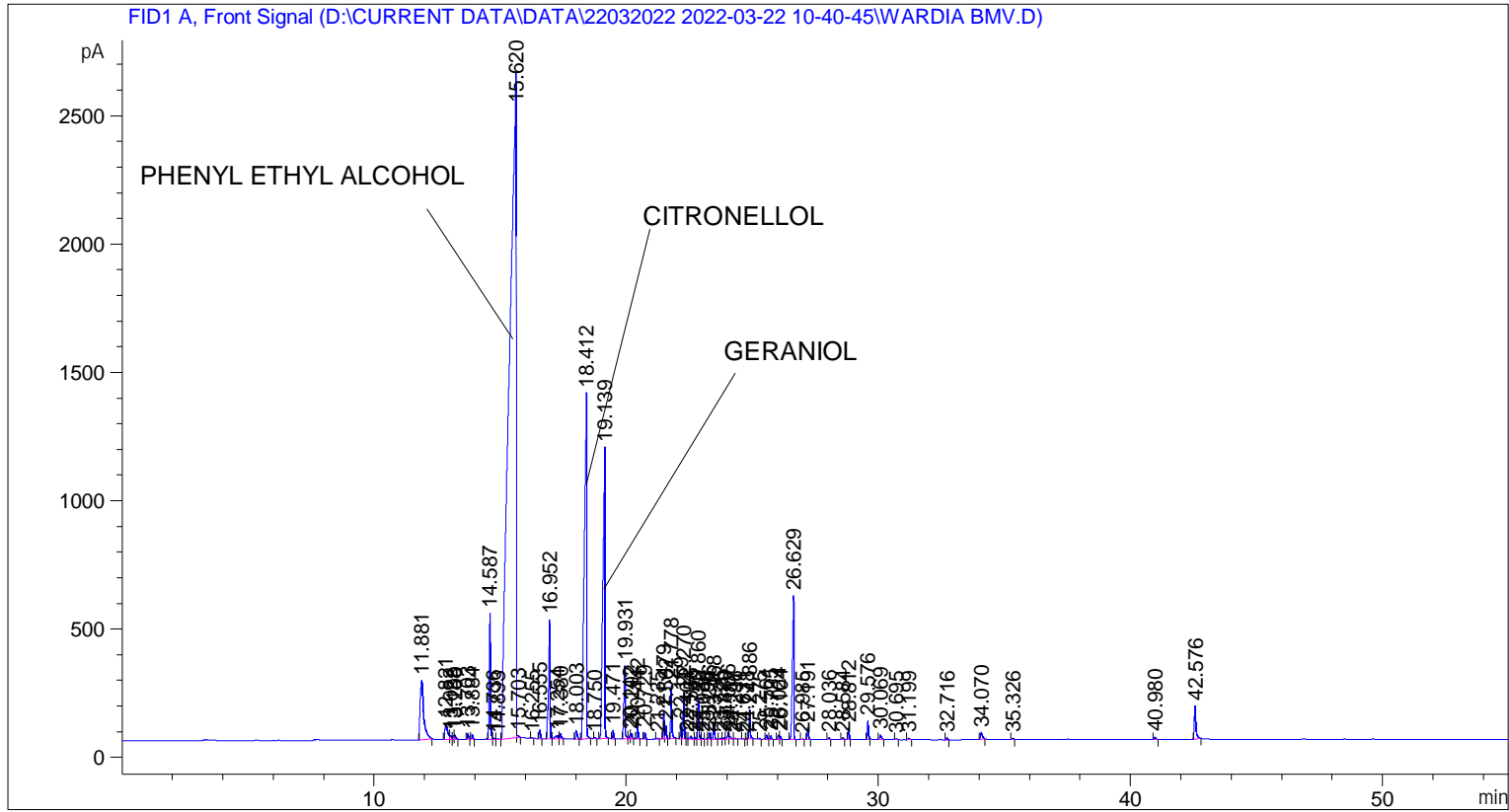


=====
Acq. Operator : SYSTEM Seq. Line : 1
Acq. Instrument : BMV_NEW_GC_7820 Location : Vial 101
Injection Date : 22-Mar-22 10:51:56 AM Inj : 1
Inj Volume : 0.5 µl

Acq. Method : D:\CURRENT DATA\DATA\22032022 2022-03-22 10-40-45\UNIVERSAL BMV.M
Last changed : 22-Mar-22 10:40:56 AM by SYSTEM
Analysis Method : C:\CHEM32\2\METHODS\COOLING.M
Last changed : 05-Nov-20 11:10:00 AM by SYSTEM



=====
Area Percent Report
=====

Sorted By : Signal
Multiplier : 1.0000
Dilution : 1.0000
Do not use Multiplier & Dilution Factor with ISTDs

Signal 1: FID1 A, Front Signal

Peak #	RetTime [min]	Type	Width [min]	Area [pA*s]	Height [pA]	Area %
1	11.881	BB	0.1380	2267.03198	232.05766	2.84420
2	12.821	BV	0.0992	450.15714	60.20094	0.56476
3	13.022	VV	0.0635	63.83965	14.47279	0.08009
4	13.138	VV	0.0449	44.14599	14.73934	0.05539
5	13.200	VB	0.0556	63.58510	16.27600	0.07977
6	13.703	BB	0.0508	73.97379	22.81214	0.09281
7	13.884	BB	0.0508	55.94183	17.72782	0.07018
8	14.587	BV	0.0557	1798.80127	490.92773	2.25676
9	14.736	VB	0.0527	19.30815	5.53225	0.02422

Sample Name: WARDIA BMV

Peak #	RetTime [min]	Type	Width [min]	Area [pA*s]	Height [pA]	Area %
10	14.893	BV	0.0608	13.19912	3.15619	0.01656
11	15.620	VV	0.2255	4.81872e4	2596.19580	60.45531
12	15.703	VB	0.0706	47.39382	9.28090	0.05946
13	16.255	BB	0.0484	9.05885	2.82610	0.01137
14	16.555	BB	0.0509	114.56247	34.35942	0.14373
15	16.952	BB	0.0558	1862.72021	464.78207	2.33695
16	17.254	BV	0.0920	91.75510	12.44913	0.11512
17	17.380	VB	0.0585	76.30959	19.58387	0.09574
18	18.003	BB	0.0728	149.77455	32.46116	0.18791
19	18.412	BB	0.0833	8802.00977	1346.19336	11.04293
20	18.750	BB	0.0522	14.42862	4.29417	0.01810
21	19.139	BB	0.0744	6639.32080	1132.83923	8.32964
22	19.471	BB	0.0456	99.73914	34.65234	0.12513
23	19.931	BB	0.0567	1046.35510	285.64963	1.31275
24	20.142	BV	0.0479	43.11121	13.26147	0.05409
25	20.202	VB	0.0480	68.33165	21.52213	0.08573
26	20.442	BB	0.0487	159.02052	51.97338	0.19951
27	20.729	BB	0.0500	83.10388	26.21066	0.10426
28	21.235	BB	0.0468	7.86907	2.56413	0.00987
29	21.479	BV	0.0452	308.00974	105.05416	0.38643
30	21.562	VB	0.0467	156.26692	52.50314	0.19605
31	21.778	BB	0.0472	662.05792	207.36258	0.83061
32	22.159	BV	0.0473	163.83481	55.67313	0.20555
33	22.270	VB	0.0450	527.03284	180.74500	0.66121
34	22.404	BV	0.0414	7.32387	2.90645	0.00919
35	22.556	VV	0.0718	63.65406	12.62603	0.07986
36	22.740	VV	0.0505	17.91088	5.29130	0.02247
37	22.860	VB	0.0479	482.63818	161.21925	0.60551
38	23.030	BV	0.0504	12.05600	3.66081	0.01513
39	23.196	VV	0.0464	12.15268	4.00152	0.01525
40	23.286	VV	0.0495	81.11430	25.90324	0.10177
41	23.468	VB	0.0489	211.48553	66.82805	0.26533
42	23.725	BV	0.0603	17.47115	4.30579	0.02192
43	23.880	VV	0.0674	26.19141	5.41821	0.03286
44	24.036	VV	0.0587	115.17920	27.58176	0.14450
45	24.117	VB	0.0636	36.85853	8.33904	0.04624
46	24.296	BB	0.0623	17.29082	3.93288	0.02169
47	24.631	BB	0.0395	4.73940	1.87705	0.00595
48	24.778	BV	0.0436	8.57737	3.06747	0.01076
49	24.886	VB	0.0506	376.51428	113.65453	0.47237
50	25.275	BB	0.0405	7.45724	3.05036	0.00936
51	25.561	BB	0.0475	49.45117	16.25684	0.06204
52	25.725	BB	0.0536	49.80414	14.67753	0.06248
53	26.024	BV	0.0548	64.38615	17.57061	0.08078
54	26.104	VB	0.0503	38.15033	11.33686	0.04786
55	26.629	BB	0.0552	2311.20068	558.95129	2.89961
56	26.985	BB	0.0423	5.81232	2.23774	0.00729
57	27.191	BB	0.0541	162.67169	46.12589	0.20409
58	28.036	BB	0.0467	23.49341	7.67364	0.02947
59	28.584	BB	0.0479	25.98597	8.68611	0.03260
60	28.812	BB	0.0466	133.50739	44.97484	0.16750
61	29.576	BB	0.0508	239.19894	73.88932	0.30010
62	30.069	BB	0.0677	83.64745	18.51814	0.10494
63	30.695	BB	0.0511	15.11220	4.62742	0.01896

Sample Name: WARDIA BMV

Peak #	RetTime [min]	Type	Width [min]	Area [pA*s]	Height [pA]	Area %
64	31.199	BB	0.0713	28.62083	5.54201	0.03591
65	32.716	BB	0.0524	24.42454	7.41476	0.03064
66	34.070	BB	0.0778	141.58060	25.49415	0.17763
67	35.326	BB	0.0499	14.95561	4.60850	0.01876
68	40.980	BB	0.0618	35.86008	8.58004	0.04499
69	42.576	BB	0.0616	591.42981	128.83112	0.74200

Totals : 7.97072e4 9030.00036

=====
*** End of Report ***