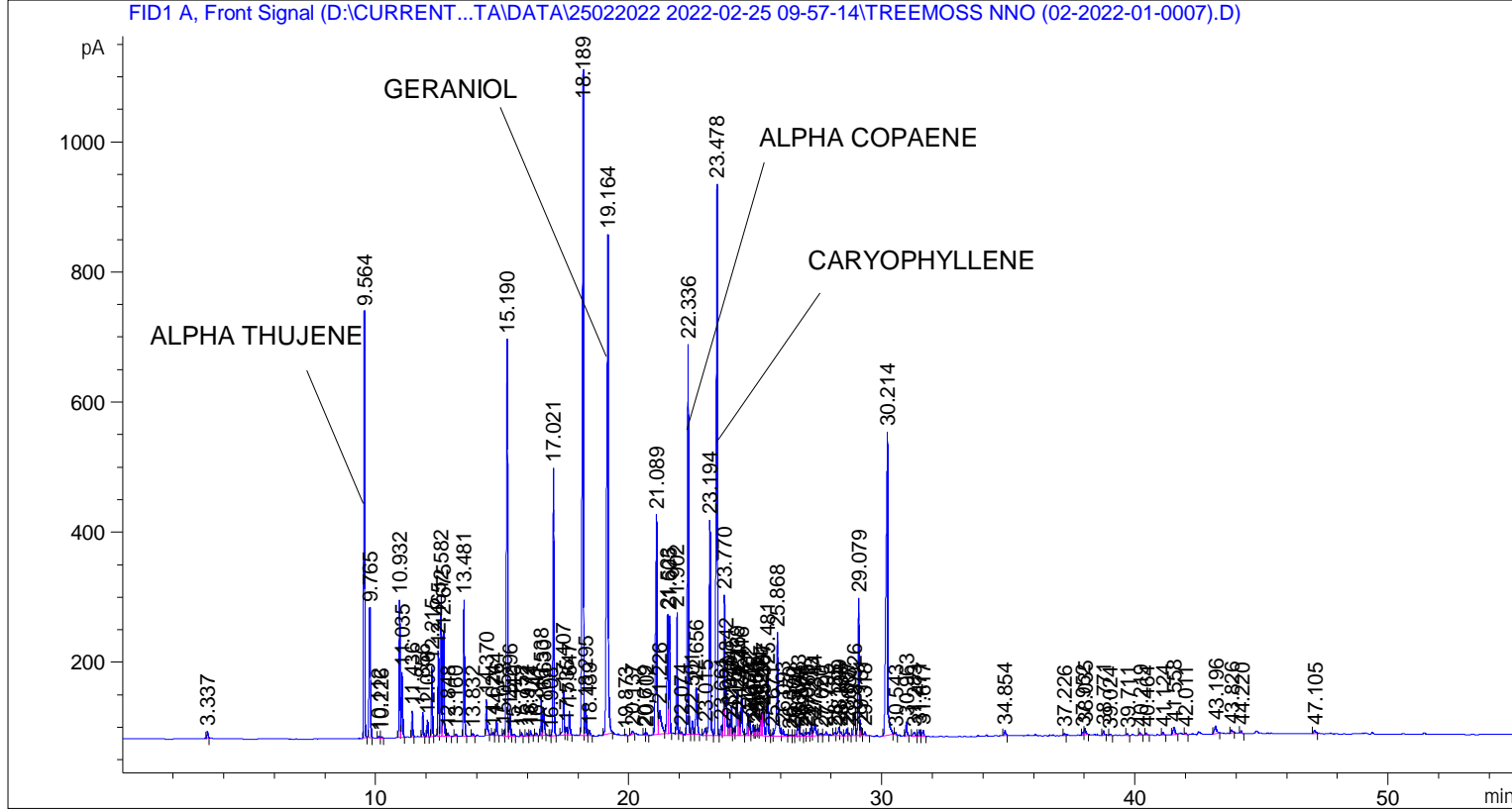


```

=====
Acq. Operator   : SYSTEM                               Seq. Line :    3
Acq. Instrument : BMV_NEW_GC_7820                     Location  : Vial 103
Injection Date  : 25-Feb-22 12:20:05 PM                Inj       :    1
                                                    Inj Volume: 0.5 µl

Acq. Method    : D:\CURRENT DATA\DATA\25022022 2022-02-25 09-57-14\UNIVERSAL BMV.M
Last changed   : 25-Feb-22 9:57:26 AM by SYSTEM
Analysis Method : C:\CHEM32\2\METHODS\COOLING.M
Last changed   : 04-Mar-22 11:36:33 AM by SYSTEM
                (modified after loading)
  
```



=====
 Area Percent Report
 =====

```

Sorted By      : Signal
Multiplier     : 1.0000
Dilution       : 1.0000
Do not use Multiplier & Dilution Factor with ISTDs
  
```

Signal 1: FID1 A, Front Signal

Peak #	RetTime [min]	Type	Width [min]	Area [pA*s]	Height [pA]	Area %
1	3.337	BB	0.0455	33.14954	11.19766	0.09426
2	9.564	BB	0.0427	1781.23132	656.35358	5.06486
3	9.765	BB	0.0432	551.45782	199.61797	1.56805
4	10.112	BB	0.0481	9.04832	2.76735	0.02573
5	10.226	BB	0.0450	8.43995	2.89242	0.02400
6	10.932	BV	0.0426	571.41687	211.20863	1.62480
7	11.035	VB	0.0449	292.13226	100.42948	0.83067
8	11.436	BB	0.0417	110.29343	40.55965	0.31361

Peak #	RetTime [min]	Type	Width [min]	Area [pA*s]	Height [pA]	Area %
9	11.856	BB	0.0430	104.24554	38.03189	0.29642
10	12.036	BB	0.0435	72.08973	25.84929	0.20498
11	12.215	BB	0.0428	294.48825	108.04033	0.83736
12	12.465	BV	0.0425	354.16351	131.19724	1.00705
13	12.582	VV	0.0449	618.42987	213.08679	1.75848
14	12.675	VB	0.0450	464.96307	159.55385	1.32210
15	12.848	BB	0.0502	16.06776	4.78013	0.04569
16	13.160	BB	0.0433	11.54288	3.92863	0.03282
17	13.481	BB	0.0442	577.57770	209.44783	1.64232
18	13.832	BB	0.0481	13.83982	4.47407	0.03935
19	14.370	BB	0.0493	181.58333	55.31227	0.51632
20	14.624	BV	0.0465	14.60067	4.94234	0.04152
21	14.764	VB	0.0543	82.95807	24.00672	0.23589
22	15.053	BV	0.0449	23.41856	8.05476	0.06659
23	15.190	VV	0.0502	1998.02319	609.73749	5.68129
24	15.296	VB	0.0470	116.93433	37.89183	0.33250
25	15.440	BB	0.0614	16.60374	3.76860	0.04721
26	15.752	BB	0.0470	17.24495	5.58975	0.04904
27	15.972	BV	0.0466	14.90761	4.88645	0.04239
28	16.111	VB	0.0468	22.22685	7.66150	0.06320
29	16.341	BB	0.0409	11.83338	4.61484	0.03365
30	16.538	BV	0.0442	165.76764	60.08733	0.47135
31	16.630	VB	0.0515	143.20660	42.29946	0.40720
32	16.908	BV	0.0377	4.45954	1.94541	0.01268
33	17.021	VB	0.0462	1210.06165	412.21536	3.44076
34	17.407	BV	0.0519	241.17435	68.71288	0.68577
35	17.535	VV	0.0490	37.98956	11.66120	0.10802
36	17.647	VB	0.0507	123.34985	37.23103	0.35074
37	18.189	BV	0.0524	3628.08228	1022.16333	10.31630
38	18.295	VB	0.0446	138.34401	49.56632	0.39338
39	18.439	BB	0.0514	27.08322	7.82483	0.07701
40	19.164	BB	0.0611	3300.46338	768.64441	9.38473
41	19.873	BB	0.0346	3.73405	1.92890	0.01062
42	20.137	BB	0.0682	25.07310	5.39347	0.07129
43	20.619	BV	0.0491	11.49053	3.71729	0.03267
44	20.702	VB	0.0548	14.76574	4.22520	0.04199
45	21.089	BV	0.0596	1378.48840	337.66748	3.91967
46	21.226	VB	0.0866	239.29842	36.90780	0.68043
47	21.523	BV	0.0458	542.75140	182.21208	1.54329
48	21.605	VB	0.0452	529.53162	180.83577	1.50570
49	21.902	BB	0.0438	523.45477	186.13298	1.48842
50	22.074	BB	0.0421	10.07538	3.66653	0.02865
51	22.336	BV	0.0514	1972.29260	599.79779	5.60813
52	22.501	VV	0.0487	66.20417	21.03362	0.18825
53	22.656	VB	0.0621	304.69138	72.38909	0.86638
54	23.015	BV	0.0695	52.65711	11.06852	0.14973
55	23.194	VV	0.0530	1162.67065	330.94681	3.30601
56	23.478	VB	0.0506	2947.88403	847.83905	8.38218
57	23.661	BV	0.0683	62.55840	15.12309	0.17788
58	23.770	VV	0.0477	680.56470	216.39969	1.93516
59	23.842	VV	0.0529	275.88040	76.78203	0.78445
60	23.970	VV	0.0465	59.45738	18.98697	0.16906
61	24.045	VV	0.0512	150.23871	45.90447	0.42720
62	24.157	VV	0.0612	45.81145	11.56520	0.13026

Peak #	RetTime [min]	Type	Width [min]	Area [pA*s]	Height [pA]	Area %
63	24.269	VV	0.0608	277.03607	64.91856	0.78774
64	24.364	VV	0.0452	94.08418	31.18962	0.26752
65	24.446	VV	0.0532	214.32683	62.18220	0.60943
66	24.702	VV	0.0497	114.55341	34.51426	0.32573
67	24.772	VV	0.0492	75.02378	23.50736	0.21333
68	24.915	VV	0.0538	66.53069	17.71301	0.18918
69	24.985	VV	0.0455	31.44157	10.04999	0.08940
70	25.053	VV	0.0476	31.35691	9.72956	0.08916
71	25.113	VV	0.0516	43.16690	12.11041	0.12274
72	25.204	VV	0.0404	74.11110	26.68362	0.21073
73	25.261	VV	0.0455	115.77953	37.00068	0.32921
74	25.307	VV	0.0672	164.19916	38.97536	0.46689
75	25.481	VB	0.0472	311.57260	100.44002	0.88594
76	25.671	BV	0.0457	13.40391	4.64357	0.03811
77	25.868	VV	0.0584	631.26996	158.86978	1.79499
78	26.093	VB	0.0697	53.22635	10.40785	0.15135
79	26.370	BB	0.0488	7.70076	2.44121	0.02190
80	26.500	BV	0.0444	4.64461	1.72476	0.01321
81	26.648	VV	0.0480	29.29630	9.48894	0.08330
82	26.713	VV	0.0507	73.86661	21.18328	0.21004
83	26.808	VB	0.0635	19.16512	4.60937	0.05450
84	26.975	BV	0.0492	20.01332	6.10613	0.05691
85	27.065	VV	0.0696	30.80281	6.02878	0.08759
86	27.213	VV	0.0533	54.47800	15.76473	0.15491
87	27.344	VB	0.0757	101.46539	19.81984	0.28851
88	27.620	BV	0.0887	22.29301	3.39043	0.06339
89	27.795	VB	0.0563	19.40644	5.11150	0.05518
90	28.135	BV	0.0539	16.80742	4.91341	0.04779
91	28.299	VV	0.0635	58.19096	13.17579	0.16546
92	28.366	VB	0.0584	23.92304	5.88467	0.06802
93	28.607	BV	0.0593	47.59100	11.25086	0.13532
94	28.687	VB	0.0433	10.69721	3.85808	0.03042
95	28.926	BV	0.0744	158.40581	35.24660	0.45042
96	29.079	VV	0.0484	678.47083	211.42386	1.92920
97	29.161	VB	0.0452	36.78910	12.56061	0.10461
98	29.318	BB	0.0579	24.11033	6.13059	0.06856
99	30.214	BB	0.0666	2380.66870	466.34103	6.76933
100	30.543	BB	0.0440	10.07746	3.55888	0.02865
101	30.963	BB	0.0499	74.75867	21.88266	0.21257
102	31.283	BV	0.0719	30.25518	5.70294	0.08603
103	31.471	VV	0.0528	35.65753	10.44132	0.10139
104	31.617	VB	0.0512	31.46839	9.60352	0.08948
105	34.854	BB	0.0591	28.61944	7.57017	0.08138
106	37.226	BV	0.0608	15.06747	3.83584	0.04284
107	37.952	BV	0.0522	16.55805	4.92223	0.04708
108	38.035	VB	0.0660	45.97163	9.92494	0.13072
109	38.771	BB	0.0512	22.61916	6.90512	0.06432
110	39.024	BB	0.0499	6.36125	2.01310	0.01809
111	39.711	BB	0.0545	8.79261	2.41598	0.02500
112	40.219	BB	0.0568	14.39357	3.74630	0.04093
113	40.464	BB	0.0538	10.60092	3.18811	0.03014
114	41.124	BB	0.0612	16.57581	4.01608	0.04713
115	41.558	BB	0.0717	58.07918	11.15812	0.16515
116	42.011	BB	0.0580	8.43112	2.23804	0.02397

Peak #	RetTime [min]	Type	Width [min]	Area [pA*s]	Height [pA]	Area %
117	43.196	BB	0.0789	72.59094	12.10942	0.20641
118	43.826	BB	0.0724	26.23425	5.42784	0.07460
119	44.220	BB	0.0532	14.13218	4.20208	0.04018
120	47.105	BB	0.0740	26.86392	5.22712	0.07639

Totals : 3.51684e4 1.02322e4

=====
*** End of Report ***